

District I
1625 N. French Dr., Hobbs, NM 88240
Phone: (575) 393-6161 Fax: (575) 393-0720
District II
811 S. First St., Artesia, NM 88210
Phone: (575) 748-1283 Fax: (575) 748-9720
District III
1000 Rio Brazos Road, Aztec, NM 87410
Phone: (505) 334-6178 Fax: (505) 334-6170
District IV
1220 S. St. Francis Dr., Santa Fe, NM 87505
Phone: (505) 476-3460 Fax: (505) 476-3462

State of New Mexico
Energy, Minerals & Natural Resources
Department
OIL CONSERVATION DIVISION
1220 South St. Francis Dr.
Santa Fe, NM 87505

HOBBS OCD

JAN 06 2020

RECEIVED

FORM C-102

Revised August 1, 2011

Submit one copy to appropriate

District Office

☐ AMENDED REPORT

WELL LOCATION AND ACREAGE DEDICATION PLAT

¹ API Number 30-025-46195	² Pool Code 33813	³ Pool Name JAL; WOLFCAMP, WEST
⁴ Property Code 322647	⁵ Property Name NANDINA 25 36 31 FED COM	⁶ Well Number 112H
⁷ GRID No. 372224	⁸ Operator Name AMEREDEV OPERATING, LLC.	⁹ Elevation 3023'

¹⁰Surface Location

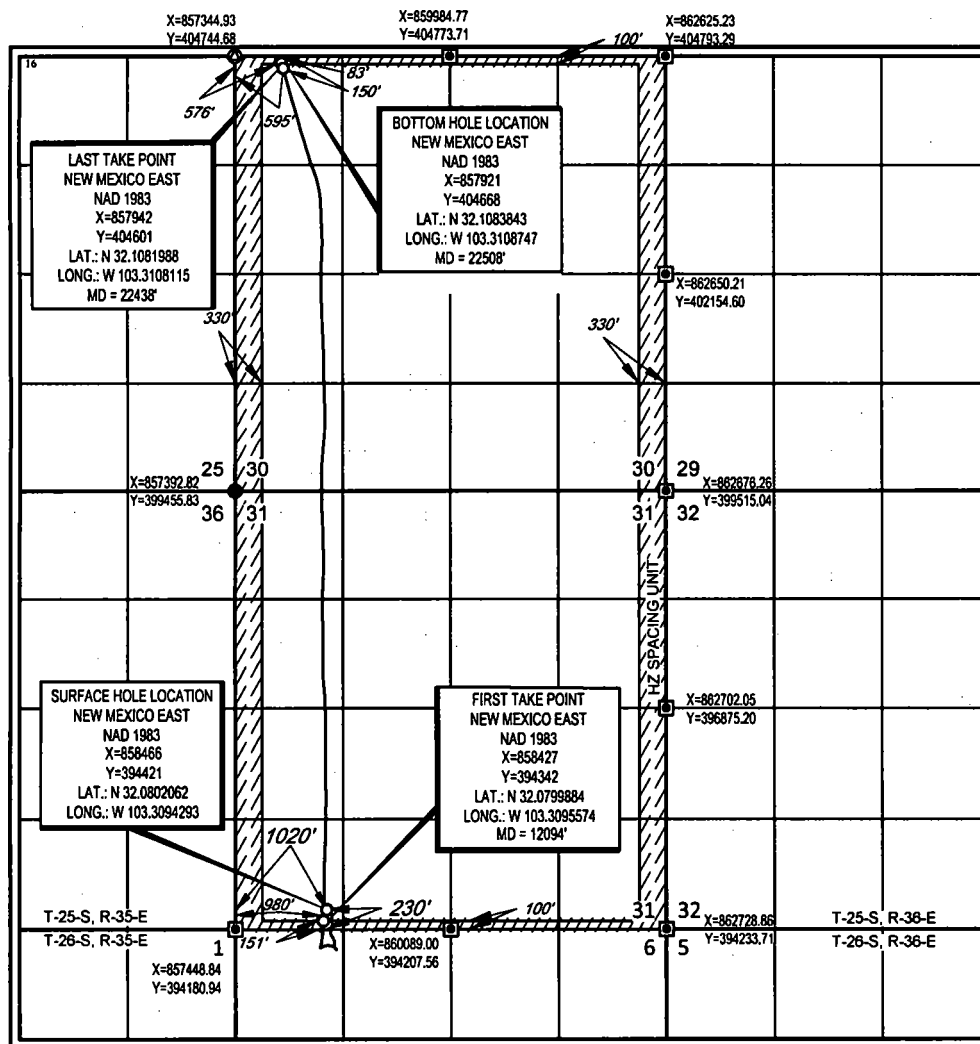
UL or lot no. M	Section 31	Township 25-S	Range 36-E	Lot Idn 4	Feet from the 230'	North/South line SOUTH	Feet from the 1020'	East/West line WEST	County LEA
---------------------------	----------------------	-------------------------	----------------------	---------------------	------------------------------	----------------------------------	-------------------------------	-------------------------------	----------------------

¹¹Bottom Hole Location If Different From Surface

UL or lot no. D	Section 30	Township 25-S	Range 36-E	Lot Idn 1	Feet from the 83'	North/South line NORTH	Feet from the 576'	East/West line WEST	County LEA
---------------------------	----------------------	-------------------------	----------------------	---------------------	-----------------------------	----------------------------------	------------------------------	-------------------------------	----------------------

¹² Dedicated Acres 640.4	¹³ Joint or Infill	¹⁴ Consolidation Code C	¹⁵ Order No.
---	-------------------------------	--	-------------------------

No allowable will be assigned to this completion until all interests have been consolidated or a non-standard unit has been approved by the division.



¹⁷OPERATOR CERTIFICATION

I hereby certify that the information contained herein is true and complete to the best of my knowledge and belief, and that this organization either owns a working interest or undivided mineral interest in the land including the proposed bottom hole location or has a right to drill this well at this location pursuant to a contract with an owner of such a mineral or working interest, or to a voluntary pooling agreement or a compulsory pooling order heretofore entered by the division.

Floyd Hammond 1/2/2020
Signature Date

Floyd Hammond

Printed Name

fhammond@ameredev.com

E-mail Address

¹⁸SURVEYOR CERTIFICATION

I hereby certify that the well location shown on this plat was plotted from field notes of actual surveys made by me or under my supervision, and that the same is true to the best of my belief.

05/10/2018

Date of Survey
Signature and Seal of Professional Surveyor

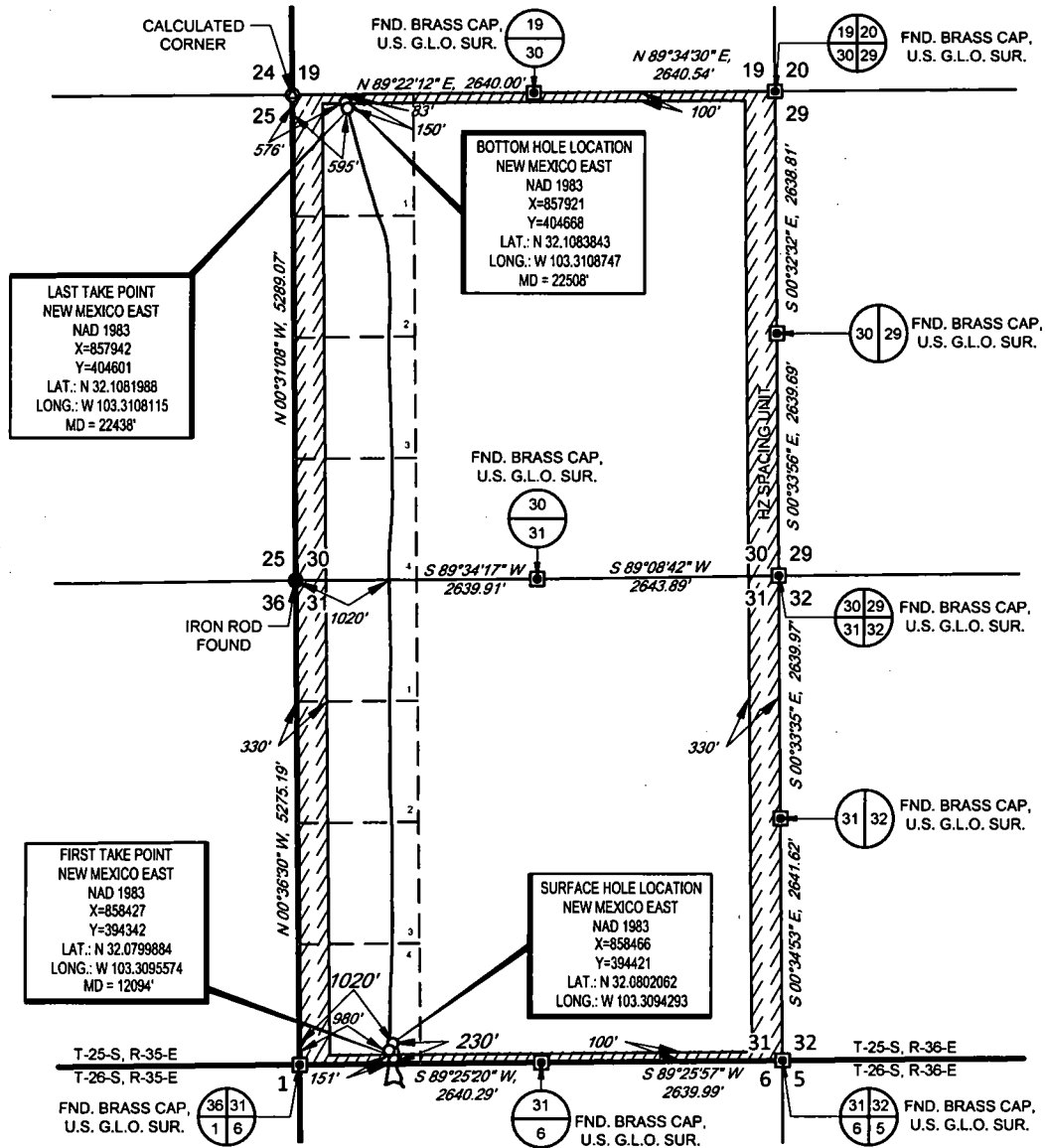


Certificate Number

SCALE: 1" = 2000'

0' 1000' 2000'

SECTION 31, TOWNSHIP 25-S, RANGE 36-E, N.M.P.M.
LEA COUNTY, NEW MEXICO



LEASE NAME & WELL NO.: NANDINA FED COM 25 36 31 112H
SECTION 31 TWP 25-S RGE 36-E SURVEY N.M.P.M.
COUNTY LEA STATE NM ELEVATION 3023'
DESCRIPTION 230' FSL & 1020' FWL



John Trevor Carnegie, P.S. No. 11401

AMEREDEV
AMEREDEV OPERATING, LLC



TOPOGRAPHIC
LOYALTY INNOVATION LEGACY

1400 EVERMAN PARKWAY, Ste. 146 • FT. WORTH, TEXAS 76140
TELEPHONE: (817) 744-7512 • FAX (817) 744-7554
TEXAS FIRM REGISTRATION NO. 10042504
WWW.TOPOGRAPHIC.COM

<p>NANDINA FED COM 25 36 31 112H AS-COMPLETED</p>	<p>REVISION:</p>	<p>NOTES:</p> <ol style="list-style-type: none"> 1. ORIGINAL DOCUMENT SIZE: 8.5" X 11" 2. ALL BEARINGS, DISTANCES, AND COORDINATE VALUES CONTAINED HEREIN ARE GRID BASED UPON THE NEW MEXICO COORDINATE SYSTEM OF 1983, EAST ZONE, U.S. SURVEY FEET. 3. THIS WELL LOCATION SHOWN HEREON HAS BEEN SURVEYED ON THE GROUND UNDER MY SUPERVISION AND PREPARED ACCORDING TO THE EVIDENCE FOUND AT THE TIME OF SURVEY, AND DATA PROVIDED BY AMEREDEV OPERATING, LLC. THIS CERTIFICATION IS MADE AND LIMITED TO THOSE PERSONS OR ENTITIES SHOWN ON THE FACE OF THIS PLAT AND IS NON-TRANSFERABLE. THIS SURVEY IS CERTIFIED FOR THIS TRANSACTION ONLY.
<p>DATE: 12/16/2019</p>		
<p>FILE: AD_NANDINA_FED_COM_25_36_31_112H</p>		
<p>DRAWN BY: JDR</p>		
<p>SHEET: 1 OF 1</p>		

Intent ☐ As Drilled ☒

API # 30-025-46195			
Operator Name: Ameredev Operating LLC		Property Name: Nandina Fed Com 25 36 31	Well Number 112H

Kick Off Point (KOP)

UL 1	Section 6	Township 26S	Range 36E	Lot	Feet 223	From N/S N	Feet 941	From E/W W	County Lea
Latitude 32.07896389					Longitude -103.3096978			NAD 83	

First Take Point (FTP)

UL 4	Section 31	Township 25S	Range 36E	Lot	Feet 100	From N/S S	Feet 980	From E/W W	County Lea
Latitude 32.07985					Longitude -103.3095642			NAD 83	

Last Take Point (LTP)

UL 1	Section 30	Township 25S	Range 36E	Lot	Feet 100	From N/S N	Feet 581	From E/W W	County Lea
Latitude 32.10833417					Longitude -103.3108575			NAD 83	

Is this well the defining well for the Horizontal Spacing Unit? ☐ No

Is this well an infill well? ☐ Yes

If infill is yes please provide API if available, Operator Name and well number for Defining well for Horizontal Spacing Unit.

API # 30-025-46195			
Operator Name: Ameredev Operating, LLC		Property Name: Nandina 25 36 31 Federal Com	Well Number 112H

KZ 06/29/2018