

District I
1625 N. French Dr., Hobbs, NM 88240
Phone: (575) 393-6161 Fax: (575) 393-0720
District II
811 S. First St., Artesia, NM 88210
Phone: (575) 748-1283 Fax: (575) 748-9720
District III
1000 Rio Brazos Road, Aztec, NM 87410
Phone: (505) 334-6178 Fax: (505) 334-6170
District IV
1220 S. St. Francis Dr., Santa Fe, NM 87505
Phone: (505) 476-3460 Fax: (505) 476-3462

State of New Mexico
Energy, Minerals & Natural Resources Department
OIL CONSERVATION DIVISION
1220 South St. Francis Dr.
Santa Fe, NM 87505

Form C-102
Revised August 1, 2011
Submit one copy to appropriate
District Office
☒ AMENDED REPORT

HOBBS OCD
JAN 06 2020
RECEIVED

WELL LOCATION AND ACREAGE DEDICATION PLAT

1 API Number 30-025-45699		2 Pool Code 97899		3 Pool Name WC-025 G-06 S253206M; BONE SPRING	
4 Property Code 325131		5 Property Name CHINCOTEAGUE 8-5 FED COM			6 Well Number 231H
7 OGRID No. 6137		8 Operator Name DEVON ENERGY PRODUCTION COMPANY, L.P.			9 Elevation 3437.9

10 Surface Location

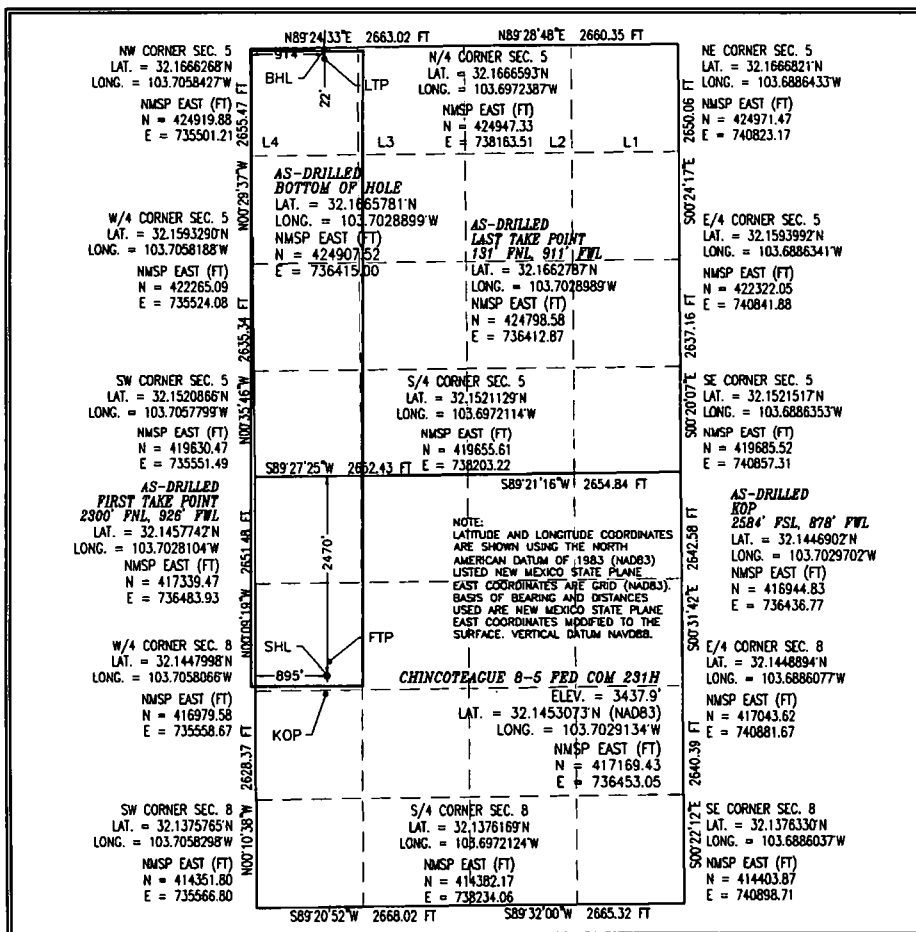
UL or lot no.	Section	Township	Range	Lot Idn	Feet from the	North/South line	Feet from the	East/West line	County
E	8	25 S	32 E		2470	NORTH	895	WEST	LEA

11 Bottom Hole Location If Different From Surface

UL or lot no.	Section	Township	Range	Lot Idn	Feet from the	North/South line	Feet from the	East/West line	County
4	5	25 S	32 E		22	NORTH	914	WEST	LEA

12 Dedicated Acres 240	13 Joint or Infill	14 Consolidation Code	15 Order No.
---------------------------	--------------------	-----------------------	--------------

No allowable will be assigned to this completion until all interests have been consolidated or a non-standard unit has been approved by the division.



17 OPERATOR CERTIFICATION
I hereby certify that the information contained herein is true and complete to the best of my knowledge and belief, and that this organization either owns a working interest or unleased mineral interest in the land including the proposed bottom hole location or has a right to drill this well at this location pursuant to a contract with an owner of such a mineral or working interest, or to a voluntary pooling agreement or a compulsory pooling order heretofore entered by the division.

Signature: Jenny Harms Date: 12-30-2019
Printed Name: JENNY HARMS
E-mail Address: JENNY.HARMS@DVN.COM

18 SURVEYOR CERTIFICATION
I hereby certify that the well location shown on this plat was plotted from field notes of actual surveys made by me or under my supervision, and that the same is true and correct to the best of my belief.

OCTOBER 16, 2018
Date of Survey

Signature and Seal of Professional Surveyor: [Signature]
Certificate Number: 12797

Intent ☐ As Drilled ☒

API #		
Operator Name: DEVON ENERGY PRODUCTION CO., L.P.	Property Name: CHINCOTEAGUE 8-5 FED COM	Well Number 231H

Kick Off Point (KOP)

UL L	Section 8	Township 25S	Range 32E	Lot	Feet 2584	From N/S SOUTH	Feet 878	From E/W WEST	County LEA
Latitude 32.1446902					Longitude 103.7029702				NAD 83

First Take Point (FTP)

UL E	Section 8	Township 25S	Range 32E	Lot	Feet 2300	From N/S NORTH	Feet 926	From E/W WEST	County LEA
Latitude 32.1457742					Longitude 103.7028104				NAD 83

Last Take Point (LTP)

UL	Section 5	Township 25S	Range 32E	Lot 4	Feet 131	From N/S NORTH	Feet 911	From E/W WEST	County LEA
Latitude 32.1662787					Longitude 103.7028989				NAD 83

Is this well the defining well for the Horizontal Spacing Unit? ☒

Is this well an infill well? ☐

If infill is yes please provide API if available, Operator Name and well number for Defining well for Horizontal Spacing Unit.

API #		
Operator Name:	Property Name:	Well Number

KZ 06/29/2018