

District I
1625 N. French Dr., Hobbs, NM 88240
Phone: (575) 393-6161 Fax: (575) 393-0720
District II
811 S. First St., Artesia, NM 88210
Phone: (575) 748-1283 Fax: (575) 748-9720
District III
1000 Rio Brazos Road, Aztec, NM 87410
Phone: (505) 334-6178 Fax: (505) 334-6170
District IV
1220 S. St. Francis Dr., Santa Fe, NM 87505
Phone: (505) 476-3460 Fax: (505) 476-3462

State of New Mexico
Energy, Minerals & Natural Resources
Department
OIL CONSERVATION DIVISION
1220 South St. Francis Dr.
Santa Fe, NM 87505

FORM C-102

Revised August 1, 2011

Submit one copy to appropriate

District Office

☐ AMENDED REPORT

WELL LOCATION AND ACREAGE DEDICATION PLAT

¹ API Number 30-025-45325		² Pool Code 51687		³ Pool Name RED TANK; BONE SPRING, EAST	
⁴ Property Code 317388		⁵ Property Name SPEEDY 16 STATE COM			⁶ Well Number #201H
⁷ GRID No. 7377		⁸ Operator Name EOG RESOURCES, INC.			⁹ Elevation 3575'

¹⁰Surface Location

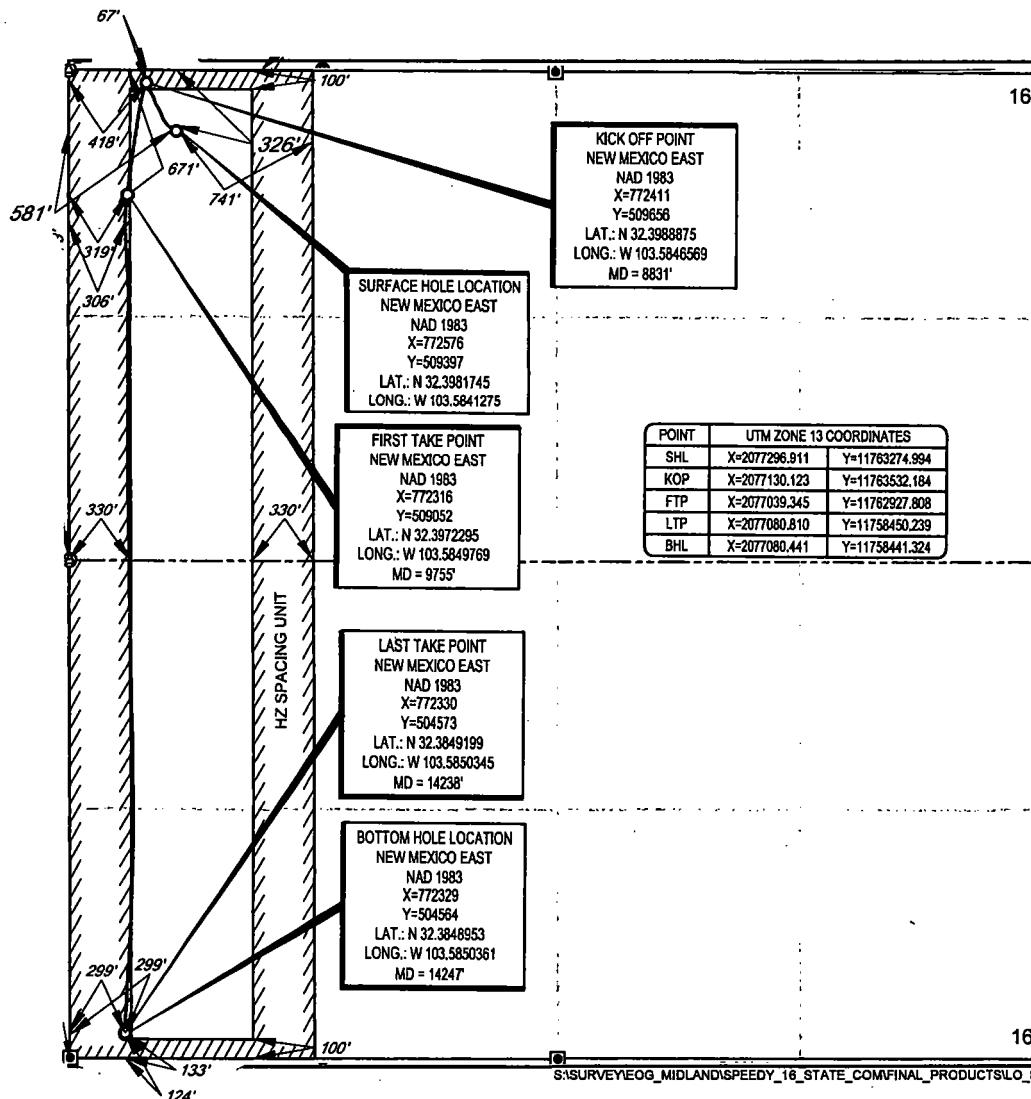
UL or lot no.	Section	Township	Range	Lot Idn	Feet from the	North/South line	Feet from the	East/West line	County
D	16	22-S	33-E	-	326'	NORTH	581'	WEST	LEA

¹¹Bottom Hole Location If Different From Surface

UL or lot no.	Section	Township	Range	Lot Idn	Feet from the	North/South line	Feet from the	East/West line	County
M	16	22-S	33-E	-	124'	SOUTH	299'	WEST	LEA

¹² Dedicated Acres 160.00	¹³ Joint or Infill	¹⁴ Consolidation Code	¹⁵ Order No.
---	-------------------------------	----------------------------------	-------------------------

No allowable will be assigned to this completion until all interests have been consolidated or a non-standard unit has been approved by the division.



¹⁷OPERATOR CERTIFICATION

I hereby certify that the information contained herein is true and complete to the best of my knowledge and belief, and that this organization either owns a working interest or released mineral interest in the land including the proposed bottom hole location or has a right to drill this well at this location pursuant to a contract with an owner of such a mineral or working interest, or to a voluntary pooling agreement or a compulsory pooling order heretofore entered by the division.

Kay Maddox 01/06/2020

Signature Date

Kay Maddox

Printed Name

Kay_Maddox@eogresources.com

E-mail Address

¹⁸SURVEYOR CERTIFICATION

I hereby certify that the well location shown on this plat was plotted from field notes of actual surveys made by me or under my supervision, and that the same is true to the best of my belief.

Date of Survey

Signature and Seal of Professional Surveyor

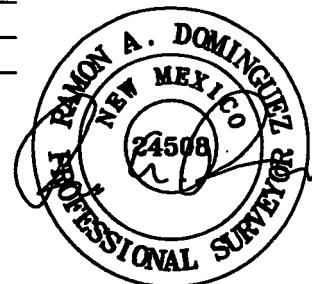
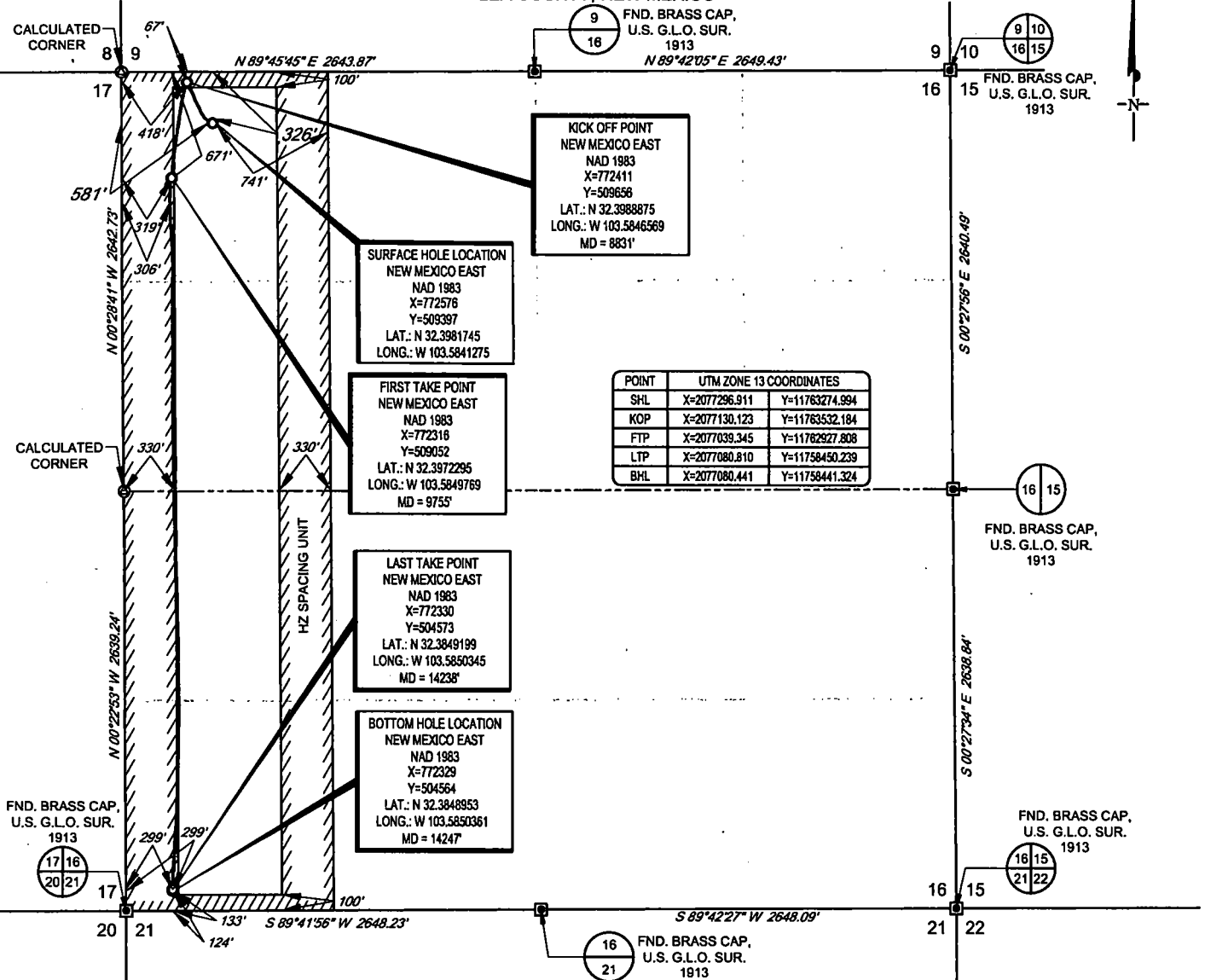
10/17/2018
NEW MEXICO
18329
PROFESSIONAL SURVEYOR

Certificate Number

SCALE: 1" = 1000'

0' 500' 1000'

SECTION 16, TOWNSHIP 22-S, RANGE 33-E, N.M.P.M.
LEA COUNTY, NEW MEXICO



Ramon Dominguez, P.S. No. 24508
DECEMBER 14, 2018



TOPOGRAPHIC
LOYALTY INNOVATION LEGACY

1400 EVERMAN PARKWAY, Ste. 146 • FT. WORTH, TEXAS 76140
TELEPHONE: (817) 744-7512 • FAX (817) 744-7554
2803 NORTH BIG SPRING • MIDLAND, TEXAS 79705
TELEPHONE: (432) 682-1653 OR (800) 767-1653 • FAX (432) 682-1743
WWW.TOPOGRAPHIC.COM

eg resources, inc.

SPEEDY 16 STATE COM
#201H
AS-COMPLETED

DATE: 12/02/19

FILE: AD_SPEEDY_16_STATE_COM_201H

DRAWN BY: TRG

SHEET: 1 OF 1

REVISION:

NOTES:

1. ORIGINAL DOCUMENT SIZE: 8.5" X 11"
2. ALL BEARINGS, DISTANCES, AND COORDINATE VALUES CONTAINED HEREIN ARE GRID BASED UPON THE NEW MEXICO COORDINATE SYSTEM OF 1983, EAST ZONE, U.S. SURVEY FEET.
3. THIS WELL LOCATION SHOWN HEREON HAS BEEN SURVEYED ON THE GROUND UNDER MY SUPERVISION AND PREPARED ACCORDING TO THE EVIDENCE FOUND AT THE TIME OF SURVEY, AND DATA PROVIDED BY EOG RESOURCES, INC. THIS CERTIFICATION IS MADE AND LIMITED TO THOSE PERSONS OR ENTITIES SHOWN ON THE FACE OF THIS PLAT AND IS NON-TRANSFERABLE. THIS SURVEY IS CERTIFIED FOR THIS TRANSACTION ONLY.

Intent ☐ As Drilled ☒ XXX

API #
30-025-45325

Operator Name: EOG RESOURCES, INC	Property Name: SPEEDY 16 STATE COM	Well Number 201H
--------------------------------------	---------------------------------------	---------------------

Kick Off Point (KOP)

UL D	Section 16	Township 22S	Range 33E	Lot	Feet 67	From N/S NORTH	Feet 418	From E/W WEST	County LEA
Latitude 32.3988875					Longitude 103.5846569				NAD 1983

First Take Point (FTP)

UL D	Section 16	Township 22S	Range 33E	Lot	Feet 671	From N/S NORTH	Feet 319	From E/W WEST	County LEA
Latitude 32.3972295					Longitude 103.5849769				NAD 1983

Last Take Point (LTP)

UL M	Section 16	Township 22S	Range 33E	Lot	Feet 133	From N/S SOUTH	Feet 299	From E/W WEST	County LEA
Latitude 32.3849199					Longitude 103.5850345				NAD 1983

Is this well the defining well for the Horizontal Spacing Unit?

☐ NO

Is this well an infill well?

☐ YES

If infill is yes please provide API if available, Operator Name and well number for Defining well for Horizontal Spacing Unit.

API #
30-025-43586

Operator Name: EOG RESOURCES, INC	Property Name: SPEEDY 16 STATE COM	Well Number 501H
--------------------------------------	---------------------------------------	---------------------

KZ 06/29/2018