

District I
1625 N. French Dr., Hobbs, NM 88240
Phone: (575) 393-6161 Fax: (575) 393-0720
District II
811 S. First St., Artesia, NM 88210
Phone: (575) 748-1283 Fax: (575) 748-9720
District III
1000 Rio Brazos Road, Aztec, NM 87410
Phone: (505) 334-6178 Fax: (505) 334-6170
District IV
1220 S. St. Francis Dr., Santa Fe, NM 87505
Phone: (505) 476-3460 Fax: (505) 476-3462

State of New Mexico
Energy, Minerals & Natural Resources
Department
OIL CONSERVATION DIVISION
1220 South St. Francis Dr.
Santa Fe, NM 87505

FORM C-102

Revised August 1, 2011

Submit one copy to appropriate

District Office

☐ AMENDED REPORT

WELL LOCATION AND ACREAGE DEDICATION PLAT

¹ API Number 30-025-46275	² Pool Code 59900	³ Pool Name TRIPLE X; BONE SPRING
⁴ Property Code 322743	⁵ Property Name YARROW 32 STATE	⁶ Well Number #204H
⁷ GRID No. 7377	⁸ Operator Name EOG RESOURCES, INC.	⁹ Elevation 3672'

¹⁰Surface Location

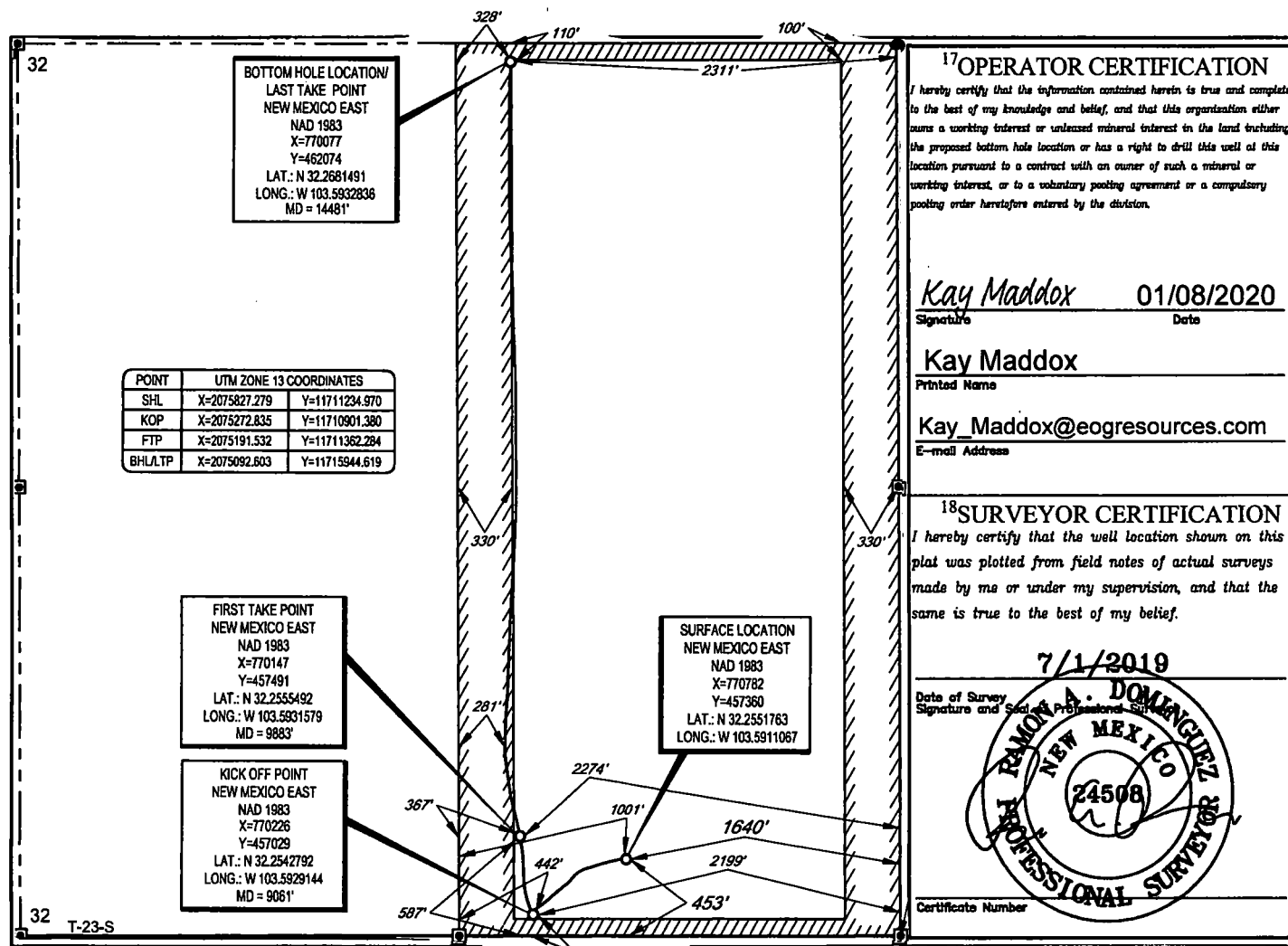
UL or lot no.	Section	Township	Range	Lot Idn	Feet from the	North/South line	Feet from the	East/West line	County
0	32	23-S	33-E	-	453'	SOUTH	1640'	EAST	LEA

¹¹Bottom Hole Location If Different From Surface

UL or lot no.	Section	Township	Range	Lot Idn	Feet from the	North/South line	Feet from the	East/West line	County
B	32	23-S	33-E	-	110'	NORTH	2311'	EAST	LEA

¹² Dedicated Acres 320	¹³ Joint or Infill	¹⁴ Consolidation Code	¹⁵ Order No.
--------------------------------------	-------------------------------	----------------------------------	-------------------------

No allowable will be assigned to this completion until all interests have been consolidated or a non-standard unit has been approved by the division.



Intent ☐ As Drilled ☒ XXX

API #
30-025-46275

Operator Name:
EOG RESOURCES, INC

Property Name:
YARROW 32 STATE

Well Number
204H

Kick Off Point (KOP)

UL O	Section 32	Township 23S	Range 33E	Lot	Feet 125	From N/S SOUTH	Feet 2199	From E/W EAST	County LEA
Latitude 32.2542792					Longitude 103.5929144				NAD 1983

First Take Point (FTP)

UL O	Section 32	Township 23S	Range 33E	Lot	Feet 587	From N/S SOUTH	Feet 2274	From E/W EAST	County LEA
Latitude 32.2555492					Longitude 103.5931579				NAD 1983

Last Take Point (LTP)

UL B	Section 32	Township 23S	Range 33E	Lot	Feet 110	From N/S NORTH	Feet 2311	From E/W EAST	County LEA
Latitude 32.2681491					Longitude 103.5932836				NAD 1983

Is this well the defining well for the Horizontal Spacing Unit?

☒ NO

Is this well an infill well?

☐ YES

If infill is yes please provide API if available, Operator Name and well number for Defining well for Horizontal Spacing Unit.

API #
30-025-46273

Operator Name:
EOG RESOURCES, INC

Property Name:
YARROW 32 STATE

Well Number
#202H

KZ 06/29/2018