

District I
1625 N. French Dr., Hobbs, NM 88240
Phone: (575) 393-6161 Fax: (575) 393-0720
District II
811 S. First St., Artesia, NM 88210
Phone: (575) 748-1283 Fax: (575) 748-9720
District III
1000 Rio Brazos Road, Aztec, NM 87410
Phone: (505) 334-6178 Fax: (505) 334-6170
District IV
1220 S. St. Francis Dr., Santa Fe, NM 87505
Phone: (505) 476-3460 Fax: (505) 476-3462

State of New Mexico
Energy, Minerals & Natural Resources
Department
OIL CONSERVATION DIVISION
1220 South St. Francis Dr.
Santa Fe, NM 87505

FORM C-102

Revised August 1, 2011

Submit one copy to appropriate

District Office

☐ AMENDED REPORT

WELL LOCATION AND ACREAGE DEDICATION PLAT

¹ API Number 30-025-46254	² Pool Code 52769	³ Pool Name ROCK LAKE; BONE SPRING, SOUTH
⁴ Property Code 325951	⁵ Property Name MARLAN DOWNEY STATE 04&09-23S-35E AR	⁶ Well Number 113H
⁷ OGRID No. 228937	⁸ Operator Name MATADOR PRODUCTION COMPANY	⁹ Elevation 3543'

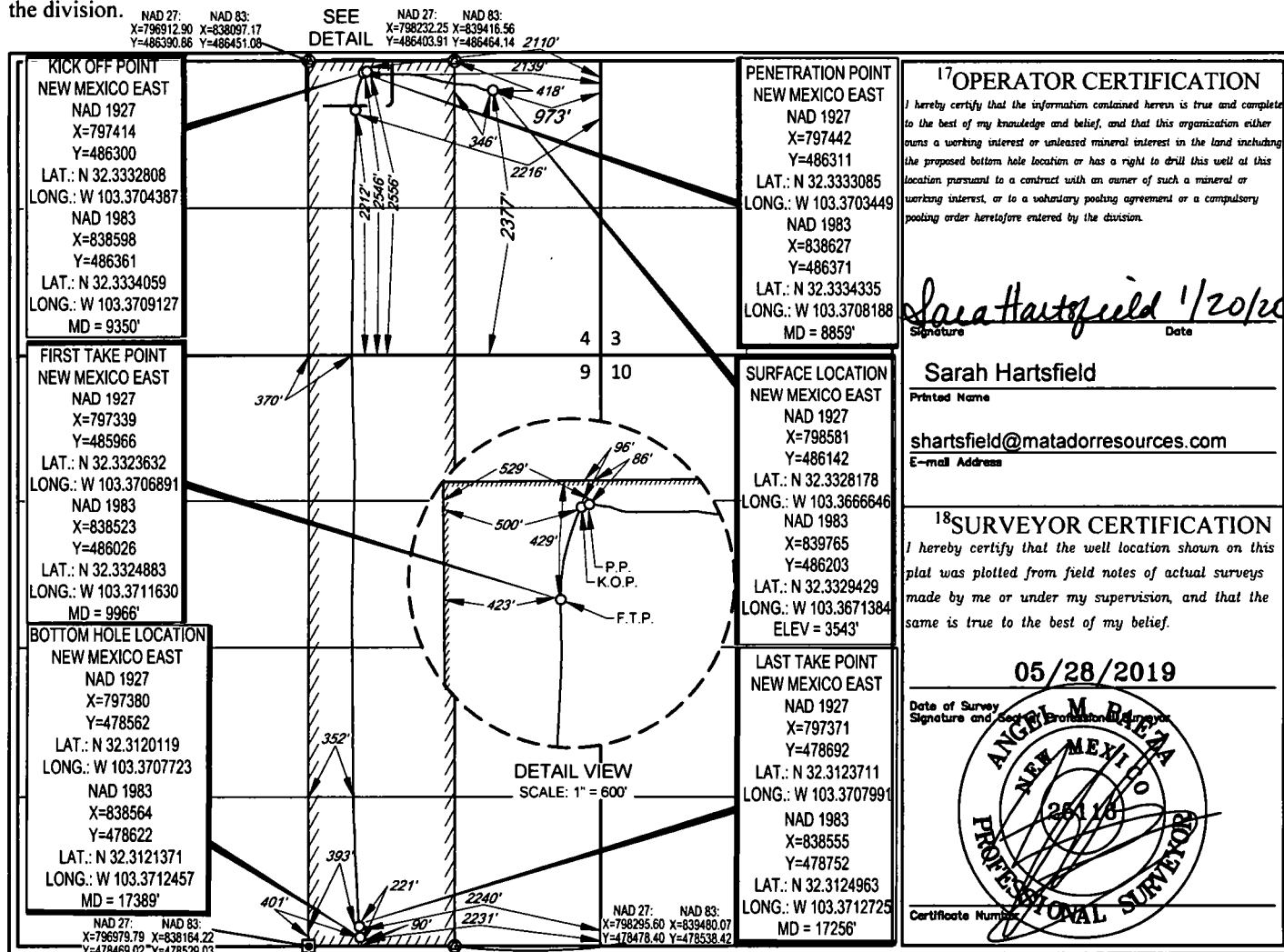
¹⁰Surface Location

UL or lot no.	Section	Township	Range	Lot Idn	Feet from the	North/South line	Feet from the	East/West line	County
I	4	23-S	35-E	-	2377'	SOUTH	973'	EAST	LEA

UL or lot no.	Section	Township	Range	Lot Idn	Feet from the	North/South line	Feet from the	East/West line	County
0	9	23-S	35-E	-	90'	SOUTH	2231'	EAST	LEA

¹¹ Dedicated Acres 240	¹² Joint or Infill	¹³ Consolidation Code	¹⁴ Order No.
--------------------------------------	-------------------------------	----------------------------------	-------------------------

No allowable will be assigned to this completion until all interests have been consolidated or a non-standard unit has been approved by the division.



SCALE: 1" = 1000'
0' 500' 1000'

SECTION 4 & 9, TOWNSHIP 23-S, RANGE 35-E, N.M.P.M.
LEA COUNTY, NEW MEXICO

FND. BRASS CAP.
U.S. G.L.O. SUR.
1913

FND. BRASS CAP.
U.S. G.L.O. SUR.
1913

FND. BRASS CAP.
U.S. G.L.O. SUR.
1913

FND. BRASS CAP.
U.S. G.L.O. SUR.
1913

PENETRATION POINT
NEW MEXICO EAST
NAD 1927
X=797442
Y=486311
LAT.: N 32.3333085
LONG.: W 103.3703449
NAD 1983
X=838627
Y=486371
LAT.: N 32.3334335
LONG.: W 103.3708188
MD = 8859'

SURFACE LOCATION
NEW MEXICO EAST
NAD 1927
X=798581
Y=486142
LAT.: N 32.3328178
LONG.: W 103.3666646
NAD 1983
X=839765
Y=486203
LAT.: N 32.3329429
LONG.: W 103.3671384
ELEV = 3543'

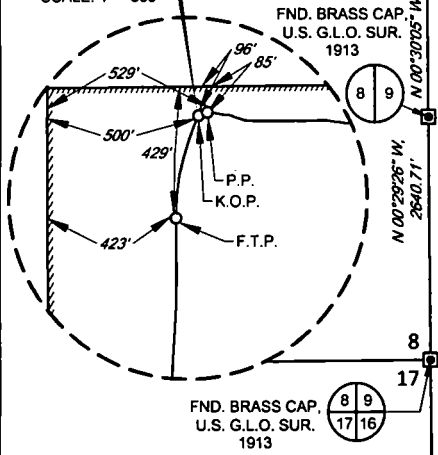
KICK OFF POINT
NEW MEXICO EAST
NAD 1927
X=797414
Y=486300
LAT.: N 32.3332808
LONG.: W 103.3704387
NAD 1983
X=838598
Y=486361
LAT.: N 32.3334059
LONG.: W 103.3709127
MD = 9350'

FIRST TAKE POINT
NEW MEXICO EAST
NAD 1927
X=797339
Y=485966
LAT.: N 32.3323632
LONG.: W 103.3706891
NAD 1983
X=838523
Y=486026
LAT.: N 32.3324883
LONG.: W 103.3711630
MD = 9966'

BOTTOM HOLE LOCATION
NEW MEXICO EAST
NAD 1927
X=797380
Y=478562
LAT.: N 32.3120119
LONG.: W 103.3707723
NAD 1983
X=838564
Y=478622
LAT.: N 32.3121371
LONG.: W 103.3712457
MD = 17389'

LAST TAKE POINT
NEW MEXICO EAST
NAD 1927
X=797371
Y=478692
LAT.: N 32.3123711
LONG.: W 103.3707991
NAD 1983
X=838555
Y=478752
LAT.: N 32.3124963
LONG.: W 103.3712725
MD = 17256'

DETAIL VIEW
SCALE: 1" = 600'



LEASE NAME & WELL NO.: MARLAN DOWNEY STATE 04&09-23S-35E AR 113H

SECTION 4 TWP 23-S RGE 35-E SURVEY N.M.P.M.

COUNTY LEA STATE NM ELEVATION 3543'

DESCRIPTION 2376' FSL & 973' FEL



TOPOGRAPHIC
LOYALTY INNOVATION LEGACY

1400 EVERMAN PARKWAY, Ste. 146 • FT. WORTH, TEXAS 76140
TELEPHONE: (817) 744-7512 • FAX (817) 744-7554
2903 NORTH BIG SPRING • MIDLAND, TEXAS 79705
TELEPHONE: (432) 682-1653 OR (800) 767-1653 • FAX (432) 682-1743
WWW.TOPOGRAPHIC.COM



Angel M. Baeza, P.S. No. 25116
JANUARY 16, 2020

MARLAN DOWNEY STATE
04&09-23S-35E AR 113H
AS-COMPLETED

REVISION:

DATE: 1/16/2020

FILE: AD_MARLAN_DOWNEY_STATE_04&09-23S-35E_AR_113H

DRAWN BY: JDR

SHEET: 1 OF 1

NOTES:

1. ORIGINAL DOCUMENT SIZE: 8.5" X 11"
2. ALL BEARINGS, DISTANCES, AND COORDINATE VALUES CONTAINED HEREIN ARE GRID BASED UPON THE NEW MEXICO COORDINATE SYSTEM OF 1983, EAST ZONE, U.S. SURVEY FEET.
3. THIS EASEMENT/SERVITUDE LOCATION SHOWN HEREON HAS BEEN SURVEYED ON THE GROUND UNDER MY SUPERVISION AND PREPARED ACCORDING TO THE EVIDENCE FOUND AT THE TIME OF SURVEY, AND DATA PROVIDED BY MATADOR PRODUCTION COMPANY. THIS CERTIFICATION IS MADE AND LIMITED TO THOSE PERSONS OR ENTITIES SHOWN ON THE FACE OF THIS PLAT AND IS NON-TRANSFERABLE. THIS SURVEY IS CERTIFIED FOR THIS TRANSACTION ONLY.

HOBBS OCDIntent ☐ As Drilled ☒

JAN 22 2020

API #
30-025-46254**RECEIVED**Operator Name:
MATADOR PRODUCTION COMPANYProperty Name:
MARLAN DOWNEY 4 9 23S 35E
STATE COMWell Number
113H

Kick Off Point (KOP)

UL	Section	Township	Range	Lot	Feet	From N/S	Feet	From E/W	County
J	4	23S	35E		2546	S	2139	E	LEA
Latitude N 32.3334059					Longitude W 103.3709127				NAD 83

First Take Point (FTP)

UL	Section	Township	Range	Lot	Feet	From N/S	Feet	From E/W	County
J	4	23S	35E		2212	S	2216	E	LEA
Latitude N 32.3324883					Longitude W 103.3711630				NAD 83

Last Take Point (LTP)

UL	Section	Township	Range	Lot	Feet	From N/S	Feet	From E/W	County
O	9	23S	35E		221	S	2240	E	LEA
Latitude N 32.3124963					Longitude W 103.3712725				NAD 83

Is this well the defining well for the Horizontal Spacing Unit?

☒

Is this well an infill well?

☐

If infill is yes please provide API if available, Operator Name and well number for Defining well for Horizontal Spacing Unit.

API #

Operator Name:

Property Name:

Well Number

KZ 06/29/2018