

B/F/E

District I
1625 N. French Dr., Hobbs, NM 88240
Phone: (575) 393-6161 Fax: (575) 393-0720
District II
811 S. First St., Artesia, NM 88210
Phone: (575) 748-1283 Fax: (575) 748-9720
District III
1000 Rio Brazos Road, Aztec, NM 87410
Phone: (505) 334-6178 Fax: (505) 334-6170
District IV
1220 S. St. Francis Dr., Santa Fe, NM 87505
Phone: (505) 476-3460 Fax: (505) 476-3462

State of New Mexico
Energy, Minerals & Natural Resources Department
OIL CONSERVATION DIVISION
1220 South St. Francis Dr.
Santa Fe, NM 87505

Form C-102
Revised August 1, 2011
Submit one copy to appropriate
District Office

HOBBS OCB
JAN 21 2020
RECEIVED

AMENDED REPORT

WELL LOCATION AND ACREAGE DEDICATION PLAT

¹ API Number 30025-46785	² Pool Code 44500	³ Pool Name Maljamar, Yeso West
⁴ Property Code 720830	⁵ Property Name PERIDOT 8 FEDERAL	⁶ Well Number 6H
⁷ OGRID No. 217817	⁸ Operator Name ConocoPhillips Company	⁹ Elevation 4052.2'

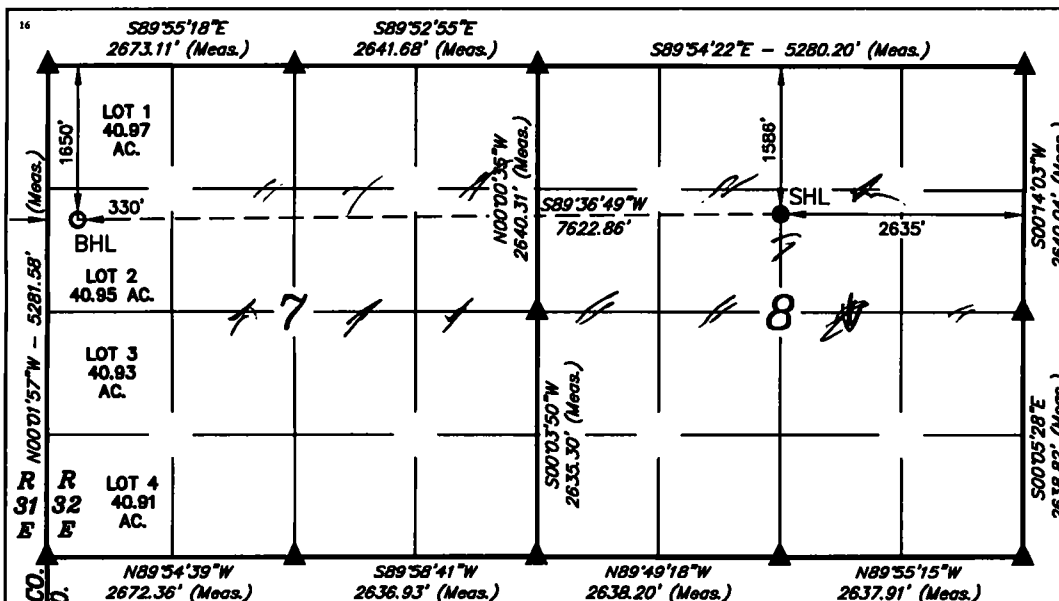
¹⁰ Surface Location

UL or lot no.	Section	Township	Range	Lot Idn	Feet from the	North/South line	Feet from the	East/West line	County
G	8	17S	32E		1586	NORTH	2635	EAST	LEA

¹¹ Bottom Hole Location If Different From Surface

UL or lot no.	Section	Township	Range	Lot Idn	Feet from the	North/South line	Feet from the	East/West line	County
LOT 2	7	17S	32E		1650	NORTH	330	WEST	LEA
¹² Dedicated Acres 280.95		¹³ Joint or Infill		¹⁴ Consolidation Code		¹⁵ Order No.			

No allowable will be assigned to this completion until all interests have been consolidated or a non-standard unit has been approved by the division.



NAD 83 (SURFACE LOCATION)
LATITUDE = 32°51'07.45" (32.852069)
LONGITUDE = 103°47'19.05" (103.788625)
NAD 27 (SURFACE LOCATION)
LATITUDE = 32°51'07.02" (32.851950)
LONGITUDE = 103°47'17.23" (103.788119)
STATE PLANE NAD 83 (N.M. EAST)
N: 674147.47 E: 708611.43
STATE PLANE NAD 27 (N.M. EAST)
N: 674083.08 E: 667433.13

NAD 83 (BOTTOM HOLE LOCATION)
LATITUDE = 32°51'06.93" (32.851925)
LONGITUDE = 103°48'48.39" (103.813442)
NAD 27 (BOTTOM HOLE LOCATION)
LATITUDE = 32°51'06.50" (32.851806)
LONGITUDE = 103°48'46.56" (103.812933)
STATE PLANE NAD 83 (N.M. EAST)
N: 674056.59 E: 700990.98
STATE PLANE NAD 27 (N.M. EAST)
N: 673992.29 E: 659812.60

¹⁷ OPERATOR CERTIFICATION

I hereby certify that the information contained herein is true and complete to the best of my knowledge and belief, and that this organization either owns a working interest or unleased mineral interest in the land including the proposed bottom hole location or has a right to drill this well at this location pursuant to a contract with an owner of such a mineral or working interest, or to a voluntary pooling agreement or a compulsory pooling order heretofore entered by the division.

Susan B. Maunder 1/23/18
Signature Date

Susan B. Maunder
Printed Name

Susan.B.Maunder@conocophillips.com

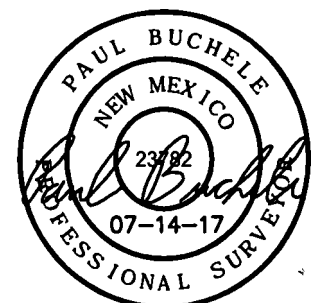
E-mail Address

¹⁸ SURVEYOR CERTIFICATION

I hereby certify that the well location shown on this plat was plotted from field notes of actual surveys made by me or under my supervision, and that the same is true and correct to the best of my belief.

June 24, 2017

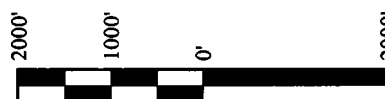
Date of Survey
Signature and Seal of Professional Surveyor:



Certificate Number:

- = SURFACE HOLE LOCATION
- = BOTTOM HOLE LOCATION
- ▲ = SECTION CORNER LOCATED

NOTE:
• Distances referenced on plat to section lines are perpendicular.
• Basis of Bearing is a Transverse Mercator Projection with a Central Meridian of W103.786335



SCALE

DRAWN BY: S.S. 07-13-17