

District I
1625 N. French Dr., Hobbs, NM 88240
Phone: (575) 393-6161 Fax: (575) 393-0720
District II
811 S. First St., Artesia, NM 88210
Phone: (575) 748-1283 Fax: (575) 748-9720
District III
1000 Rio Benito Road, Amiteo, NM 87410
Phone: (505) 334-6178 Fax: (505) 334-6170
District IV
1280 S. St. Francis Dr., Santa Fe, NM 87505
Phone: (505) 476-3460 Fax: (505) 476-3462

State of New Mexico
Energy, Minerals & Natural Resources Department
OIL CONSERVATION DIVISION
1220 South St. Francis Dr.
Santa Fe, NM 87505

HOBBS OCD
JAN 29 2020
RECEIVED

Form C-102
Revised August 1, 2011
Submit one copy to appropriate
District Office

☒ **AMENDED REPORT**
As-Drilled

WELL LOCATION AND ACREAGE DEDICATION PLAT

API Number 30-025-45839	Pool Code 98316	Pool Name MONITOR, STRAWN
Property Code 325625	Property Name AVOGATO "31" STATE	Well Number 100
OGRID No. 16696	Operator Name OXY USA INC.	Elevation 3735.9'

Surface Location

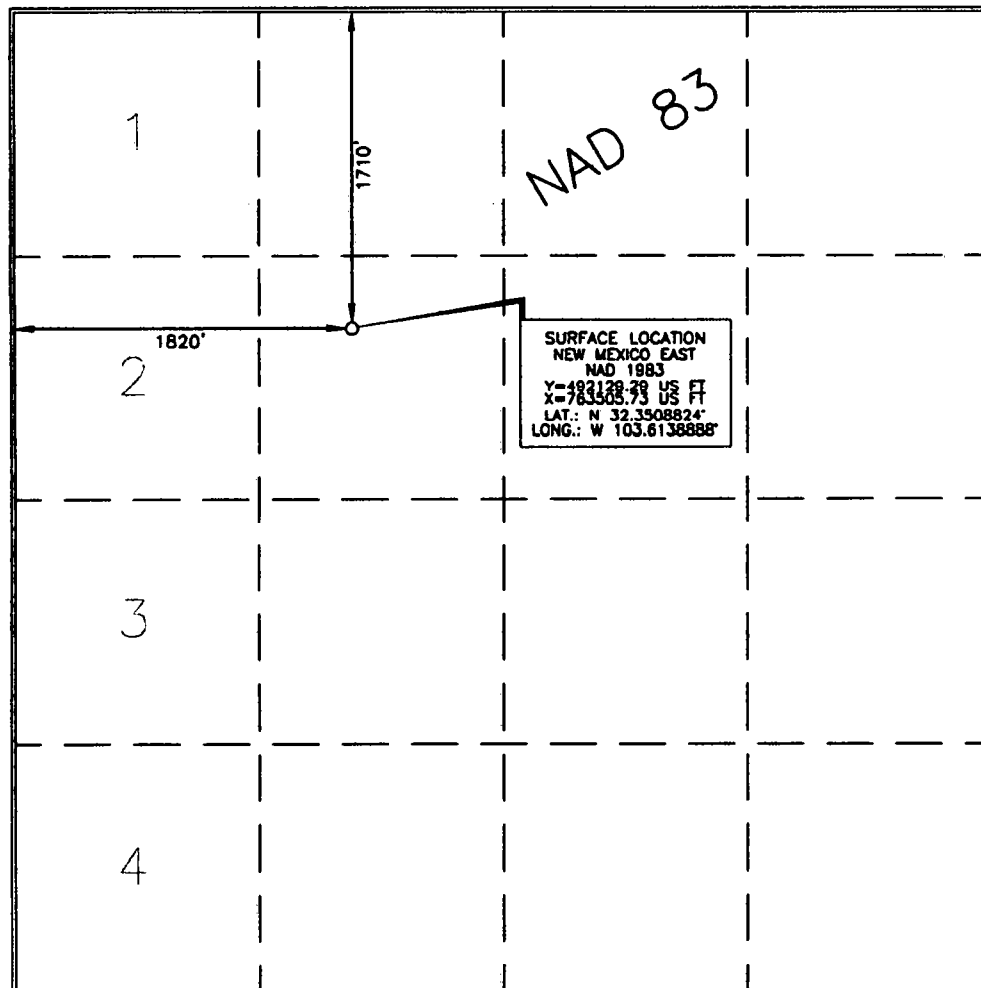
UL or lot no.	Section	Township	Range	Lot Idn	Feet from the	North/South line	Feet from the	East/West line	County
F	31	22 SOUTH	33 EAST, N.M.P.M.		1710'	NORTH	1820'	WEST	LEA

Bottom Hole Location If Different From Surface

UL or lot no.	Section	Township	Range	Lot Idn	Feet from the	North/South line	Feet from the	East/West line	County
F	31	22 SOUTH	33 EAST		1702'	NORTH	1810'	WEST	LEA

Dedicated Acres	Joint or Infill	Consolidation Code	Order No.

No allowable will be assigned to this completion until all interests have been consolidated or a non-standard unit has been approved by the division.



OPERATOR CERTIFICATION

I hereby certify that the information contained herein is true and complete to the best of my knowledge and belief, and that this organization either owns a working interest or unleased mineral interest in the land including the proposed bottom hole location or has a right to drill this well at this location pursuant to a contract with an owner of such a mineral or working interest, or to a voluntary pooling agreement or a compulsory pooling order heretofore entered by the division.

Roni Mathew 1/27/20

Signature Date

RONI MATHEW

Printed Name

roni_mathew@oxy.com

E-mail Address

SURVEYOR CERTIFICATION

I hereby certify that the well location shown on this plat was placed from field notes of actual surveys made by me or under my supervision, and that the same is true and correct to the best of my belief.

Terry J. Asel 15079
Date of Survey

Signature and Seal of Professional Surveyor

Terry J. Asel 3/23/2019
Certificate Number 15079

WO# 190225WL (KA)