

District I  
1625 N. French Dr., Hobbs, NM 88240  
Phone: (575) 393-6161 Fax: (575) 393-0720  
District II  
811 S. First St., Artesia, NM 88210  
Phone: (575) 748-1283 Fax: (575) 748-9720  
District III  
1000 Rio Brazos Road, Aztec, NM 87410  
Phone: (505) 334-6178 Fax: (505) 334-6170  
District IV  
1220 S. St. Francis Dr., Santa Fe, NM 87505  
Phone: (505) 476-3460 Fax: (505) 476-3462

State of New Mexico  
Energy, Minerals & Natural Resources  
Department  
OIL CONSERVATION DIVISION  
1220 South St. Francis Dr.  
Santa Fe, NM 87505

FORM C-102  
Revised August 1, 2011  
Submit one copy to appropriate  
District Office

☐ AMENDED REPORT

WELL LOCATION AND ACREAGE DEDICATION PLAT

<sup>1</sup> API Number <b>30-025-46156</b>	<sup>2</sup> Pool Code <b>98092</b>	<sup>3</sup> Pool Name <b>WC025 G09 S2433361; UPPER WOLFCAMP</b>
<sup>4</sup> Property Code <b>325384</b>	<sup>5</sup> Property Name <b>DURANGO 2 STATE</b>	
<sup>6</sup> Well Number <b>705H</b>	<sup>7</sup> Elevation <b>3430'</b>	
<sup>8</sup> OGRID No. <b>7377</b>	<sup>9</sup> Operator Name <b>EOG RESOURCES, INC.</b>	

<sup>10</sup>Surface Location

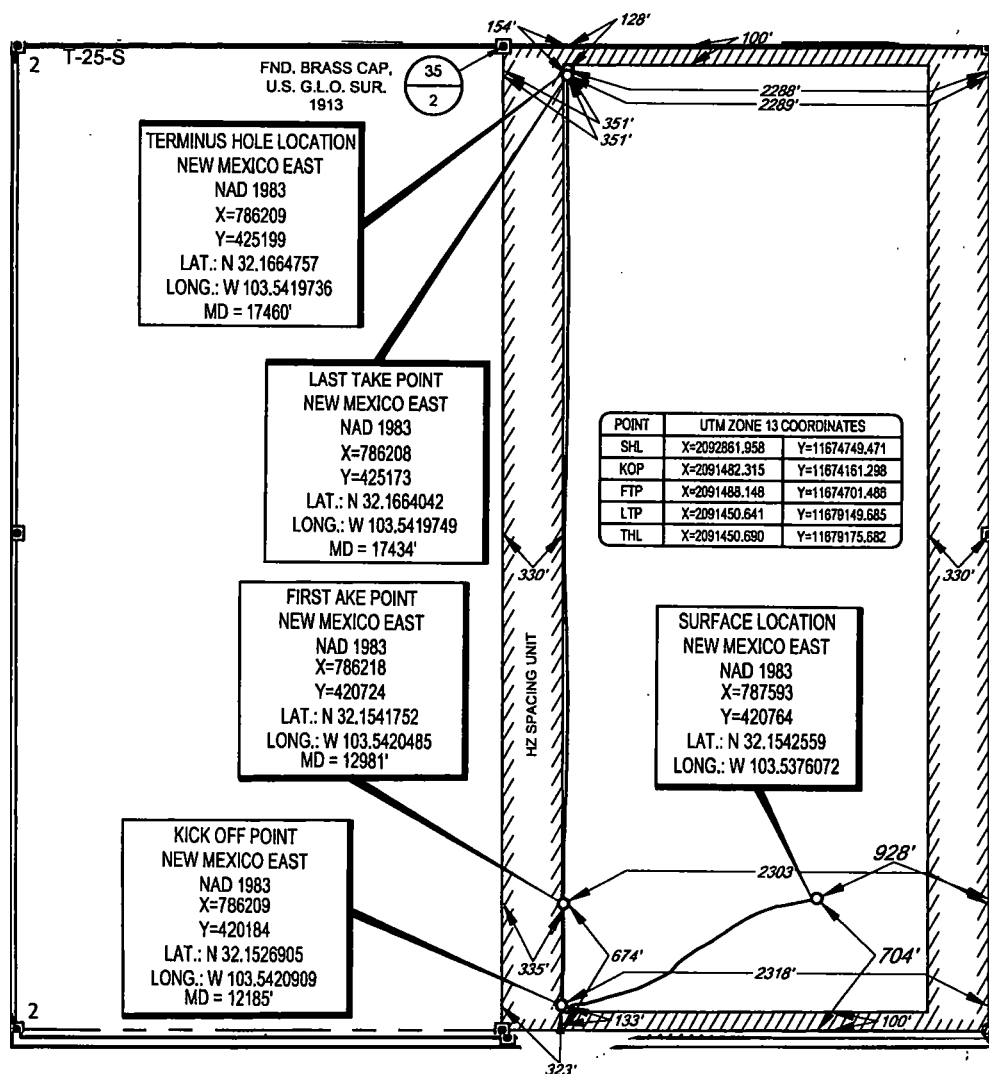
UL or lot no.	Section	Township	Range	Lot Idn	Feet from the	North/South line	Feet from the	East/West line	County
<b>P</b>	<b>2</b>	<b>25-S</b>	<b>33-E</b>	<b>-</b>	<b>704'</b>	<b>SOUTH</b>	<b>928'</b>	<b>EAST</b>	<b>LEA</b>

<sup>11</sup>Bottom Hole Location If Different From Surface

UL or lot no.	Section	Township	Range	Lot Idn	Feet from the	North/South line	Feet from the	East/West line	County
<b>B</b>	<b>2</b>	<b>25-S</b>	<b>33-E</b>	<b>-</b>	<b>128'</b>	<b>NORTH</b>	<b>2288'</b>	<b>EAST</b>	<b>LEA</b>

<sup>12</sup> Dedicated Acres <b>319.69</b>	<sup>13</sup> Joint or Infill	<sup>14</sup> Consolidation Code	<sup>15</sup> Order No.
--	-------------------------------	----------------------------------	-------------------------

No allowable will be assigned to this completion until all interests have been consolidated or a non-standard unit has been approved by the division.



<sup>17</sup>OPERATOR CERTIFICATION

I hereby certify that the information contained herein is true and complete to the best of my knowledge and belief, and that this organization either owns a working interest or unleased mineral interest in the land including the proposed bottom hole location or has a right to drill this well at this location pursuant to a contract with an owner of such a mineral or working interest, or to a voluntary pooling agreement or a compulsory pooling order heretofore entered by the division.

*Kay Maddox* 01/20/2020  
Signature Date

**Kay Maddox**  
Printed Name

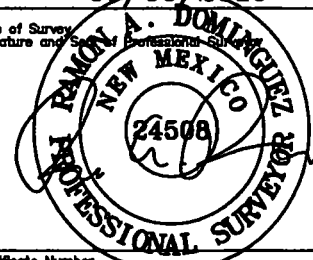
**Kay\_Maddox@eogresources.com**  
E-mail Address

<sup>18</sup>SURVEYOR CERTIFICATION

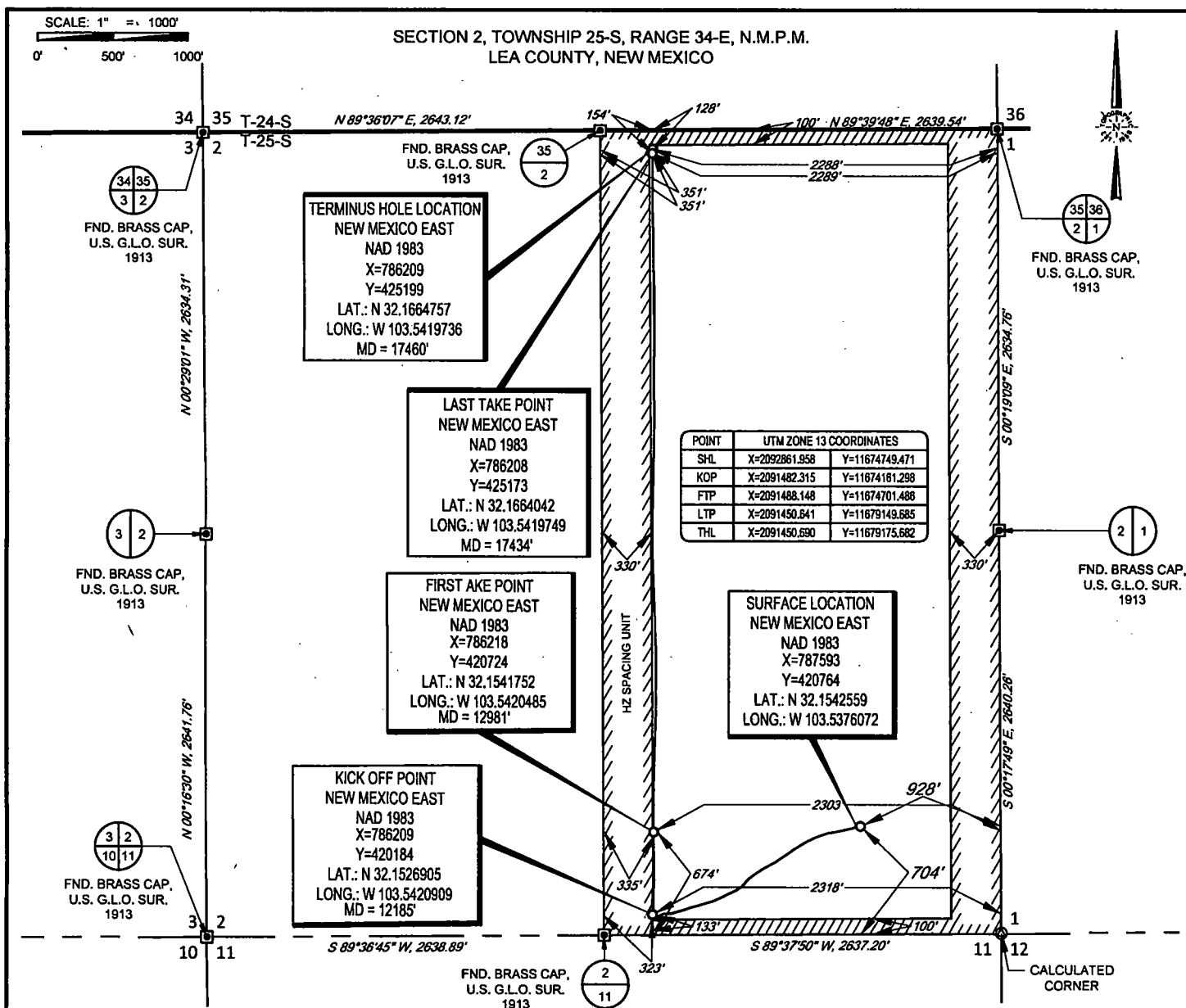
I hereby certify that the well location shown on this plat was plotted from field notes of actual surveys made by me or under my supervision, and that the same is true to the best of my belief.

06/06/2019

Date of Survey Signature and Seal

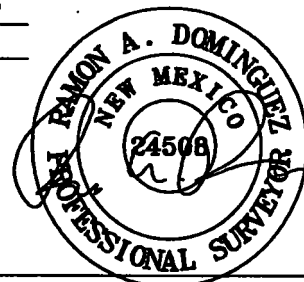


Certificate Number



**TOPOGRAPHIC**  
LOYALTY INNOVATION LEGACY

1400 EVERMAN PARKWAY, Ste. 146 • FT. WORTH, TEXAS 76140  
TELEPHONE: (817) 744-7512 • FAX (817) 744-7554  
2803 NORTH BIG SPRING • MIDLAND, TEXAS 79705  
TELEPHONE: (432) 682-1653 OR (800) 787-1653 • FAX (432) 682-1743  
WWW.TOPOGRAPHIC.COM



Ramon A. Dominguez, P.S. No. 24508  
DECEMBER 23, 2019

**Geog resources, Inc.**

DURANGO 2 STATE #705H AS-COMPLETED	REVISION:		NOTES:
DATE: 12/21/2019			1. ORIGINAL DOCUMENT SIZE: 8.5" X 11" 2. ALL BEARINGS, DISTANCES, AND COORDINATE VALUES CONTAINED HEREIN ARE GRID BASED UPON THE NEW MEXICO COORDINATE SYSTEM OF 1983, EAST ZONE, U.S. SURVEY FEET. 3. THIS WELL LOCATION SHOWN HEREON HAS BEEN SURVEYED ON THE GROUND UNDER MY SUPERVISION AND PREPARED ACCORDING TO THE EVIDENCE FOUND AT THE TIME OF SURVEY, AND DATA PROVIDED BY EOG RESOURCES, INC. THIS CERTIFICATION IS MADE AND LIMITED TO THOSE PERSONS OR ENTITIES SHOWN ON THE FACE OF THIS PLAT AND IS NON-TRANSFERABLE. THIS SURVEY IS CERTIFIED FOR THIS TRANSACTION ONLY.
FILE: AD_DURANGO_2_STATE_705H			
DRAWN BY: TRG			
SHEET: 1 OF 1			

**HOBBS OCD**

JAN 23 2020

**RECEIVED**Intent ☐ As Drilled ☒ XXXAPI #  
30-025-46156Operator Name:  
EOG RESOURCES, INCProperty Name:  
DURANGO 2 STATEWell Number  
705H

## Kick Off Point (KOP)

UL	Section	Township	Range	Lot	Feet	From N/S	Feet	From E/W	County
O	2	25S	33E		133	SOUTH	2318	EAST	LEA
Latitude					Longitude			NAD	
32.1526905					103.5420909			1983	

## First Take Point (FTP)

UL	Section	Township	Range	Lot	Feet	From N/S	Feet	From E/W	County
O	2	25S	33E		674	SOUTH	2303	EAST	LEA
Latitude					Longitude			NAD	
32.1541752					103.5420485			1983	

## Last Take Point (LTP)

UL	Section	Township	Range	Lot	Feet	From N/S	Feet	From E/W	County
B	2	25S	33E		154	NORTH	2289	EAST	LEA
Latitude					Longitude			NAD	
32.1664042					103.5419749			1983	

Is this well the defining well for the Horizontal Spacing Unit?

☐ NO

Is this well an infill well?

☐ INFILL

If infill is yes please provide API if available, Operator Name and well number for Defining well for Horizontal Spacing Unit.

API #  
30-025-46157Operator Name:  
EOG RESOURCES, INCProperty Name:  
DURANGO 2 STATEWell Number  
#706H

KZ 06/29/2018