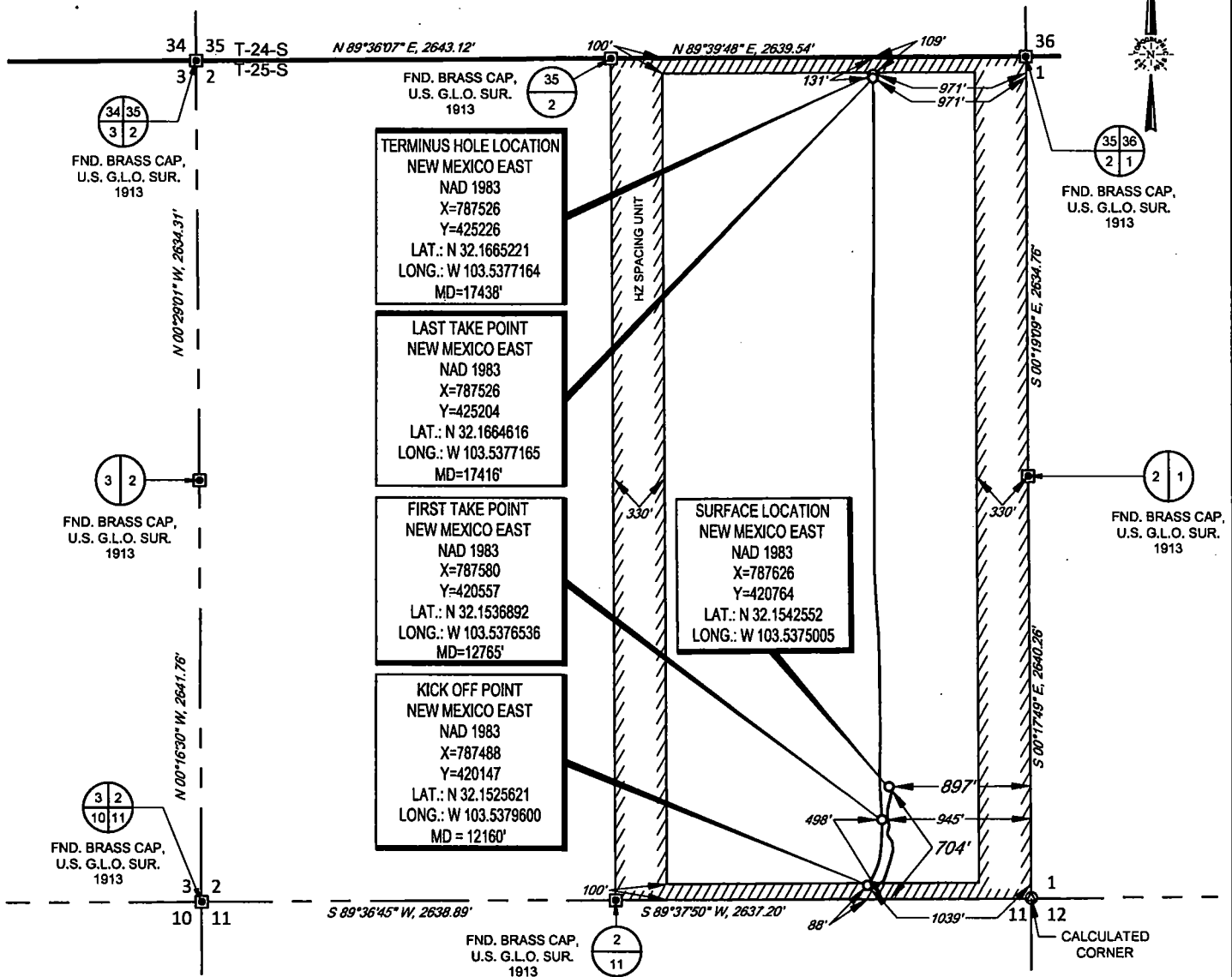


SCALE: 1" = 1000'

0' 500' 1000'

SECTION 2, TOWNSHIP 25-S, RANGE 33-E, N.M.P.M.
LEA COUNTY, NEW MEXICO



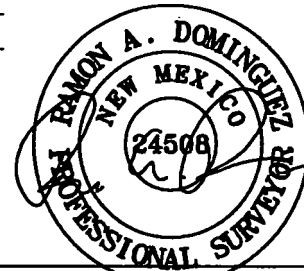
LEASE NAME & WELL NO.: DURANGO 2 STATE #707H
SECTION 2 TWP 25-S RGE 33-E SURVEY N.M.P.M.
COUNTY LEA STATE NM ELEVATION 3429'
DESCRIPTION 704' FSL & 897' FEL

POINT	UTM ZONE 13 COORDINATES	
SHL	X=2092894.953	Y=11674749.875
KOP	X=2092761.166	Y=11674131.953
FTP	X=2092850.408	Y=11674543.195
LTP	X=2092767.816	Y=11679188.453
THL	X=2092767.529	Y=11679210.449



TOPOGRAPHIC
LOYALTY INNOVATION LEGACY

1400 EVERMAN PARKWAY, Ste. 146 • FT. WORTH, TEXAS 76140
TELEPHONE: (817) 744-7512 • FAX (817) 744-7554
2803 NORTH BIG SPRING • MIDLAND, TEXAS 79705
TELEPHONE: (432) 682-1853 OR (800) 767-1853 • FAX (432) 682-1743
WWW.TOPOGRAPHIC.COM



Ramon A. Dominguez, P.S. No. 24508
DECEMBER 26, 2019

Geog resources, Inc.

DURANGO 2 STATE #707H AS-COMPLETED	REVISION:	
DATE: 12/26/2019		
FILE: AD_DURANGO_2_STATE_707H		
DRAWN BY: A.V.F.		
SHEET: 1 OF 1		

NOTES:

1. ORIGINAL DOCUMENT SIZE: 8.5" X 11"
2. ALL BEARINGS, DISTANCES, AND COORDINATE VALUES CONTAINED HEREIN ARE GRID BASED UPON THE NEW MEXICO COORDINATE SYSTEM OF 1983, EAST ZONE, U.S. SURVEY FEET.
3. THIS WELL LOCATION SHOWN HEREON HAS BEEN SURVEYED ON THE GROUND UNDER MY SUPERVISION AND PREPARED ACCORDING TO THE EVIDENCE FOUND AT THE TIME OF SURVEY, AND DATA PROVIDED BY GEO RESOURCES, INC. THIS CERTIFICATION IS MADE AND LIMITED TO THOSE PERSONS OR ENTITIES SHOWN ON THE FACE OF THIS PLAT AND IS NON-TRANSFERABLE. THIS SURVEY IS CERTIFIED FOR THIS TRANSACTION ONLY.

Intent ☐ As Drilled ☒ XXX

API # 30-025-46158			
Operator Name: EOG RESOURCES, INC		Property Name: DURANGO 2 STATE	Well Number 707H

Kick Off Point (KOP)

UL P	Section 2	Township 25S	Range 33E	Lot	Feet 88	From N/S SOUTH	Feet 1039	From E/W EAST	County LEA
Latitude 32.1525621					Longitude 103.5379600			NAD 1983	

First Take Point (FTP)

UL P	Section 2	Township 25S	Range 33E	Lot	Feet 498	From N/S SOUTH	Feet 945	From E/W EAST	County LEA
Latitude 32.1536892					Longitude 103.5376536			NAD 1983	

Last Take Point (LTP)

UL A	Section 2	Township 25S	Range 33E	Lot	Feet 131	From N/S NORTH	Feet 971	From E/W EAST	County LEA
Latitude 32.1664616					Longitude 103.5377165			NAD 1983	

Is this well the defining well for the Horizontal Spacing Unit? ☐ NO

Is this well an infill well? ☐ INFILL

If infill is yes please provide API if available, Operator Name and well number for Defining well for Horizontal Spacing Unit.

API # 30-025-46157			
Operator Name: EOG RESOURCES, INC		Property Name: DURANGO 2 STATE	Well Number #706H

KZ 06/29/2018