

District I
1625 N. French Dr., Hobbs, NM 88240
Phone: (575) 393-6161 Fax: (575) 393-0720
District II
811 S. First St., Artesia, NM 88210
Phone: (575) 748-1283 Fax: (575) 748-9720
District III
1000 Rio Brazos Road, Aztec, NM 87410
Phone: (505) 334-6178 Fax: (505) 334-6170
District IV
1220 S. St. Francis Dr., Santa Fe, NM 87505
Phone: (505) 476-3460 Fax: (505) 476-3462

State of New Mexico
Energy, Minerals & Natural Resources Department
OIL CONSERVATION DIVISION
1220 South St. Francis Dr.
Santa Fe, NM 87505

Form C-102
Revised August 1, 2011
Submit one copy to appropriate
District Office

HOBBS OCD
JAN 21 2020
RECEIVED

☐ AMENDED REPORT

WELL LOCATION AND ACREAGE DEDICATION PLAT

¹ API Number 30-025-46400	² Pool Code 96553	³ Pool Name Ojo Chiso; Bone Spring
⁴ Property Code 326030	⁵ Property Name QUESO BLANCO 13 STATE COM	⁶ Well Number 603H
⁷ OGRID No. 372165	⁸ Operator Name CENTENNIAL RESOURCE PRODUCTION, LLC	⁹ Elevation 3506.8'

¹⁰ Surface Location

UL or lot no.	Section	Township	Range	Lot Idn	Feet from the	North/South line	Feet from the	East/West line	County
N	13	22S	34E		1225	SOUTH	1562	WEST	LEA

¹¹ Bottom Hole Location If Different From Surface

UL or lot no.	Section	Township	Range	Lot Idn	Feet from the	North/South line	Feet from the	East/West line	County
K	12	22S	34E		2534	SOUTH	2326	WEST	LEA
¹² Dedicated Acres 480	¹³ Joint or Infill	¹⁴ Consolidation Code	¹⁵ Order No.						

No allowable will be assigned to this completion until all interests have been consolidated or a non-standard unit has been approved by the division.

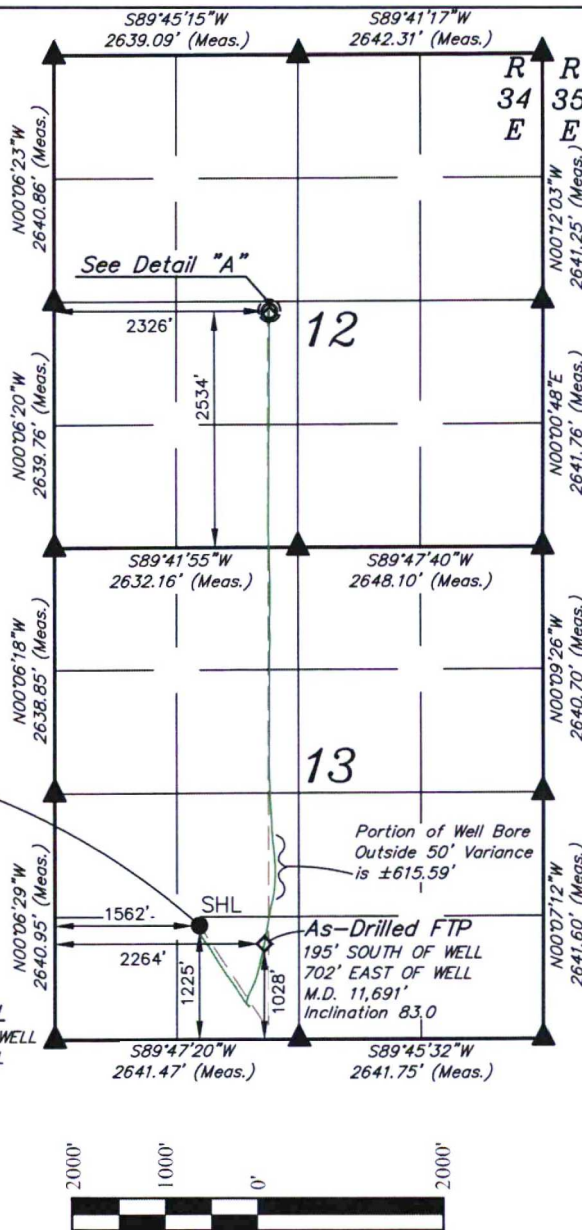
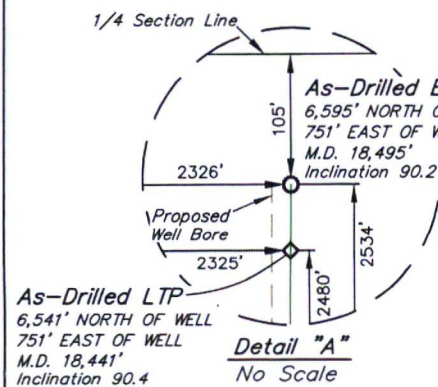
- ¹⁶
- = AS-DRILLED SURFACE HOLE LOCATION
 - ◆ = AS-DRILLED FTP/LTP
 - = AS-DRILLED BOTTOM HOLE LOCATION
 - ▲ = SECTION CORNER LOCATED

NOTE:

- Distances referenced on plat to section lines are perpendicular.
- Basis of Bearing is a Transverse Mercator Projection with a Central Meridian of W103°53'00" (NAD 83)
- Wellbore data provided by Centennial Resource Production, LLC.

APPROXIMATE WELL BORE DISTANCE FROM FTP TO LTP	
SECTION 12	2,480.10'
SECTION 13	4,268.73'
TOTAL	6,748.83'

AS-DRILLED
QUESO BLANCO 13
STATE COM 603H
Elev. Graded
Ground = 3506.8'



SCALE
DRAWN BY: R.J. 01-16-20

NAD 83 (AS-DRILLED SHL) LATITUDE = 32°23'16.14" (32.387817°) LONGITUDE = 103°25'37.68" (103.427134°) STATE PLANE NAD 83 (N.M. EAST) Y: 506004.17' X: 821064.55' UTM, NAD 83 (ZONE 13) Y: 11760184.67' X: 2125798.94'	NAD 83 (AS-DRILLED LTP) LATITUDE = 32°24'20.82" (32.405783°) LONGITUDE = 103°25'28.60" (103.424611°) STATE PLANE NAD 83 (N.M. EAST) Y: 512547.24' X: 821788.08' UTM, NAD 83 (ZONE 13) Y: 11766731.29' X: 2126481.56'
NAD 83 (AS-DRILLED FTP) LATITUDE = 32°23'14.18" (32.387273°) LONGITUDE = 103°25'29.51" (103.424864°) STATE PLANE NAD 83 (N.M. EAST) Y: 505812.33' X: 821767.21' UTM, NAD 83 (ZONE 13) Y: 11759997.25' X: 2126502.69'	NAD 83 (AS-DRILLED BHL) LATITUDE = 32°24'21.35" (32.405932°) LONGITUDE = 103°25'28.59" (103.424609°) STATE PLANE NAD 83 (N.M. EAST) Y: 512601.24' X: 821788.04' UTM, NAD 83 (ZONE 13) Y: 11766785.28' X: 2126481.19'

¹⁷ OPERATOR
CERTIFICATION

I hereby certify that the information contained herein is true and complete to the best of my knowledge and belief, and that this organization either owns a working interest or unleased mineral interest in the land including the proposed bottom hole location or has a right to drill this well at this location pursuant to a contract with an owner of such a mineral or working interest, or to a voluntary pooling agreement or a compulsory pooling order heretofore entered by the division.

Signature _____ Date 1/20/2020

Kanicia Schlichting

Printed Name

kanicia.schlichting@cdevinc.com

E-mail Address

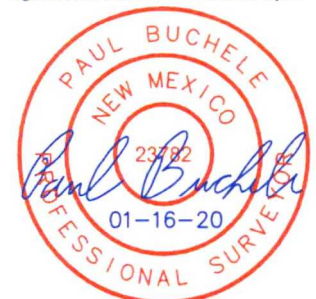
¹⁸ SURVEYOR
CERTIFICATION

I hereby certify that the well location shown on this plat was plotted from field notes of actual surveys made by me or under my supervision, and that the same is true and correct to the best of my belief.

January 15, 2020

Date of Survey

Signature and Seal of Professional Surveyor:



Certificate Number: