

District I  
1625 N. French Dr., Hobbs, NM 88240  
Phone: (575) 393-6161 Fax: (575) 393-0720  
District II  
811 S. First St., Artesia, NM 88210  
Phone: (575) 748-1283 Fax: (575) 748-9720  
District III  
1000 Rio Brazos Road, Aztec, NM 87410  
Phone: (505) 334-6178 Fax: (505) 334-6170  
District IV  
1220 S. St. Francis Dr., Santa Fe, NM 87505  
Phone: (505) 476-3460 Fax: (505) 476-3462

State of New Mexico  
Energy, Minerals & Natural Resources Department  
OIL CONSERVATION DIVISION  
1220 South St. Francis Dr.  
Santa Fe, NM 87505

Form C-102  
Revised August 1, 2011  
Submit one copy to appropriate  
District Office  
☐ AMENDED REPORT

HOBBS OCD  
FEB 03 2020  
RECEIVED

WELL LOCATION AND ACREAGE DEDICATION PLAT

<sup>1</sup> API Number 30-025-46344	<sup>2</sup> Pool Code 2205	<sup>3</sup> Post-Mile Antelope Ridge, One Spring, North
<sup>4</sup> Property Code 321644	<sup>5</sup> Property Name DUCK HUNT 1 STATE COM	<sup>6</sup> Well Number 302H
<sup>7</sup> OGRID No. 372165	<sup>8</sup> Operator Name CENTENNIAL RESOURCE PRODUCTION, LLC	<sup>9</sup> Elevation 3367.9'

"Surface Location

UL or lot no.	Section	Township	Range	Lot Idn	Feet from the	North/South line	Feet from the	East/West line	County
J	1	23S	34E		2039	SOUTH	1985	EAST	LEA

"Bottom Hole Location If Different From Surface

UL or lot no.	Section	Township	Range	Lot Idn	Feet from the	North/South line	Feet from the	East/West line	County
O	12	23S	34E		91	SOUTH	1653	EAST	LEA
<sup>12</sup> Dedicated Acres 240	<sup>13</sup> Joint or Infill	<sup>14</sup> Consolidation Code	<sup>15</sup> Order No.						

No allowable will be assigned to this completion until all interests have been consolidated or a non-standard unit has been approved by the division.

- "● = AS-DRILLED SURFACE HOLE LOCATION
- ◇ = AS-DRILLED FIRST TAKE POINT
- = AS-DRILLED LTP/BHL
- ▲ = SECTION CORNER LOCATED
- △ = SECTION CORNER RE-ESTABLISHED. (Not Set on Ground.)

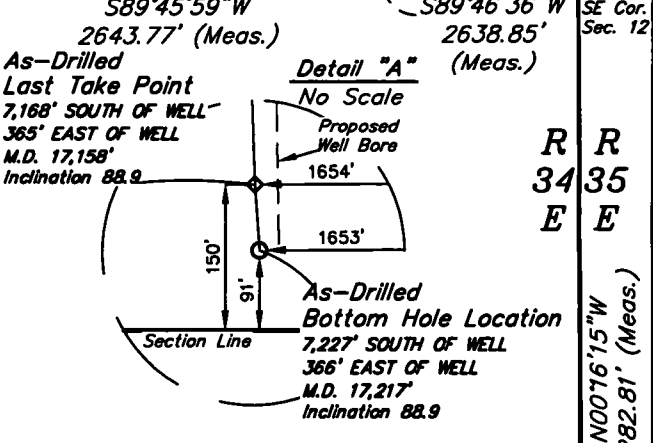
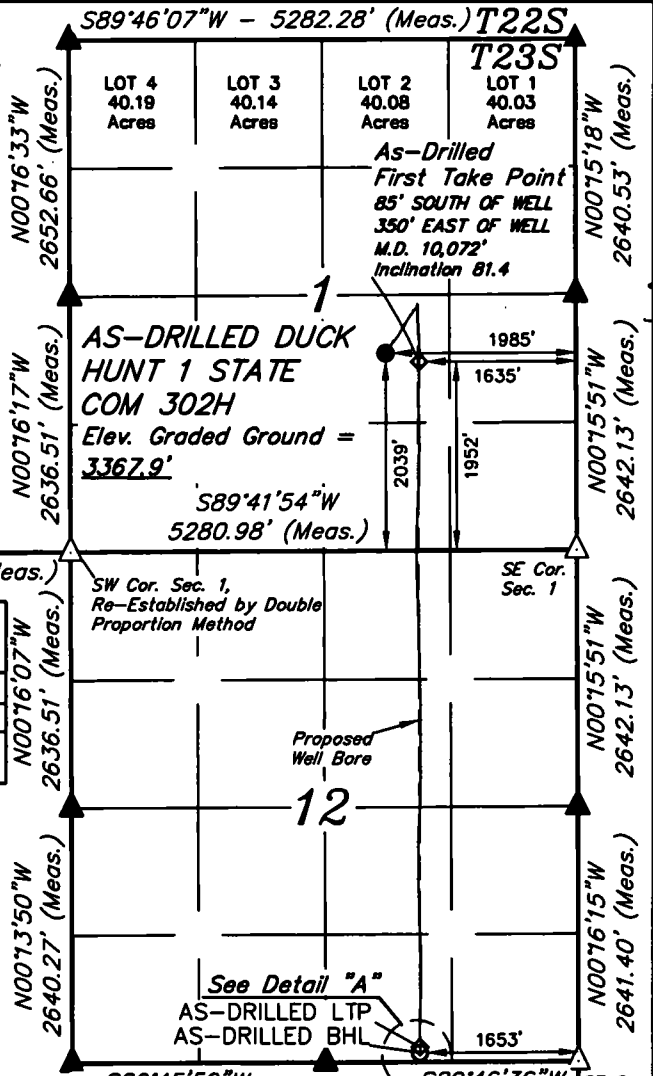
NOTE:  
• Distances referenced on plat to section lines are perpendicular.  
• Basis of Bearing is a Transverse Mercator Projection with a Central Meridian of W103°53'00"  
• Southeast Corner of Sections 1 & 12 Re-Established by Single Proportion Method.

SW Cor. Sec. 6, Re-Established by Single Proportion Method

APPROXIMATE WELL BORE DISTANCE FROM FTP TO LTP

SECTION 1	1,953.27'
SECTION 12	5,132.48'
TOTAL	7,085.75'

R 33 E  
R 34 E



SCALE  
DRAWN BY: T.A. 12-12-19

"OPERATOR CERTIFICATION

I hereby certify that the information contained herein is true and complete to the best of my knowledge and belief, and that this organization either owns a working interest or unleased mineral interest in the land including the proposed bottom hole location or has a right to drill this well at this location pursuant to a contract with an owner of such a mineral or working interest, or to a voluntary pooling agreement or a compulsory pooling order heretofore entered by the division.

Signature: *Sarah Ferreyros* Date: 1/27/20  
Printed Name: sarah.ferreyros  
E-mail Address: ccdevinc.com

"SURVEYOR CERTIFICATION

I hereby certify that the well location shown on this plat was plotted from field notes of actual surveys made by me or under my supervision, and that the same is true and correct to the best of my belief.

September 26, 2019  
Date of Survey  
Signature and Seal of Professional Surveyor:



Certificate Number:

NAD 83 (AS-DRILLED SHL)

LATITUDE = 32°19'55.14" (32.331985°)
LONGITUDE = 103°25'17.92" (103.421644°)
STATE PLANE NAD 83 (N.M. EAST)
Y: 485706.35' X: 822932.53'
UTM, NAD 83 (ZONE 13)
Y: 11739901.49' X: 2127793.08'

NAD 83 (AS-DRILLED FTP)

LATITUDE = 32°19'54.29" (32.331748°)
LONGITUDE = 103°25'13.84" (103.420510°)
STATE PLANE NAD 83 (N.M. EAST)
Y: 485623.33' X: 823283.47'
UTM, NAD 83 (ZONE 13)
Y: 11739820.67' X: 2128144.49'

NAD 83 (AS-DRILLED LTP)

LATITUDE = 32°18'44.21" (32.312281°)
LONGITUDE = 103°25'14.03" (103.420563°)
STATE PLANE NAD 83 (N.M. EAST)
Y: 478541.06' X: 823327.49'
UTM, NAD 83 (ZONE 13)
Y: 11732739.71' X: 2128232.57'

NAD 83 (AS-DRILLED BHL)

LATITUDE = 32°18'43.63" (32.312119°)
LONGITUDE = 103°25'14.01" (103.420559°)
STATE PLANE NAD 83 (N.M. EAST)
Y: 478482.09' X: 823329.01'
UTM, NAD 83 (ZONE 13)
Y: 11732680.76' X: 2128234.46'

Intent ☐ As Drilled ☒

API #

30-025-46344

Operator Name: Centennial Resource Production, LLC	Property Name: Duck Hunt 1 State Com	Well Number 302H
---	---	---------------------

Kick Off Point (KOP)

UL J	Section 1	Township 23S	Range 34E	Lot J	Feet 1952	From N/S S	Feet 1635	From E/W E	County Lea
Latitude 32.331748					Longitude -103.420510			NAD 83	

First Take Point (FTP)

UL J	Section 1	Township 23S	Range 34E	Lot J	Feet 1952	From N/S S	Feet 1635	From E/W E	County Lea
Latitude 32.331748					Longitude -103.420510			NAD 83	

Last Take Point (LTP)

UL O	Section 12	Township 23S	Range 34E	Lot O	Feet 91	From N/S S	Feet 1653	From E/W E	County Lea
Latitude 32.312281					Longitude -103.420563			NAD 83	

Is this well the defining well for the Horizontal Spacing Unit? ☐ Yes

Is this well an infill well? ☐ No

If infill is yes please provide API if available, Operator Name and well number for Defining well for Horizontal Spacing Unit.

API #

Operator Name:	Property Name:	Well Number
----------------	----------------	-------------

KZ 06/29/2018