

District I
1625 N. French Dr., Hobbs, NM 88240
Phone: (575) 393-6161 Fax: (575) 393-0720
District II
811 S. First St., Artesia, NM 88210
Phone: (575) 748-1283 Fax: (575) 748-9720
District III
1000 Rio Brazos Road, Aztec, NM 87410
Phone: (505) 334-6178 Fax: (505) 334-6170
District IV
1220 S. St. Francis Dr., Santa Fe, NM 87505
Phone: (505) 476-3460 Fax: (505) 476-3462

State of New Mexico
Energy, Minerals & Natural Resources Department
OIL CONSERVATION DIVISION
1220 South St. Francis Dr.
Santa Fe, NM 87505

Form C-102
Revised August 1, 2011
Submit one copy to appropriate
District Office

FEB 03 2020

☐ AMENDED REPORT

RECEIVED

WELL LOCATION AND ACREAGE DEDICATION PLAT

¹ API Number 30-025-46022	² Pool Code 96553	³ Pool Name Ojo Chiso; Bone Spring
⁴ Property Code 318034	⁵ Property Name TOUR BUS 23 STATE	⁶ Well Number 101H
⁷ OGRID No. 372165	⁸ Operator Name CENTENNIAL RESOURCE PRODUCTION, LLC	⁹ Elevation 3481.7'

¹⁰ Surface Location

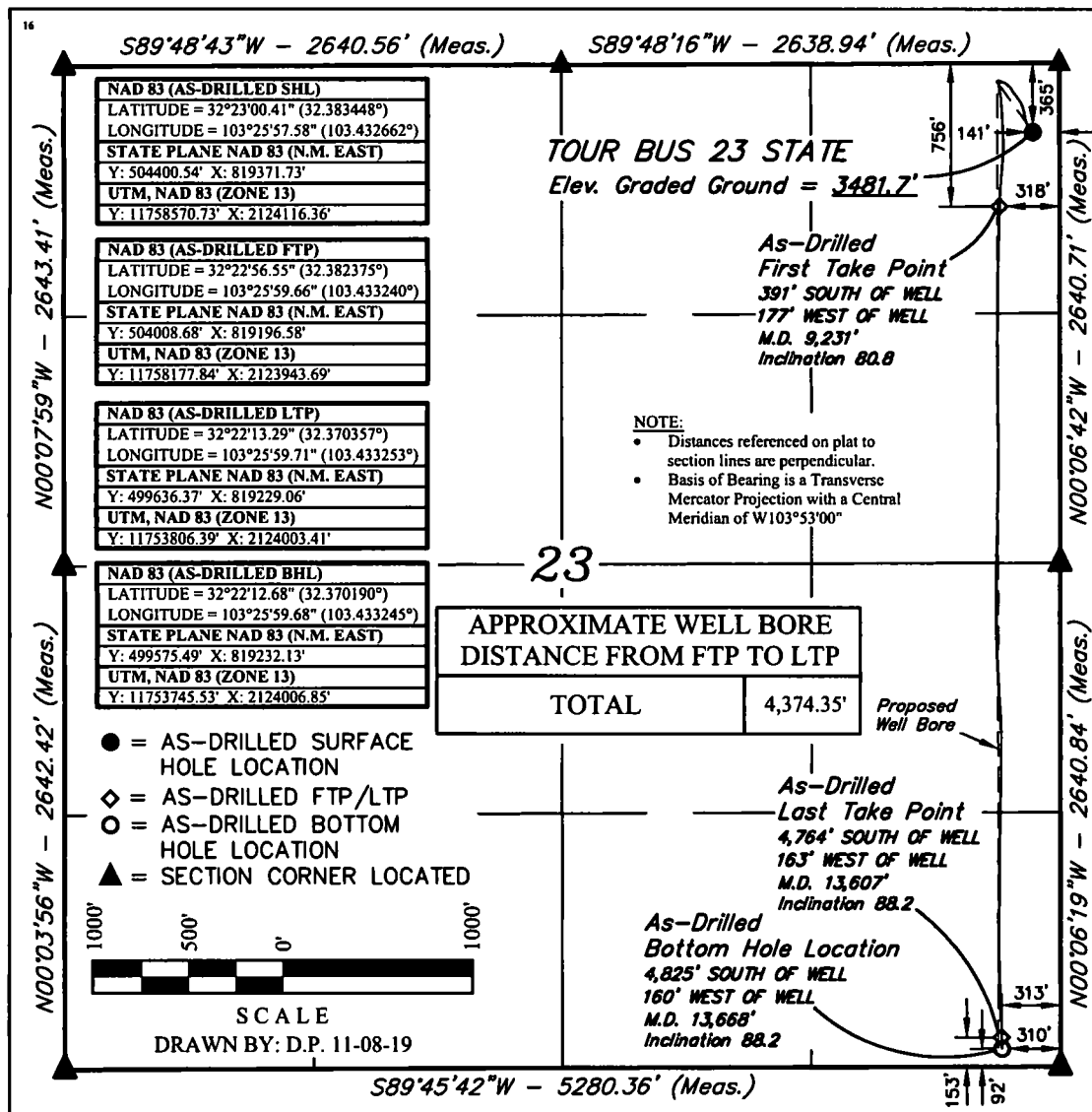
UL or lot no.	Section	Township	Range	Lot Idn	Feet from the	North/South line	Feet from the	East/West line	County
A	23	22S	34E		365	NORTH	141	EAST	LEA

¹¹ Bottom Hole Location If Different From Surface

UL or lot no.	Section	Township	Range	Lot Idn	Feet from the	North/South line	Feet from the	East/West line	County
P	23	22S	34E		92	SOUTH	310	EAST	LEA

¹² Dedicated Acres 160	¹³ Joint or Infill	¹⁴ Consolidation Code	¹⁵ Order No.
--------------------------------------	-------------------------------	----------------------------------	-------------------------

No allowable will be assigned to this completion until all interests have been consolidated or a non-standard unit has been approved by the division.



"OPERATOR CERTIFICATION"

I hereby certify that the information contained herein is true and complete to the best of my knowledge and belief, and that this organization either owns a working interest or unleased mineral interest in the land including the proposed bottom hole location or has a right to drill this well at this location pursuant to a contract with an owner of such a mineral or working interest, or to a voluntary pooling agreement or a compulsory pooling order heretofore entered by the division.

Signature: *Sarah Ferreyros* Date: 12/12/19

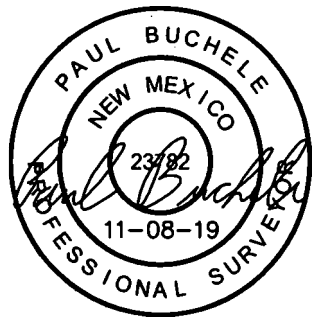
Printed Name: Sarah Ferreyros
E-mail Address: ccdevinc.com

"SURVEYOR CERTIFICATION"

I hereby certify that the well location shown on this plat was plotted from field notes of actual surveys made by me or under my supervision, and that the same is true and correct to the best of my belief.

September 30, 2019

Date of Survey
Signature and Seal of Professional Surveyor:



Certificate Number:

Intent ☐ As Drilled ☒

API #
30-025-46022

Operator Name: Centennial Resource Production, LLC	Property Name: Tour Bus 23 State	Well Number 101H
-------------------------------------------------------	-------------------------------------	---------------------

Kick Off Point (KOP)

UL A	Section 23	Township 22S	Range 34E	Lot A	Feet 756	From N/S N	Feet 318	From E/W E	County Lea
Latitude 32.382375					Longitude -103.433240			NAD 83	

First Take Point (FTP)

UL A	Section 23	Township 22S	Range 34E	Lot A	Feet 756	From N/S N	Feet 318	From E/W E	County Lea
Latitude 32.382375					Longitude -103.433240			NAD 83	

Last Take Point (LTP)

UL P	Section 23	Township 22S	Range 34E	Lot P	Feet 153	From N/S S	Feet 313	From E/W E	County Lea
Latitude 32.370357					Longitude -103.433253			NAD 83	

Is this well the defining well for the Horizontal Spacing Unit? ☐ No

Is this well an infill well? ☐ Yes

If infill is yes please provide API if available, Operator Name and well number for Defining well for Horizontal Spacing Unit.

API #
30-025-44289

Operator Name: Centennial Resource Prod, LLC	Property Name: Tour Bus 23 State	Well Number 301H
-------------------------------------------------	-------------------------------------	---------------------

KZ 06/29/2018