

DISTRICT I  
1625 N. FRENCH DR., HOBBS, NM 88240  
Phone: (505) 593-0161 Fax: (505) 593-0720

DISTRICT II  
811 S. FIRST ST., ARTESIA, NM 88210  
Phone: (505) 748-1283 Fax: (505) 748-0720

DISTRICT III  
1000 RIO BRAZOS RD., AZTEC, NM 87410  
Phone: (505) 334-6176 Fax: (505) 334-6170

DISTRICT IV  
1220 S. ST. FRANCIS DR., SANTA FE, NM 87505  
Phone: (505) 478-3460 Fax: (505) 478-3462

State of New Mexico  
Energy, Minerals & Natural Resources Department  
OIL CONSERVATION DIVISION  
1220 SOUTH ST. FRANCIS DR.  
Santa Fe, New Mexico 87505

HOBBS OCD  
JAN 20 2020  
RECEIVED

Form C-102  
Revised August 1, 2011  
Submit one copy to appropriate  
District Office

☐ AMENDED REPORT

WELL LOCATION AND ACREAGE DEDICATION PLAT

API Number <b>70-025-46812</b>	Pool Code <b>96776 28117</b>	Pool Name <b>WC-025 G-09 5263504N; WOLF CAMP</b>
Property Code <b>327071</b>	Property Name <b>TALCO 16-21 STATE FED COM</b>	Well Number <b>002H</b>
GRID No. <b>6137</b>	Operator Name <b>DEVON ENERGY PRODUCTION COMPANY, L.P.</b>	Elevation <b>3201.6'</b>

Surface Location

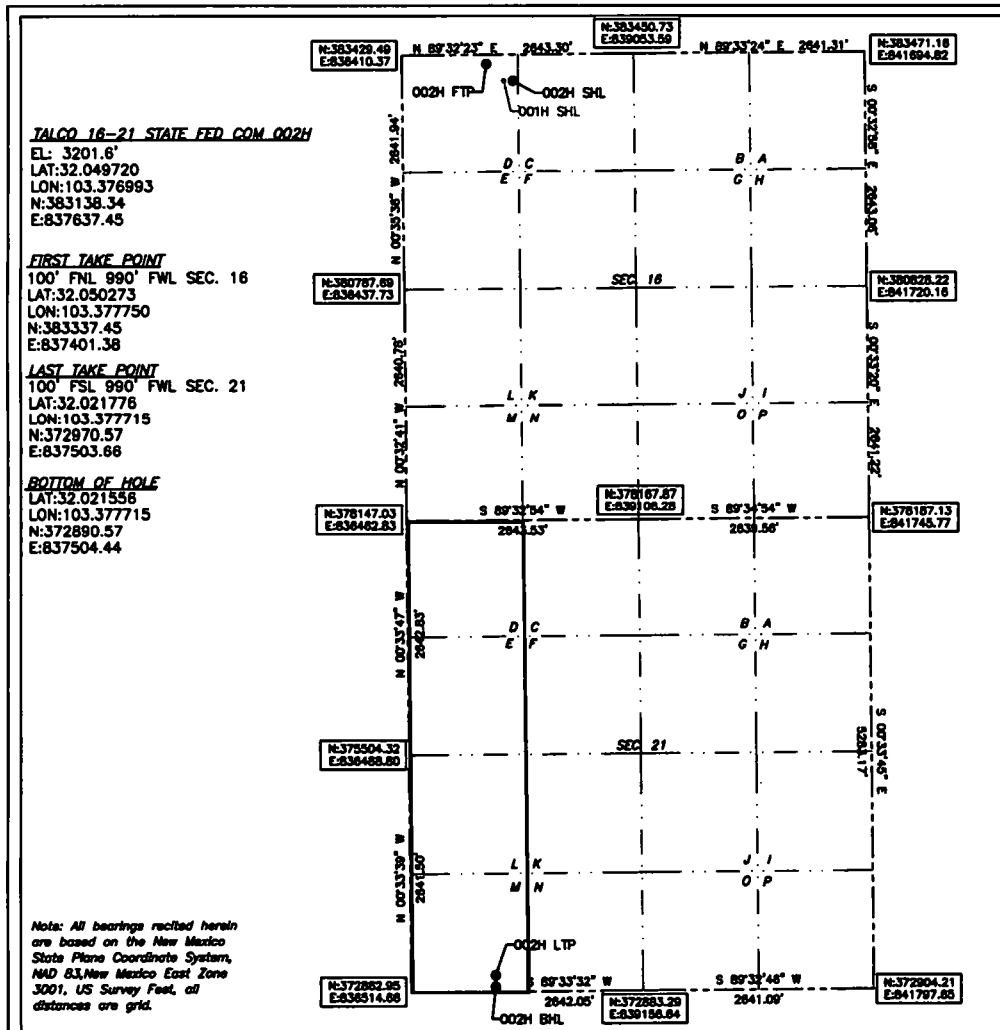
UL or lot No.	Section	Township	Range	Lot Idn	Feet from the	North/South line	Feet from the	East/West line	County
D	16	26-S	35-E		301	NORTH	1224	WEST	LEA

Bottom Hole Location If Different From Surface

UL or lot No.	Section	Township	Range	Lot Idn	Feet from the	North/South line	Feet from the	East/West line	County
M	21	26-S	35-E		20	SOUTH	990	WEST	LEA

Dedicated Acres <b>160.720</b>	Joint or Infill	Consolidation Code	Order No.
-----------------------------------	-----------------	--------------------	-----------

NO ALLOWABLE WILL BE ASSIGNED TO THIS COMPLETION UNTIL ALL INTERESTS HAVE BEEN CONSOLIDATED  
OR A NON-STANDARD UNIT HAS BEEN APPROVED BY THE DIVISION



OPERATOR CERTIFICATION

I hereby certify that the information herein is true and complete to the best of my knowledge and belief, and that this organization either owns a working interest or unleased mineral interest in the land including the proposed bottom hole location or has a right to drill this well at this location pursuant to a contract with an owner of such mineral or working interest, or to a voluntary pooling agreement or a compulsory pooling order heretofore entered by the division.

8/15/2019

Signature

Date

Rebecca Deal, Regulatory Analyst

Printed Name

rebecca.deal@dvn.com

E-mail Address

SURVEYOR CERTIFICATION

I hereby certify that the well location shown on this plat was plotted from field notes of actual surveys made by me or under my supervision, and that the same is true and correct to the best of my belief.

06/2019

Date of Survey

Signature & Seal of Professional Surveyor



06/19/19

Certificate No. 22404

B. L. LAMAN

DRAWN BY: CM

Intent ☒ As Drilled ☐

API # <i>30-025-46872</i>			
Operator Name: DEVON ENERGY PRODUCTION COMPANY, LP.		Property Name: TALCO 16-21 STATE FED COM	Well Number 002H

Kick Off Point (KOP)

UL	Section 16	Township 26S	Range 35E	Lot	Feet 50	From N/S FNL	Feet 990	From E/W FWL	County LEA
Latitude 32.050415					Longitude -103.377742			NAD 83	

First Take Point (FTP)

UL D	Section 16	Township 26-S	Range 35-E	Lot	Feet 100	From N/S NORTH	Feet 990	From E/W WEST	County LEA
Latitude 32.050273					Longitude 103.377750			NAD 83	

Last Take Point (LTP)

UL M	Section 21	Township 26-S	Range 35-E	Lot	Feet 100	From N/S SOUTH	Feet 990	From E/W WEST	County LEA
Latitude 32.021776					Longitude 103.377715			NAD 83	

Is this well the defining well for the Horizontal Spacing Unit? ☐ N

Is this well an infill well? ☒ Y

If infill is yes please provide API if available, Operator Name and well number for Defining well for Horizontal Spacing Unit.

API #			
Operator Name: DEVON ENERGY PRODUCTION CO.		Property Name: TALCO 16-21 STATE FED COM	Well Number 1H

KZ 06/29/2018