

UNITED STATES  
DEPARTMENT OF THE INTERIOR  
BUREAU OF LAND MANAGEMENT

APPLICATION FOR PERMIT TO DRILL OR REENTER

FORM APPROVED  
OMB No. 1004-0137  
Expires: January 31, 2018

- 1a. Type of work: ☒ DRILL ☐ REENTER  
1b. Type of Well: ☒ Oil Well ☐ Gas Well ☐ Other  
1c. Type of Completion: ☐ Hydraulic Fracturing ☒ Single Zone ☐ Multiple Zone

2. Name of Operator  
DEVON ENERGY PRODUCTION COMPANY LP

3a. Address  
333 West Sheridan Avenue Oklahoma City OK 73102

3b. Phone No. (include area code)  
(800)583-3866

4. Location of Well (Report location clearly and in accordance with any State requirements. \*)

At surface LOT 4 / 535 FNL / 650 FWL / LAT 32.3392464 / LONG -103.7208515

At proposed prod. zone LOT 4 / 20 FSL / 1040 FWL / LAT 32.311764 / LONG -103.719594

5. Lease Serial No.  
NMNM063994

6. If Indian, Allottee or Tribe Name

7. If Unit or CA Agreement, Name and No.  
NMNM138276

8. Lease Name and Well No.  
BOUNDARY RAIDER 6-7 FED COM  
521H

9. API-Well No.

10. Field and Pool, or Exploratory  
SAND DUNES / BONE SPRING

11. Sec., T. R. M. or Blk. and Survey or Area  
SEC 6 / T23S / R32E / NMP

14. Distance in miles and direction from nearest town or post office\*

12. County or Parish  
LEA

13. State  
NM

15. Distance from proposed\*  
location to nearest  
property or lease line, ft.  
(Also to nearest drig. unit line, if any)  
535 feet

16. No of acres in lease  
980.63

17. Spacing Unit dedicated to this well  
320

18. Distance from proposed location\*  
to nearest well, drilling, completed,  
applied for, on this lease, ft.  
86 feet

19. Proposed Depth  
9995 feet / 19304 feet

20. BLM/BIA Bond No. in file  
FED: CO1104

21. Elevations (Show whether DF, KDB, RT, GL, etc.)  
3504 feet

22. Approximate date work will start\*  
03/14/2020

23. Estimated duration  
45 days

24. Attachments

The following, completed in accordance with the requirements of Onshore Oil and Gas Order No. 1, and the Hydraulic Fracturing rule per 43 CFR 3162.3-3 (as applicable)

1. Well plat certified by a registered surveyor.  
2. A Drilling Plan.  
3. A Surface Use Plan (if the location is on National Forest System Lands, the SUPO must be filed with the appropriate Forest Service Office).

4. Bond to cover the operations unless covered by an existing bond on file (see Item 20 above).  
5. Operator certification.  
6. Such other site specific information and/or plans as may be requested by the BLM.

25. Signature  
(Electronic Submission)

Name (Printed/Typed)  
Jenny Harms / Ph: (405)552-6560

Date  
03/18/2019

Title  
Regulatory Compliance Professional

Approved by (Signature)  
(Electronic Submission)

Name (Printed/Typed)  
Cody Layton / Ph: (575)234-5959

Date  
01/29/2020

Title  
Assistant Field Manager Lands & Minerals

Office  
CARLSBAD

Application approval does not warrant or certify that the applicant holds legal or equitable title to those rights in the subject lease which would entitle the applicant to conduct operations thereon.

Conditions of approval, if any, are attached.

Title 18 U.S.C. Section 1001 and Title 43 U.S.C. Section 1212, make it a crime for any person knowingly and willfully to make to any department or agency of the United States any false, fictitious or fraudulent statements or representations as to any matter within its jurisdiction.

GCN Rec 02/03/2020

KZ  
02/03/2020

APPROVED WITH CONDITIONS

(Continued on page 2)

REQUIRES NSL

\*(Instructions on page 2)

Approval Date: 01/29/2020

## PECOS DISTRICT DRILLING CONDITIONS OF APPROVAL

<b>OPERATOR'S NAME:</b>	<b>Devon Energy Production Company LP</b>
<b>LEASE NO.:</b>	<b>NMNM063994</b>
<b>WELL NAME &amp; NO.:</b>	<b>Boundary Raider 6-7 Fed Com 521H</b>
<b>SURFACE HOLE FOOTAGE:</b>	<b>535'/N &amp; 650'/W</b>
<b>BOTTOM HOLE FOOTAGE:</b>	<b>20'/S &amp; 1040'/W</b>
<b>LOCATION:</b>	<b>Section 6, T.23 S., R.32 E., NMPM</b>
<b>COUNTY:</b>	<b>Lea County, New Mexico</b>

COA

H2S	<input type="radio"/> Yes	<input checked="" type="radio"/> No	
Potash	<input checked="" type="radio"/> None	<input type="radio"/> Secretary	<input type="radio"/> R-111-P
Cave/Karst Potential	<input checked="" type="radio"/> Low	<input type="radio"/> Medium	<input type="radio"/> High
Cave/Karst Potential	<input type="radio"/> Critical		
Variance	<input type="radio"/> None	<input checked="" type="radio"/> Flex Hose	<input type="radio"/> Other
Wellhead	<input type="radio"/> Conventional	<input type="radio"/> Multibowl	<input checked="" type="radio"/> Both
Other	<input type="checkbox"/> 4 String Area	<input type="checkbox"/> Capitan Reef	<input type="checkbox"/> WIPP
Other	<input checked="" type="checkbox"/> Fluid Filled	<input checked="" type="checkbox"/> Cement Squeeze	<input type="checkbox"/> Pilot Hole
Special Requirements	<input type="checkbox"/> Water Disposal	<input checked="" type="checkbox"/> COM	<input type="checkbox"/> Unit

### A. HYDROGEN SULFIDE

A Hydrogen Sulfide (H2S) Drilling Plan shall be activated 500 feet prior to drilling into the **Sand Dunes, Triste Draw, Wildcat, and Bone Springs** formation. As a result, the Hydrogen Sulfide area must meet Onshore Order 6 requirements, which includes equipment and personnel/public protection items. If Hydrogen Sulfide is encountered, please provide measured values and formations to the BLM.

### B. CASING

#### Primary Casing Design:

1. The 13-3/8 inch surface casing shall be set at approximately **892 feet** (a minimum of **25 feet (Lea County)** into the Rustler Anhydrite and above the salt) and cemented to the surface.
  - a. If cement does not circulate to the surface, the appropriate BLM office shall be notified and a temperature survey utilizing an electronic type temperature survey with surface log readout will be used or a cement bond log shall be run to verify the top of the cement. Temperature survey will be run a minimum of six hours after pumping cement and ideally between 8-10 hours after

- completing the cement job.
- b. Wait on cement (WOC) time for a primary cement job will be a minimum of **8 hours** or 500 pounds compressive strength, whichever is greater. (This is to include the lead cement)
  - c. Wait on cement (WOC) time for a remedial job will be a minimum of 4 hours after bringing cement to surface or 500 pounds compressive strength, whichever is greater.
  - d. If cement falls back, remedial cementing will be done prior to drilling out that string.

**Intermediate casing must be kept fluid filled to meet BLM minimum collapse requirement.**

2. The minimum required fill of cement behind the 9-5/8 inch intermediate casing is:

**Option 1 (Single Stage):**

- Cement to surface. If cement does not circulate see B.1.a, c-d above.

**Option 2:**

Operator has proposed a DV tool, the depth may be adjusted as long as the cement is changed proportionally. The DV tool may be cancelled if cement circulates to surface on the first stage.

- a. First stage to DV tool: Cement to circulate. If cement does not circulate off the DV tool, contact the appropriate BLM office before proceeding with second stage cement job.
- b. Second stage above DV tool:
  - Cement to surface. If cement does not circulate, contact the appropriate BLM office.

**Operator has proposed to pump down 13-3/8" X 9-5/8" annulus. Operator must run a CBL from TD of the 9-5/8" casing to surface. Submit results to BLM.**

3. The minimum required fill of cement behind the 5-1/2 inch production casing is:
  - Cement should tie-back at least **200 feet** into previous casing string. Operator shall provide method of verification.  
**Cement excess is less than 25%, more cement might be required.**

### **C. PRESSURE CONTROL**

1. Variance approved to use flex line from BOP to choke manifold. Manufacturer's specification to be readily available. No external damage to flex line. Flex line to be installed as straight as possible (no hard bends).'
- 2.

#### **Option 1:**

- a. Minimum working pressure of the blowout preventer (BOP) and related equipment (BOPE) required for drilling below the surface casing shoe shall be **2000 (2M)** psi.
- b. Minimum working pressure of the blowout preventer (BOP) and related equipment (BOPE) required for drilling below the intermediate casing shoe shall be **3000 (3M)** psi.

#### **Option 2:**

1. Operator has proposed a multi-bowl wellhead assembly. This assembly will only be tested when installed on the surface casing. Minimum working pressure of the blowout preventer (BOP) and related equipment (BOPE) required for drilling below the surface casing shoe shall be **3000 (3M)** psi.
  - a. Wellhead shall be installed by manufacturer's representatives, submit documentation with subsequent sundry.
  - b. If the welding is performed by a third party, the manufacturer's representative shall monitor the temperature to verify that it does not exceed the maximum temperature of the seal.
  - c. Manufacturer representative shall install the test plug for the initial BOP test.
  - d. If the cement does not circulate and one inch operations would have been possible with a standard wellhead, the well head shall be cut off, cementing operations performed and another wellhead installed.
  - e. Whenever any seal subject to test pressure is broken, all the tests in OOGO2.III.A.2.i must be followed.

### **D. SPECIAL REQUIREMENT (S)**

#### **Communitization Agreement**

- The operator will submit a Communitization Agreement to the Carlsbad Field Office, 620 E Greene St. Carlsbad, New Mexico 88220, at least 90 days before the anticipated date of first production from a well subject to a spacing order issued by the New Mexico Oil Conservation Division. The Communitization Agreement will include the signatures of all working interest owners in all Federal and Indian leases subject to the Communitization Agreement (i.e., operating rights owners and lessees

of record), or certification that the operator has obtained the written signatures of all such owners and will make those signatures available to the BLM immediately upon request.

- If the operator does not comply with this condition of approval, the BLM may take enforcement actions that include, but are not limited to, those specified in 43 CFR 3163.1.
- In addition, the well sign shall include the surface and bottom hole lease numbers. When the Communitization Agreement number is known, it shall also be on the sign.

## GENERAL REQUIREMENTS

The BLM is to be notified in advance for a representative to witness:

- a. Spudding well (minimum of 24 hours)
- b. Setting and/or Cementing of all casing strings (minimum of 4 hours)
- c. BOPE tests (minimum of 4 hours)

☒ Eddy County

Call the Carlsbad Field Office, 620 East Greene St., Carlsbad, NM 88220,  
(575) 361-2822

☒ Lea County

Call the Hobbs Field Station, 414 West Taylor, Hobbs NM 88240, (575)  
393-3612

1. Unless the production casing has been run and cemented or the well has been properly plugged, the drilling rig shall not be removed from over the hole without prior approval.
  - a. In the event the operator has proposed to drill multiple wells utilizing a skid/walking rig. Operator shall secure the wellbore on the current well, after installing and testing the wellhead, by installing a blind flange of like pressure rating to the wellhead and a pressure gauge that can be monitored while drilling is performed on the other well(s).
  - b. When the operator proposes to set surface casing with Spudder Rig
    - Notify the BLM when moving in and removing the Spudder Rig.
    - Notify the BLM when moving in the 2<sup>nd</sup> Rig. Rig to be moved in within 90 days of notification that Spudder Rig has left the location.
    - BOP/BOPE test to be conducted per Onshore Oil and Gas Order No. 2 as soon as 2nd Rig is rigged up on well.
2. Floor controls are required for 3M or Greater systems. These controls will be on the rig floor, unobstructed, readily accessible to the driller and will be operational at all times during drilling and/or completion activities. Rig floor is defined as the area immediately around the rotary table; the area immediately above the substructure on which the draw works are located, this does not include the dog house or stairway area.
3. The record of the drilling rate along with the GR/N well log run from TD to surface (horizontal well – vertical portion of hole) shall be submitted to the BLM office as well as all other logs run on the borehole 30 days from completion. If available, a digital copy of the logs is to be submitted in addition to the paper copies. The Rustler top and top and bottom of Salt are to be recorded on the Completion Report.

A. CASING

1. Changes to the approved APD casing program need prior approval if the items substituted are of lesser grade or different casing size or are Non-API. The Operator can exchange the components of the proposal with that of superior strength (i.e. changing from J-55 to N-80, or from 36# to 40#). Changes to the approved cement program need prior approval if the altered cement plan has less volume or strength or if the changes are substantial (i.e. Multistage tool, ECP, etc.). The initial wellhead installed on the well will remain on the well with spools used as needed.
2. Wait on cement (WOC) for Potash Areas: After cementing but before commencing any tests, the casing string shall stand cemented under pressure until both of the following conditions have been met: 1) cement reaches a minimum compressive strength of 500 psi for all cement blends, 2) until cement has been in place at least 24 hours. WOC time will be recorded in the driller's log. The casing integrity test can be done (prior to the cement setting up) immediately after bumping the plug.
3. Wait on cement (WOC) for Water Basin: After cementing but before commencing any tests, the casing string shall stand cemented under pressure until both of the following conditions have been met: 1) cement reaches a minimum compressive strength of 500 psi at the shoe, 2) until cement has been in place at least 8 hours. WOC time will be recorded in the driller's log. See individual casing strings for details regarding lead cement slurry requirements. The casing integrity test can be done (prior to the cement setting up) immediately after bumping the plug.
4. Provide compressive strengths including hours to reach required 500 pounds compressive strength prior to cementing each casing string. Have well specific cement details onsite prior to pumping the cement for each casing string.
5. No pea gravel permitted for remedial or fall back remedial without prior authorization from the BLM engineer.
6. On that portion of any well approved for a 5M BOPE system or greater, a pressure integrity test of each casing shoe shall be performed. Formation at the shoe shall be tested to a minimum of the mud weight equivalent anticipated to control the formation pressure to the next casing depth or at total depth of the well. This test shall be performed before drilling more than 20 feet of new hole.
7. If hardband drill pipe is rotated inside casing, returns will be monitored for metal. If metal is found in samples, drill pipe will be pulled and rubber protectors which have a larger diameter than the tool joints of the drill pipe will be installed prior to continuing drilling operations.
8. Whenever a casing string is cemented in the R-111-P potash area, the NMOCD requirements shall be followed.

B. PRESSURE CONTROL

1. All blowout preventer (BOP) and related equipment (BOPE) shall comply with well control requirements as described in Onshore Oil and Gas Order No. 2 and API RP 53 Sec. 17.
2. If a variance is approved for a flexible hose to be installed from the BOP to the choke manifold, the following requirements apply: The flex line must meet the requirements of API 16C. Check condition of flexible line from BOP to choke manifold, replace if exterior is damaged or if line fails test. Line to be as straight as possible with no hard bends and is to be anchored according to Manufacturer's requirements. The flexible hose can be exchanged with a hose of equal size and equal or greater pressure rating. Anchor requirements, specification sheet and hydrostatic pressure test certification matching the hose in service, to be onsite for review. These documents shall be posted in the company man's trailer and on the rig floor.
3. 5M or higher system requires an HCR valve, remote kill line and annular to match. The remote kill line is to be installed prior to testing the system and tested to stack pressure.
4. If the operator has proposed a multi-bowl wellhead assembly in the APD. The following requirements must be met:
  - a. Wellhead shall be installed by manufacturer's representatives, submit documentation with subsequent sundry.
  - b. If the welding is performed by a third party, the manufacturer's representative shall monitor the temperature to verify that it does not exceed the maximum temperature of the seal.
  - c. Manufacturer representative shall install the test plug for the initial BOP test.
  - d. Whenever any seal subject to test pressure is broken, all the tests in OOGO2.III.A.2.i must be followed.
  - e. If the cement does not circulate and one inch operations would have been possible with a standard wellhead, the well head shall be cut off, cementing operations performed and another wellhead installed.
5. The appropriate BLM office shall be notified a minimum of 4 hours in advance for a representative to witness the tests.
  - a. In a water basin, for all casing strings utilizing slips, these are to be set as soon as the crew and rig are ready and any fallback cement remediation has been done. The casing cut-off and BOP installation can be initiated four hours after installing the slips, which will be approximately six hours after bumping the plug. For those casing strings not using slips, the minimum wait time before cut-off is eight hours after bumping the plug. BOP/BOPE testing can begin after cut-off or once cement reaches 500 psi compressive strength (including lead when specified), whichever is greater. However, if the float does not



hold, cut-off cannot be initiated until cement reaches 500 psi compressive strength (including lead when specified).

- b. In potash areas, for all casing strings utilizing slips, these are to be set as soon as the crew and rig are ready and any fallback cement remediation has been done. For all casing strings, casing cut-off and BOP installation can be initiated at twelve hours after bumping the plug. However, **no tests** shall commence until the cement has had a minimum of 24 hours setup time, except the casing pressure test can be initiated immediately after bumping the plug (only applies to single stage cement jobs).
- c. The tests shall be done by an independent service company utilizing a test plug not a cup or J-packer. The operator also has the option of utilizing an independent tester to test without a plug (i.e. against the casing) pursuant to Onshore Order 2 with the pressure not to exceed 70% of the burst rating for the casing. Any test against the casing must meet the WOC time for water basin (8 hours) or potash (24 hours) or 500 pounds compressive strength, whichever is greater, prior to initiating the test (see casing segment as lead cement may be critical item).
- d. The test shall be run on a 5000 psi chart for a 2-3M BOP/BOP, on a 10000 psi chart for a 5M BOP/BOPE and on a 15000 psi chart for a 10M BOP/BOPE. If a linear chart is used, it shall be a one hour chart. A circular chart shall have a maximum 2 hour clock. If a twelve hour or twenty-four hour chart is used, tester shall make a notation that it is run with a two hour clock.
- e. The results of the test shall be reported to the appropriate BLM office.
- f. All tests are required to be recorded on a calibrated test chart. A copy of the BOP/BOPE test chart and a copy of independent service company test will be submitted to the appropriate BLM office.
- g. The BOP/BOPE test shall include a low pressure test from 250 to 300 psi. The test will be held for a minimum of 10 minutes if test is done with a test plug and 30 minutes without a test plug. This test shall be performed prior to the test at full stack pressure.
- h. BOP/BOPE must be tested by an independent service company within 500 feet of the top of the Wolfcamp formation if the time between the setting of the intermediate casing and reaching this depth exceeds 20 days. This test does not exclude the test prior to drilling out the casing shoe as per Onshore Order No. 2.

C. DRILLING MUD

Mud system monitoring equipment, with derrick floor indicators and visual and audio alarms, shall be operating before drilling into the Wolfcamp formation, and shall be used until production casing is run and cemented.

**D. WASTE MATERIAL AND FLUIDS**

All waste (i.e. drilling fluids, trash, salts, chemicals, sewage, gray water, etc.) created as a result of drilling operations and completion operations shall be safely contained and disposed of properly at a waste disposal facility. No waste material or fluid shall be disposed of on the well location or surrounding area.

Porto-johns and trash containers will be on-location during fracturing operations or any other crew-intensive operations.



U.S. Department of the Interior  
BUREAU OF LAND MANAGEMENT

## Operator Certification Data Report

01/30/2020

### Operator Certification

*I hereby certify that I, or someone under my direct supervision, have inspected the drill site and access route proposed herein; that I am familiar with the conditions which currently exist; that I have full knowledge of state and Federal laws applicable to this operation; that the statements made in this APD package are, to the best of my knowledge, true and correct; and that the work associated with the operations proposed herein will be performed in conformity with this APD package and the terms and conditions under which it is approved. I also certify that I, or the company I represent, am responsible for the operations conducted under this application. These statements are subject to the provisions of 18 U.S.C. 1001 for the filing of false statements.*

**NAME:** Jenny Harms

**Signed on:** 03/14/2019

**Title:** Regulatory Compliance Professional

**Street Address:** 333 West Sheridan Avenue

**City:** Oklahoma City

**State:** OK

**Zip:** 73102

**Phone:** (405)552-6560

**Email address:** jennifer.harms@dvn.com

### Field Representative

**Representative Name:**

**Street Address:** 333 WEST SHERIDAN AVE

**City:** OKLAHOMA CITY

**State:** OK

**Zip:** 73102

**Phone:** (575)748-1871

**Email address:** ray.vaz@dvn.com



U.S. Department of the Interior  
BUREAU OF LAND MANAGEMENT

## Application Data Report

01/30/2020

APD ID: 10400039997

Submission Date: 03/18/2019

Operator Name: DEVON ENERGY PRODUCTION COMPANY LP

Well Name: BOUNDARY RAIDER 6-7 FED COM

Well Number: 521H

Well Type: OIL WELL

Well Work Type: Drill

[Show Final Text](#)

### Section 1 - General

APD ID: 10400039997

Tie to previous NOS?

Submission Date: 03/18/2019

BLM Office: CARLSBAD

User: Jenny Harms

Title: Regulatory Compliance  
Professional

Federal/Indian APD: FED

Is the first lease penetrated for production Federal or Indian? FED

Lease number: NMNM063994

Lease Acres: 980.63

Surface access agreement in place?

Allotted?

Reservation:

Agreement in place? YES

Federal or Indian agreement: FEDERAL

Agreement number: NMNM138276

Agreement name:

Keep application confidential? YES

Permitting Agent? NO

APD Operator: DEVON ENERGY PRODUCTION COMPANY LP

Operator letter of designation:

### Operator Info

Operator Organization Name: DEVON ENERGY PRODUCTION COMPANY LP

Operator Address: 333 West Sheridan Avenue

Zip: 73102

Operator PO Box:

Operator City: Oklahoma City State: OK

Operator Phone: (800)583-3866

Operator Internet Address:

### Section 2 - Well Information

Well in Master Development Plan? EXISTING

Master Development Plan name: Todd-Apache MDP 1

Well in Master SUPO? NO

Master SUPO name:

Well in Master Drilling Plan? NO

Master Drilling Plan name:

Well Name: BOUNDARY RAIDER 6-7 FED COM

Well Number: 521H

Well API Number:

Field/Pool or Exploratory? Field and Pool

Field Name: SAND DUNES

Pool Name: BONE SPRING

Is the proposed well in an area containing other mineral resources? NATURAL GAS,OIL,POTASH

**Operator Name:** DEVON ENERGY PRODUCTION COMPANY LP

**Well Name:** BOUNDARY RAIDER 6-7 FED COM

**Well Number:** 521H

**Is the proposed well in an area containing other mineral resources?** NATURAL GAS,OIL,POTASH

**Is the proposed well in a Helium production area?** N **Use Existing Well Pad?** NO **New surface disturbance?**

**Type of Well Pad:** MULTIPLE WELL

**Multiple Well Pad Name:** TODD-Number: 1

**Well Class:** HORIZONTAL

**APACHE 6-6 WELL PAD**

**Number of Legs:**

**Well Work Type:** Drill

**Well Type:** OIL WELL

**Describe Well Type:**

**Well sub-Type:** INFILL

**Describe sub-type:**

**Distance to town:**

**Distance to nearest well:** 86 FT

**Distance to lease line:** 535 FT

**Reservoir well spacing assigned acres Measurement:** 320 Acres

**Well plat:** Boundary\_Raider\_6\_7\_Fed\_Com\_521H\_signed\_C102\_20190314142902.pdf

**Well work start Date:** 03/14/2020

**Duration:** 45 DAYS

### Section 3 - Well Location Table

**Survey Type:** RECTANGULAR

**Describe Survey Type:**

**Datum:** NAD83

**Vertical Datum:** NAVD88

**Survey number:** 6850A

**Reference Datum:**

Wellbore	NS-Foot	NS Indicator	EW-Foot	EW Indicator	Twsp	Range	Section	Aliquot/Lot/Tract	Latitude	Longitude	County	State	Meridian	Lease Type	Lease Number	Elevation	MD	TVD	Will this well produce from this lease?
SHL Leg #1	535	FNL	650	FW L	23S	32E	6	Lot 4	32.33924 64	- 103.7208 515	LEA	NEW MEXI CO	NEW MEXI CO	F	NMNM 063994	350 4	0	0	
KOP Leg #1	200	FNL	104 0	FW L	23S	32E	6	Lot 4	32.34016 1	- 103.7195 83	LEA	NEW MEXI CO	NEW MEXI CO	F	NMNM 063994	- 510 3	864 6	860 7	
PPP Leg #1-1	100	FNL	104 0	FW L	23S	32E	6	Lot 4	32.34044 6	- 103.7195 891	LEA	NEW MEXI CO	NEW MEXI CO	F	NMNM 063994	- 510 3	864 6	860 7	

**Operator Name:** DEVON ENERGY PRODUCTION COMPANY LP

**Well Name:** BOUNDARY RAIDER 6-7 FED COM

**Well Number:** 521H

Wellbore	NS-Foot	NS Indicator	EW-Foot	EW Indicator	Twsp	Range	Section	Aliquot/Lot/Tract	Latitude	Longitude	County	State	Meridian	Lease Type	Lease Number	Elevation	MD	TVD	Will this well produce from this lease?
PPP Leg #1-2	0	FNL	104 0	FW L	23S	32E	7	Lot 1	32.32606 9	- 103.7195 88	LEA	NEW MEXI CO	NEW MEXI CO	F	NMNM 062223	- 567 6	141 00	918 0	
EXIT Leg #1	100	FSL	104 0	FW L	23S	32E	7	Lot 4	32.31198 38	- 103.7195 939	LEA	NEW MEXI CO	NEW MEXI CO	F	NMNM 086151	- 510 3	192 24	860 7	
BHL Leg #1	20	FSL	104 0	FW L	23S	32E	7	Lot 4	32.31176 4	- 103.7195 94	LEA	NEW MEXI CO	NEW MEXI CO	F	NMNM 086151	- 649 1	193 04	999 5	



U.S. Department of the Interior  
BUREAU OF LAND MANAGEMENT

## Drilling Plan Data Report

01/30/2020

APD ID: 10400039997

Submission Date: 03/18/2019

Operator Name: DEVON ENERGY PRODUCTION COMPANY LP

Well Name: BOUNDARY RAIDER 6-7 FED COM

Well Number: 521H

Well Type: OIL WELL

Well Work Type: Drill

[Show Final Text](#)

### Section 1 - Geologic Formations

Formation ID	Formation Name	Elevation	True Vertical Depth	Measured Depth	Lithologies	Mineral Resources	Producing Formation
418253	UNKNOWN	3504	0	0	ALLUVIUM	NONE	N
418255	RUSTLER	2704	800	800	SALT	NONE	N
418259	SALADO	2279	1225	1225	SALT	NONE	N
418256	BASE OF SALT	-821	4325	4325	SANDSTONE	NONE	N
418257	DELAWARE	-1046	4550	4550	SANDSTONE	NATURAL GAS, OIL	N
418254	BONE SPRING	-4921	8425	8425	SANDSTONE	NATURAL GAS, OIL	Y

### Section 2 - Blowout Prevention

Pressure Rating (PSI): 5M

Rating Depth: 6000

**Equipment:** BOP/BOPE will be installed per Onshore Oil & Gas Order #2 requirements prior to drilling below surface casing, a BOP/BOPE system with the above minimum rating will be installed on the wellhead system. BOP/BOPE will be tested by an independent service company per Onshore Oil & Gas Order #2 requirements and MASP (Maximum Anticipated Surface Pressure) calculations. If the system is upgraded, all the components installed will be functional and tested.

**Requesting Variance?** YES

**Variance request:** A variance is requested for the use of a flexible choke line from the BOP stack to the choke manifold. See attached for specs for hydrostatic test chart.

**Testing Procedure:** A multibowl wellhead may be used. The BOP will be tested per Onshore Order #2 after installation on the surface casing which will cover testing requirements for a maximum of 30 days. If any seal subject to test pressure is broken the system must be tested.

**Choke Diagram Attachment:**

5M\_BOPE\_\_CK\_20190314130707.pdf

**BOP Diagram Attachment:**

5M\_BOPE\_\_CK\_20190314130714.pdf

**Operator Name:** DEVON ENERGY PRODUCTION COMPANY LP

**Well Name:** BOUNDARY RAIDER 6-7 FED COM

**Well Number:** 521H

**Pressure Rating (PSI):** 5M

**Rating Depth:** 9180

**Equipment:** BOP/BOPE will be installed per Onshore Oil & Gas Order #2 requirements prior to drilling below intermediate casing, a BOP/BOPE system with the above minimum rating will be installed on the wellhead system. BOP/BOPE will be tested by an independent service company per Onshore Oil & Gas Order #2 requirements and MASP (Maximum Anticipated Surface Pressure) calculations. If the system is upgraded, all the components installed will be functional and tested.

**Requesting Variance?** YES

**Variance request:** A variance is requested for the use of a flexible choke line from the BOP stack to the choke manifold. See attached for specs for hydrostatic test chart.

**Testing Procedure:** A multibowl wellhead may be used. The BOP will be tested per Onshore Order #2 after installation on the surface casing which will cover testing requirements for a maximum of 30 days. If any seal subject to test pressure is broken the system must be tested.

**Choke Diagram Attachment:**

5M\_BOPE\_CK\_20190314130806.pdf

**BOP Diagram Attachment:**

5M\_BOPE\_CK\_20190314130812.pdf

### Section 3 - Casing

Casing ID	String Type	Hole Size	Csg Size	Condition	Standard	Tapered String	Top Set MD	Bottom Set MD	Top Set TVD	Bottom Set TVD	Top Set MSL	Bottom Set MSL	Calculated casing length MD	Grade	Weight	Joint Type	Collapse SF	Burst SF	Joint SF Type	Joint SF	Body SF Type	Body SF
1	SURFACE	17.5	13.375	NEW	API	N	0	825	0	825	-6887	-7703	825	H-40	48	OTHER - BTC	1.125	1	BUOY	1.6	BUOY	1.6
2	INTERMEDIATE	12.25	9.625	NEW	API	N	0	6000	0	6000	-6887	-12887	6000	J-55	40	OTHER - BTC	1.125	1	BUOY	1.6	BUOY	1.6
3	PRODUCTION	8.75	5.5	NEW	API	N	0	19304	0	9180	-6887	-17250	19304	P-110	17	OTHER - BTC	1.125	1	BUOY	1.6	BUOY	1.6

**Casing Attachments**



**Operator Name:** DEVON ENERGY PRODUCTION COMPANY LP

**Well Name:** BOUNDARY RAIDER 6-7 FED COM

**Well Number:** 521H

#### Casing Attachments

---

**Casing ID:** 1      **String Type:** SURFACE

**Inspection Document:**

**Spec Document:**

**Tapered String Spec:**

**Casing Design Assumptions and Worksheet(s):**

Surf\_Csg\_Ass\_20190314180408.pdf

---

**Casing ID:** 2      **String Type:** INTERMEDIATE

**Inspection Document:**

**Spec Document:**

**Tapered String Spec:**

**Casing Design Assumptions and Worksheet(s):**

Int\_Csg\_Ass\_20190314180430.pdf

---

**Casing ID:** 3      **String Type:** PRODUCTION

**Inspection Document:**

**Spec Document:**

**Tapered String Spec:**

**Casing Design Assumptions and Worksheet(s):**

Prod\_Csg\_Ass\_20190314180438.pdf

---

#### Section 4 - Cement

**Operator Name:** DEVON ENERGY PRODUCTION COMPANY LP

**Well Name:** BOUNDARY RAIDER 6-7 FED COM

**Well Number:** 521H

String Type	Lead/Tail	Stage Tool Depth	Top MD	Bottom MD	Quantity(sx)	Yield	Density	Cu Ft	Excess%	Cement type	Additives
SURFACE	Lead		0	825	635	1.44	13.2	915	50	c	Class C + adds

INTERMEDIATE	Lead		0	5500	677	3.27	9	2214	30	c	Class C + adds
INTERMEDIATE	Tail		5500	6000	153.8	1.44	13.2	221.5	30	c	Class C + adds
PRODUCTION	Lead		5500	8646	268	3.27	9	878	10	tuned	Class C + adds
PRODUCTION	Tail		8646	19304	2056	1.44	13.2	2961.4	10	h	(50:50) Clas H Cement: Poz (Fly Ash) + 0.5% bwoc HALAD-344 + 0.4% bwoc CFR-3 + 0.2% BWOC HR-601 + 2% bwoc Bentonite

### Section 5 - Circulating Medium

**Mud System Type:** Closed

**Will an air or gas system be Used?** NO

**Description of the equipment for the circulating system in accordance with Onshore Order #2:**

**Diagram of the equipment for the circulating system in accordance with Onshore Order #2:**

**Describe what will be on location to control well or mitigate other conditions:** Sufficient mud materials to maintain mud properties and meet minimum lost circulation and weight increase requirements will be kept on location at all times.

**Describe the mud monitoring system utilized:** PVT/Pason/Visual Monitoring

### Circulating Medium Table

Top Depth	Bottom Depth	Mud Type	Min Weight (lbs/gal)	Max Weight (lbs/gal)	Density (lbs/cu ft)	Gel Strength (lbs/100 sqft)	PH	Viscosity (CP)	Salinity (ppm)	Filtration (cc)	Additional Characteristics
6000	9995	WATER-BASED MUD	8.5	9							

**Operator Name:** DEVON ENERGY PRODUCTION COMPANY LP

**Well Name:** BOUNDARY RAIDER 6-7 FED COM

**Well Number:** 521H

Top Depth	Bottom Depth	Mud Type	Min Weight (lbs/gal)	Max Weight (lbs/gal)	Density (lbs/cu ft)	Gel Strength (lbs/100 sqft)	PH	Viscosity (CP)	Salinity (ppm)	Filtration (cc)	Additional Characteristics
0	9995	WATER-BASED MUD	8.5	9				2			
825	9995	SALT SATURATED	10	10.5							

### Section 6 - Test, Logging, Coring

**List of production tests including testing procedures, equipment and safety measures:**

Will run GRMWD from TD to from KOP. Cement bond logs will be run in vertical to determine top of cement. Stated logs run will be in the Completion Report and submitted to the BLM.

**List of open and cased hole logs run in the well:**

CALIPER,CBL,DS,GR,MUDLOG

**Coring operation description for the well:**

na

### Section 7 - Pressure

**Anticipated Bottom Hole Pressure:** 4296

**Anticipated Surface Pressure:** 2097.1

**Anticipated Bottom Hole Temperature(F):** 129

**Anticipated abnormal pressures, temperatures, or potential geologic hazards?** NO

**Describe:**

**Contingency Plans geohazards description:**

**Contingency Plans geohazards attachment:**

**Hydrogen Sulfide drilling operations plan required?** YES

**Hydrogen sulfide drilling operations plan:**

Boundry\_Raider\_6\_7\_Fed\_Com\_521H\_H2S\_PLAN\_20190314180939.pdf

**Operator Name:** DEVON ENERGY PRODUCTION COMPANY LP

**Well Name:** BOUNDARY RAIDER 6-7 FED COM

**Well Number:** 521H

## Section 8 - Other Information

### **Proposed horizontal/directional/multi-lateral plan submission:**

Boundary\_Raider\_6\_7\_Fed\_Com\_521H\_\_Permit\_Plan\_1\_20190314181114.pdf

Devon\_Boundary\_Raider\_6\_7\_Fed\_Com\_521H\_AC\_Report\_Permit\_Plan\_1\_20190314181114.pdf

Devon\_Boundary\_Raider\_6\_7\_Fed\_Com\_521H\_Permit\_Plan\_1\_20190314181115.pdf

Devon\_Boundary\_Raider\_6\_7\_Fed\_Com\_521H\_Plot\_Permit\_Plan\_1\_20190314181116.pdf

### **Other proposed operations facets description:**

Multi-Bowl Verbiage

Multi-Bowl Wellhead

Closed Loop Design

Co-Flex

GCP Plan

Spudder Rig

Drilling plan

### **Other proposed operations facets attachment:**

MB\_Verb\_5M\_20190314132649.pdf

MB\_Wellhd\_5M\_20190314132650.pdf

Spudder\_Rig\_Info\_20190314132650.pdf

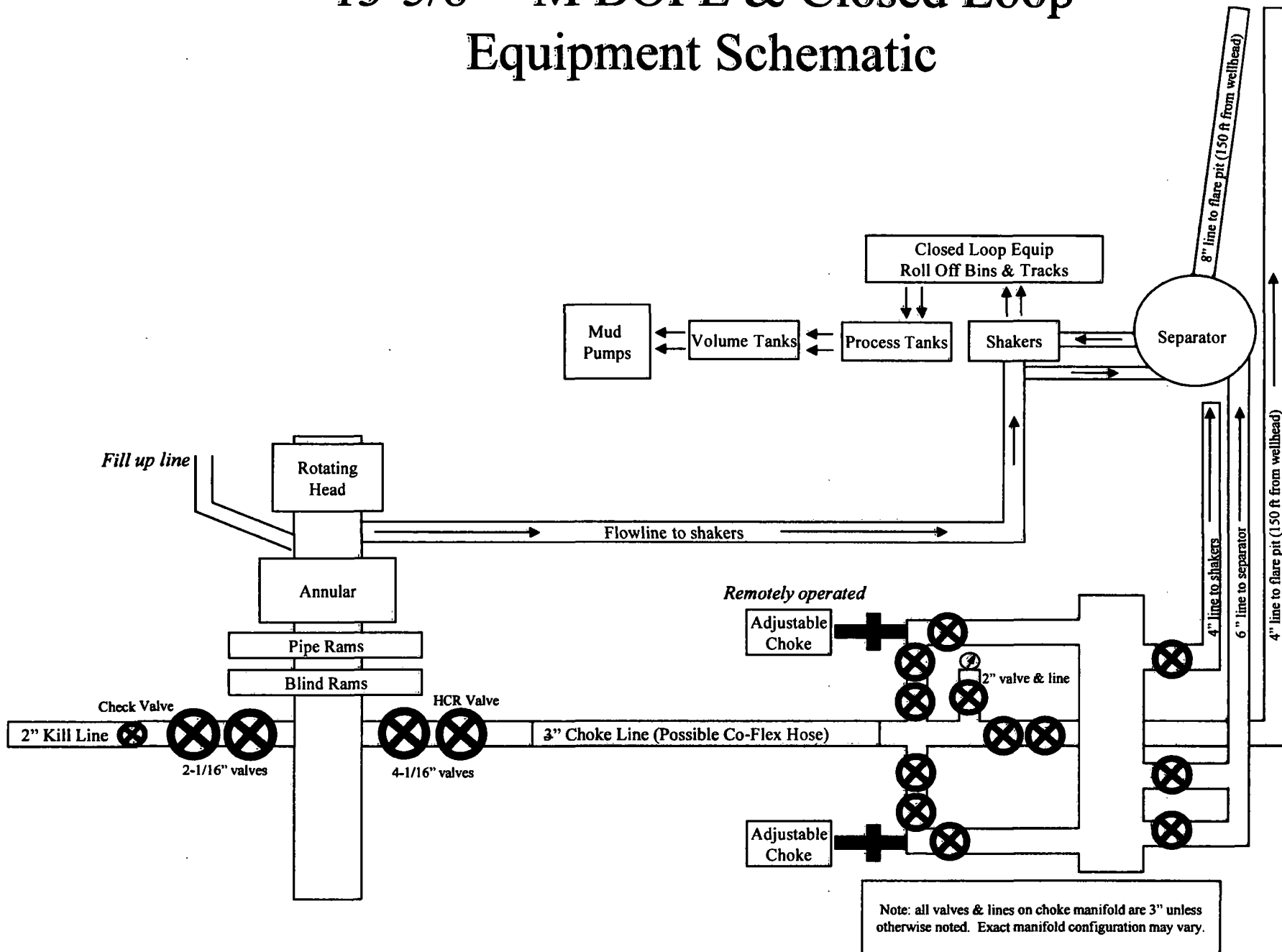
GasCapturePlan\_BOUNDARY\_RAIDER\_6\_CTB\_2\_20190314132739.pdf

Clsd\_Loop\_20190314132649.pdf

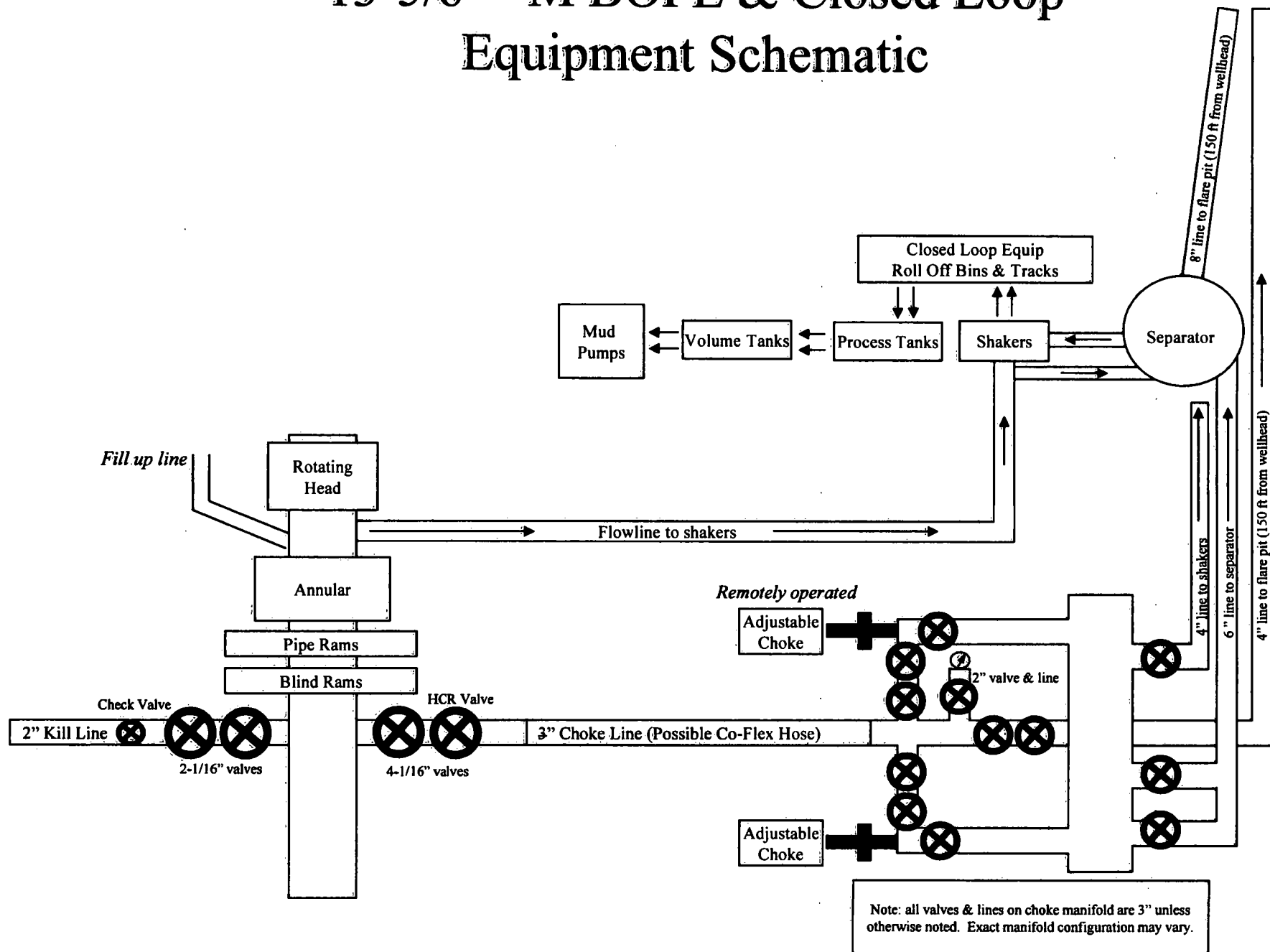
### **Other Variance attachment:**

Co\_flex\_20190314132801.pdf

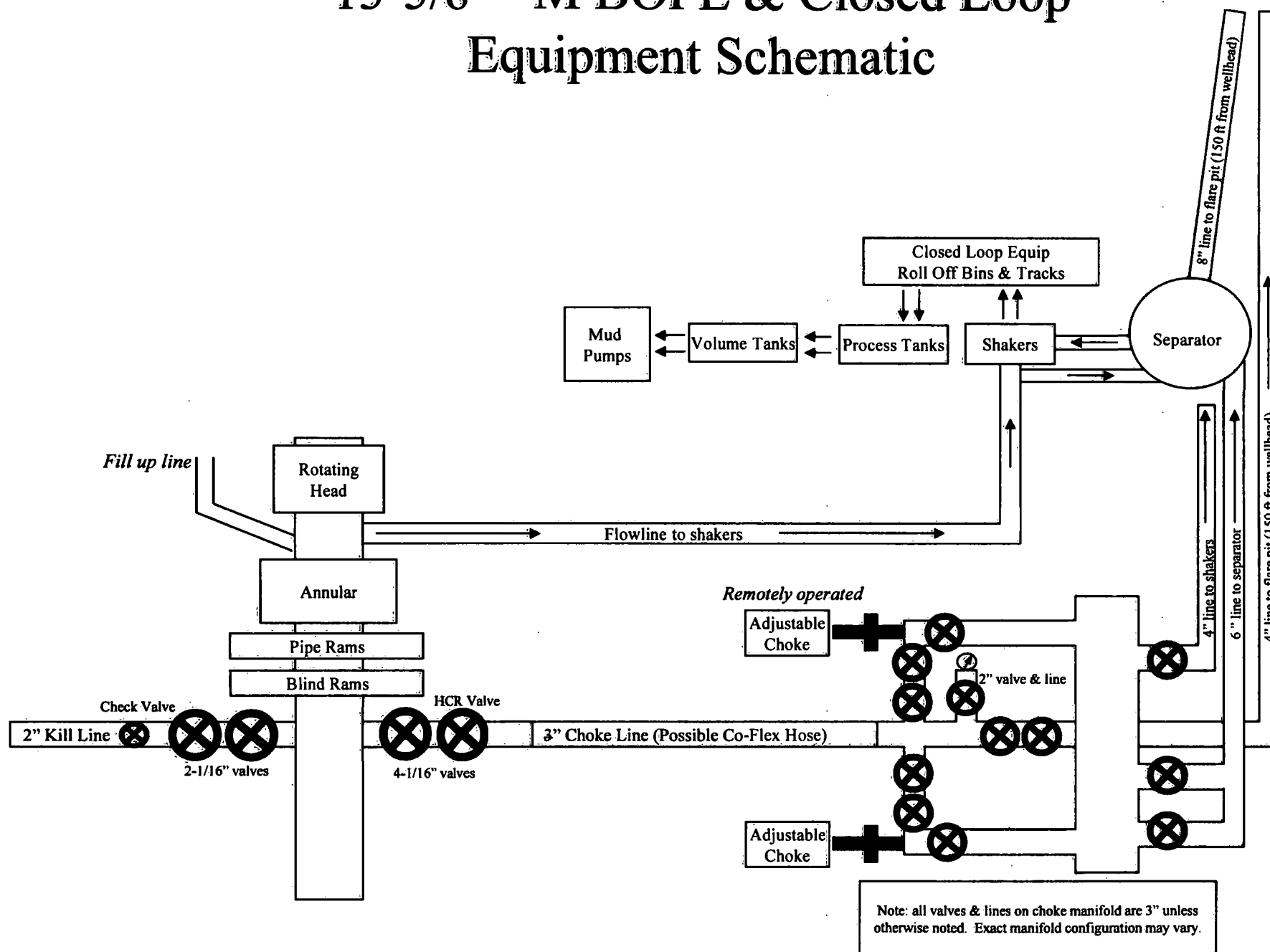
# 13-5/8" M BOPE & Closed Loop Equipment Schematic



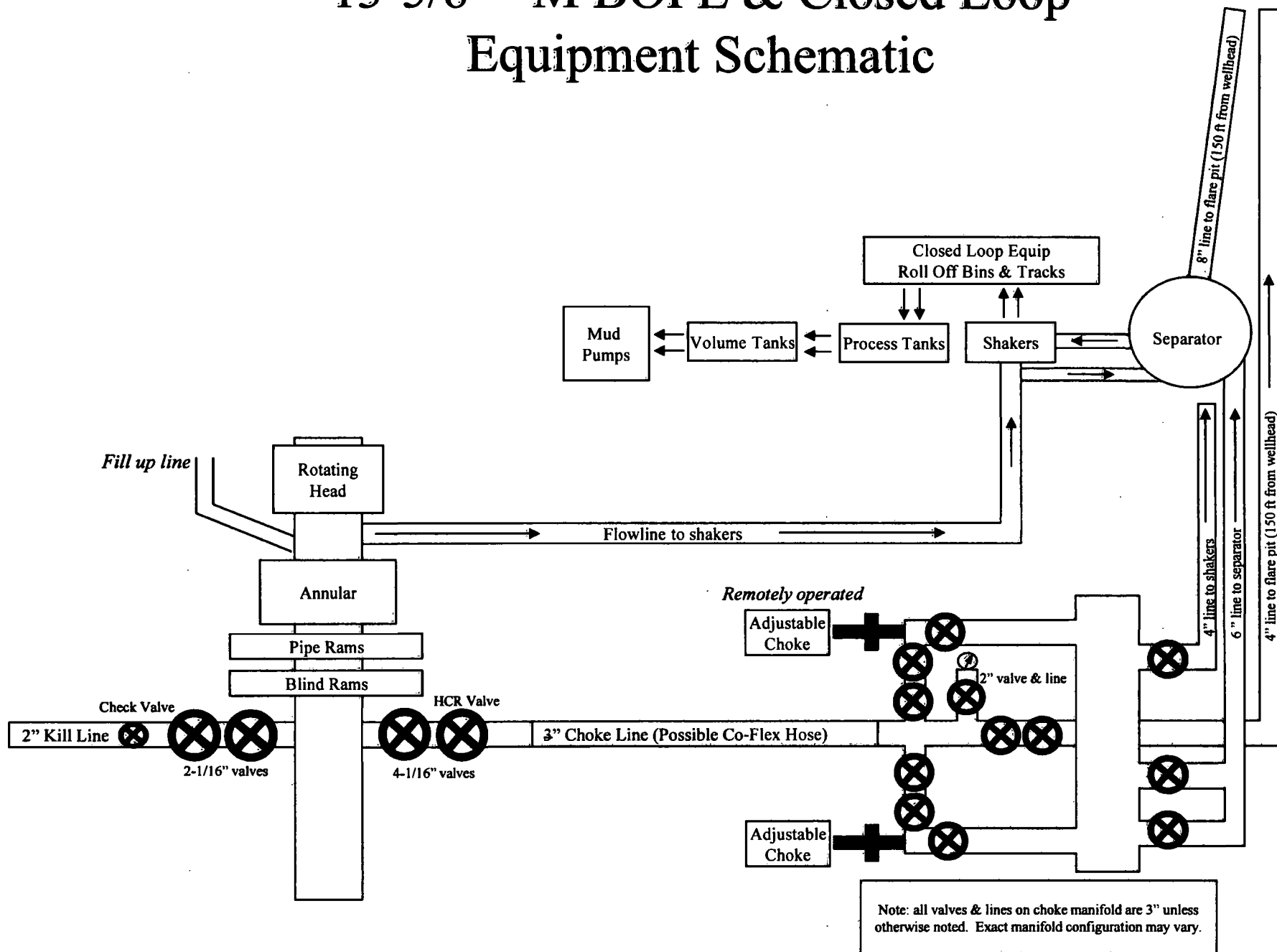
# 13-5/8" M BOPE & Closed Loop Equipment Schematic



# 13-5/8" M BOPE & Closed Loop Equipment Schematic



# 13-5/8" M BOPE & Closed Loop Equipment Schematic





## Casing Assumptions and Load Cases

### Intermediate

All casing design assumptions were ran in Stress Check to determine safety factor which meet or exceed both Devon Energy and BLM minimum requirements. All casing strings will be filled while running in hole in order to not exceed collapse rating of the pipe.

Intermediate Casing Burst Design		
Load Case	External Pressure	Internal Pressure
Pressure Test	Formation Pore Pressure	Max mud weight of next hole-section plus Test psi
Drill Ahead	Formation Pore Pressure	Max mud weight of next hole section
Fracture @ Shoe	Formation Pore Pressure	Dry gas

Intermediate Casing Collapse Design		
Load Case	External Pressure	Internal Pressure
Full Evacuation	Water gradient in cement, mud above TOC	None
Cementing	Wet cement weight	Water (8.33ppg)

Intermediate Casing Tension Design	
Load Case	Assumptions
Overpull	100kips
Runing in hole	2 ft/s
Service Loads	N/A

## Casing Assumptions and Load Cases

### Production

All casing design assumptions were ran in Stress Check to determine safety factor which meet or exceed both Devon Energy and BLM minimum requirements. All casing strings will be filled while running in hole in order to not exceed collapse rating of the pipe.

Production Casing Burst Design		
Load Case	External Pressure	Internal Pressure
Pressure Test	Formation Pore Pressure	Fluid in hole (water or produced water) + test psi
Tubing Leak	Formation Pore Pressure	Packer @ KOP, leak below surface 8.6 ppg packer fluid
Stimulation	Formation Pore Pressure	Max frac pressure with heaviest frac fluid

Production Casing Collapse Design		
Load Case	External Pressure	Internal Pressure
Full Evacuation	Water gradient in cement, mud above TOC.	None
Cementing	Wet cement weight	Water (8.33ppg)

Production Casing Tension Design	
Load Case	Assumptions
Overpull	100kips
Runing in hole	2 ft/s
Service Loads	N/A

## Casing Assumptions and Load Cases

### Surface

All casing design assumptions were ran in Stress Check to determine safety factor which meet or exceed both Devon Energy and BLM minimum requirements. All casing strings will be filled while running in hole in order to not exceed collapse rating of the pipe.

Surface Casing Burst Design		
Load Case	External Pressure	Internal Pressure
Pressure Test	Formation Pore Pressure	Max mud weight of next hole-section plus Test psi
Drill Ahead	Formation Pore Pressure	Max mud weight of next hole section
Displace to Gas	Formation Pore Pressure	Dry gas from next casing point

Surface Casing Collapse Design		
Load Case	External Pressure	Internal Pressure
Full Evacuation	Water gradient in cement, mud above TOC	None
Cementing	Wet cement weight	Water (8.33ppg)

Surface Casing Tension Design	
Load Case	Assumptions
Overpull	100kips
Runing in hole	3 ft/s
Service Loads	N/A



**Devon Energy Center  
333 West Sheridan Avenue  
Oklahoma City, Oklahoma 73102-5015**

# **Hydrogen Sulfide (H<sub>2</sub>S) Contingency Plan**

**For**

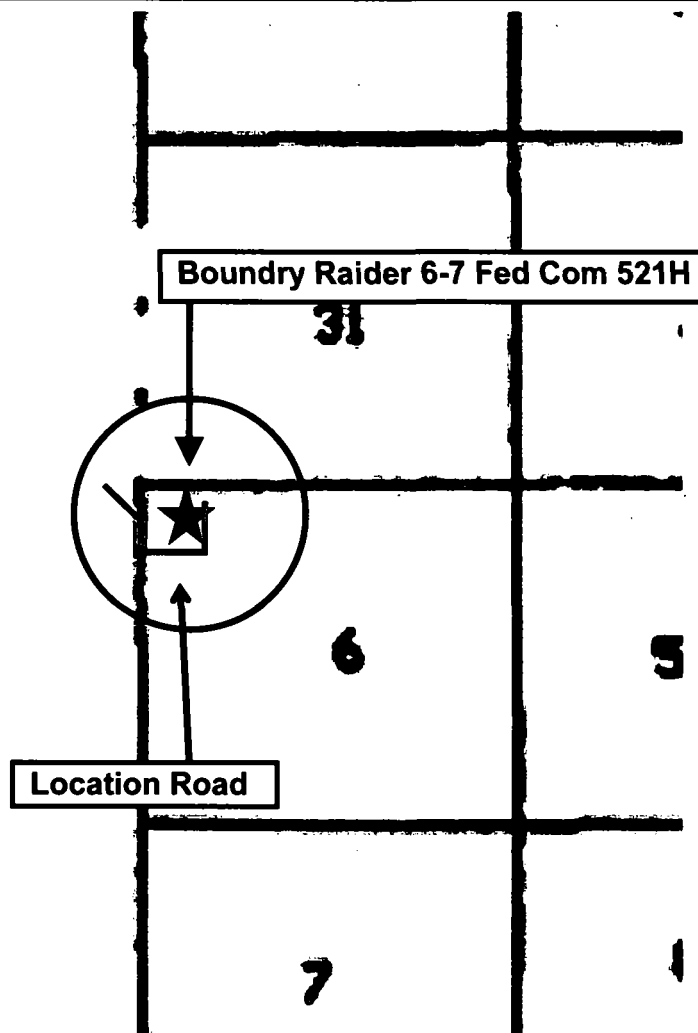
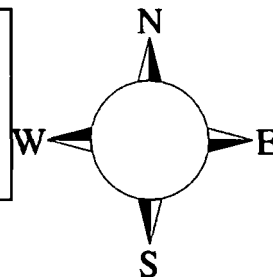
**Boundry Raider 6-7 Fed Com 521H**

**Sec-6 T-23S R-32E  
535' FNL & 650' FWL  
LAT. = 32.3392464' N (NAD83)  
LONG = 103.7208515' W**

**Lea County NM**

## Boundry Raider 6-7 Fed Com 521H

This is an open drilling site. H<sub>2</sub>S monitoring equipment and emergency response equipment will be used within 500' of zones known to contain H<sub>2</sub>S, including warning signs, wind indicators and H<sub>2</sub>S monitor.



**Assumed 100 ppm ROE = 3000' (Radius of Exposure)**  
**100 ppm H<sub>2</sub>S concentration shall trigger activation of this plan.**

### Escape

Crews shall escape upwind of escaping gas in the event of an emergency release of gas. Escape can be facilitated from the location entrance road. Crews should then block the entrance to the location from the lease road so as not to allow anyone traversing into a hazardous area. The blockade should be at a safe distance outside of the ROE. There are no homes or buildings in or near the ROE.

**Assumed 100 ppm ROE = 3000'**

**100 ppm H<sub>2</sub>S concentration shall trigger activation of this plan.**

### **Emergency Procedures**

**In the event of a release of gas containing H<sub>2</sub>S, the first responder(s) must**

- **Isolate the area and prevent entry by other persons into the 100 ppm ROE.**
- **Evacuate any public places encompassed by the 100 ppm ROE.**
- **Be equipped with H<sub>2</sub>S monitors and air packs in order to control the release.**
- **Use the "buddy system" to ensure no injuries occur during the response**
- **Take precautions to avoid personal injury during this operation.**
- **Contact operator and/or local officials to aid in operation. See list of phone numbers attached.**
- **Have received training in the**
  - **Detection of H<sub>2</sub>S, and**
  - **Measures for protection against the gas,**
  - **Equipment used for protection and emergency response.**

### **Ignition of Gas Source**

Should control of the well be considered lost and ignition considered, take care to protect against exposure to Sulfur Dioxide (SO<sub>2</sub>). Intentional ignition must be coordinated with the NMOCD and local officials. Additionally the NM State Police may become involved. NM State Police shall be the Incident Command on scene of any major release. Take care to protect downwind whenever there is an ignition of the gas

### **Characteristics of H<sub>2</sub>S and SO<sub>2</sub>**

<b>Common Name</b>	<b>Chemical Formula</b>	<b>Specific Gravity</b>	<b>Threshold Limit</b>	<b>Hazardous Limit</b>	<b>Lethal Concentration</b>
<b>Hydrogen Sulfide</b>	<b>H<sub>2</sub>S</b>	<b>1.189 Air = 1</b>	<b>10 ppm</b>	<b>100 ppm/hr</b>	<b>600 ppm</b>
<b>Sulfur Dioxide</b>	<b>SO<sub>2</sub></b>	<b>2.21 Air = 1</b>	<b>2 ppm</b>	<b>N/A</b>	<b>1000 ppm</b>

### **Contacting Authorities**

Devon Energy Corp. personnel must liaison with local and state agencies to ensure a proper response to a major release. Additionally, the OCD must be notified of the release as soon as possible but no later than 4 hours. Agencies will ask for information such as type and volume of release, wind direction, location of release, etc. Be prepared with all information available. The following call list of essential and potential responders has been prepared for use during a release. Devon Energy Corp. Company response must be in coordination with the State of New Mexico's 'Hazardous Materials Emergency Response Plan' (HMER)

## **Hydrogen Sulfide Drilling Operation Plan**

### **I. HYDROGEN SULFIDE (H<sub>2</sub>S) TRAINING**

All personnel, whether regularly assigned, contracted, or employed on an unscheduled basis, will receive training from a qualified instructor in the following areas prior to commencing drilling operations on this well:

1. The hazards and characteristics of hydrogen sulfide (H<sub>2</sub>S)
2. The proper use and maintenance of personal protective equipment and life support systems.
3. The proper use of H<sub>2</sub>S detectors, alarms, warning systems, briefing areas, evacuation procedures, and prevailing winds.
4. The proper techniques for first aid and rescue procedures.

In addition, supervisory personnel will be trained in the following areas:

1. The effects of H<sub>2</sub>S metal components. If high tensile tubulars are to be used, personnel will be trained in their special maintenance requirements.
2. Corrective action and shut-in procedures when drilling or reworking a well and blowout prevention and well control procedures.
3. The contents and requirements of the H<sub>2</sub>S Drilling Operations Plan and Public Protection Plan.

There will be an initial training session just prior to encountering a known or probable H<sub>2</sub>S zone (within 3 days or 500 feet) and weekly H<sub>2</sub>S and well control drills for all personnel in each crew. The initial training session shall include a review of the site specific H<sub>2</sub>S Drilling Operations Plan and the Public Protection Plan.

### **II. HYDROGEN SULFIDE TRAINING**

Note: All H<sub>2</sub>S safety equipment and systems will be installed, tested, and operational when drilling reaches a depth of 500 feet above, or three days prior to penetrating the first zone containing or reasonably expected to contain H<sub>2</sub>S.

## **1. Well Control Equipment**

- A. Flare line
- B. Choke manifold – Remotely Operated
- C. Blind rams and pipe rams to accommodate all pipe sizes with properly sized closing unit
- D. Auxiliary equipment may include if applicable: annular preventer and rotating head.
- E. Mud/Gas Separator

## **2. Protective equipment for essential personnel:**

30-minute SCBA units located at briefing areas, as indicated on well site diagram, with escape units available in the top doghouse. As it may be difficult to communicate audibly while wearing these units, hand signals shall be utilized.

## **3. H<sub>2</sub>S detection and monitoring equipment:**

Portable H<sub>2</sub>S monitors positioned on location for best coverage and response. These units have warning lights which activate when H<sub>2</sub>S levels reach 10 ppm and audible sirens which activate at 15 ppm. Sensor locations:

- Bell nipple
- Possum Belly/Shale shaker
- Rig floor
- Choke manifold
- Cellar

### **Visual warning systems:**

- A. Wind direction indicators as shown on well site diagram
- B. Caution/ Danger signs shall be posted on roads providing direct access to locations. Signs will be painted a high visibility yellow with black lettering of sufficient size to be reasonable distance from the immediate location. Bilingual signs will be used when appropriate.



**4. Mud program:**

The mud program has been designed to minimize the volume of H<sub>2</sub>S circulated to surface. Proper mud weight, safe drilling practices and the use of H<sub>2</sub>S scavengers will minimize hazards when penetrating H<sub>2</sub>S bearing zones.

**5. Metallurgy:**

- A. All drill strings, casings, tubing, wellhead, blowout preventer, drilling spool, kill lines, choke manifold lines, and valves shall be H<sub>2</sub>S trim.
- B. All elastomers used for packing and seals shall be H<sub>2</sub>S trim.

**6. Communication:**

- A. Company personnel have/use cellular telephones in the field.
- B. Land line (telephone) communications at Office

**7. Well testing:**

- A. Drill stem testing will be performed with a minimum number of personnel in the immediate vicinity, which are necessary to safety and adequately conduct the test. The drill stem testing will be conducted during daylight hours and formation fluids will not be flowed to the surface. All drill-stem-testing operations conducted in an H<sub>2</sub>S environment will use the closed chamber method of testing.
- B. There will be no drill stem testing.

<b><u>Devon Energy Corp. Company Call List</u></b>		
Drilling Supervisor – Basin – Mark Kramer		405-823-4796
EHS Professional – Laura Wright		405-439-8129
<b><u>Agency Call List</u></b>		
<b><u>Lea County (575)</u></b>	<b>Hobbs</b>	
	Lea County Communication Authority	393-3981
	State Police	392-5588
	City Police	397-9265
	Sheriff's Office	393-2515
	<b>Ambulance</b>	<b>911</b>
	Fire Department	397-9308
	LEPC (Local Emergency Planning Committee)	393-2870
	NMOCD	393-6161
	US Bureau of Land Management	393-3612
<b><u>Eddy County (575)</u></b>	<b>Carlsbad</b>	
	State Police	885-3137
	City Police	885-2111
	Sheriff's Office	887-7551
	<b>Ambulance</b>	<b>911</b>
	Fire Department	885-3125
	LEPC (Local Emergency Planning Committee)	887-3798
	US Bureau of Land Management	887-6544
	NM Emergency Response Commission (Santa Fe)	(505) 476-9600
	24 HR	(505) 827-9126
	National Emergency Response Center	(800) 424-8802
	National Pollution Control Center: Direct	(703) 872-6000
	For Oil Spills	(800) 280-7118
	<b>Emergency Services</b>	
	Wild Well Control	(281) 784-4700
	Cudd Pressure Control	(915) 699-0139 (915) 563-3356
	Halliburton	(575) 746-2757
	B. J. Services	(575) 746-3569
<b><u>Give GPS position:</u></b>	Native Air – Emergency Helicopter – Hobbs	(575) 392-6429
	Flight For Life - Lubbock, TX	(806) 743-9911
	Aerocare - Lubbock, TX	(806) 747-8923
	Med Flight Air Amb - Albuquerque, NM	(575) 842-4433
	Lifeguard Air Med Svc. Albuquerque, NM	(800) 222-1222
	Poison Control (24/7)	(575) 272-3115
	Oil & Gas Pipeline 24 Hour Service	(800) 364-4366
	NOAA – Website - <a href="http://www.nhc.noaa.gov">www.nhc.noaa.gov</a>	

Prepared in conjunction with  
Dave Small



**Boundary Raider 6-7 Fed Com 521H**

## 1. Geologic Formations

TVD of target	9180	Pilot hole depth	N/A
MD at TD:	19304	Deepest expected fresh water	

## Basin

[illegible]

\*H<sub>2</sub>S, water flows, loss of circulation, abnormal pressures, etc.

# Boundary Raider 6-7 Fed Com 521H

## 2. Casing Program

Hole Size	Casing Interval		Csg. Size	Wt (PPF)	Grade	Conn	Min SF Collapse	Min SF Burst	Min SF Tension
	From	To							
17 1/2	0	825 TVD	13 3/8	48.0	H40	BTC	1.125	1.25	1.6
12 1/4	0	6000 TVD	9 5/8	40.0	J-55	BTC	1.125	1.25	1.6
8 3/4	0	TD	5 1/2	17.0	P110	BTC	1.125	1.25	1.6
BLM Minimum Safety Factor							1.125	1	1.6 Dry 1.8 Wet

- All casing strings will be tested in accordance with Onshore Oil and Gas Order #2 IILB.1.h Must have table for contingency casing.
- Rustler top will be validated via drilling parameters (i.e. reduction in ROP) and surface casing setting depth revised accordingly if needed.
- A variance is requested for collapse rating on intermediate casing. Operator will keep pipe full while running casing.
- Int casing shoe will be selected based on drilling data, gamma, and flows experienced while drilling. Setting depth will be revised accordingly if needed.
- A variance is requested to waive the centralizer requirement for the Intermediate casing and production casing.

## Boundary Raider 6-7 Fed Com 521H

	Y or N
Is casing new? If used, attach certification as required in Onshore Order #1	Y
Does casing meet API specifications? If no, attach casing specification sheet.	Y
Is premium or uncommon casing planned? If yes attach casing specification sheet.	N
Does the above casing design meet or exceed BLM's minimum standards? If not provide justification (loading assumptions, casing design criteria).	Y
Will the intermediate pipe be kept at a minimum 1/3 fluid filled to avoid approaching the collapse pressure rating of the casing?	Y
Is well located within Capitan Reef?	N
If yes, does production casing cement tie back a minimum of 50' above the Reef?	
Is well within the designated 4 string boundary.	
Is well located in SOPA but not in R-111-P?	N
If yes, are the first 2 strings cemented to surface and 3 <sup>rd</sup> string cement tied back 500' into previous casing?	
Is well located in R-111-P and SOPA?	N
If yes, are the first three strings cemented to surface?	
Is 2 <sup>nd</sup> string set 100' to 600' below the base of salt?	
Is well located in high Cave/Karst?	N
If yes, are there two strings cemented to surface?	
(For 2 string wells) If yes, is there a contingency casing if lost circulation occurs?	
Is well located in critical Cave/Karst?	N
If yes, are there three strings cemented to surface?	

**3. Cementing Program (3-String Primary Design)**

Casing	# Sk	TOC	Wt. (lb/gal)	Yld (ft <sup>3</sup> /sack)	Slurry Description
Surface	636	Surf	13.2	1.4	Lead: Class C Cement + additives
Int	677	Surf	9.0	3.3	Lead: Class C Cement + additives
	154	500' above shoe	13.2	1.4	Tail: Class H / C + additives
Int 1 Two Stage w/ DV @ TVD of Delaware	138	Surf	9.0	3.3	1st stage Lead: Class C Cement + additives
	136	500' above shoe	13.2	1.4	1st stage Tail: Class H / C + additives
	481	Surf	9.0	3.3	2nd stage Lead: Class C Cement + additives
	136	500' above DV	13.2	1.4	2nd stage Tail: Class H / C + additives
Int 1 Intermediate Squeeze	As Needed	Surf	9.0	3.3	Squeeze Lead: Class C Cement + additives
	677	Surf	9.0	3.3	Lead: Class C Cement + additives
	154	500' above shoe	13.2	1.4	Tail: Class H / C + additives
Production	269	500' tieback	9.0	3.3	Lead: Class H / C + additives
	2057	KOP	13.2	1.4	Tail: Class H / C + additives

If a DV tool is ran the depth(s) will be adjusted based on hole conditions and cement volumes will be adjusted proportionally. Slurry weights will be adjusted based on estimated fracture gradient of the formation. DV tool will be set a minimum of 50 feet below previous casing and a minimum of 200 feet above current shoe. If cement is not returned to surface during the primary cement job on the surface casing string, a planned top job will be conducted immediately after completion of the primary job.

Casing String	% Excess
Surface	50%
Intermediate	30%
Production	10%

## Boundary Raider 6-7 Fed Com 521H

## 4. Pressure Control Equipment (Three String Design)

BOP installed and tested before drilling which hole?	Size?	Min. Required WP	Type	✓	Tested to:
Int 1	13-58"	5M	Annular	X	50% of rated working pressure
			Blind Ram	X	5M
			Pipe Ram		
			Double Ram	X	
			Other*		
Production	13-5/8"	5M	Annular	X	50% of rated working pressure
			Blind Ram	X	5M
			Pipe Ram		
			Double Ram	X	
			Other*		
			Annular (5M)		
			Blind Ram		
			Pipe Ram		
			Double Ram		
			Other*		

**5. Mud Program (Three String Design)**

Section	Type	Weight (ppg)
Surface	FW Gel	8.5-9
Intermediate	Brine	10-10.5
Production	WBM	8.5-9

Sufficient mud materials to maintain mud properties and meet minimum lost circulation and weight increase requirements will be kept on location at all times.

What will be used to monitor the loss or gain of fluid?	PVT/Pason/Visual Monitoring
---	-----------------------------

**6. Logging and Testing Procedures**

<b>Logging, Coring and Testing</b>	
X	Will run GR/CNL from TD to surface (horizontal well - vertical portion of hole). Stated logs run will be in the Completion Report and submitted to the BLM.
	No logs are planned based on well control or offset log information.
	Drill stem test? If yes, explain.
	Coring? If yes, explain.

<b>Additional logs planned</b>		<b>Interval</b>
	Resistivity	
	Density	
X	CBL	Production casing
X	Mud log	KOP to TD
	PEX	

**7. Drilling Conditions**

<b>Condition</b>	<b>Specify what type and where?</b>
BH pressure at deepest TVD	4296
Abnormal temperature	No

Mitigation measure for abnormal conditions. Describe. Lost circulation material/sweeps/mud scavengers.

Hydrogren Sulfide (H2S) monitors will be installed prior to drilling out the surface shoe. If H2S is detected in concentrations greater than 100 ppm, the operator will comply with the provisions of Onshore Oil and Gas Order #6. If Hydrogen Sulfide is encountered measured values and formations will be provided to the BLM.	
N	H2S is present
Y	H2S plan attached.



## 8. Other facets of operation

Is this a walking operation? Potentially

- 1 If operator elects, drilling rig will batch drill the surface holes and run/cement surface casing; walking the rig to next wells on the pad.
- 2 The drilling rig will then batch drill the intermediate sections and run/cement intermediate casing; the wellbore will be isolated with a blind flange and pressure gauge installed for monitoring the well before walking to the next well.
- 3 The drilling rig will then batch drill the production hole sections on the wells with OBM, run/cement production casing, and install TA caps or tubing heads for completions.

NOTE: During batch operations the drilling rig will be moved from well to well however, it will not be removed from the pad until all wells have production casing run/cemented.

Will be pre-setting casing? Potentially

- 1 Spudder rig will move in and batch drill surface hole.
  - a. Rig will utilize fresh water based mud to drill surface hole to TD. Solids control will be handled entirely on a closed loop basis.
- 2 After drilling the surface hole section, the spudder rig will run casing and cement following all of the applicable rules and regulations (OnShore Order 2, all COAs and NMOCD regulations).
- 3 The wellhead will be installed and tested once the surface casing is cut off and the WOC time has been reached.
- 4 A blind flange with the same pressure rating as the wellhead will be installed to seal the wellbore. Pressure will be monitored with a pressure gauge installed on the wellhead.
- 5 Spudder rig operations is expected to take 4-5 days per well on a multi-well pad.
- 6 The NMOCD will be contacted and notified 24 hours prior to commencing spudder rig operations.
- 7 Drilling operations will be performed with drilling rig. At that time an approved BOP stack will be nipped up and tested on the wellhead before drilling operations commences on each well.
  - a. The NMOCD will be contacted / notified 24 hours before the drilling rig moves back on to the pad with the pre-set surface casing.

### Attachments

X Directional Plan  
           Other, describe

# **WCDSC Permian NM**

**Eddy County (NAD 83 NM Eastern)**

**Sec 06-T23S-R32E**

**Boundary Raider 6-7 Fed Com 521H**

**Wellbore #1**

**Plan: Permit Plan 1**

## **Standard Planning Report - Geographic**

**06 March, 2019**

# Planning Report - Geographic

<b>Database:</b>	EDM r5000.141_Prod US	<b>Local Co-ordinate Reference:</b>	Well Boundary Raider 6-7 Fed Com 521H
<b>Company:</b>	WCDSC Permian NM	<b>TVD Reference:</b>	RKB @ 3531.20ft
<b>Project:</b>	Eddy County (NAD 83 NM Eastern)	<b>MD Reference:</b>	RKB @ 3531.20ft
<b>Site:</b>	Sec 06-T23S-R32E	<b>North Reference:</b>	Grid
<b>Well:</b>	Boundary Raider 6-7 Fed Com 521H	<b>Survey Calculation Method:</b>	Minimum Curvature
<b>Wellbore:</b>	Wellbore #1		
<b>Design:</b>	Permit Plan 1		

<b>Project</b>	Eddy County (NAD 83 NM Eastern)		
<b>Map System:</b>	US State Plane 1983	<b>System Datum:</b>	Mean Sea Level
<b>Geo Datum:</b>	North American Datum 1983		
<b>Map Zone:</b>	New Mexico Eastern Zone		

<b>Site</b>	Sec 06-T23S-R32E
-------------	------------------

<b>Site Position:</b>		<b>Northing:</b>	488,219.63 usft	<b>Latitude:</b>	32.340711
<b>From:</b>	Map	<b>Easting:</b>	729,845.81 usft	<b>Longitude:</b>	-103.722956
<b>Position Uncertainty:</b>	0.00 ft	<b>Slot Radius:</b>	13-3/16 "	<b>Grid Convergence:</b>	0.33 °

<b>Well</b>	Boundary Raider 6-7 Fed Com 521H				
<b>Well Position</b>	<b>+N/-S</b>	0.00 ft	<b>Northing:</b>	487,690.72 usft	<b>Latitude:</b> 32.339247
	<b>+E/-W</b>	0.00 ft	<b>Easting:</b>	730,498.73 usft	<b>Longitude:</b> -103.720852
<b>Position Uncertainty</b>		0.50 ft	<b>Wellhead Elevation:</b>		<b>Ground Level:</b> 3,504.40 ft

<b>Wellbore</b>	Wellbore #1
-----------------	-------------

<b>Magnetics</b>	<b>Model Name</b>	<b>Sample Date</b>	<b>Declination (°)</b>	<b>Dip Angle (°)</b>	<b>Field Strength (nT)</b>
	IGRF2015	12/14/2018	6.87	60.13	47,836.53852423

<b>Design</b>	Permit Plan 1
---------------	---------------

Audit Notes:				
Version:	Phase:	PROTOTYPE	Tie On Depth:	0.00
Vertical Section:	Depth From (TVD) (ft)	+N/-S (ft)	+E/-W (ft)	Direction (°)
	0.00	0.00	0.00	177.45

Plan Survey Tool Program			Date	3/6/2019	
Depth From (ft)	Depth To (ft)	Survey (Wellbore)	Tool Name	Remarks	
1	0.00	19,304.18 Permit Plan 1 (Wellbore #1)	MWD+HDGM		
			OWSG MWD + HDGM		

<b>Plan Sections</b>										
<b>Measured Depth (ft)</b>	<b>Inclination (°)</b>	<b>Azimuth (°)</b>	<b>Vertical Depth (ft)</b>	<b>+N/-S (ft)</b>	<b>+E/-W (ft)</b>	<b>Dogleg Rate (°/100usft)</b>	<b>Build Rate (°/100usft)</b>	<b>Turn Rate (°/100usft)</b>	<b>TFO (°)</b>	<b>Target</b>
0.00	0.00	0.00	0.00	0.00	0.00	0.00	0.00	0.00	0.00	
4,500.00	0.00	0.00	4,500.00	0.00	0.00	0.00	0.00	0.00	0.00	
5,120.95	9.31	49.34	5,118.22	32.82	38.20	1.50	1.50	0.00	49.34	
7,675.19	9.31	49.34	7,638.78	302.18	351.80	0.00	0.00	0.00	0.00	
8,296.14	0.00	0.00	8,257.00	335.00	390.00	1.50	-1.50	0.00	180.00	
8,646.18	0.00	0.00	8,607.04	335.00	390.00	0.00	0.00	0.00	0.00	
9,546.18	90.00	179.69	9,180.00	-237.95	393.09	10.00	10.00	0.00	179.69	PBHL - Boundary Rai
19,304.18	90.00	179.69	9,180.00	-9,995.81	445.65	0.00	0.00	0.00	0.00	PBHL - Boundary Rai

# Planning Report - Geographic

<b>Database:</b>	EDM r5000.141_Prod US	<b>Local Co-ordinate Reference:</b>	Well Boundary Raider 6-7 Fed Com 521H
<b>Company:</b>	WCDSC Permian NM	<b>TVD Reference:</b>	RKB @ 3531.20ft
<b>Project:</b>	Eddy County (NAD 83 NM Eastern)	<b>MD Reference:</b>	RKB @ 3531.20ft
<b>Site:</b>	Sec 06-T23S-R32E	<b>North Reference:</b>	Grid
<b>Well:</b>	Boundary Raider 6-7 Fed Com 521H	<b>Survey Calculation Method:</b>	Minimum Curvature
<b>Wellbore:</b>	Wellbore #1		
<b>Design:</b>	Permit Plan 1		

## Planned Survey

Measured Depth (ft)	Inclination (°)	Azimuth (°)	Vertical Depth (ft)	+N/-S (ft)	+E/-W (ft)	Map Northing (usft)	Map Easting (usft)	Latitude	Longitude
0.00	0.00	0.00	0.00	0.00	0.00	487,690.72	730,498.73	32.339247	-103.720852
100.00	0.00	0.00	100.00	0.00	0.00	487,690.72	730,498.73	32.339247	-103.720852
200.00	0.00	0.00	200.00	0.00	0.00	487,690.72	730,498.73	32.339247	-103.720852
300.00	0.00	0.00	300.00	0.00	0.00	487,690.72	730,498.73	32.339247	-103.720852
400.00	0.00	0.00	400.00	0.00	0.00	487,690.72	730,498.73	32.339247	-103.720852
500.00	0.00	0.00	500.00	0.00	0.00	487,690.72	730,498.73	32.339247	-103.720852
600.00	0.00	0.00	600.00	0.00	0.00	487,690.72	730,498.73	32.339247	-103.720852
700.00	0.00	0.00	700.00	0.00	0.00	487,690.72	730,498.73	32.339247	-103.720852
800.00	0.00	0.00	800.00	0.00	0.00	487,690.72	730,498.73	32.339247	-103.720852
900.00	0.00	0.00	900.00	0.00	0.00	487,690.72	730,498.73	32.339247	-103.720852
1,000.00	0.00	0.00	1,000.00	0.00	0.00	487,690.72	730,498.73	32.339247	-103.720852
1,100.00	0.00	0.00	1,100.00	0.00	0.00	487,690.72	730,498.73	32.339247	-103.720852
1,200.00	0.00	0.00	1,200.00	0.00	0.00	487,690.72	730,498.73	32.339247	-103.720852
1,300.00	0.00	0.00	1,300.00	0.00	0.00	487,690.72	730,498.73	32.339247	-103.720852
1,400.00	0.00	0.00	1,400.00	0.00	0.00	487,690.72	730,498.73	32.339247	-103.720852
1,500.00	0.00	0.00	1,500.00	0.00	0.00	487,690.72	730,498.73	32.339247	-103.720852
1,600.00	0.00	0.00	1,600.00	0.00	0.00	487,690.72	730,498.73	32.339247	-103.720852
1,700.00	0.00	0.00	1,700.00	0.00	0.00	487,690.72	730,498.73	32.339247	-103.720852
1,800.00	0.00	0.00	1,800.00	0.00	0.00	487,690.72	730,498.73	32.339247	-103.720852
1,900.00	0.00	0.00	1,900.00	0.00	0.00	487,690.72	730,498.73	32.339247	-103.720852
2,000.00	0.00	0.00	2,000.00	0.00	0.00	487,690.72	730,498.73	32.339247	-103.720852
2,100.00	0.00	0.00	2,100.00	0.00	0.00	487,690.72	730,498.73	32.339247	-103.720852
2,200.00	0.00	0.00	2,200.00	0.00	0.00	487,690.72	730,498.73	32.339247	-103.720852
2,300.00	0.00	0.00	2,300.00	0.00	0.00	487,690.72	730,498.73	32.339247	-103.720852
2,400.00	0.00	0.00	2,400.00	0.00	0.00	487,690.72	730,498.73	32.339247	-103.720852
2,500.00	0.00	0.00	2,500.00	0.00	0.00	487,690.72	730,498.73	32.339247	-103.720852
2,600.00	0.00	0.00	2,600.00	0.00	0.00	487,690.72	730,498.73	32.339247	-103.720852
2,700.00	0.00	0.00	2,700.00	0.00	0.00	487,690.72	730,498.73	32.339247	-103.720852
2,800.00	0.00	0.00	2,800.00	0.00	0.00	487,690.72	730,498.73	32.339247	-103.720852
2,900.00	0.00	0.00	2,900.00	0.00	0.00	487,690.72	730,498.73	32.339247	-103.720852
3,000.00	0.00	0.00	3,000.00	0.00	0.00	487,690.72	730,498.73	32.339247	-103.720852
3,100.00	0.00	0.00	3,100.00	0.00	0.00	487,690.72	730,498.73	32.339247	-103.720852
3,200.00	0.00	0.00	3,200.00	0.00	0.00	487,690.72	730,498.73	32.339247	-103.720852
3,300.00	0.00	0.00	3,300.00	0.00	0.00	487,690.72	730,498.73	32.339247	-103.720852
3,400.00	0.00	0.00	3,400.00	0.00	0.00	487,690.72	730,498.73	32.339247	-103.720852
3,500.00	0.00	0.00	3,500.00	0.00	0.00	487,690.72	730,498.73	32.339247	-103.720852
3,600.00	0.00	0.00	3,600.00	0.00	0.00	487,690.72	730,498.73	32.339247	-103.720852
3,700.00	0.00	0.00	3,700.00	0.00	0.00	487,690.72	730,498.73	32.339247	-103.720852
3,800.00	0.00	0.00	3,800.00	0.00	0.00	487,690.72	730,498.73	32.339247	-103.720852
3,900.00	0.00	0.00	3,900.00	0.00	0.00	487,690.72	730,498.73	32.339247	-103.720852
4,000.00	0.00	0.00	4,000.00	0.00	0.00	487,690.72	730,498.73	32.339247	-103.720852
4,100.00	0.00	0.00	4,100.00	0.00	0.00	487,690.72	730,498.73	32.339247	-103.720852
4,200.00	0.00	0.00	4,200.00	0.00	0.00	487,690.72	730,498.73	32.339247	-103.720852
4,300.00	0.00	0.00	4,300.00	0.00	0.00	487,690.72	730,498.73	32.339247	-103.720852
4,400.00	0.00	0.00	4,400.00	0.00	0.00	487,690.72	730,498.73	32.339247	-103.720852
4,500.00	0.00	0.00	4,500.00	0.00	0.00	487,690.72	730,498.73	32.339247	-103.720852
4,600.00	1.50	49.34	4,599.99	0.85	0.99	487,691.57	730,499.72	32.339249	-103.720848
4,700.00	3.00	49.34	4,699.91	3.41	3.97	487,694.13	730,502.70	32.339256	-103.720839
4,800.00	4.50	49.34	4,799.69	7.67	8.93	487,698.39	730,507.66	32.339267	-103.720823
4,900.00	6.00	49.34	4,899.27	13.63	15.87	487,704.36	730,514.60	32.339284	-103.720800
5,000.00	7.50	49.34	4,998.57	21.29	24.79	487,712.01	730,523.51	32.339305	-103.720771
5,100.00	9.00	49.34	5,097.54	30.64	35.67	487,721.36	730,534.40	32.339330	-103.720736
5,120.95	9.31	49.34	5,118.22	32.82	38.20	487,723.54	730,536.93	32.339336	-103.720727
5,200.00	9.31	49.34	5,196.23	41.15	47.91	487,731.87	730,546.63	32.339359	-103.720696
5,300.00	9.31	49.34	5,294.91	51.70	60.19	487,742.42	730,558.91	32.339388	-103.720656

# Planning Report - Geographic

<b>Database:</b>	EDM r5000.141_Prod US	<b>Local Co-ordinate Reference:</b>	Well Boundary Raider 6-7 Fed Com 521H
<b>Company:</b>	WCDSC Permian NM	<b>TVD Reference:</b>	RKB @ 3531.20ft
<b>Project:</b>	Eddy County (NAD 83 NM Eastern)	<b>MD Reference:</b>	RKB @ 3531.20ft
<b>Site:</b>	Sec 06-T23S-R32E	<b>North Reference:</b>	Grid
<b>Well:</b>	Boundary Raider 6-7 Fed Com 521H	<b>Survey Calculation Method:</b>	Minimum Curvature
<b>Wellbore:</b>	Wellbore #1		
<b>Design:</b>	Permit Plan 1		

Planned Survey									
Measured Depth (ft)	Inclination (°)	Azimuth (°)	Vertical Depth (ft)	+N/-S (ft)	+E/-W (ft)	Map Northing (usft)	Map Easting (usft)	Latitude	Longitude
5,400.00	9.31	49.34	5,393.59	62.24	72.46	487,752.96	730,571.19	32.339416	-103.720616
5,500.00	9.31	49.34	5,492.27	72.79	84.74	487,763.51	730,583.47	32.339445	-103.720576
5,600.00	9.31	49.34	5,590.95	83.34	97.02	487,774.06	730,595.74	32.339474	-103.720536
5,700.00	9.31	49.34	5,689.63	93.88	109.29	487,784.60	730,608.02	32.339503	-103.720496
5,800.00	9.31	49.34	5,788.32	104.43	121.57	487,795.15	730,620.30	32.339532	-103.720456
5,900.00	9.31	49.34	5,887.00	114.97	133.85	487,805.69	730,632.58	32.339560	-103.720416
6,000.00	9.31	49.34	5,985.68	125.52	146.13	487,816.24	730,644.85	32.339589	-103.720376
6,100.00	9.31	49.34	6,084.36	136.07	158.40	487,826.79	730,657.13	32.339618	-103.720336
6,200.00	9.31	49.34	6,183.04	146.61	170.68	487,837.33	730,669.41	32.339647	-103.720296
6,300.00	9.31	49.34	6,281.72	157.16	182.96	487,847.88	730,681.69	32.339676	-103.720256
6,400.00	9.31	49.34	6,380.40	167.70	195.24	487,858.42	730,693.96	32.339704	-103.720216
6,500.00	9.31	49.34	6,479.09	178.25	207.51	487,868.97	730,706.24	32.339733	-103.720177
6,600.00	9.31	49.34	6,577.77	188.80	219.79	487,879.52	730,718.52	32.339762	-103.720137
6,700.00	9.31	49.34	6,676.45	199.34	232.07	487,890.06	730,730.80	32.339791	-103.720097
6,800.00	9.31	49.34	6,775.13	209.89	244.35	487,900.61	730,743.07	32.339820	-103.720057
6,900.00	9.31	49.34	6,873.81	220.43	256.62	487,911.15	730,755.35	32.339848	-103.720017
7,000.00	9.31	49.34	6,972.49	230.98	268.90	487,921.70	730,767.63	32.339877	-103.719977
7,100.00	9.31	49.34	7,071.18	241.53	281.18	487,932.25	730,779.90	32.339906	-103.719937
7,200.00	9.31	49.34	7,169.86	252.07	293.46	487,942.79	730,792.18	32.339935	-103.719897
7,300.00	9.31	49.34	7,268.54	262.62	305.73	487,953.34	730,804.46	32.339964	-103.719857
7,400.00	9.31	49.34	7,367.22	273.16	318.01	487,963.88	730,816.74	32.339992	-103.719817
7,500.00	9.31	49.34	7,465.90	283.71	330.29	487,974.43	730,829.01	32.340021	-103.719777
7,600.00	9.31	49.34	7,564.58	294.26	342.57	487,984.98	730,841.29	32.340050	-103.719737
7,675.19	9.31	49.34	7,638.78	302.18	351.80	487,992.91	730,850.52	32.340072	-103.719707
7,700.00	8.94	49.34	7,663.28	304.75	354.78	487,995.47	730,853.51	32.340079	-103.719697
7,800.00	7.44	49.34	7,762.25	314.03	365.59	488,004.75	730,864.32	32.340104	-103.719662
7,900.00	5.94	49.34	7,861.57	321.63	374.43	488,012.35	730,873.16	32.340125	-103.719633
8,000.00	4.44	49.34	7,961.16	327.52	381.30	488,018.24	730,880.02	32.340141	-103.719611
8,100.00	2.94	49.34	8,060.95	331.72	386.18	488,022.44	730,884.91	32.340152	-103.719595
8,200.00	1.44	49.34	8,160.87	334.21	389.08	488,024.93	730,887.81	32.340159	-103.719586
8,296.14	0.00	0.00	8,257.00	335.00	390.00	488,025.72	730,888.73	32.340161	-103.719583
8,300.00	0.00	0.00	8,260.86	335.00	390.00	488,025.72	730,888.73	32.340161	-103.719583
8,400.00	0.00	0.00	8,360.86	335.00	390.00	488,025.72	730,888.73	32.340161	-103.719583
8,500.00	0.00	0.00	8,460.86	335.00	390.00	488,025.72	730,888.73	32.340161	-103.719583
8,600.00	0.00	0.00	8,560.86	335.00	390.00	488,025.72	730,888.73	32.340161	-103.719583
8,646.18	0.00	0.00	8,607.04	335.00	390.00	488,025.72	730,888.73	32.340161	-103.719583
<b>KOP &amp; FTP @ 8046' MD, 200' FNL, 1040' FWL</b>									
8,700.00	5.38	179.69	8,660.78	332.47	390.01	488,023.19	730,888.74	32.340154	-103.719583
8,800.00	15.38	179.69	8,759.02	314.48	390.11	488,005.20	730,888.84	32.340105	-103.719583
8,900.00	25.38	179.69	8,852.64	279.69	390.30	487,970.41	730,889.02	32.340009	-103.719583
9,000.00	35.38	179.69	8,938.80	229.18	390.57	487,919.90	730,889.30	32.339870	-103.719583
9,100.00	45.38	179.69	9,014.88	164.48	390.92	487,855.20	730,889.64	32.339692	-103.719583
9,200.00	55.38	179.69	9,078.56	87.54	391.33	487,778.27	730,890.06	32.339481	-103.719583
9,300.00	65.38	179.69	9,127.92	0.72	391.80	487,691.44	730,890.53	32.339242	-103.719583
9,400.00	75.38	179.69	9,161.45	-93.35	392.31	487,597.37	730,891.03	32.338984	-103.719583
9,500.00	85.38	179.69	9,178.14	-191.82	392.84	487,498.90	730,891.56	32.338713	-103.719583
9,546.18	90.00	179.69	9,180.00	-237.95	393.09	487,452.77	730,891.81	32.338586	-103.719583
9,600.00	90.00	179.69	9,180.00	-291.77	393.38	487,398.95	730,892.10	32.338438	-103.719583
9,700.00	90.00	179.69	9,180.00	-391.77	393.92	487,298.95	730,892.64	32.338163	-103.719584
9,800.00	90.00	179.69	9,180.00	-491.77	394.45	487,198.96	730,893.18	32.337889	-103.719584
9,900.00	90.00	179.69	9,180.00	-591.76	394.99	487,098.96	730,893.72	32.337614	-103.719584
10,000.00	90.00	179.69	9,180.00	-691.76	395.53	486,998.96	730,894.26	32.337339	-103.719584
10,100.00	90.00	179.69	9,180.00	-791.76	396.07	486,898.96	730,894.80	32.337064	-103.719584
10,200.00	90.00	179.69	9,180.00	-891.76	396.61	486,798.96	730,895.33	32.336789	-103.719584

# Planning Report - Geographic

<b>Database:</b>	EDM r5000.141_Prod US	<b>Local Co-ordinate Reference:</b>	Well Boundary Raider 6-7 Fed Com 521H
<b>Company:</b>	WCDSC Permian NM	<b>TVD Reference:</b>	RKB @ 3531.20ft
<b>Project:</b>	Eddy County (NAD 83 NM Eastern)	<b>MD Reference:</b>	RKB @ 3531.20ft
<b>Site:</b>	Sec 06-T23S-R32E	<b>North Reference:</b>	Grid
<b>Well:</b>	Boundary Raider 6-7 Fed Com 521H	<b>Survey Calculation Method:</b>	Minimum Curvature
<b>Wellbore:</b>	Wellbore #1		
<b>Design:</b>	Permit Plan 1		

## Planned Survey

Measured Depth (ft)	Inclination (°)	Azimuth (°)	Vertical Depth (ft)	+N/-S (ft)	+E/-W (ft)	Map Northing (usft)	Map Easting (usft)	Latitude	Longitude
10,300.00	90.00	179.69	9,180.00	-991.76	397.15	486,698.96	730,895.87	32.336514	-103.719584
10,400.00	90.00	179.69	9,180.00	-1,091.76	397.69	486,598.97	730,896.41	32.336239	-103.719584
10,500.00	90.00	179.69	9,180.00	-1,191.76	398.22	486,498.97	730,896.95	32.335964	-103.719584
10,600.00	90.00	179.69	9,180.00	-1,291.75	398.76	486,398.97	730,897.49	32.335690	-103.719585
10,700.00	90.00	179.69	9,180.00	-1,391.75	399.30	486,298.97	730,898.03	32.335415	-103.719585
10,800.00	90.00	179.69	9,180.00	-1,491.75	399.84	486,198.97	730,898.57	32.335140	-103.719585
10,900.00	90.00	179.69	9,180.00	-1,591.75	400.38	486,098.97	730,899.10	32.334865	-103.719585
11,000.00	90.00	179.69	9,180.00	-1,691.75	400.92	485,998.98	730,899.64	32.334590	-103.719585
11,100.00	90.00	179.69	9,180.00	-1,791.75	401.46	485,898.98	730,900.18	32.334315	-103.719585
11,200.00	90.00	179.69	9,180.00	-1,891.75	402.00	485,798.98	730,900.72	32.334040	-103.719585
11,300.00	90.00	179.69	9,180.00	-1,991.74	402.53	485,698.98	730,901.26	32.333765	-103.719585
11,400.00	90.00	179.69	9,180.00	-2,091.74	403.07	485,598.98	730,901.80	32.333491	-103.719585
11,500.00	90.00	179.69	9,180.00	-2,191.74	403.61	485,498.98	730,902.34	32.333216	-103.719586
11,600.00	90.00	179.69	9,180.00	-2,291.74	404.15	485,398.99	730,902.88	32.332941	-103.719586
11,700.00	90.00	179.69	9,180.00	-2,391.74	404.69	485,298.99	730,903.41	32.332666	-103.719586
11,800.00	90.00	179.69	9,180.00	-2,491.74	405.23	485,198.99	730,903.95	32.332391	-103.719586
11,900.00	90.00	179.69	9,180.00	-2,591.74	405.77	485,098.99	730,904.49	32.332116	-103.719586
12,000.00	90.00	179.69	9,180.00	-2,691.73	406.30	484,998.99	730,905.03	32.331841	-103.719586
12,100.00	90.00	179.69	9,180.00	-2,791.73	406.84	484,898.99	730,905.57	32.331567	-103.719586
12,200.00	90.00	179.69	9,180.00	-2,891.73	407.38	484,799.00	730,906.11	32.331292	-103.719586
12,300.00	90.00	179.69	9,180.00	-2,991.73	407.92	484,699.00	730,906.65	32.331017	-103.719586
12,400.00	90.00	179.69	9,180.00	-3,091.73	408.46	484,599.00	730,907.18	32.330742	-103.719587
12,500.00	90.00	179.69	9,180.00	-3,191.73	409.00	484,499.00	730,907.72	32.330467	-103.719587
12,600.00	90.00	179.69	9,180.00	-3,291.73	409.54	484,399.00	730,908.26	32.330192	-103.719587
12,700.00	90.00	179.69	9,180.00	-3,391.72	410.08	484,299.00	730,908.80	32.329917	-103.719587
12,800.00	90.00	179.69	9,180.00	-3,491.72	410.61	484,199.01	730,909.34	32.329642	-103.719587
12,900.00	90.00	179.69	9,180.00	-3,591.72	411.15	484,099.01	730,909.88	32.329368	-103.719587
13,000.00	90.00	179.69	9,180.00	-3,691.72	411.69	483,999.01	730,910.42	32.329093	-103.719587
13,100.00	90.00	179.69	9,180.00	-3,791.72	412.23	483,899.01	730,910.96	32.328818	-103.719587
13,200.00	90.00	179.69	9,180.00	-3,891.72	412.77	483,799.01	730,911.49	32.328543	-103.719587
13,300.00	90.00	179.69	9,180.00	-3,991.72	413.31	483,699.01	730,912.03	32.328268	-103.719588
13,400.00	90.00	179.69	9,180.00	-4,091.71	413.85	483,599.02	730,912.57	32.327993	-103.719588
13,500.00	90.00	179.69	9,180.00	-4,191.71	414.38	483,499.02	730,913.11	32.327718	-103.719588
13,600.00	90.00	179.69	9,180.00	-4,291.71	414.92	483,399.02	730,913.65	32.327443	-103.719588
13,700.00	90.00	179.69	9,180.00	-4,391.71	415.46	483,299.02	730,914.19	32.327169	-103.719588
13,800.00	90.00	179.69	9,180.00	-4,491.71	416.00	483,199.02	730,914.73	32.326894	-103.719588
13,900.00	90.00	179.69	9,180.00	-4,591.71	416.54	483,099.02	730,915.27	32.326619	-103.719588
14,000.00	90.00	179.69	9,180.00	-4,691.70	417.08	482,999.03	730,915.80	32.326344	-103.719588
14,053.00	90.00	179.69	9,180.00	-4,744.70	417.36	482,946.03	730,916.09	32.326198	-103.719588
<b>Cross Section @ 14053' MD, 0' FNL, 1040' FWL</b>									
14,100.00	90.00	179.69	9,180.00	-4,791.70	417.62	482,899.03	730,916.34	32.326069	-103.719588
14,200.00	90.00	179.69	9,180.00	-4,891.70	418.16	482,799.03	730,916.88	32.325794	-103.719589
14,300.00	90.00	179.69	9,180.00	-4,991.70	418.69	482,699.03	730,917.42	32.325519	-103.719589
14,400.00	90.00	179.69	9,180.00	-5,091.70	419.23	482,599.03	730,917.96	32.325244	-103.719589
14,500.00	90.00	179.69	9,180.00	-5,191.70	419.77	482,499.03	730,918.50	32.324970	-103.719589
14,600.00	90.00	179.69	9,180.00	-5,291.70	420.31	482,399.04	730,919.04	32.324695	-103.719589
14,700.00	90.00	179.69	9,180.00	-5,391.69	420.85	482,299.04	730,919.57	32.324420	-103.719589
14,800.00	90.00	179.69	9,180.00	-5,491.69	421.39	482,199.04	730,920.11	32.324145	-103.719589
14,900.00	90.00	179.69	9,180.00	-5,591.69	421.93	482,099.04	730,920.65	32.323870	-103.719589
15,000.00	90.00	179.69	9,180.00	-5,691.69	422.47	481,999.04	730,921.19	32.323595	-103.719589
15,100.00	90.00	179.69	9,180.00	-5,791.69	423.00	481,899.04	730,921.73	32.323320	-103.719590
15,200.00	90.00	179.69	9,180.00	-5,891.69	423.54	481,799.05	730,922.27	32.323045	-103.719590
15,300.00	90.00	179.69	9,180.00	-5,991.69	424.08	481,699.05	730,922.81	32.322771	-103.719590
15,400.00	90.00	179.69	9,180.00	-6,091.68	424.62	481,599.05	730,923.35	32.322496	-103.719590

# Planning Report - Geographic

Database:	EDM r5000.141_Prod US	Local Co-ordinate Reference:	Well Boundary Raider 6-7 Fed Com 521H
Company:	WCDSC Permian NM	TVD Reference:	RKB @ 3531.20ft
Project:	Eddy County (NAD 83 NM Eastern)	MD Reference:	RKB @ 3531.20ft
Site:	Sec 06-T23S-R32E	North Reference:	Grid
Well:	Boundary Raider 6-7 Fed Com 521H	Survey Calculation Method:	Minimum Curvature
Wellbore:	Wellbore #1		
Design:	Permit Plan 1		

Planned Survey										
Measured Depth (ft)	Inclination (°)	Azimuth (°)	Vertical Depth (ft)	+N/-S (ft)	+E/-W (ft)	Map Northing (usft)	Map Easting (usft)	Latitude	Longitude	
15,500.00	90.00	179.69	9,180.00	-6,191.68	425.16	481,499.05	730,923.88	32.322221	-103.719590	
15,600.00	90.00	179.69	9,180.00	-6,291.68	425.70	481,399.05	730,924.42	32.321946	-103.719590	
15,700.00	90.00	179.69	9,180.00	-6,391.68	426.24	481,299.05	730,924.96	32.321671	-103.719590	
15,800.00	90.00	179.69	9,180.00	-6,491.68	426.77	481,199.06	730,925.50	32.321396	-103.719590	
15,900.00	90.00	179.69	9,180.00	-6,591.68	427.31	481,099.06	730,926.04	32.321121	-103.719590	
16,000.00	90.00	179.69	9,180.00	-6,691.68	427.85	480,999.06	730,926.58	32.320846	-103.719591	
16,100.00	90.00	179.69	9,180.00	-6,791.67	428.39	480,899.06	730,927.12	32.320572	-103.719591	
16,200.00	90.00	179.69	9,180.00	-6,891.67	428.93	480,799.06	730,927.65	32.320297	-103.719591	
16,300.00	90.00	179.69	9,180.00	-6,991.67	429.47	480,699.06	730,928.19	32.320022	-103.719591	
16,400.00	90.00	179.69	9,180.00	-7,091.67	430.01	480,599.06	730,928.73	32.319747	-103.719591	
16,500.00	90.00	179.69	9,180.00	-7,191.67	430.55	480,499.07	730,929.27	32.319472	-103.719591	
16,600.00	90.00	179.69	9,180.00	-7,291.67	431.08	480,399.07	730,929.81	32.319197	-103.719591	
16,700.00	90.00	179.69	9,180.00	-7,391.67	431.62	480,299.07	730,930.35	32.318922	-103.719591	
16,800.00	90.00	179.69	9,180.00	-7,491.66	432.16	480,199.07	730,930.89	32.318647	-103.719591	
16,900.00	90.00	179.69	9,180.00	-7,591.66	432.70	480,099.07	730,931.43	32.318373	-103.719592	
17,000.00	90.00	179.69	9,180.00	-7,691.66	433.24	479,999.07	730,931.96	32.318098	-103.719592	
17,100.00	90.00	179.69	9,180.00	-7,791.66	433.78	479,899.08	730,932.50	32.317823	-103.719592	
17,200.00	90.00	179.69	9,180.00	-7,891.66	434.32	479,799.08	730,933.04	32.317548	-103.719592	
17,300.00	90.00	179.69	9,180.00	-7,991.66	434.85	479,699.08	730,933.58	32.317273	-103.719592	
17,400.00	90.00	179.69	9,180.00	-8,091.66	435.39	479,599.08	730,934.12	32.316998	-103.719592	
17,500.00	90.00	179.69	9,180.00	-8,191.65	435.93	479,499.08	730,934.66	32.316723	-103.719592	
17,600.00	90.00	179.69	9,180.00	-8,291.65	436.47	479,399.08	730,935.20	32.316448	-103.719592	
17,700.00	90.00	179.69	9,180.00	-8,391.65	437.01	479,299.09	730,935.73	32.316174	-103.719592	
17,800.00	90.00	179.69	9,180.00	-8,491.65	437.55	479,199.09	730,936.27	32.315899	-103.719593	
17,900.00	90.00	179.69	9,180.00	-8,591.65	438.09	479,099.09	730,936.81	32.315624	-103.719593	
18,000.00	90.00	179.69	9,180.00	-8,691.65	438.63	478,999.09	730,937.35	32.315349	-103.719593	
18,100.00	90.00	179.69	9,180.00	-8,791.65	439.16	478,899.09	730,937.89	32.315074	-103.719593	
18,200.00	90.00	179.69	9,180.00	-8,891.64	439.70	478,799.09	730,938.43	32.314799	-103.719593	
18,300.00	90.00	179.69	9,180.00	-8,991.64	440.24	478,699.10	730,938.97	32.314524	-103.719593	
18,400.00	90.00	179.69	9,180.00	-9,091.64	440.78	478,599.10	730,939.51	32.314249	-103.719593	
18,500.00	90.00	179.69	9,180.00	-9,191.64	441.32	478,499.10	730,940.04	32.313975	-103.719593	
18,600.00	90.00	179.69	9,180.00	-9,291.64	441.86	478,399.10	730,940.58	32.313700	-103.719593	
18,700.00	90.00	179.69	9,180.00	-9,391.64	442.40	478,299.10	730,941.12	32.313425	-103.719594	
18,800.00	90.00	179.69	9,180.00	-9,491.64	442.93	478,199.10	730,941.66	32.313150	-103.719594	
18,900.00	90.00	179.69	9,180.00	-9,591.63	443.47	478,099.11	730,942.20	32.312875	-103.719594	
19,000.00	90.00	179.69	9,180.00	-9,691.63	444.01	477,999.11	730,942.74	32.312600	-103.719594	
19,100.00	90.00	179.69	9,180.00	-9,791.63	444.55	477,899.11	730,943.28	32.312325	-103.719594	
19,200.00	90.00	179.69	9,180.00	-9,891.63	445.09	477,799.11	730,943.82	32.312050	-103.719594	
19,224.18	90.00	179.69	9,180.00	-9,915.81	445.22	477,774.93	730,943.95	32.311984	-103.719594	
LTP @ 19224' MD, 100' FSL, 1040' FWL										
19,300.00	90.00	179.69	9,180.00	-9,991.63	445.63	477,699.11	730,944.35	32.311776	-103.719594	
19,304.17	90.00	179.69	9,180.00	-9,995.80	445.65	477,694.94	730,944.38	32.311764	-103.719594	
PBHL; 20' FSL, 1040' FWL										
19,304.18	90.00	179.69	9,180.00	-9,995.81	445.65	477,694.93	730,944.38	32.311764	-103.719594	

Design Targets										
Target Name	Dip Angle (°)	Dip Dir. (°)	TVD (ft)	+N/-S (ft)	+E/-W (ft)	Northing (usft)	Easting (usft)	Latitude	Longitude	
- hit/miss target										
- Shape										
PBHL - Boundary Raider	0.00	0.00	0.00	-9,995.81	445.65	477,694.93	730,944.38	32.311764	-103.719594	
- plan misses target center by 9180.00ft at 19304.18ft MD (9180.00 TVD, -9995.81 N, 445.65 E)										
- Point										

## Planning Report - Geographic

<b>Database:</b>	EDM r5000.141_Prod US	<b>Local Co-ordinate Reference:</b>	Well Boundary Raider 6-7 Fed Com 521H
<b>Company:</b>	WCDSC Permian NM	<b>TVD Reference:</b>	RKB @ 3531.20ft
<b>Project:</b>	Eddy County (NAD 83 NM Eastern)	<b>MD Reference:</b>	RKB @ 3531.20ft
<b>Site:</b>	Sec 06-T23S-R32E	<b>North Reference:</b>	Grid
<b>Well:</b>	Boundary Raider 6-7 Fed Com 521H	<b>Survey Calculation Method:</b>	Minimum Curvature
<b>Wellbore:</b>	Wellbore #1		
<b>Design:</b>	Permit Plan 1		

### Plan Annotations

Measured Depth (ft)	Vertical Depth (ft)	Local Coordinates		Comment
		+N/-S (ft)	+E/-W (ft)	
8,646.18	8,607.04	335.00	390.00	KOP & FTP @ 8046' MD, 200' FNL, 1040' FWL
14,053.00	9,180.00	-4,744.70	417.36	Cross Section @ 14053' MD, 0' FNL, 1040' FWL
19,224.18	9,180.00	-9,915.81	445.22	LTP @ 19224' MD, 100' FSL, 1040' FWL
19,304.17	9,180.00	-9,995.80	445.65	PBHL; 20' FSL, 1040' FWL



# Devon Energy

WELL DETAILS: Boundary Raider 6-7 Fed Com 521H

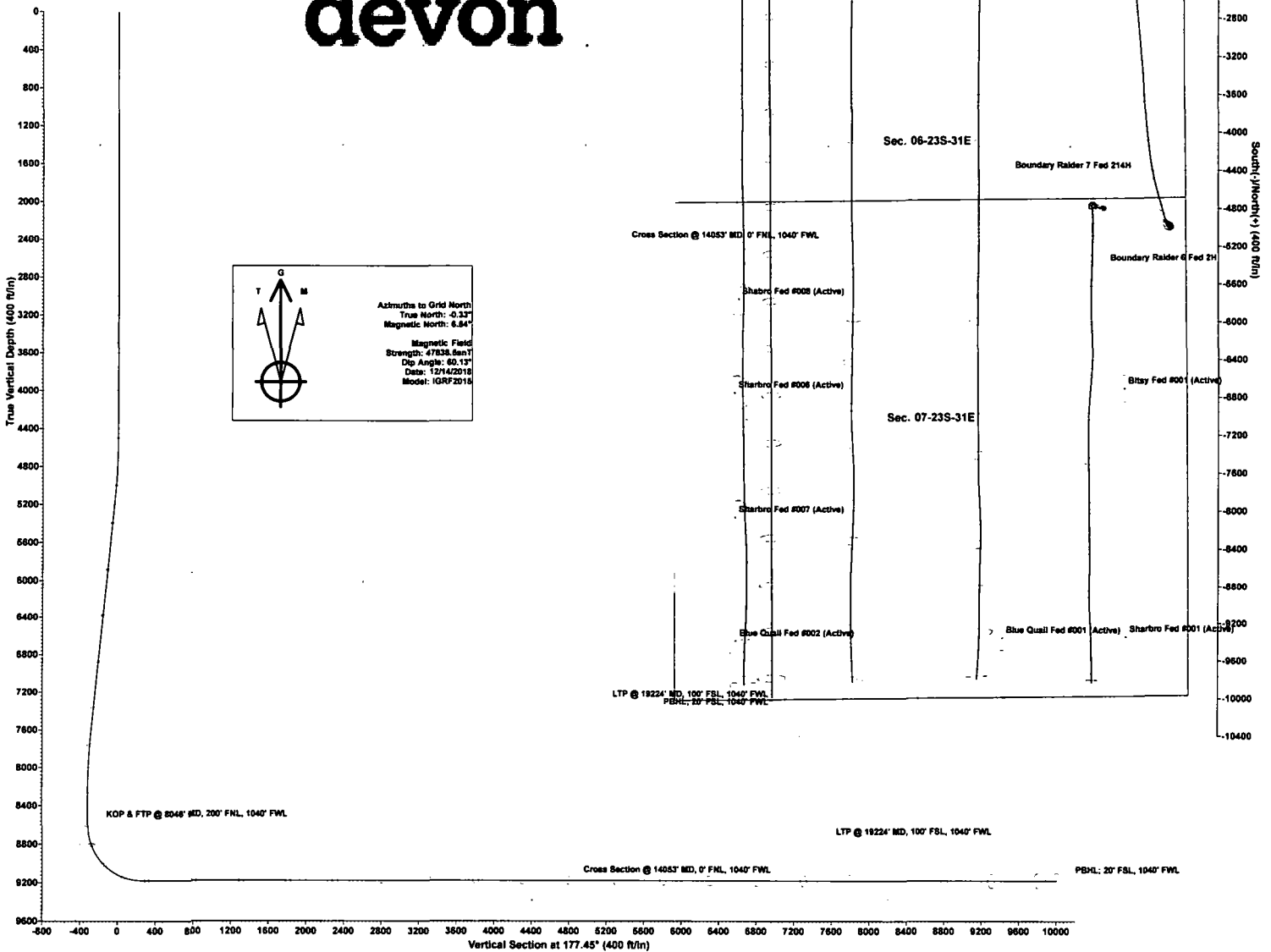
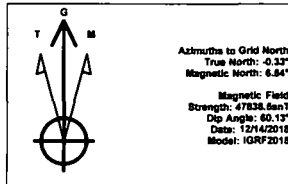
RKB @ 3531.20ft 3504.40

Northing 487690.72 Easting 730498.73 Latitude 32.339246 Longitude -103.720851

SECTION DETAILS Permit Plan 1

MD	Inc	Azi	TVD	+N-S	+E-W	Dleg	VSec	Annotation
0.00	0.00	0.00	0.00	0.00	0.00	0.00	0.00	
4500.00	0.00	0.00	4500.00	0.00	0.00	0.00	0.00	
5120.95	9.31	49.34	5118.22	32.82	38.20	1.50	-31.08	
7675.19	9.31	49.34	7638.78	302.18	351.80	0.00	-286.22	
8296.14	0.00	0.00	8257.00	335.00	390.00	1.50	-317.30	
8646.18	0.00	0.00	8607.04	335.00	390.00	0.00	-317.30	KOP & FTP @ 8046' MD, 200' FNL, 1040' FWL
9546.18	90.00	179.69	9180.00	-237.95	393.09	10.00	255.22	
19304.18	90.00	179.69	9180.00	-9995.81	445.65	0.00	10005.74	PBHL: 20' FSL, 1040' FWL

# devon



A multibowl wellhead may be used. The BOP will be tested per Onshore Order #2 after installation on the surface casing which will cover testing requirements for a maximum of 30 days. If any seal subject to test pressure is broken the system must be tested.

Devon proposes using a multi-bowl wellhead assembly. This assembly will only be tested when installed on the surface casing. Minimum working pressure of the blowout preventer (BOP) and related equipment (BOPE) required for drilling below the surface casing shoe shall be 5000 (5M) psi.

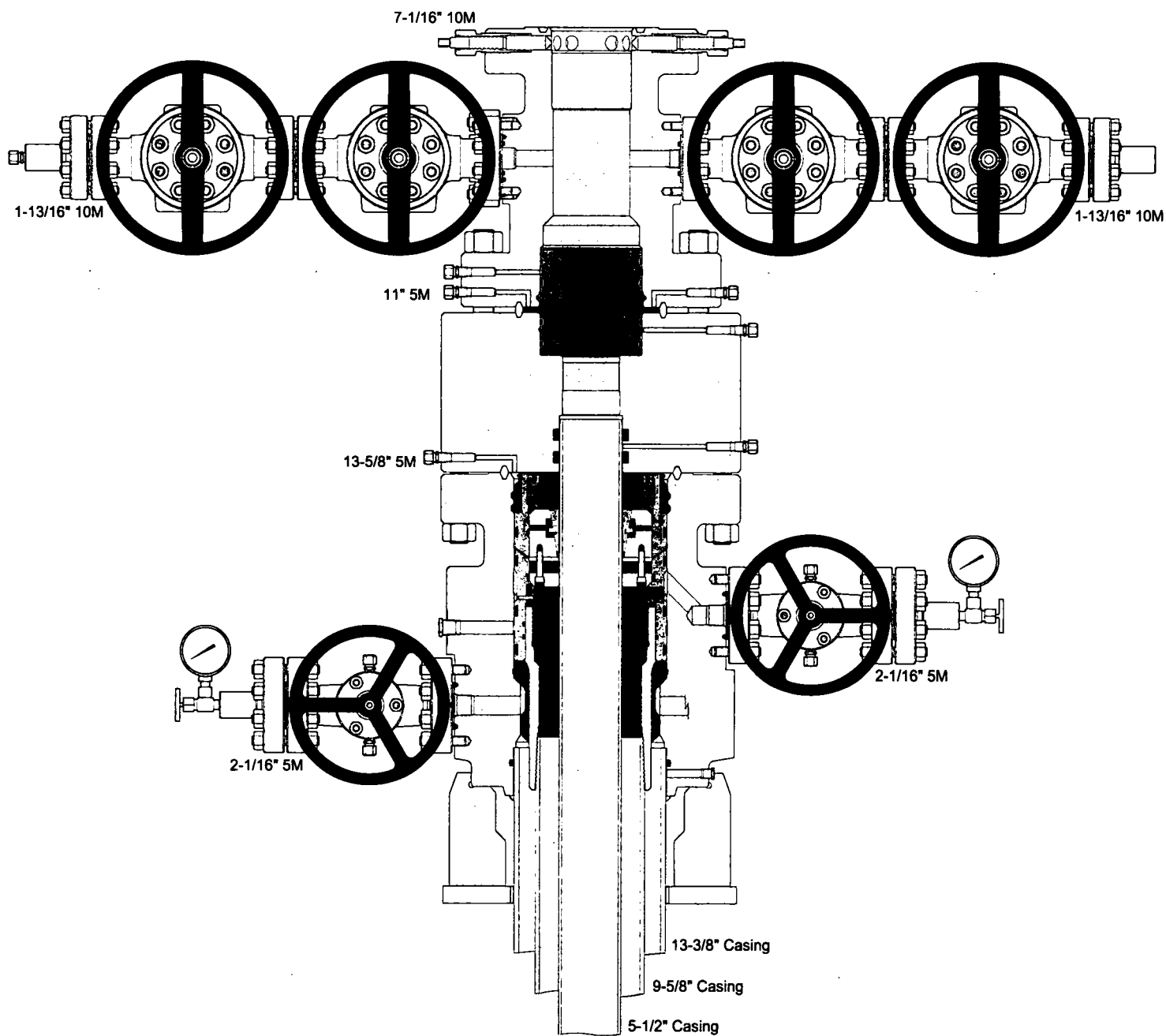
- Wellhead will be installed by wellhead representatives.
- If the welding is performed by a third party, the wellhead representative will monitor the temperature to verify that it does not exceed the maximum temperature of the seal.
- Wellhead representative will install the test plug for the initial BOP test.
- Wellhead company will install a solid steel body pack-off to completely isolate the lower head after cementing intermediate casing. After installation of the pack-off, the pack-off and the lower flange will be tested to 5M, as shown on the attached schematic. Everything above the pack-off will not have been altered whatsoever from the initial nipple up. Therefore the BOP components will not be retested at that time.
- If the cement does not circulate and one inch operations would have been possible with a standard wellhead, the well head will be cut and top out operations will be conducted.
- Devon will pressure test all seals above and below the mandrel (but still above the casing) to full working pressure rating.
- Devon will test the casing to 0.22 psi/ft or 1500 psi, whichever is greater, as per Onshore Order #2.

After running the 13-3/8" surface casing, a 13-5/8" BOP/BOPE system with a minimum rating of 5M will be installed on the wellhead system and will undergo a 250 psi low pressure test followed by a 5,000 psi high pressure test. The 5,000 psi high and 250 psi low test will cover testing requirements a maximum of 30 days, as per Onshore Order #2. If the well is not complete within 30 days of this BOP test, another full BOP test will be conducted, as per Onshore Order #2.

After running the 9-5/8" intermediate casing with a mandrel hanger, the 13-5/8" BOP/BOPE system with a minimum rating of 5M will already be installed on the wellhead.

The pipe rams will be operated and checked each 24 hour period and each time the drill pipe is out of the hole. These tests will be logged in the daily driller's log. A 2" kill line and 3" choke line will be incorporated into the drilling spool below the ram BOP. In addition to the rams and annular preventer, additional BOP accessories include a kelly cock, floor safety valve, choke lines, and choke manifold rated at 5,000 psi WP.

Devon's proposed wellhead manufactures will be FMC Technologies, Cactus Wellhead, or Cameron.





U.S. Department of the Interior  
BUREAU OF LAND MANAGEMENT

## PWD Data Report

01/30/2020

APD ID: 10400039997

Submission Date: 03/18/2019

Operator Name: DEVON ENERGY PRODUCTION COMPANY LP

Well Name: BOUNDARY RAIDER 6-7 FED COM

Well Number: 521H

Well Type: OIL WELL

Well Work Type: Drill

### Section 1 - General

Would you like to address long-term produced water disposal? NO

### Section 2 - Lined Pits

Would you like to utilize Lined Pit PWD options? NO

Produced Water Disposal (PWD) Location:

PWD surface owner:

PWD disturbance (acres):

Lined pit PWD on or off channel:

Lined pit PWD discharge volume (bbl/day):

Lined pit specifications:

Pit liner description:

Pit liner manufacturers information:

Precipitated solids disposal:

Describe precipitated solids disposal:

Precipitated solids disposal permit:

Lined pit precipitated solids disposal schedule:

Lined pit precipitated solids disposal schedule attachment:

Lined pit reclamation description:

Lined pit reclamation attachment:

Leak detection system description:

Leak detection system attachment:

**Operator Name:** DEVON ENERGY PRODUCTION COMPANY LP

**Well Name:** BOUNDARY RAIDER 6-7 FED COM

**Well Number:** 521H

**Lined pit Monitor description:**

**Lined pit Monitor attachment:**

**Lined pit: do you have a reclamation bond for the pit?**

**Is the reclamation bond a rider under the BLM bond?**

**Lined pit bond number:**

**Lined pit bond amount:**

**Additional bond information attachment:**

### **Section 3 - Unlined Pits**

**Would you like to utilize Unlined Pit PWD options?** NO

**Produced Water Disposal (PWD) Location:**

**PWD disturbance (acres):**

**PWD surface owner:**

**Unlined pit PWD on or off channel:**

**Unlined pit PWD discharge volume (bbl/day):**

**Unlined pit specifications:**

**Precipitated solids disposal:**

**Describe precipitated solids disposal:**

**Precipitated solids disposal permit:**

**Unlined pit precipitated solids disposal schedule:**

**Unlined pit precipitated solids disposal schedule attachment:**

**Unlined pit reclamation description:**

**Unlined pit reclamation attachment:**

**Unlined pit Monitor description:**

**Unlined pit Monitor attachment:**

**Do you propose to put the produced water to beneficial use?**

**Beneficial use user confirmation:**

**Estimated depth of the shallowest aquifer (feet):**

**Does the produced water have an annual average Total Dissolved Solids (TDS) concentration equal to or less than that of the existing water to be protected?**

**TDS lab results:**

**Geologic and hydrologic evidence:**

**State authorization:**

**Unlined Produced Water Pit Estimated percolation:**

**Unlined pit: do you have a reclamation bond for the pit?**

**Operator Name:** DEVON ENERGY PRODUCTION COMPANY LP

**Well Name:** BOUNDARY RAIDER 6-7 FED COM

**Well Number:** 521H

**Is the reclamation bond a rider under the BLM bond?**

**Unlined pit bond number:**

**Unlined pit bond amount:**

**Additional bond information attachment:**

#### **Section 4 - Injection**

**Would you like to utilize Injection PWD options? NO**

**Produced Water Disposal (PWD) Location:**

**PWD surface owner:**

**PWD disturbance (acres):**

**Injection PWD discharge volume (bbl/day):**

**Injection well mineral owner:**

**Injection well type:**

**Injection well number:**

**Injection well name:**

**Assigned injection well API number?**

**Injection well API number:**

**Injection well new surface disturbance (acres):**

**Minerals protection information:**

**Mineral protection attachment:**

**Underground Injection Control (UIC) Permit?**

**UIC Permit attachment:**

#### **Section 5 - Surface Discharge**

**Would you like to utilize Surface Discharge PWD options? NO**

**Produced Water Disposal (PWD) Location:**

**PWD surface owner:**

**PWD disturbance (acres):**

**Surface discharge PWD discharge volume (bbl/day):**

**Surface Discharge NPDES Permit?**

**Surface Discharge NPDES Permit attachment:**

**Surface Discharge site facilities information:**

**Surface discharge site facilities map:**

#### **Section 6 - Other**

**Would you like to utilize Other PWD options? NO**

**Produced Water Disposal (PWD) Location:**

**PWD surface owner:**

**PWD disturbance (acres):**

**Other PWD discharge volume (bbl/day):**

**Operator Name:** DEVON ENERGY PRODUCTION COMPANY LP

**Well Name:** BOUNDARY RAIDER 6-7 FED COM

**Well Number:** 521H

**Other PWD type description:**

**Other PWD type attachment:**

**Have other regulatory requirements been met?**

**Other regulatory requirements attachment:**



U.S. Department of the Interior  
BUREAU OF LAND MANAGEMENT

## Bond Info Data Report

01/30/2020

APD ID: 10400039997

Submission Date: 03/18/2019

Operator Name: DEVON ENERGY PRODUCTION COMPANY LP

Well Name: BOUNDARY RAIDER 6-7 FED COM

Well Number: 521H

Well Type: OIL WELL

Well Work Type: Drill

[Show Final Text](#)

### Bond Information

Federal/Indian APD: FED

BLM Bond number: CO1104

BIA Bond number:

Do you have a reclamation bond? NO

Is the reclamation bond a rider under the BLM bond?

Is the reclamation bond BLM or Forest Service?

BLM reclamation bond number:

Forest Service reclamation bond number:

Forest Service reclamation bond attachment:

Reclamation bond number:

Reclamation bond amount:

Reclamation bond rider amount:

Additional reclamation bond information attachment: