

DISTRICT I
1625 N. FRENCH DR., HOBBBS, NM 88240
Phone: (505) 535-0101 Fax: (505) 535-0720

DISTRICT II
811 S. FIRST ST., ARTESIA, NM 88210
Phone: (505) 748-1283 Fax: (505) 748-0720

DISTRICT III
1000 RIO BRAZOS RD., AZTEC, NM 87410
Phone: (505) 334-6178 Fax: (505) 334-6170

DISTRICT IV
1220 S. ST. FRANCIS DR., SANTA FE, NM 87505
Phone: (505) 476-3460 Fax: (505) 476-3462

State of New Mexico
Energy, Minerals & Natural Resources Department
OIL CONSERVATION DIVISION
1220 SOUTH ST. FRANCIS
Santa Fe, New Mexico 87505

Form C-102
Revised August 1, 2011
Submit one copy to appropriate
District Office

☐ AMENDED REPORT

WELL LOCATION AND ACREAGE DEDICATION PLAT

API Number 30-025-46837	Pool Code 5150 98135	Pool Name WC-025 G-09 5243710P, WOLF CAMP
Property Code 316705	Property Name BLUE KRAIT 23-14 FED	Well Number 32H
OGRID No. 6137	Operator Name DEVON ENERGY PRODUCTION COMPANY, L.P.	Elevation 3555.8'

Surface Location

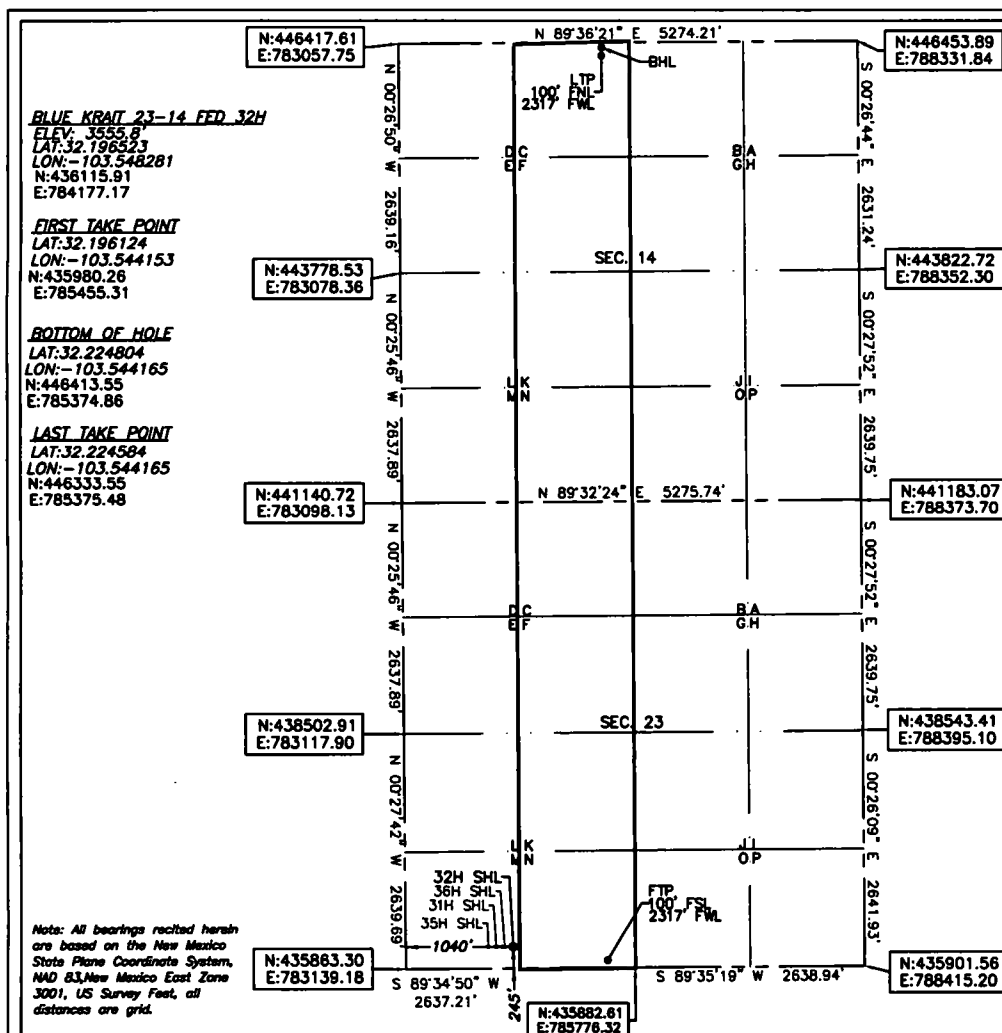
UL or lot No.	Section	Township	Range	Lot Idn	Feet from the	North/South line	Feet from the	East/West line	County
M	23	24-S	33-E		245	SOUTH	1040	WEST	LEA

Bottom Hole Location If Different From Surface

UL or lot No.	Section	Township	Range	Lot Idn	Feet from the	North/South line	Feet from the	East/West line	County
C	14	24-S	33-E		20	NORTH	2317	WEST	LEA

Dedicated Acres	Joint or Infill	Consolidation Code	Order No.
320			

NO ALLOWABLE WILL BE ASSIGNED TO THIS COMPLETION UNTIL ALL INTERESTS HAVE BEEN CONSOLIDATED OR A NON-STANDARD UNIT HAS BEEN APPROVED BY THE DIVISION



OPERATOR CERTIFICATION I hereby certify that the information herein is true and complete to the best of my knowledge and belief, and that this organization either owns a working interest or unleased mineral interest in the land including the proposed bottom hole location or has a right to drill this well at this location pursuant to a contract with an owner of such mineral or working interest, or to a voluntary pooling agreement or a compulsory pooling order heretofore entered by the division. Signature: <u>Rebecca Deal</u> Date: <u>1/21/2019</u> Rebecca Deal, Regulatory Analyst Printed Name rebecca.deal@dvn.com E-mail Address	
SURVEYOR CERTIFICATION I hereby certify that the well location shown on this plat was plotted from field notes of actual surveys made by me or under my supervision, and that the same is true and correct to the best of my belief. Date of Survey: <u>11/2018</u> Signature & Seal of Professional Surveyor 12/02/18 Certificate No. 22404 B.L. LAMAN Date of Survey: 11/16/18 DRAWN BY: CM	

Intent ☒ As Drilled ☐

API # 30-025-46833			
Operator Name: DEVON ENERGY PRODUCTION COMPANY, LP.		Property Name: BLUE KRAIT 23-14 FED	Well Number 32H

Kick Off Point (KOP)

UL	Section 23	Township 24S	Range 33E	Lot	Feet 65	From N/S FSL	Feet 1840	From E/W FWL	County LEA
Latitude 32.196013					Longitude -103.545774			NAD 83	

First Take Point (FTP)

UL N	Section 23	Township 24	Range 33	Lot	Feet 100	From N/S SOUTH	Feet 2317	From E/W WEST	County LEA
Latitude 32.196124					Longitude 103.544153			NAD 83	

Last Take Point (LTP)

UL C	Section 14	Township 24	Range 33	Lot	Feet 100	From N/S NORTH	Feet 2317	From E/W WEST	County LEA
Latitude 32.224584					Longitude 103.544165			NAD 83	

Is this well the defining well for the Horizontal Spacing Unit? ☐ N

Is this well an infill well? ☐ Y

If infill is yes please provide API if available, Operator Name and well number for Defining well for Horizontal Spacing Unit.

API #			
Operator Name: DEVON ENERGY PRODUCTION CO.		Property Name: Blue Krait 23-14 Fed	Well Number 36H

KZ 06/29/2018