

ALM/P/F

**DISTRICT I**  
1625 N. FRENCH DR., HOBBES, NM 88240  
Phone: (505) 898-6181 Fax: (505) 898-0780

**DISTRICT II**  
811 S. FIRST ST., ARTESIA, NM 88210  
Phone: (505) 748-1883 Fax: (505) 748-0780

**DISTRICT III**  
1000 RIO BRAZOS RD., AZTEC, NM 87410  
Phone: (505) 334-6178 Fax: (505) 334-6170

**DISTRICT IV**  
1220 S. ST. FRANCIS DR., SANTA FE, NM 87505  
Phone: (505) 476-3460 Fax: (505) 476-3465

**BUREAU OF LAND MANAGEMENT**  
**Energy, Minerals & Natural Resources Department**  
**OIL CONSERVATION DIVISION**  
1220 SOUTH ST. FRANCIS DR.  
Santa Fe, New Mexico 87505

Form C-102  
Revised August 1, 2011  
Submit one copy to appropriate  
District Office

FEB 07 2020

☐ AMENDED REPORT

**WELL LOCATION AND ACREAGE DEDICATION**

API Number <b>70-025-46862</b>	Pool Code <b>98117</b>	Pool Name <b>WC-025 G-09 S263504N; WOLFCAMP</b>
Property Code <b>727145</b>	Property Name <b>BILLIKEN 7-6 FED COM</b>	Well Number <b>7H</b>
OGRIID No. <b>6137</b>	Operator Name <b>DEVON ENERGY PRODUCTION COMPANY, L.P.</b>	Elevation <b>3270.3'</b>

**Surface Location**

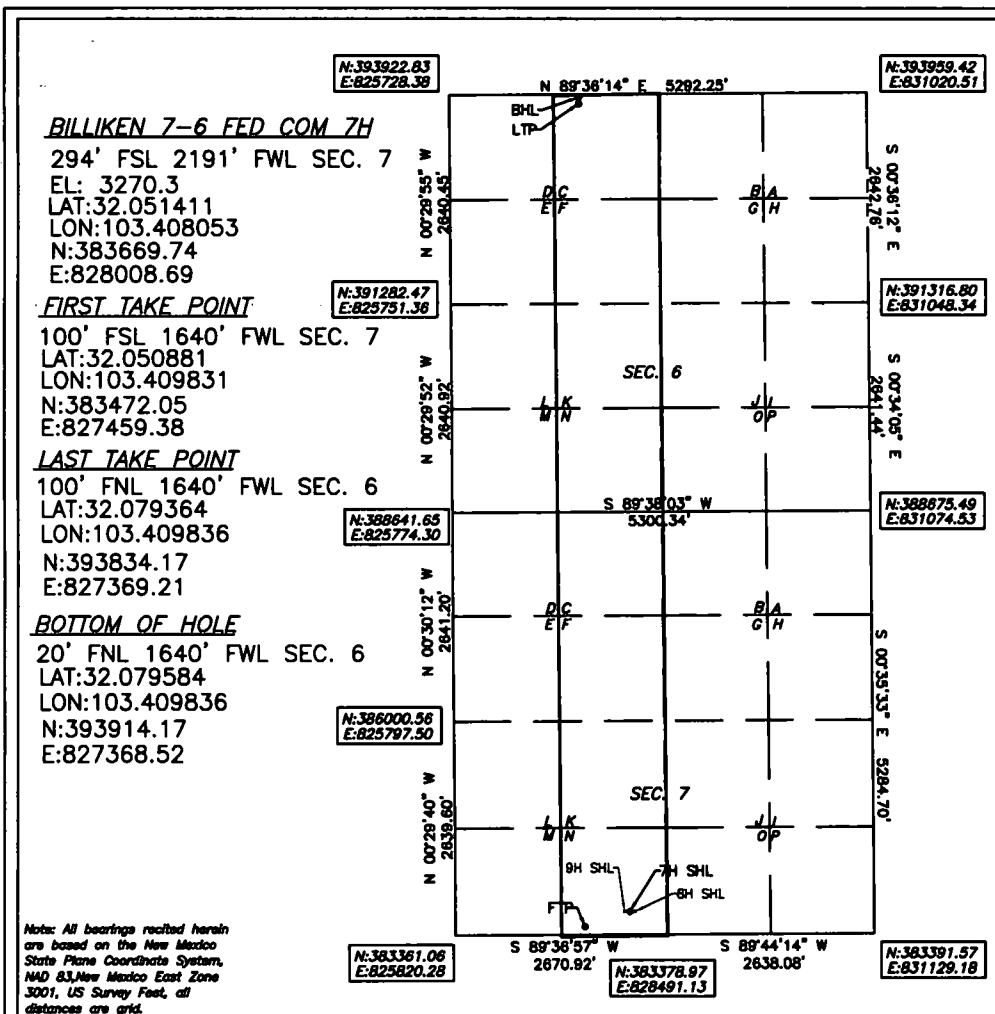
UL or lot No.	Section	Township	Range	Lot Idn	Feet from the	North/South line	Feet from the	East/West line	County
N	7	26-S	35-E		294	SOUTH	2191	WEST	LEA

**Bottom Hole Location If Different From Surface**

UL or lot No.	Section	Township	Range	Lot Idn	Feet from the	North/South line	Feet from the	East/West line	County
C	6	26-S	35-E		20	NORTH	1640	WEST	LEA

Dedicated Acres	Joint or Infill	Consolidation Code	Order No.
320			

**NO ALLOWABLE WILL BE ASSIGNED TO THIS COMPLETION UNTIL ALL INTERESTS HAVE BEEN CONSOLIDATED  
OR A NON-STANDARD UNIT HAS BEEN APPROVED BY THE DIVISION**



**OPERATOR CERTIFICATION**

I hereby certify that the information herein is true and complete to the best of my knowledge and belief, and that this organization either owns a working interest or unleased mineral interest in the land including the proposed bottom hole location or has a right to drill this well at this location pursuant to a contract with an owner of such mineral or working interest, or to a voluntary pooling agreement or a compulsory pooling order heretofore entered by the division.

Rebecca Deal 8/19/2019  
Signature Date

**Rebecca Deal, Regulatory Analyst**  
Printed Name

rebecca.deal@dvn.com  
E-mail Address

**SURVEYOR CERTIFICATION**

I hereby certify that the well location shown on this plat was plotted from field notes of actual surveys made by me or under my supervision, and that the same is true and correct to the best of my belief.

7/2019  
Date of Survey

Signature & Seal of Professional Surveyor

07/26/19

Certificate No. 22404 B.L. LAMAN  
DATE OF SURVEY: 6/02/19 DRAWN BY: JP

Intent ☒ As Drilled ☐

API #

30-024-46562

Operator Name:  
DEVON ENERGY PRODUCTION  
COMPANY, LP.

Property Name:  
BILLIKEN 7-6 FED COM

Well Number  
7H

Kick Off Point (KOP)

UL	Section	Township	Range	Lot	Feet	From N/S	Feet	From E/W	County
	7	26S	35E		50	FSL	1640	FWL	LEA
Latitude					Longitude				NAD
32.050753					-103.409838				83

First Take Point (FTP)

UL	Section	Township	Range	Lot	Feet	From N/S	Feet	From E/W	County
N	7	26-S	35-E		100	SOUTH	1640	WEST	LEA
Latitude					Longitude				NAD
32.050881					103.409831				83

Last Take Point (LTP)

UL	Section	Township	Range	Lot	Feet	From N/S	Feet	From E/W	County
C	6	26-S	35-E		100	NORTH	1640	WEST	LEA
Latitude					Longitude				NAD
32.079364					103.409836				83

Is this well the defining well for the Horizontal Spacing Unit?

☐ N

Is this well an infill well?

☐ Y

If infill is yes please provide API if available, Operator Name and well number for Defining well for Horizontal Spacing Unit.

API #

Operator Name:  
DEVON ENERGY PRODUCTION CO.

Property Name:  
BILLIKEN 7-6 FED COM

Well Number  
8H

KZ 06/29/2018