

DISTRICT I  
1625 W. FRENCH DR., HOBBS, NM 88240  
Phone: (505) 532-6161 Fax: (505) 532-0720

DISTRICT II  
511 S. FIRST ST., ARTESIA, NM 88210  
Phone: (505) 748-1253 Fax: (505) 748-0720

DISTRICT III  
1000 RIO BRAZOS RD., AZTEC, NM 87410  
Phone: (505) 334-6176 Fax: (505) 334-6170

DISTRICT IV  
1820 S. ST. FRANCIS DR., SANTA FE, NM 87505  
Phone: (505) 476-3460 Fax: (505) 476-3468

State of New Mexico  
Energy, Minerals & Natural Resources Department  
**OIL CONSERVATION DIVISION**  
1220 SOUTH ST. FRANCIS  
Santa Fe, New Mexico 87505

Form C-102  
Revised August 1, 2011  
Submit one copy to appropriate  
District Office

☐ AMENDED REPORT

WELL LOCATION AND ACREAGE DEDICATION PLAT

API Number <b>30-025-46857</b>	Pool Code <b>5150 96474</b>	Pool Name <b>BELL LAKE; BONE SPRING, NORTH</b>
Property Code <b>31 5754</b>	Property Name <b>BLUE KRAIT 23 FED</b>	Well Number <b>21H</b>
OGRID No. <b>6137</b>	Operator Name <b>DEVON ENERGY PRODUCTION COMPANY, L.P.</b>	Elevation <b>3563.2'</b>

Surface Location

UL or lot No.	Section	Township	Range	Lot Idn	Feet from the	North/South line	Feet from the	East/West line	County
P	23	24-S	33-E		398	SOUTH	934	EAST	LEA

Bottom Hole Location If Different From Surface

UL or lot No.	Section	Township	Range	Lot Idn	Feet from the	North/South line	Feet from the	East/West line	County
A	23	24-S	33-E		20	NORTH	380	EAST	LEA

Dedicated Acres	Joint or Infill	Consolidation Code	Order No.
160			

NO ALLOWABLE WILL BE ASSIGNED TO THIS COMPLETION UNTIL ALL INTERESTS HAVE BEEN CONSOLIDATED  
OR A NON-STANDARD UNIT HAS BEEN APPROVED BY THE DIVISION

**BLUE KRAIT 23 FED 21H**

ELEV: 3563.2'  
LAT: 32.196943  
LON: -103.537606  
N: 436292.84  
E: 787478.19

**FIRST TAKE POINT**

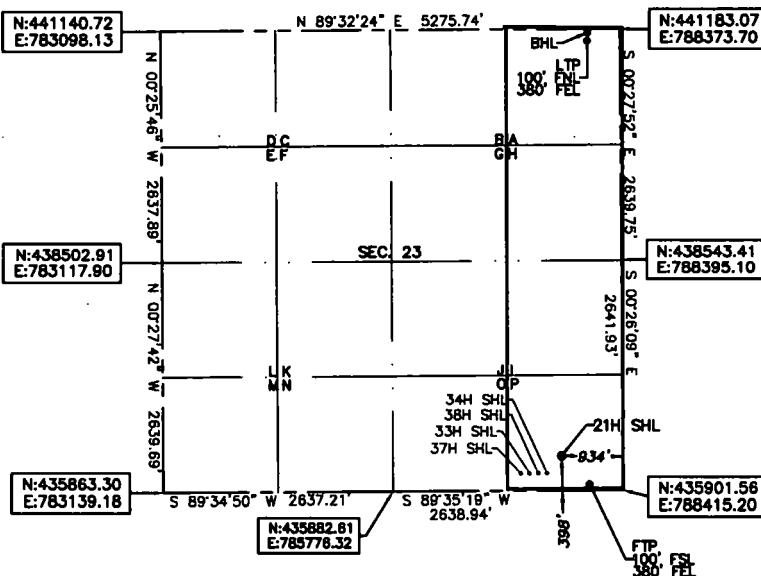
LAT: 32.196123  
LON: -103.535815  
N: 435998.82  
E: 788034.45

**BOTTOM OF HOLE**

LAT: 32.210310  
LON: -103.535822  
N: 441160.02  
E: 787993.88

**LAST TAKE POINT**

LAT: 32.210090  
LON: -103.535822  
N: 441080.02  
E: 787994.53



Note: All bearings recited herein  
are based on the New Mexico  
State Plane Coordinate System,  
NAD 83, New Mexico East Zone  
3001, US Survey Feet, all  
distances are grid.

**OPERATOR CERTIFICATION**

I hereby certify that the information  
herein is true and complete to the best of  
my knowledge and belief, and that this  
organization either owns a working interest  
or unleased mineral interest in the land  
including the proposed bottom hole location  
or has a right to drill this well at this  
location pursuant to a contract with an  
owner of such mineral or working interest,  
or to a voluntary pooling agreement or a  
compulsory pooling order heretofore entered  
by the division.

Rebecca Deal 1/21/2019  
Signature Date

Rebecca Deal, Regulatory Analyst  
Printed Name

rebecca.deal@dvn.com  
E-mail Address

**SURVEYOR CERTIFICATION**

I hereby certify that the well location  
shown on this plat was plotted from field  
notes of actual surveys made by me or  
under my supervision, and that the same is  
true and correct to the best of my belief.

11/2018

Date of Survey

Signature & Seal of Professional Surveyor



12/05/18

Certificate No. 22404 B.L. LAMAN  
Date of Survey: 11/16/18 DRAWN BY: CM

Intent ☒ As Drilled ☐

API #

Operator Name: DEVON ENERGY PRODUCTION COMPANY, LP.	Property Name: BLUE KRAIT 23 FED	Well Number 21H
---	-------------------------------------	--------------------

Kick Off Point (KOP)

UL	Section 23	Township 24S	Range 33E	Lot	Feet 448	From N/S FSL	Feet 534	From E/W FEL	County LEA
Latitude 32.197072					Longitude -103.536312			NAD 83	

First Take Point (FTP)

UL P	Section 23	Township 24	Range 33	Lot	Feet 100	From N/S SOUTH	Feet 380	From E/W EAST	County LEA
Latitude 32.196123					Longitude 103.535815			NAD 83	

Last Take Point (LTP)

UL A	Section 23	Township 24	Range 33	Lot	Feet 100	From N/S NORTH	Feet 380	From E/W EAST	County LEA
Latitude 32.210090					Longitude 103.535822			NAD 83	

Is this well the defining well for the Horizontal Spacing Unit? ☐ N

Is this well an infill well? ☐ Y

If infill is yes please provide API if available, Operator Name and well number for Defining well for Horizontal Spacing Unit.

API #  
30-025-43239

Operator Name: DEVON ENERGY PRODUCTION CO.	Property Name: Blue Krait 23 Fed	Well Number 6H
---	-------------------------------------	-------------------

KZ 06/29/2018