

District I
1625 N. French Dr., Hobbs, NM 88240
Phone: (575) 393-6161 Fax: (575) 393-0720
District II
811 S. First St., Artesia, NM 88210
Phone: (575) 748-1283 Fax: (575) 748-9720
District III
1000 Rio Brazos Road, Aztec, NM 87410
Phone: (505) 334-6178 Fax: (505) 334-6170
District IV
1220 S. [REDACTED]
Phone: [REDACTED]

State of New Mexico
Energy, Minerals & Natural Resources Department
OIL CONSERVATION DIVISION
1220 South St. Francis Dr.
Santa Fe, NM 87505

Form C-102
Revised August 1, 2011
Submit one copy to appropriate
District Office

HOBBS OCD ☒ AMENDED REPORT

FEB 10 2020

RECEIVED

¹ API Number 30-025-46314	² Pool Code 98094	³ Pool Name Bobcat Draw; UPR Wolfcamp
⁴ Property Code 314104	⁵ Property Name CASCADE 28 FEDERAL	⁶ Well Number 86H
⁷ OGRID No. 215099	⁸ Operator Name CIMAREX ENERGY CO.	⁹ Elevation 3365.6

¹⁰ Surface Location

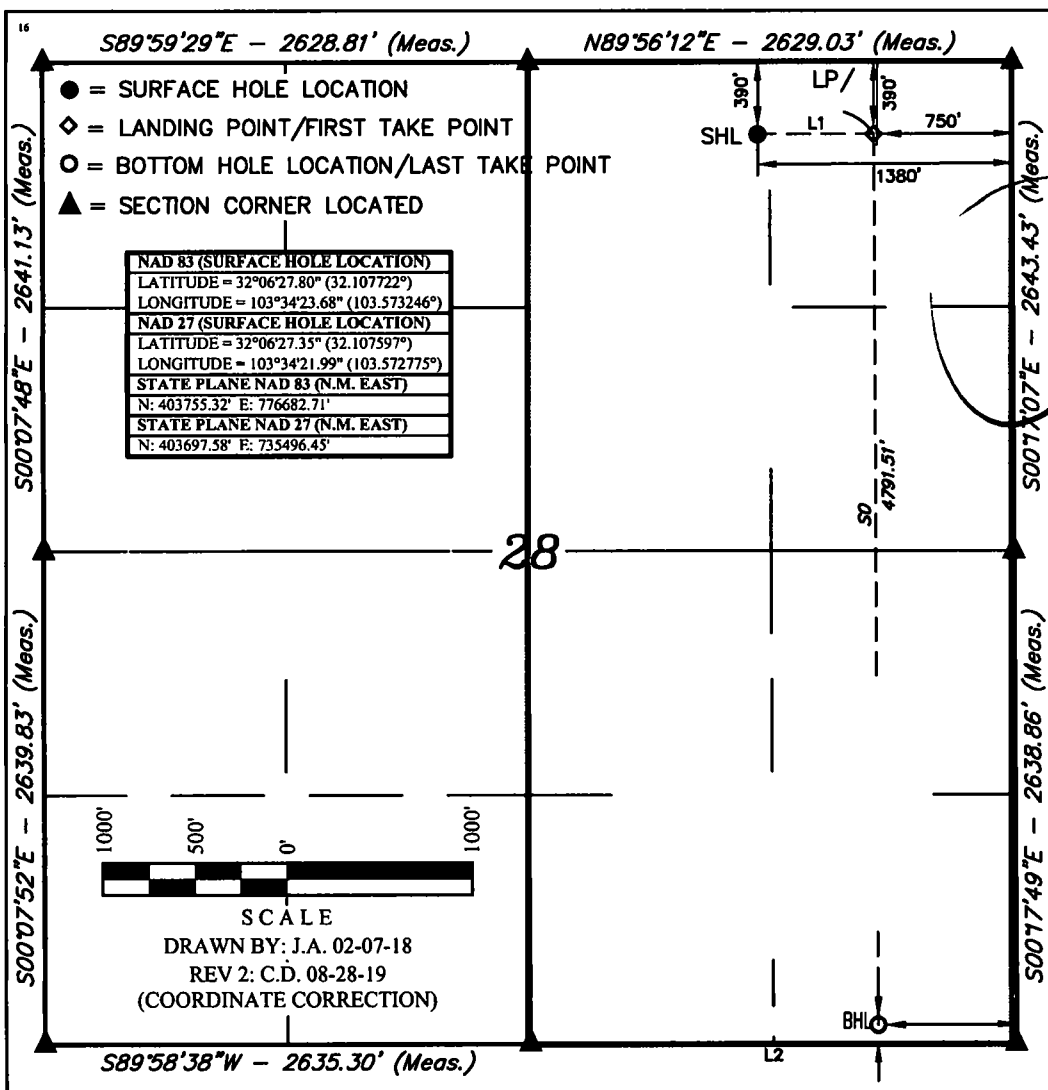
UL or lot no.	Section	Township	Range	Lot Idn	Feet from the	North/South line	Feet from the	East/West line	County
B	28	25S	33E		390	NORTH	1380	EAST	LEA

¹¹ Bottom Hole Location If Different From Surface

UL or lot no.	Section	Township	Range	Lot Idn	Feet from the	North/South line	Feet from the	East/West line	County
P	28	25S	33E		100	SOUTH	740	EAST	LEA

¹² Dedicated Acres 320	¹³ Joint or Infill	¹⁴ Consolidation Code	¹⁵ Order No.
--------------------------------------	-------------------------------	----------------------------------	-------------------------

No allowable will be assigned to this completion until all interests have been consolidated or a non-standard unit has been approved by the division.



¹⁷ OPERATOR
CERTIFICATION

I hereby certify that the information contained herein is true and complete to the best of my knowledge and belief, and that this organization either owns a working interest or unleased mineral interest in the land including the proposed bottom hole location or has a right to drill this well at this location pursuant to a contract with an owner of such a mineral or working interest, or to a voluntary pooling agreement or a compulsory pooling order heretofore entered by the division.

2/1/2020

Signature _____ Date _____

TStathem

Printed Name

Regulatory

E-mail Address

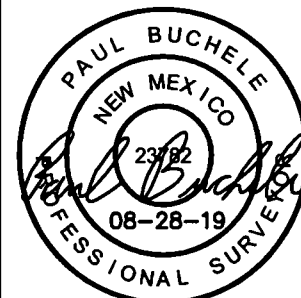
¹⁸ SURVEYOR
CERTIFICATION

I hereby certify that the well location shown on this plat was plotted from field notes of actual surveys made by me or under my supervision, and that the same is true and correct to the best of my belief.

January 24, 2018

Date of Survey

Signature and Seal of Professional Surveyor:



Certificate Number:

Intent ☐ As Drilled ☒

API #
30-025-46314

Operator Name: Cimarex Energy Co. (215099)	Property Name: Cascade 28 Federal	Well Number 86H
-----------------------------------------------	--------------------------------------	--------------------

Kick Off Point (KOP)

UL B	Section 28	Township 25S	Range 33E	Lot	Feet 405	From N/S NORTH	Feet 773	From E/W East	County Lea
Latitude 32.0107681					Longitude -103.571286				NAD 83

First Take Point (FTP)

UL B	Section 28	Township 25S	Range 33E	Lot	Feet 687	From N/S NORTH	Feet 747	From E/W East	County Lea
Latitude 32.106903					Longitude -103.5712				NAD 83

Last Take Point (LTP)

UL P	Section 28	Township 25S	Range 33E	Lot	Feet 129	From N/S SOUTH	Feet 742	From E/W East	County Lea
Latitude 32.094631					Longitude -103.571153				NAD 83

Is this well the defining well for the Horizontal Spacing Unit? ☐ NO

Is this well an infill well? ☐ YES

If infill is yes please provide API if available, Operator Name and well number for Defining well for Horizontal Spacing Unit.

API #
30-025-45990

Operator Name: Cimarex Energy Co.	Property Name: CASCADE 28 FED	Well Number 71H
--------------------------------------	----------------------------------	--------------------

KZ 06/29/2018