

District I
1625 N. French Dr., Hobbs, NM 88240
Phone: (575) 393-6161 Fax: (575) 393-0720
District II
811 S. First St., Artesia, NM 88210
Phone: (575) 748-1283 Fax: (575) 748-9720
District III
1000 Rio Brazos Road, Aztec, NM 87410
Phone: (505) 334-6178 Fax: (505) 334-6170
District IV
1220 S. St. Francis Dr., Santa Fe, NM 87505
Phone: (505) 476-3460 Fax: (505) 476-3462

State of New Mexico
Energy, Minerals & Natural Resources Department
OIL CONSERVATION DIVISION
1220 South St. Francis Dr.
Santa Fe, NM 87505

Form C-102
Revised August 1, 2011
Submit one copy to appropriate
District Office

☐ AMENDED REPORT

HOBBS OIL
FEB 05 2020
RECEIVED

WELL LOCATION AND ACREAGE DEDICATION PLAT

¹ API Number 30-025-46594	² Pool Code 96553	³ Pool Name Ojo Chiso; Bone Spring
⁴ Property Code 322870	⁵ Property Name CHORIZO 12 STATE COM	⁶ Well Number 603Y
⁷ OGRID No. 372165	⁸ Operator Name CENTENNIAL RESOURCE PRODUCTION, LLC	⁹ Elevation 3633.5'

¹⁰ Surface Location

UL or lot no.	Section	Township	Range	Lot Idn	Feet from the	North/South line	Feet from the	East/West line	County
K	36	21S	34E		1477	SOUTH	1682	WEST	LEA

¹¹ Bottom Hole Location If Different From Surface

UL or lot no.	Section	Township	Range	Lot Idn	Feet from the	North/South line	Feet from the	East/West line	County
F	12	22S	34E		2548	NORTH	2340	WEST	LEA
¹² Dedicated Acres 322.49	¹³ Joint or Infill 30	¹⁴ Consolidation Code	¹⁵ Order No.						

No allowable will be assigned to this completion until all interests have been consolidated or a non-standard unit has been approved by the division.

- = AS-DRILLED SURFACE
HOLE LOCATION
◇ = AS-DRILLED KICK OFF POINT/
FIRST TAKE POINT/
LAST TAKE POINT
○ = AS-DRILLED BOTTOM HOLE
LOCATION
▲ = SECTION CORNER LOCATED

LINE TABLE		
LINE	DIRECTION	LENGTH
L1	S89°37'34"W	2639.85'
L2	S89°45'15"W	2639.09'

APPROXIMATE WELL BORE DISTANCE FROM FTP TO LTP	
SECTION 36	898.54'
SECTION 1	5,367.55'
SECTION 12	2,491.82'
TOTAL	8,757.91'

NAD 83 (AS-DRILLED SHL)	
LATITUDE = 32°25'56.19" (32.432275°)	
LONGITUDE = 103°25'35.87" (103.426631°)	
STATE PLANE NAD 83 (N.M. EAST)	
Y: 522179.81' X: 821082.74'	
UTM, NAD 83 (ZONE 13)	
Y: 11776358.04' X: 2125716.23'	

NAD 83 (AS-DRILLED KOP)	
LATITUDE = 32°25'56.37" (32.432325°)	
LONGITUDE = 103°25'28.43" (103.424565°)	
STATE PLANE NAD 83 (N.M. EAST)	
Y: 522203.68' X: 821720.14'	
UTM, NAD 83 (ZONE 13)	
Y: 11776385.88' X: 2126353.39'	

NAD 83 (AS-DRILLED FTP)	
LATITUDE = 32°25'50.47" (32.430686°)	
LONGITUDE = 103°25'28.37" (103.424547°)	
STATE PLANE NAD 83 (N.M. EAST)	
Y: 521607.16' X: 821730.67'	
UTM, NAD 83 (ZONE 13)	
Y: 11775789.51' X: 2126367.63'	

NAD 83 (AS-DRILLED LTP)	
LATITUDE = 32°24'23.87" (32.406632°)	
LONGITUDE = 103°25'28.45" (103.424570°)	
STATE PLANE NAD 83 (N.M. EAST)	
Y: 512855.96' X: 821797.85'	
UTM, NAD 83 (ZONE 13)	
Y: 11776040.02' X: 2126489.41'	

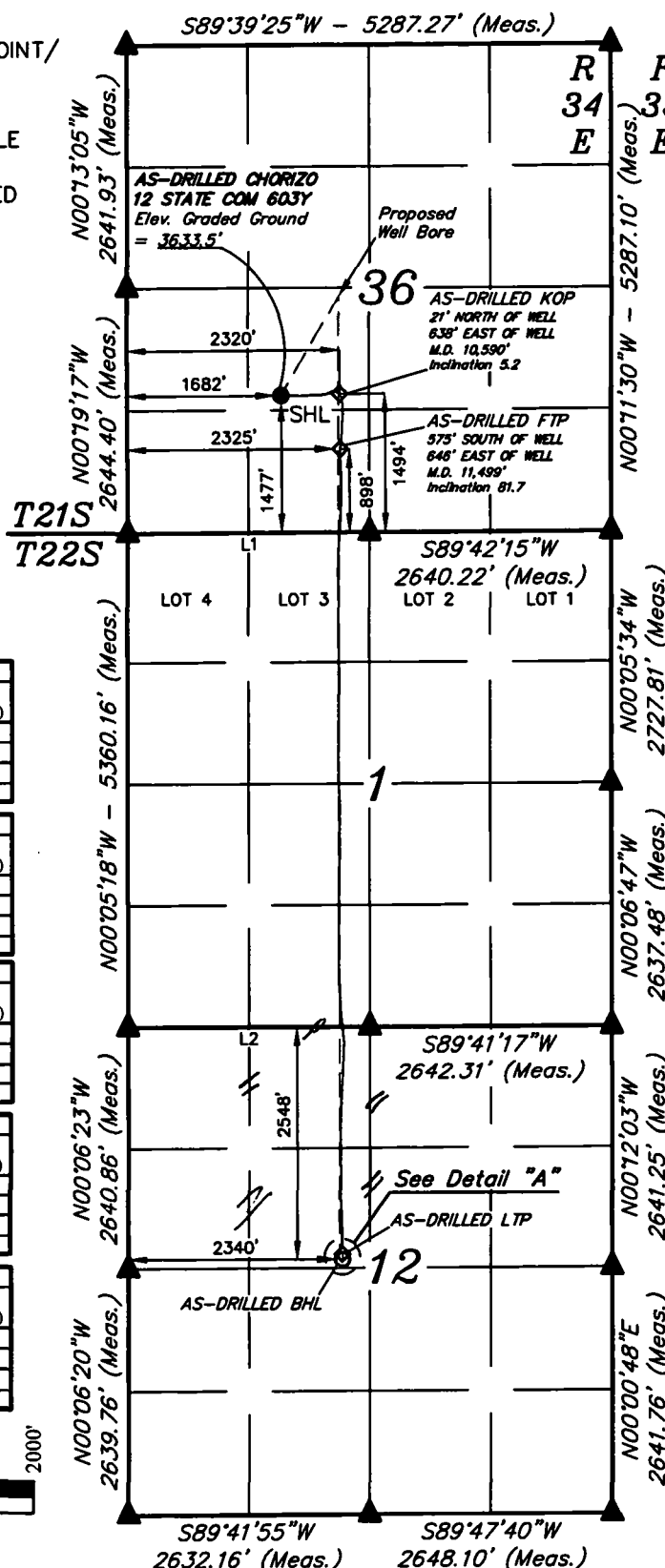
NAD 83 (AS-DRILLED BHL)	
LATITUDE = 32°24'23.30" (32.406472°)	
LONGITUDE = 103°25'28.42" (103.424562°)	
STATE PLANE NAD 83 (N.M. EAST)	
Y: 512798.06' X: 821800.86'	
UTM, NAD 83 (ZONE 13)	
Y: 11766982.16' X: 2126492.78'	



SCALE

DRAWN BY: C.D. 02-03-20

REV: 1 02-04-20 C.D. (NAME CHANGE)



¹⁶ OPERATOR
CERTIFICATION

I hereby certify that the information contained herein is true and complete to the best of my knowledge and belief, and that this organization either owns a working interest or unleased mineral interest in the land including the proposed bottom hole location or has a right to drill this well at this location pursuant to a contract with an owner of such a mineral or working interest, or to a voluntary pooling agreement or a compulsory pooling order heretofore entered by the division.

Signature: *Sarah Ferreyros* Date: 2/5/20

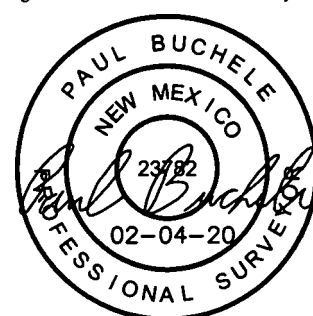
Printed Name
Sarah Ferreyros
@cdevinc.com
E-mail Address

¹⁷ SURVEYOR
CERTIFICATION

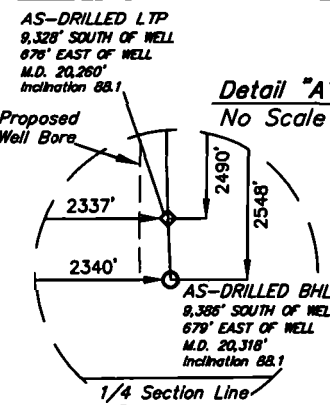
I hereby certify that the well location shown on this plat was plotted from field notes of actual surveys made by me or under my supervision, and that the same is true and correct to the best of my belief.

February 3, 2020

Date of Survey
Signature and Seal of Professional Surveyor:



Certificate Number:



- NOTE:
- Distances referenced on plat to section lines are perpendicular.
 - Basis of Bearing is a Transverse Mercator Projection with a Central Meridian of W103°53'00" (NAD 83)
 - Well bore data provided by Centennial Resource Production, LLC