

DISTRICT I
1625 N. French Dr., Hobbs, NM 88240
Phone: (575) 393-6161 Fax: (575) 393-0720

DISTRICT II
811 S. First St., Artesia, NM 88210
Phone: (575) 748-1283 Fax: (575) 748-9720

DISTRICT III
1000 Rio Brazos Road, Aztec, NM 87410
Phone: (505) 334-6178 Fax: (505) 334-6170

DISTRICT IV
1220 S. St. Francis Dr., Santa Fe, NM 87505
Phone: (505) 476-3460 Fax: (505) 476-3462

State of New Mexico
Energy, Minerals & Natural Resources Department
OIL CONSERVATION DIVISION
1220 South St. Francis Dr.
Santa Fe, New Mexico 87505

HOBBS OCD
FEB 03 2020
RECEIVED

Form C-102
Revised August 1, 2011
Submit one copy to appropriate
District Office

AMENDED REPORT

WELL LOCATION AND ACREAGE DEDICATION PLAT

| | | |
|-----------------------------------|---|--|
| API Number 30-025-46147 | Pool Code 98094 | Pool Name Bobcat Draw - Upper Wolfcamp |
| Property Code 322775 | Property Name ROJO 7811 34-27 FEDERAL | Well Number 38H |
| OGRID No. 260297 | Operator Name BTA OIL PRODUCERS, LLC | Elevation 3327' |

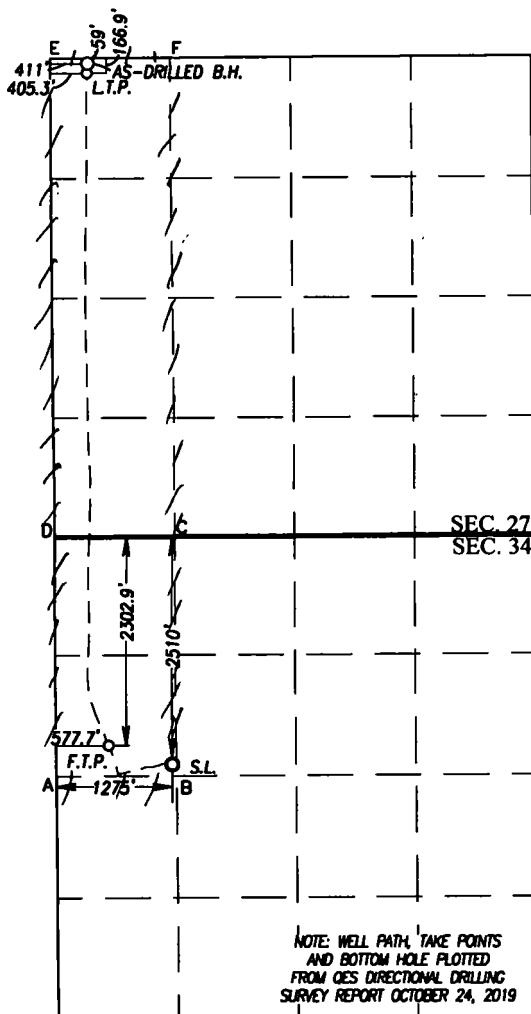
Surface Location

| UL or lot No. | Section | Township | Range | Lot Idn | Feet from the | North/South line | Feet from the | East/West line | County |
|---------------|---------|----------|-------|---------|---------------|------------------|---------------|----------------|--------|
| E | 34 | 25-S | 33-E | | 2510 | NORTH | 1275 | WEST | LEA |

AS-Drilled Bottom Hole Location If Different From Surface

| UL or lot No. | Section | Township | Range | Lot Idn | Feet from the | North/South line | Feet from the | East/West line | County |
|-------------------------------|-----------------|--------------------|-----------|---------|---------------|------------------|---------------|----------------|--------|
| D | 27 | 25-S | 33-E | | 59 | NORTH | 411 | WEST | LEA |
| Dedicated Acres 240 | Joint or Infill | Consolidation Code | Order No. | | | | | | |

NO ALLOWABLE WILL BE ASSIGNED TO THIS COMPLETION UNTIL ALL INTERESTS HAVE BEEN CONSOLIDATED OR A NON-STANDARD UNIT HAS BEEN APPROVED BY THE DIVISION



| | |
|--|--|
| SCALE: 1"=2000' | |
| AS-DRILLED BOTTOM HOLE LOCATION NAD 83 NME Y= 404096.5 N X= 778470.5 E LAT.=32.108625° N LONG.=103.567464° W | AS-DRILLED BOTTOM HOLE LOCATION NAD 27 NME Y= 404038.7 N X= 737284.2 E LAT.=32.108500° N LONG.=103.566993° W |
| LAST TAKE POINT NAD 83 NME Y= 403988.6 N X= 778465.8 E LAT.=32.108328° N LONG.=103.567482° W | LAST TAKE POINT NAD 27 NME Y= 403930.9 N X= 737279.5 E LAT.=32.108204° N LONG.=103.567011° W |
| CORNER COORDINATES TABLE NAD 27 NME | |
| A - Y= 396178.3 N, X= 736945.0 E | |
| B - Y= 396185.7 N, X= 738267.7 E | |
| C - Y= 398822.6 N, X= 738243.9 E | |
| D - Y= 398814.0 N, X= 736921.4 E | |
| E - Y= 404095.0 N, X= 736872.7 E | |
| F - Y= 404103.8 N, X= 738199.0 E | |
| CORNER COORDINATES TABLE NAD 83 NME | |
| A - Y= 396235.8 N, X= 778131.6 E | |
| B - Y= 396243.2 N, X= 779454.4 E | |
| C - Y= 398880.1 N, X= 779430.4 E | |
| D - Y= 398871.6 N, X= 778107.9 E | |
| E - Y= 404152.8 N, X= 778059.0 E | |
| F - Y= 404161.5 N, X= 779385.3 E | |
| FIRST TAKE POINT NAD 83 NME Y= 396572.9 N X= 778706.2 E LAT.=32.087940° N LONG.=103.566876° W | FIRST TAKE POINT NAD 27 NME Y= 396515.4 N X= 737519.6 E LAT.=32.087815° N LONG.=103.566406° W |
| GEODETIC COORDINATES NAD 83 NME SURFACE LOCATION Y= 396370.4 N X= 779405.2 E LAT.=32.087370° N LONG.=103.564624° W | GEODETIC COORDINATES NAD 27 NME SURFACE LOCATION Y= 396312.8 N X= 738218.6 E LAT.=32.087245° N LONG.=103.564154° W |

OPERATOR CERTIFICATION

I hereby certify that the information herein is true and complete to the best of my knowledge and belief, and that this organization either owns a working interest or unleased mineral interest in the land including the proposed bottom hole location or has a right to drill this well at this location pursuant to a contract with an owner of such mineral or working interest, or to a voluntary pooling agreement or a compulsory pooling order heretofore entered by the division.

Signature: *Katy Reddelle* Date: *1/29/20*
Printed Name: **KATY REDDELLE**
E-mail Address: **Kreddelle@btaoil.com**

SURVEYOR CERTIFICATION

I hereby certify that the well location shown on this plat was plotted from the notes of the survey made by me or under my supervision and that the same is true and correct to the best of my belief.

Date of Survey: *1/29/20*
Signature: *Gary G. Eidson*
12641
REGISTERED PROFESSIONAL SURVEYOR
Certificate Number: **Gary G. Eidson 12641**
Ronald J. Eidson 3239
LSL Rel. W.O.: 18.11.0488 JWSC W.O.: 20.13.0006

Intent ☐ As Drilled ☒

API #
30-025-46147

Operator Name:
BTA OIL PRODUCERS, LLC

Property Name:
ROJO 7811 34-27 FEDERAL

Well Number
38H

Kick Off Point (KOP)

| | | | | | | | | | |
|-----------------------|---------------|-----------------|--------------|----------|-------------------------|-------------------|--------------|------------------|---------------|
| UL E | Section 34 | Township 25S | Range 33E | Lot E | Feet 2510 | From N/S NORTH | Feet 1275 | From E/W WEST | County LEA |
| Latitude 32.087370 | | | | | Longitude 103.564624 | | | NAD 83 | |

First Take Point (FTP)

| | | | | | | | | | |
|-----------------------|---------------|-----------------|--------------|----------|-------------------------|-------------------|-------------|------------------|---------------|
| UL E | Section 34 | Township 25S | Range 33E | Lot E | Feet 2510 | From N/S NORTH | Feet 380 | From E/W WEST | County LEA |
| Latitude 32.087921 | | | | | Longitude 103.567514 | | | NAD 83 | |

Last Take Point (LTP)

| | | | | | | | | | |
|-----------------------|---------------|-----------------|--------------|----------|-------------------------|-------------------|-------------|------------------|---------------|
| UL D | Section 27 | Township 25S | Range 33E | Lot D | Feet 330 | From N/S NORTH | Feet 380 | From E/W WEST | County LEA |
| Latitude 32.107880 | | | | | Longitude 103.567563 | | | NAD 83 | |

Is this well the defining well for the Horizontal Spacing Unit? ☒

Is this well an infill well? ☐

If infill is yes please provide API if available, Operator Name and well number for Defining well for Horizontal Spacing Unit.

API #

Operator Name:

Property Name:

Well Number

KZ 06/29/2018