

UNITED STATES
DEPARTMENT OF THE INTERIOR
BUREAU OF LAND MANAGEMENT

APPLICATION FOR PERMIT TO DRILL OR REENTER

FORM APPROVED
OMB No. 1004-0137
Expires: January 31, 2018

- 1a. Type of work: ☒ DRILL ☐ REENTER
1b. Type of Well: ☒ Oil Well ☐ Gas Well ☐ Other
1c. Type of Completion: ☐ Hydraulic Fracturing ☒ Single Zone ☐ Multiple Zone

2. Name of Operator
DEVON ENERGY PRODUCTION COMPANY LP

3a. Address
333 West Sheridan Avenue Oklahoma City OK 73102

3b. Phone No. (include area code)
(800)583-3866

4. Location of Well (Report location clearly and in accordance with any State requirements. *)

At surface SWSE / 328 FSL / 1542 FEL / LAT 32.196808 / LONG -103.6248109

At proposed prod. zone NWNE / 20 FNL / 2332 FEL / LAT 32.210396 / LONG -103.62735

14. Distance in miles and direction from nearest town or post office*

12. County or Parish
LEA

13. State
NM

15. Distance from proposed*
location to nearest
property or lease line, ft.
(Also to nearest drig. unit line, if any)
328 feet

16. No of acres in lease
680

17. Spacing Unit dedicated to this well
160

18. Distance from proposed location*
to nearest well, drilling, completed,
applied for, on this lease, ft.
215 feet

19. Proposed Depth
9600 feet / 14292 feet

20. BLM/BIA Bond No. in file
FED: NMB000801

21. Elevations (Show whether DF, KDB, RT, GL, etc.)
3551 feet

22. Approximate date work will start*
02/28/2021

23. Estimated duration
45 days

24. Attachments

The following, completed in accordance with the requirements of Onshore Oil and Gas Order No. 1, and the Hydraulic Fracturing rule per 43 CFR 3162.3-3 (as applicable)

1. Well plat certified by a registered surveyor.
2. A Drilling Plan.
3. A Surface Use Plan (if the location is on National Forest System Lands, the SUPO must be filed with the appropriate Forest Service Office).

4. Bond to cover the operations unless covered by an existing bond on file (see Item 20 above).
5. Operator certification.
6. Such other site specific information and/or plans as may be requested by the BLM.

25. Signature
(Electronic Submission)

Name (Printed/Typed)
Rebecca Deal / Ph: (405)228-8429

Date
08/02/2019

Title
Regulatory Compliance Professional

Approved by (Signature)
(Electronic Submission)

Name (Printed/Typed)
Cody Layton / Ph: (575)234-5959

Date
01/29/2020

Title
Assistant Field Manager Lands & Minerals

Office
CARLSBAD

Application approval does not warrant or certify that the applicant holds legal or equitable title to those rights in the subject lease which would entitle the applicant to conduct operations thereon.

Conditions of approval, if any, are attached.

Title 18 U.S.C. Section 1001 and Title 43 U.S.C. Section 1212, make it a crime for any person knowingly and willfully to make to any department or agency of the United States any false, fictitious or fraudulent statements or representations as to any matter within its jurisdiction.

BCP Rec 02/10/2020

Ka
02/19/2020

APPROVED WITH CONDITIONS
Approval Date: 01/29/2020

PECOS DISTRICT DRILLING CONDITIONS OF APPROVAL

OPERATOR'S NAME:	Devon Energy Production Company LP
LEASE NO.:	NMNM116574
WELL NAME & NO.:	Bell Lake 24 Fed 10H
SURFACE HOLE FOOTAGE:	328'S & 1542'E
BOTTOM HOLE FOOTAGE:	20'N & 2332'E
LOCATION:	Section 24, T.24 S., R.32 E., NMP
COUNTY:	Lea County, New Mexico

COA

H2S	<input checked="" type="checkbox"/> Yes	<input type="checkbox"/> No	
Potash	<input checked="" type="checkbox"/> None	<input type="checkbox"/> Secretary	<input type="checkbox"/> R-111-P
Cave/Karst Potential	<input checked="" type="checkbox"/> Low	<input type="checkbox"/> Medium	<input type="checkbox"/> High
Cave/Karst Potential	<input type="checkbox"/> Critical		
Variance	<input type="checkbox"/> None	<input checked="" type="checkbox"/> Flex Hose	<input type="checkbox"/> Other
Wellhead	<input type="checkbox"/> Conventional	<input type="checkbox"/> Multibowl	<input checked="" type="checkbox"/> Both
Other	<input type="checkbox"/> 4 String Area	<input type="checkbox"/> Capitan Reef	<input type="checkbox"/> WIPP
Other	<input checked="" type="checkbox"/> Fluid Filled	<input checked="" type="checkbox"/> Cement Squeeze	<input type="checkbox"/> Pilot Hole
Special Requirements	<input type="checkbox"/> Water Disposal	<input type="checkbox"/> COM	<input type="checkbox"/> Unit

A. HYDROGEN SULFIDE

A Hydrogen Sulfide (H2S) Drilling Plan shall be activated 500 feet prior to drilling into the **Delaware Mountain Group**. As a result, the Hydrogen Sulfide area must meet Onshore Order 6 requirements, which includes equipment and personnel/public protection items. If Hydrogen Sulfide is encountered, please provide measured values and formations to the BLM.

B. CASING

1. The 13-3/8 inch surface casing shall be set at approximately **1201 feet** (a minimum of **25 feet (Lea County)** into the Rustler Anhydrite and above the salt) and cemented to the surface.
 - a. If cement does not circulate to the surface, the appropriate BLM office shall be notified and a temperature survey utilizing an electronic type temperature survey with surface log readout will be used or a cement bond log shall be run to verify the top of the cement. Temperature survey will be run a minimum of six hours after pumping cement and ideally between 8-10 hours after completing the cement job.
 - b. Wait on cement (WOC) time for a primary cement job will be a minimum of 8

hours or 500 pounds compressive strength, whichever is greater. (This is to include the lead cement)

- c. Wait on cement (WOC) time for a remedial job will be a minimum of 4 hours after bringing cement to surface or 500 pounds compressive strength, whichever is greater.
- d. If cement falls back, remedial cementing will be done prior to drilling out that string.

Intermediate casing must be kept fluid filled to meet BLM minimum collapse requirement.

2. The minimum required fill of cement behind the 9-5/8 inch intermediate casing shall be set at approximately 4990 feet is:

Option 1 (Single Stage):

- Cement to surface. If cement does not circulate see B.1.a, c-d above.
Cement excess is less than 25%, more cement might be required.

Option 2:

Operator has proposed a DV tool, the depth may be adjusted as long as the cement is changed proportionally. The DV tool may be cancelled if cement circulates to surface on the first stage.

- a. First stage to DV tool: Cement to circulate. If cement does not circulate off the DV tool, contact the appropriate BLM office before proceeding with second stage cement job.
- b. Second stage above DV tool:
 - Cement to surface. If cement does not circulate, contact the appropriate BLM office.
Cement excess is less than 25%, more cement might be required.

Operator has proposed to pump down 13-3/8" X 9-5/8" annulus. Operator must run a CBL from TD of the 9-5/8" casing to surface. Submit results to BLM.

3. The minimum required fill of cement behind the 5-1/2 inch production casing is:
 - Cement should tie-back at least 200 feet into previous casing string.
Operator shall provide method of verification.
Cement excess is less than 25%, more cement might be required.

C. PRESSURE CONTROL

1. Variance approved to use flex line from BOP to choke manifold. Manufacturer's specification to be readily available. No external damage to flex line. Flex line to be installed as straight as possible (no hard bends).'
- 2.

Option 1:

- a. Minimum working pressure of the blowout preventer (BOP) and related equipment (BOPE) required for drilling below the surface casing shoe shall be **2000 (2M)** psi.
- b. Minimum working pressure of the blowout preventer (BOP) and related equipment (BOPE) required for drilling below the intermediate casing shoe shall be **3000 (3M)** psi.

Option 2:

1. Operator has proposed a multi-bowl wellhead assembly. This assembly will only be tested when installed on the surface casing. Minimum working pressure of the blowout preventer (BOP) and related equipment (BOPE) required for drilling below the surface casing shoe shall be **3000 (3M)** psi.
 - a. Wellhead shall be installed by manufacturer's representatives, submit documentation with subsequent sundry.
 - b. If the welding is performed by a third party, the manufacturer's representative shall monitor the temperature to verify that it does not exceed the maximum temperature of the seal.
 - c. Manufacturer representative shall install the test plug for the initial BOP test.
 - d. If the cement does not circulate and one inch operations would have been possible with a standard wellhead, the well head shall be cut off, cementing operations performed and another wellhead installed.
 - e. Whenever any seal subject to test pressure is broken, all the tests in OOGO2.III.A.2.i must be followed.

GENERAL REQUIREMENTS

The BLM is to be notified in advance for a representative to witness:

- a. Spudding well (minimum of 24 hours)
- b. Setting and/or Cementing of all casing strings (minimum of 4 hours)
- c. BOPE tests (minimum of 4 hours)

☒ Eddy County

Call the Carlsbad Field Office, 620 East Greene St., Carlsbad, NM 88220,
(575) 361-2822

☒ Lea County

Call the Hobbs Field Station, 414 West Taylor, Hobbs NM 88240, (575)
393-3612

1. Unless the production casing has been run and cemented or the well has been properly plugged, the drilling rig shall not be removed from over the hole without prior approval.
 - a. In the event the operator has proposed to drill multiple wells utilizing a skid/walking rig. Operator shall secure the wellbore on the current well, after installing and testing the wellhead, by installing a blind flange of like pressure rating to the wellhead and a pressure gauge that can be monitored while drilling is performed on the other well(s).
 - b. When the operator proposes to set surface casing with Spudder Rig
 - Notify the BLM when moving in and removing the Spudder Rig.
 - Notify the BLM when moving in the 2nd Rig. Rig to be moved in within 90 days of notification that Spudder Rig has left the location.
 - BOP/BOPE test to be conducted per Onshore Oil and Gas Order No. 2 as soon as 2nd Rig is rigged up on well.
2. Floor controls are required for 3M or Greater systems. These controls will be on the rig floor, unobstructed, readily accessible to the driller and will be operational at all times during drilling and/or completion activities. Rig floor is defined as the area immediately around the rotary table; the area immediately above the substructure on which the draw works are located, this does not include the dog house or stairway area.
3. The record of the drilling rate along with the GR/N well log run from TD to surface (horizontal well – vertical portion of hole) shall be submitted to the BLM office as well as all other logs run on the borehole 30 days from completion. If available, a digital copy of the logs is to be submitted in addition to the paper copies. The Rustler top and top and bottom of Salt are to be recorded on the Completion Report.

A. CASING

1. Changes to the approved APD casing program need prior approval if the items substituted are of lesser grade or different casing size or are Non-API. The Operator can exchange the components of the proposal with that of superior strength (i.e. changing from J-55 to N-80, or from 36# to 40#). Changes to the approved cement program need prior approval if the altered cement plan has less volume or strength or if the changes are substantial (i.e. Multistage tool, ECP, etc.). The initial wellhead installed on the well will remain on the well with spools used as needed.
2. Wait on cement (WOC) for Potash Areas: After cementing but before commencing any tests, the casing string shall stand cemented under pressure until both of the following conditions have been met: 1) cement reaches a minimum compressive strength of 500 psi for all cement blends, 2) until cement has been in place at least 24 hours. WOC time will be recorded in the driller's log. The casing integrity test can be done (prior to the cement setting up) immediately after bumping the plug.
3. Wait on cement (WOC) for Water Basin: After cementing but before commencing any tests, the casing string shall stand cemented under pressure until both of the following conditions have been met: 1) cement reaches a minimum compressive strength of 500 psi at the shoe, 2) until cement has been in place at least 8 hours. WOC time will be recorded in the driller's log. See individual casing strings for details regarding lead cement slurry requirements. The casing integrity test can be done (prior to the cement setting up) immediately after bumping the plug.
4. Provide compressive strengths including hours to reach required 500 pounds compressive strength prior to cementing each casing string. Have well specific cement details onsite prior to pumping the cement for each casing string.
5. No pea gravel permitted for remedial or fall back remedial without prior authorization from the BLM engineer.
6. On that portion of any well approved for a 5M BOPE system or greater, a pressure integrity test of each casing shoe shall be performed. Formation at the shoe shall be tested to a minimum of the mud weight equivalent anticipated to control the formation pressure to the next casing depth or at total depth of the well. This test shall be performed before drilling more than 20 feet of new hole.
7. If hardband drill pipe is rotated inside casing, returns will be monitored for metal. If metal is found in samples, drill pipe will be pulled and rubber protectors which have a larger diameter than the tool joints of the drill pipe will be installed prior to continuing drilling operations.
8. Whenever a casing string is cemented in the R-111-P potash area, the NMOCD requirements shall be followed.

B. PRESSURE CONTROL

1. All blowout preventer (BOP) and related equipment (BOPE) shall comply with well control requirements as described in Onshore Oil and Gas Order No. 2 and API RP 53 Sec. 17.
2. If a variance is approved for a flexible hose to be installed from the BOP to the choke manifold, the following requirements apply: The flex line must meet the requirements of API 16C. Check condition of flexible line from BOP to choke manifold, replace if exterior is damaged or if line fails test. Line to be as straight as possible with no hard bends and is to be anchored according to Manufacturer's requirements. The flexible hose can be exchanged with a hose of equal size and equal or greater pressure rating. Anchor requirements, specification sheet and hydrostatic pressure test certification matching the hose in service, to be onsite for review. These documents shall be posted in the company man's trailer and on the rig floor.
3. 5M or higher system requires an HCR valve, remote kill line and annular to match. The remote kill line is to be installed prior to testing the system and tested to stack pressure.
4. If the operator has proposed a multi-bowl wellhead assembly in the APD. The following requirements must be met:
 - a. Wellhead shall be installed by manufacturer's representatives, submit documentation with subsequent sundry.
 - b. If the welding is performed by a third party, the manufacturer's representative shall monitor the temperature to verify that it does not exceed the maximum temperature of the seal.
 - c. Manufacturer representative shall install the test plug for the initial BOP test.
 - d. Whenever any seal subject to test pressure is broken, all the tests in OOGO2.III.A.2.i must be followed.
 - e. If the cement does not circulate and one inch operations would have been possible with a standard wellhead, the well head shall be cut off, cementing operations performed and another wellhead installed.
5. The appropriate BLM office shall be notified a minimum of 4 hours in advance for a representative to witness the tests..
 - a. In a water basin, for all casing strings utilizing slips, these are to be set as soon as the crew and rig are ready and any fallback cement remediation has been done. The casing cut-off and BOP installation can be initiated four hours after installing the slips, which will be approximately six hours after bumping the plug. For those casing strings not using slips, the minimum wait time before cut-off is eight hours after bumping the plug. BOP/BOPE testing can begin after cut-off or once cement reaches 500 psi compressive strength (including lead when specified), whichever is greater. However, if the float does not

hold, cut-off cannot be initiated until cement reaches 500 psi compressive strength (including lead when specified).

- b. In potash areas, for all casing strings utilizing slips, these are to be set as soon as the crew and rig are ready and any fallback cement remediation has been done. For all casing strings, casing cut-off and BOP installation can be initiated at twelve hours after bumping the plug. However, **no tests** shall commence until the cement has had a minimum of 24 hours setup time, except the casing pressure test can be initiated immediately after bumping the plug (only applies to single stage cement jobs).
- c. The tests shall be done by an independent service company utilizing a test plug not a cup or J-packer. The operator also has the option of utilizing an independent tester to test without a plug (i.e. against the casing) pursuant to Onshore Order 2 with the pressure not to exceed 70% of the burst rating for the casing. Any test against the casing must meet the WOC time for water basin (8 hours) or potash (24 hours) or 500 pounds compressive strength, whichever is greater, prior to initiating the test (see casing segment as lead cement may be critical item).
- d. The test shall be run on a 5000 psi chart for a 2-3M BOP/BOP, on a 10000 psi chart for a 5M BOP/BOPE and on a 15000 psi chart for a 10M BOP/BOPE. If a linear chart is used, it shall be a one hour chart. A circular chart shall have a maximum 2 hour clock. If a twelve hour or twenty-four hour chart is used, tester shall make a notation that it is run with a two hour clock.
- e. The results of the test shall be reported to the appropriate BLM office.
- f. All tests are required to be recorded on a calibrated test chart. A copy of the BOP/BOPE test chart and a copy of independent service company test will be submitted to the appropriate BLM office.
- g. The BOP/BOPE test shall include a low pressure test from 250 to 300 psi. The test will be held for a minimum of 10 minutes if test is done with a test plug and 30 minutes without a test plug. This test shall be performed prior to the test at full stack pressure.
- h. BOP/BOPE must be tested by an independent service company within 500 feet of the top of the Wolfcamp formation if the time between the setting of the intermediate casing and reaching this depth exceeds 20 days. This test does not exclude the test prior to drilling out the casing shoe as per Onshore Order No. 2.

C. DRILLING MUD

Mud system monitoring equipment, with derrick floor indicators and visual and audio alarms, shall be operating before drilling into the Wolfcamp formation, and shall be used until production casing is run and cemented.

D. WASTE MATERIAL AND FLUIDS

All waste (i.e. drilling fluids, trash, salts, chemicals, sewage, gray water, etc.) created as a result of drilling operations and completion operations shall be safely contained and disposed of properly at a waste disposal facility. No waste material or fluid shall be disposed of on the well location or surrounding area.

Porto-johns and trash containers will be on-location during fracturing operations or any other crew-intensive operations.



U.S. Department of the Interior
BUREAU OF LAND MANAGEMENT

Operator Certification Data Report

02/06/2020

Operator Certification

I hereby certify that I, or someone under my direct supervision, have inspected the drill site and access route proposed herein; that I am familiar with the conditions which currently exist; that I have full knowledge of state and Federal laws applicable to this operation; that the statements made in this APD package are, to the best of my knowledge, true and correct; and that the work associated with the operations proposed herein will be performed in conformity with this APD package and the terms and conditions under which it is approved. I also certify that I, or the company I represent, am responsible for the operations conducted under this application. These statements are subject to the provisions of 18 U.S.C. 1001 for the filing of false statements.

NAME: Rebecca Deal

Signed on: 08/02/2019

Title: Regulatory Compliance Professional

Street Address: 333 West Sheridan Avenue

City: Oklahoma City

State: OK

Zip: 73102

Phone: (405)228-8429

Email address: Rebecca.Deal@dvn.com

Field Representative

Representative Name:

Street Address: 333 W. Sheridan Ave

City: OKC

State: OK

Zip: 73102

Phone: (405)552-6556

Email address: blake.richardson@dvn.com



U.S. Department of the Interior
BUREAU OF LAND MANAGEMENT

Application Data Report

02/06/2020

APD ID: 10400045252

Submission Date: 08/02/2019

Operator Name: DEVON ENERGY PRODUCTION COMPANY LP

Well Name: BELL LAKE 24 FED

Well Number: 10H

Well Type: OIL WELL

Well Work Type: Drill

[Show Final Text](#)

Section 1 - General

APD ID: 10400045252

Tie to previous NOS? N

Submission Date: 08/02/2019

BLM Office: CARLSBAD

User: Rebecca Deal

Title: Regulatory Compliance
Professional

Federal/Indian APD: FED

Is the first lease penetrated for production Federal or Indian? FED

Lease number: NMNM116574

Lease Acres: 680

Surface access agreement in place?

Allotted?

Reservation:

Agreement in place? NO

Federal or Indian agreement:

Agreement number:

Agreement name:

Keep application confidential? Y

Permitting Agent? NO

APD Operator: DEVON ENERGY PRODUCTION COMPANY LP

Operator letter of designation:

Operator Info

Operator Organization Name: DEVON ENERGY PRODUCTION COMPANY LP

Operator Address: 333 West Sheridan Avenue

Zip: 73102

Operator PO Box:

Operator City: Oklahoma City

State: OK

Operator Phone: (800)583-3866

Operator Internet Address:

Section 2 - Well Information

Well in Master Development Plan? NO

Master Development Plan name:

Well in Master SUPO? NO

Master SUPO name:

Well in Master Drilling Plan? NO

Master Drilling Plan name:

Well Name: BELL LAKE 24 FED

Well Number: 10H

Well API Number:

Field/Pool or Exploratory? Field and Pool

Field Name: WC-025 G-09
S263416B

Pool Name: UPPER
WOLFCAMP

Operator Name: DEVON ENERGY PRODUCTION COMPANY LP

Well Name: BELL LAKE 24 FED

Well Number: 10H

Is the proposed well in an area containing other mineral resources? NATURAL GAS,OIL

Is the proposed well in a Helium production area? N

Use Existing Well Pad? N

New surface disturbance?

Type of Well Pad: MULTIPLE WELL

Multiple Well Pad Name: Bell

Number: 5

Well Class: HORIZONTAL

Lake 24 Wellpad

Number of Legs: 1

Well Work Type: Drill

Well Type: OIL WELL

Describe Well Type:

Well sub-Type: INFILL

Describe sub-type:

Distance to town:

Distance to nearest well: 215 FT

Distance to lease line: 328 FT

Reservoir well spacing assigned acres Measurement: 160 Acres

Well plat: BELL_LAKE_24_FED_010H_C_102_20190802082618.pdf

Well work start Date: 02/28/2021

Duration: 45 DAYS

Section 3 - Well Location Table

Survey Type: RECTANGULAR

Describe Survey Type:

Datum: NAD83

Vertical Datum: NAVD88

Survey number:

Reference Datum: GROUND LEVEL

Wellbore	NS-Foot	NS Indicator	EW-Foot	EW Indicator	Twsp	Range	Section	Aliquot/Lot/Tract	Latitude	Longitude	County	State	Meridian	Lease Type	Lease Number	Elevation	MD	TVD	Will this well produce from this lease?
SHL Leg #1	328	FSL	154 2	FEL	24S	32E	24	Aliquot SWSE	32.19680 8	- 103.6248 109	LEA	NEW MEXI CO	NEW MEXI CO	F	NMNM 116574	355 1	0	0	Y
KOP Leg #1	378	FSL	233 2	FEL	24S	32E	24	Aliquot SWSE	32.19696	- 103.6273 64	LEA	NEW MEXI CO	NEW MEXI CO	F	NMNM 116574	- 547 6	907 7	902 7	Y
PPP Leg #1-1	100	FSL	233 2	FEL	24S	32E	24	Aliquot SWSE	32.19617 8	- 103.6273 65	LEA	NEW MEXI CO	NEW MEXI CO	F	NMNM 116574	- 547 6	907 7	902 7	Y

Operator Name: DEVON ENERGY PRODUCTION COMPANY LP

Well Name: BELL LAKE 24 FED

Well Number: 10H

Wellbore	NS-Foot	NS Indicator	EW-Foot	EW Indicator	Twsp	Range	Section	Aliquot/Lot/Tract	Latitude	Longitude	County	State	Meridian	Lease Type	Lease Number	Elevation	MD	TVD	Will this well produce from this lease?
EXIT Leg #1	100	FNL	233 2	FEL	24S	32E	24	Aliquot NWNE	32.21017 6	- 103.6273 51	LEA	NEW MEXI CO	NEW MEXI CO	F	NMNM 116574	- 604 9	142 12	960 0	Y
BHL Leg #1	20	FNL	233 2	FEL	24S	32E	24	Aliquot NWNE	32.21039 6	- 103.6273 5	LEA	NEW MEXI CO	NEW MEXI CO	F	NMNM 116574	- 604 9	142 92	960 0	Y



U.S. Department of the Interior
BUREAU OF LAND MANAGEMENT

Drilling Plan Data Report

02/06/2020

APD ID: 10400045252

Submission Date: 08/02/2019

Operator Name: DEVON ENERGY PRODUCTION COMPANY LP

Well Name: BELL LAKE 24 FED

Well Number: 10H

Well Type: OIL WELL

Well Work Type: Drill

[Show Final Text](#)

Section 1 - Geologic Formations

Formation ID	Formation Name	Elevation	True Vertical Depth	Measured Depth	Lithologies	Mineral Resources	Producing Formation
507146	—	3576	0	0	OTHER : SURFACE	NONE	N
507147	RUSTLER	2400	1176	1176	ANHYDRITE	NONE	N
507148	SALADO	2076	1500	1500	SALT	NONE	N
507149	BASE OF SALT	-1400	4976	4976	SANDSTONE	NATURAL GAS, OIL	N
507150	BELL CANYON	-1439	5015	5015	SANDSTONE	NATURAL GAS, OIL	N
507151	CHERRY CANYON	-2369	5945	5945	SANDSTONE	NATURAL GAS, OIL	N
507152	BRUSHY CANYON	-3885	7461	7461	SANDSTONE	NATURAL GAS, OIL	N
507158	BONE SPRING LIME	-5341	8917	8917	LIMESTONE	NATURAL GAS, OIL	N
507159	UPPER AVALON SHALE	-5551	9127	9127	SHALE	NATURAL GAS, OIL	Y

Section 2 - Blowout Prevention

Pressure Rating (PSI): 5M

Rating Depth: 4990

Equipment: BOP/BOPE will be installed per Onshore Oil & Gas Order #2 requirements prior to drilling below surface casing, a 13-5/8" BOP/BOPE system with a minimum rating of 5M will be installed on the wellhead system. BOP/BOPE will be tested by an independent service company per Onshore Oil & Gas Order #2 requirements and MASP (Maximum Anticipated Surface Pressure) calculations. If the system is upgraded, all the components installed will be functional and tested.

Requesting Variance? YES

Variance request: A variance is requested for the use of a flexible choke line from the BOP stack to the choke manifold. See attached for specs for hydrostatic test chart.

Testing Procedure: A multibowl wellhead may be used. The BOP will be tested per Onshore Order #2 after installation on the surface casing which will cover testing requirements for a maximum of 30 days. If any seal subject to test pressure is broken the system must be tested.

Choke Diagram Attachment:

5M_BOPE__CK_20190730113129.pdf

BOP Diagram Attachment:

Operator Name: DEVON ENERGY PRODUCTION COMPANY LP

Well Name: BELL LAKE 24 FED

Well Number: 10H

5M_BOPE__CK_20190730113129.pdf

5M_BOPE__CK_20190730113136.pdf

Pressure Rating (PSI): 5M

Rating Depth: 9600

Equipment: BOP/BOPE will be installed per Onshore Oil & Gas Order #2 requirements prior to drilling below intermediate casing, a 13-5/8" BOP/BOPE system with a minimum rating of 5M will be installed on the wellhead system. BOP/BOPE will be tested by an independent service company per Onshore Oil & Gas Order #2 requirements and MASP (Maximum Anticipated Surface Pressure) calculations. If the system is upgraded, all the components installed will be functional and tested.

Requesting Variance? YES

Variance request: A variance is requested for the use of a flexible choke line from the BOP stack to the choke manifold. See attached for specs for hydrostatic test chart.

Testing Procedure: A multibowl wellhead may be used. The BOP will be tested per Onshore Order #2 after installation on the surface casing which will cover testing requirements for a maximum of 30 days. If any seal subject to test pressure is broken the system must be tested.

Choke Diagram Attachment:

5M_BOPE_20190731125816.pdf

BOP Diagram Attachment:

5M_BOPE_20190731125823.pdf

Section 3 - Casing

Casing ID	String Type	Hole Size	Csg Size	Condition	Standard	Tapered String	Top Set MD	Bottom Set MD	Top Set TVD	Bottom Set TVD	Top Set MSL	Bottom Set MSL	Calculated casing length MD	Grade	Weight	Joint Type	Collapse SF	Burst SF	Joint SF Type	Joint SF	Body SF Type	Body SF
1	SURFACE	17.5	13.375	NEW	API	N	0	1201	0	1201	3551	2350	1201	H-40	48	ST&C	1.125	1	BUOY	1.6	BUOY	1.6
2	INTERMEDIATE	12.25	9.625	NEW	API	N	0	4990	0	4990	3576	-1439	4990	J-55	40	OTHER - BTC	1.125	1	BUOY	1.6	BUOY	1.6
3	PRODUCTION	8.75	5.5	NEW	API	N	0	14292	0	9600	3576	-6049	14292	P-110	17	OTHER - BTC	1.125	1	BUOY	1.6	BUOY	1.6

Casing Attachments

Operator Name: DEVON ENERGY PRODUCTION COMPANY LP

Well Name: BELL LAKE 24 FED

Well Number: 10H

Casing Attachments

Casing ID: 1 String Type: SURFACE

Inspection Document:

Spec Document:

Tapered String Spec:

Casing Design Assumptions and Worksheet(s):

Surf_Csg_Ass_20190730113310.pdf

Casing ID: 2 String Type: INTERMEDIATE

Inspection Document:

Spec Document:

Tapered String Spec:

Casing Design Assumptions and Worksheet(s):

Int_Csg_Ass_20190730113522.pdf

Casing ID: 3 String Type: PRODUCTION

Inspection Document:

Spec Document:

Tapered String Spec:

Casing Design Assumptions and Worksheet(s):

Prod_Csg_Ass_20190730113701.pdf

Section 4 - Cement

Operator Name: DEVON ENERGY PRODUCTION COMPANY LP

Well Name: BELL LAKE 24 FED

Well Number: 10H

String Type	Lead/Tail	Stage Tool Depth	Top MD	Bottom MD	Quantity(sx)	Yield	Density	Cu Ft	Excess%	Cement type	Additives
SURFACE	Lead		0	1201	908	1.44	13.2	1307	50	C	Class C + adds

INTERMEDIATE	Lead		0	4990	548	3.27	9	1791	30	C	Class C + adds
INTERMEDIATE	Tail		4990	4990	154	1.44	13.2	221.5	30	C	Class C + adds
PRODUCTION	Lead		4990	9075	391	3.27	9	1279	25	TUNED	Class C + adds
PRODUCTION	Tail		9077	1429 2	1006	1.44	13.2	1449	25	H	(50:50) Clas H Cement: Poz (Fly Ash) + 0.5% bwoc HALAD-344 + 0.4% bwoc CFR-3 + 0.2% BWOC HR-601 + 2% bwoc Bentonite

Section 5 - Circulating Medium

Mud System Type: Closed

Will an air or gas system be Used? NO

Description of the equipment for the circulating system in accordance with Onshore Order #2:

Diagram of the equipment for the circulating system in accordance with Onshore Order #2:

Describe what will be on location to control well or mitigate other conditions: Sufficient mud materials to maintain mud properties and meet minimum lost circulation and weight increase requirements will be kept on location at all times.

Describe the mud monitoring system utilized: PVT/Pason/Visual Monitoring

Circulating Medium Table

Top Depth	Bottom Depth	Mud Type	Min Weight (lbs/gal)	Max Weight (lbs/gal)	Density (lbs/cu ft)	Gel Strength (lbs/100 sqft)	PH	Viscosity (CP)	Salinity (ppm)	Filtration (cc)	Additional Characteristics
0	1201	WATER-BASED MUD	8.5	9				2			

Operator Name: DEVON ENERGY PRODUCTION COMPANY LP

Well Name: BELL LAKE 24 FED

Well Number: 10H

Top Depth	Bottom Depth	Mud Type	Min Weight (lbs/gal)	Max Weight (lbs/gal)	Density (lbs/cu ft)	Gel Strength (lbs/100 sqft)	PH	Viscosity (CP)	Salinity (ppm)	Filtration (cc)	Additional Characteristics
1201	4990	SALT SATURATED	10	10.5				2			
4990	1429 2	WATER-BASED MUD	8.5	9				12			

Section 6 - Test, Logging, Coring

List of production tests including testing procedures, equipment and safety measures:

Will run GRMWD from TD to from KOP. Cement bond logs will be run in vertical to determine top of cement. Stated logs run will be in the Completion Report and submitted to the BLM.

List of open and cased hole logs run in the well:

CALIPER, CEMENT BOND LOG, DIRECTIONAL SURVEY, GAMMA RAY LOG, MUD LOG/GEOLOGICAL LITHOLOGY LOG,

Coring operation description for the well:

N/A

Section 7 - Pressure

Anticipated Bottom Hole Pressure: 4493

Anticipated Surface Pressure: 2381

Anticipated Bottom Hole Temperature(F): 134

Anticipated abnormal pressures, temperatures, or potential geologic hazards? NO

Describe:

Contingency Plans geohazards description:

Contingency Plans geohazards attachment:

Hydrogen Sulfide drilling operations plan required? YES

Hydrogen sulfide drilling operations plan:

Bell_Lake_24_Fed_010H_H2S_Plan_20190802084818.pdf

Operator Name: DEVON ENERGY PRODUCTION COMPANY LP

Well Name: BELL LAKE 24 FED

Well Number: 10H

Section 8 - Other Information

Proposed horizontal/directional/multi-lateral plan submission:

Bell_Lake_24_Fed_10H_Plot_20190802084831.pdf

Bell_Lake_24_Fed_10H_Dir_Svy_20190802084831.pdf

Other proposed operations facets description:

DIRECTIONAL SURVEY

PLOT

DRILLING PLAN

SPEC SHEETS

MB WELLHEAD

MB VERBIAGE

CLOSED LOOP DOC

SPUDDER RIG REQUEST

GAS CAPTURE PLAN

ANNULAR VARIANCE REQUEST DOC

COFLEX DOC

Other proposed operations facets attachment:

13.375_48_H40_20190730115538.pdf

5.5_17_P_110_BTC_20190730115614.pdf

9.625_40lb_J_55_20190731130243.pdf

Clsd_Loop_20190730115304.pdf

MB_Verb_5M_20190731130323.pdf

MB_Wellhd_5M_13.375_9.625_20190731130204.pdf

Spudder_Rig_Info_20190730115304.pdf

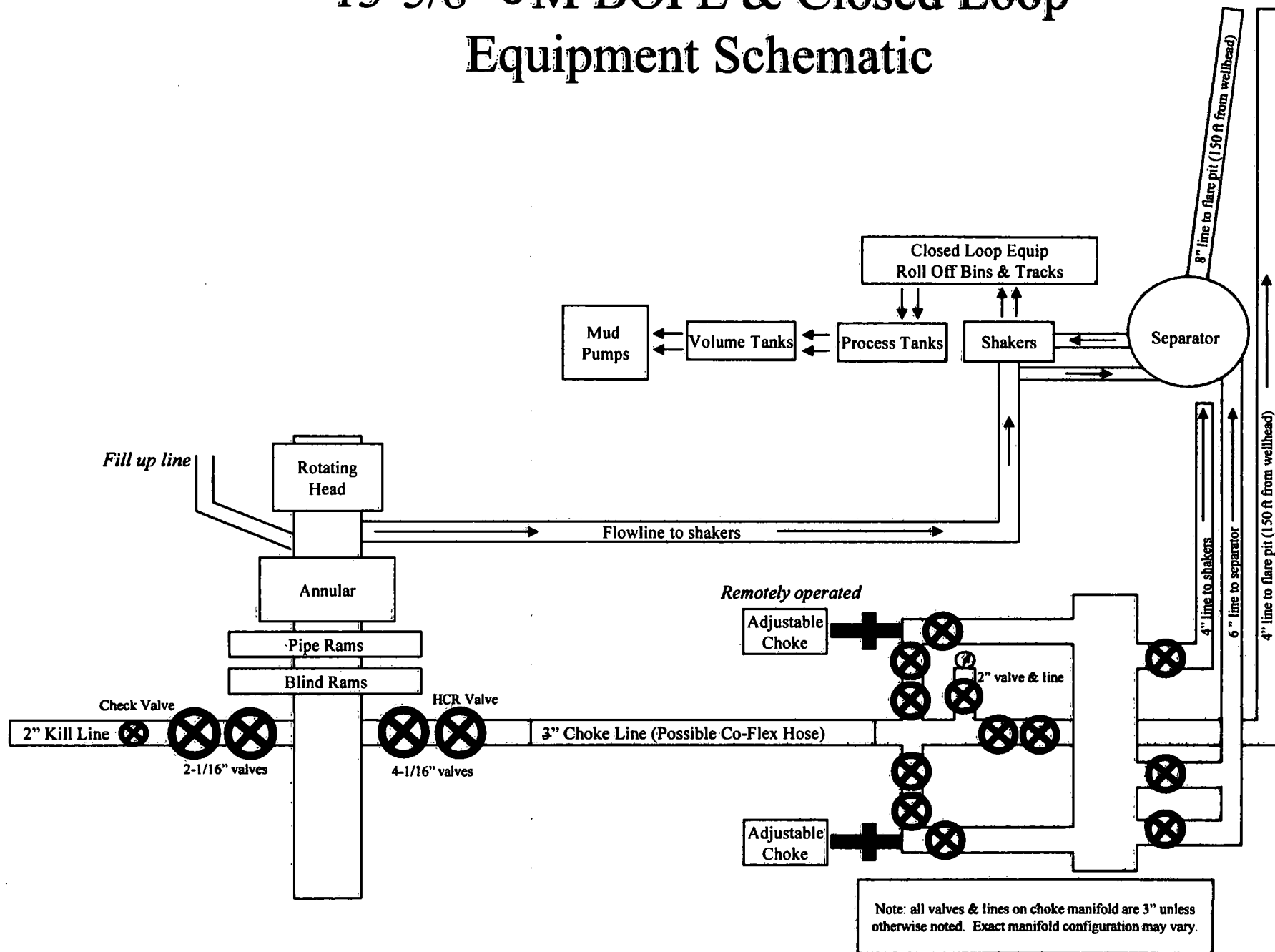
Bell_Lake_24_Fed_10H_Drlg_Plan_20190802084844.pdf

Bell_Lake_WP5_GCP_Form_20190802084905.pdf

Other Variance attachment:

Co_flex_20190730115411.pdf

13-5/8" 5M BOPE & Closed Loop Equipment Schematic





**Devon Energy Center
333 West Sheridan Avenue
Oklahoma City, Oklahoma 73102-5015**

Hydrogen Sulfide (H₂S) Contingency Plan

For

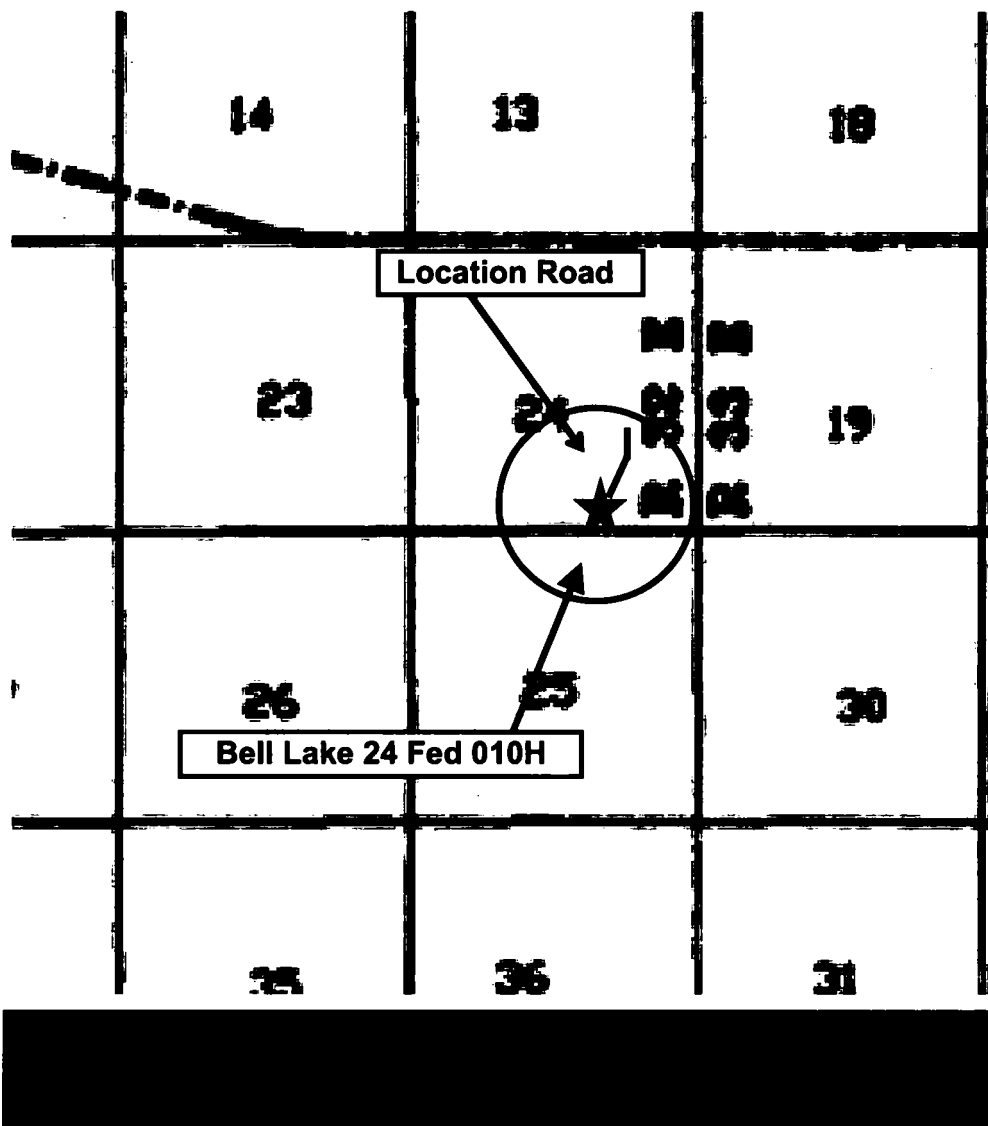
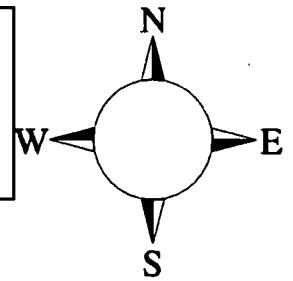
Bell Lake 24 Fed 010H

**Sec-24 T-24S R-32E
328' FSL & 1542 FEL
LAT. = 32.196808' N (NAD83)
LONG = 103.624811' W**

Lea County NM

Bell Lake 24 Fed 010H

This is an open drilling site. H₂S monitoring equipment and emergency response equipment will be used within 500' of zones known to contain H₂S, including warning signs, wind indicators and H₂S monitor.



Escape

Crews shall escape upwind of escaping gas in the event of an emergency release of gas. Escape can be facilitated from the location entrance road. Crews should then block the entrance to the location from the lease road so as not to allow anyone traversing into a hazardous area. The blockade should be at a safe distance outside of the ROE. There are no homes or buildings in or near the ROE.

Assumed 100 ppm ROE = 3000'

100 ppm H₂S concentration shall trigger activation of this plan.

Emergency Procedures

In the event of a release of gas containing H₂S, the first responder(s) must

- **Isolate the area and prevent entry by other persons into the 100 ppm ROE.**
- **Evacuate any public places encompassed by the 100 ppm ROE.**
- **Be equipped with H₂S monitors and air packs in order to control the release.**
- **Use the "buddy system" to ensure no injuries occur during the response**
- **Take precautions to avoid personal injury during this operation.**
- **Contact operator and/or local officials to aid in operation. See list of phone numbers attached.**
- **Have received training in the**
 - **Detection of H₂S, and**
 - **Measures for protection against the gas,**
 - **Equipment used for protection and emergency response.**

Ignition of Gas Source

Should control of the well be considered lost and ignition considered, take care to protect against exposure to Sulfur Dioxide (SO₂). Intentional ignition must be coordinated with the NMOCD and local officials. Additionally the NM State Police may become involved. NM State Police shall be the Incident Command on scene of any major release. Take care to protect downwind whenever there is an ignition of the gas

Characteristics of H₂S and SO₂

Common Name	Chemical Formula	Specific Gravity	Threshold Limit	Hazardous Limit	Lethal Concentration
Hydrogen Sulfide	H₂S	1.189 Air = 1	10 ppm	100 ppm/hr	600 ppm
Sulfur Dioxide	SO₂	2.21 Air = 1	2 ppm	N/A	1000 ppm

Contacting Authorities

Devon Energy Corp. personnel must liaison with local and state agencies to ensure a proper response to a major release. Additionally, the OCD must be notified of the release as soon as possible but no later than 4 hours. Agencies will ask for information such as type and volume of release, wind direction, location of release, etc. Be prepared with all information available. The following call list of essential and potential responders has been prepared for use during a release. Devon Energy Corp. Company response must be in coordination with

Hydrogen Sulfide Drilling Operation Plan

I. HYDROGEN SULFIDE (H₂S) TRAINING

All personnel, whether regularly assigned, contracted, or employed on an unscheduled basis, will receive training from a qualified instructor in the following areas prior to commencing drilling operations on this well:

1. The hazards and characteristics of hydrogen sulfide (H₂S)
2. The proper use and maintenance of personal protective equipment and life support systems.
3. The proper use of H₂S detectors, alarms, warning systems, briefing areas, evacuation procedures, and prevailing winds.
4. The proper techniques for first aid and rescue procedures.

In addition, supervisory personnel will be trained in the following areas:

1. The effects of H₂S metal components. If high tensile tubulars are to be used, personnel will be trained in their special maintenance requirements.
2. Corrective action and shut-in procedures when drilling or reworking a well and blowout prevention and well control procedures.
3. The contents and requirements of the H₂S Drilling Operations Plan and Public Protection Plan.

There will be an initial training session just prior to encountering a known or probable H₂S zone (within 3 days or 500 feet) and weekly H₂S and well control drills for all personnel in each crew. The initial training session shall include a review of the site specific H₂S Drilling Operations Plan and the Public Protection Plan.

II. HYDROGEN SULFIDE TRAINING

Note: All H₂S safety equipment and systems will be installed, tested, and operational when drilling reaches a depth of 500 feet above, or three days prior to penetrating the first zone containing or reasonably expected to contain H₂S.

1. Well Control Equipment

- A. Flare line
- B. Choke manifold – Remotely Operated
- C. Blind rams and pipe rams to accommodate all pipe sizes with properly sized closing unit
- D. Auxiliary equipment may include if applicable: annular preventer and rotating head.
- E. Mud/Gas Separator

2. Protective equipment for essential personnel:

30-minute SCBA units located at briefing areas, as indicated on well site diagram, with escape units available in the top doghouse. As it may be difficult to communicate audibly while wearing these units, hand signals shall be utilized.

3. H₂S detection and monitoring equipment:

Portable H₂S monitors positioned on location for best coverage and response. These units have warning lights which activate when H₂S levels reach 10 ppm and audible sirens which activate at 15 ppm. Sensor locations:

- Bell nipple
- Possum Belly/Shale shaker
- Rig floor
- Choke manifold
- Cellar

Visual warning systems:

- A. Wind direction indicators as shown on well site diagram
- B. Caution/ Danger signs shall be posted on roads providing direct access to locations. Signs will be painted a high visibility yellow with black lettering of sufficient size to be reasonable distance from the immediate location. Bilingual signs will be used when appropriate.

4. Mud program:

The mud program has been designed to minimize the volume of H₂S circulated to surface. Proper mud weight, safe drilling practices and the use of H₂S scavengers will minimize hazards when penetrating H₂S bearing zones.

5. Metallurgy:

- A. All drill strings, casings, tubing, wellhead, blowout preventer, drilling spool, kill lines, choke manifold lines, and valves shall be H₂S trim.
- B. All elastomers used for packing and seals shall be H₂S trim.

6. Communication:

- A. Company personnel have/use cellular telephones in the field.
- B. Land line (telephone) communications at Office

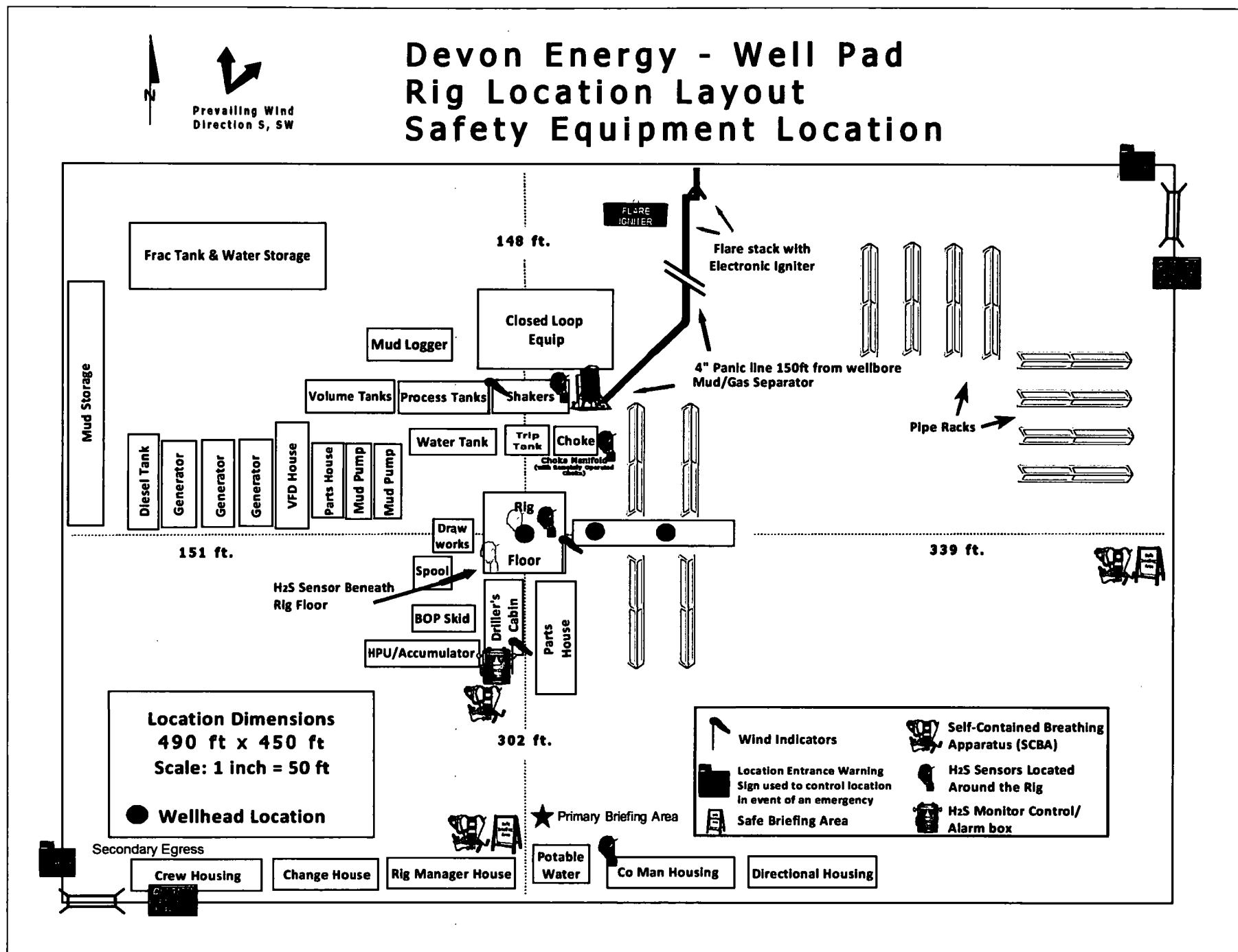
7. Well testing:

- A. Drill stem testing will be performed with a minimum number of personnel in the immediate vicinity, which are necessary to safety and adequately conduct the test. The drill stem testing will be conducted during daylight hours and formation fluids will not be flowed to the surface. All drill-stem-testing operations conducted in an H₂S environment will use the closed chamber method of testing.
- B. There will be no drill stem testing.

<u>Devon Energy Corp. Company Call List</u>		
Drilling Supervisor – Basin – Mark Kramer		405-823-4796
EHS Professional – Laura Wright		405-439-8129
<u>Agency Call List</u>		
<u>Lea County (575)</u>	Hobbs	
	Lea County Communication Authority	393-3981
	State Police	392-5588
	City Police	397-9265
	Sheriff's Office	393-2515
	Ambulance	911
	Fire Department	397-9308
	LEPC (Local Emergency Planning Committee)	393-2870
	NMOCD	393-6161
	US Bureau of Land Management	393-3612
<u>Eddy County (575)</u>	Carlsbad	
	State Police	885-3137
	City Police	885-2111
	Sheriff's Office	887-7551
	Ambulance	911
	Fire Department	885-3125
	LEPC (Local Emergency Planning Committee)	887-3798
	US Bureau of Land Management	887-6544
	NM Emergency Response Commission (Santa Fe)	(505) 476-9600
	24 HR	(505) 827-9126
	National Emergency Response Center	(800) 424-8802
	National Pollution Control Center: Direct	(703) 872-6000
	For Oil Spills	(800) 280-7118
	Emergency Services	
	Wild Well Control	(281) 784-4700
	Cudd Pressure Control	(915) 699-0139 (915) 563-3356
	Halliburton	(575) 746-2757
	B. J. Services	(575) 746-3569
<u>Give GPS position:</u>	Native Air – Emergency Helicopter – Hobbs (TX & NM)	(800) 642-7828
	Flight For Life - Lubbock, TX	(806) 743-9911
	Aerocare - Lubbock, TX	(806) 747-8923
	Med Flight Air Amb - Albuquerque, NM	(575) 842-4433
	Lifeguard Air Med Svc. Albuquerque, NM	(800) 222-1222
	Poison Control (24/7)	(575) 272-3115
	Oil & Gas Pipeline 24 Hour Service	(800) 364-4366
	NOAA – Website - www.nhc.noaa.gov	

Prepared in conjunction with
Dave Small





Devon Energy

WELL DETAILS: Bell Lake 24 Fed 10H

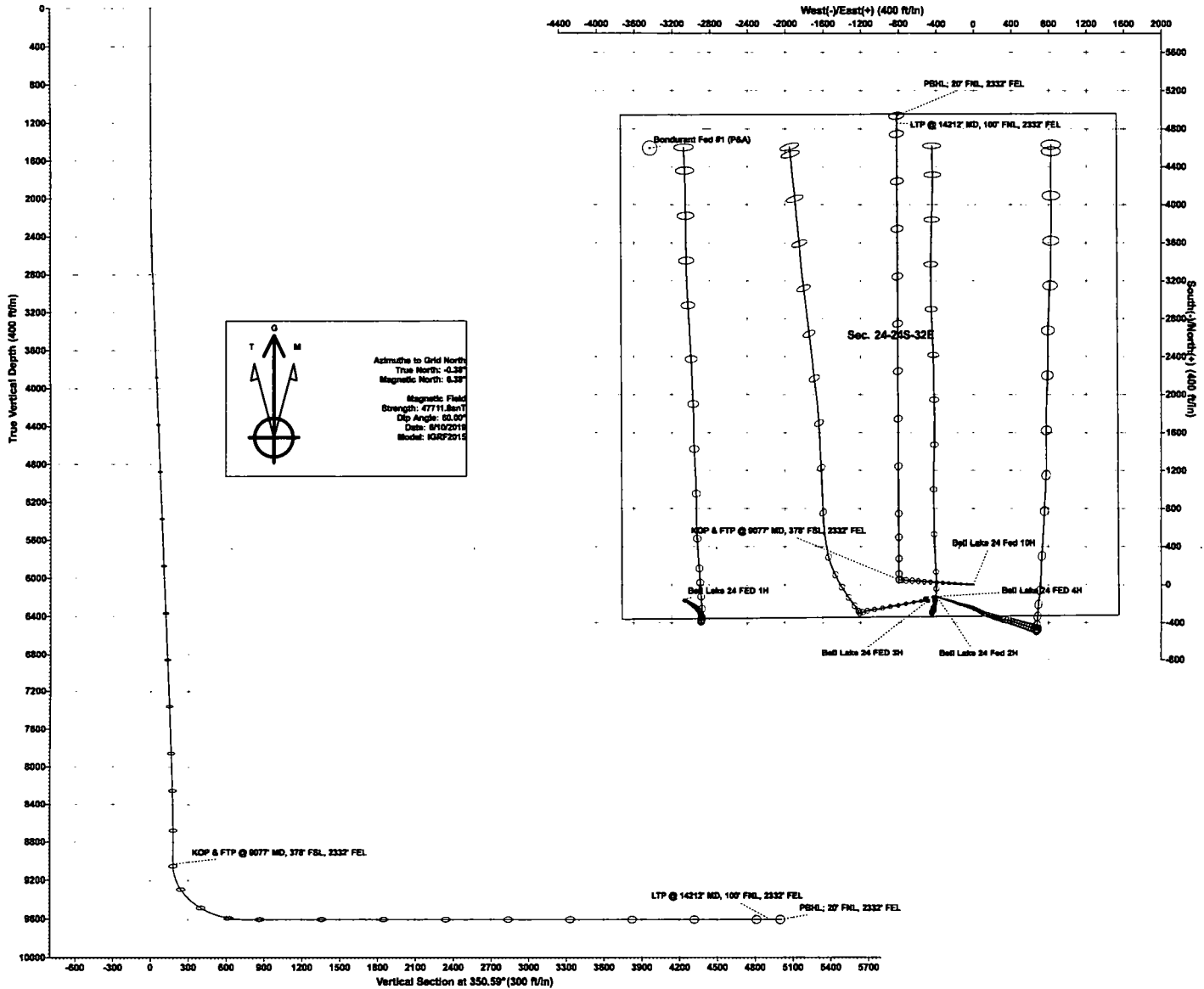
RKB @ 3575.70ft
3550.70

Northing 436055.27 Easting 760502.98 Latitude 32.196808 Longitude -103.624811

SECTION DETAILS Permit Plan 1

MD	Inc	Azi	TVD	+N/-S	+E/-W	Dleg	Vsect	Annotation
0.00	0.00	0.00	0.00	0.00	0.00	0.00	0.00	
2000.00	0.00	0.00	2000.00	0.00	-0.00	0.00	0.00	
2744.75	7.45	273.62	2742.66	3.05	-48.24	1.00	10.89	
8230.27	7.45	273.62	8181.89	47.98	-757.84	0.00	171.16	
8726.77	0.00	0.00	8677.00	50.00	-790.00	1.50	178.42	
9076.81	0.00	0.00	9027.04	50.00	-790.00	0.00	178.42	KOP & FTP @ 9077' MD, 378' FSL, 2332' FEL
9976.81	90.00	359.67	9800.00	822.95	-793.27	10.00	744.21	
14291.89	80.00	359.67	9600.00	4837.98	-817.92	0.00	5005.24	PBHL; 20' FNL, 2332' FEL

devon



WCDSC Permian NM

Lea County (NAD83 New Mexico East)

Sec 24-24S-32E

Bell Lake 24 Fed 10H

Wellbore #1

Plan: Permit Plan 1

Standard Planning Report - Geographic

11 June, 2019

Planning Report - Geographic

Database:	EDM r5000.141_Prod US	Local Co-ordinate Reference	Well Bell Lake 24 Fed 10H
Company:	WCDSC Permian NM	TVD Reference:	RKB @ 3575.70ft
Project:	Lea County (NAD83 New Mexico East)	MD Reference:	RKB @ 3575.70ft
Site:	Sec 24-24S-32E	North Reference:	Grid
Well:	Bell Lake 24 Fed 10H	Survey Calculation Method:	Minimum Curvature
Wellbore:	Wellbore #1		
Design:	Permit Plan 1		

Project	Lea County (NAD83 New Mexico East)		
Map System:	US State Plane 1983	System Datum:	Mean Sea Level
Geo Datum:	North American Datum 1983		
Map Zone:	New Mexico Eastern Zone		

Site		Sec 24-24S-32E			
Site Position:		Northing:	-0.83 usft	Latitude:	30.988439
From:	Map	Easting:	-99.96 usft	Longitude:	-106.061149
Position Uncertainty:	0.00 ft	Slot Radius:	13-3/16 "	Grid Convergence:	-0.89

Well	Bell Lake 24 Fed 10H					
Well Position	+N/-S	0.00 ft	Northing:	436,055.27 usft	Latitude:	32.196808
	+E/-W	0.00 ft	Easting:	760,502.98 usft	Longitude:	-103.624811
Position Uncertainty		0.50 ft	Wellhead Elevation:		Ground Level:	3,550.70 ft

Wellbore	Wellbore #1				
Magnetics	Model Name	Sample Date	Declination	Dip Angle	Field Strength
			(°)	(°)	(nT)
	IGRF2015	6/10/2019	6.76	60.00	47,711.89725335

Design	Permit Plan 1			
Audit Notes:				
Version:	Phase:	PROTOTYPE	Tie On Depth:	0.00
Vertical Section:	Depth From (TVD)	+N/-S	+E/-W	Direction
	(ft)	(ft)	(ft)	(°)
	0.00	0.00	0.00	350.59

Plan Survey Tool Program	Date 6/10/2019			
Depth From	Depth To	Survey (Wellbore)	Tool Name	Remarks
(ft)	(ft)			
1	0.00	14,291.89 Permit Plan 1 (Wellbore #1)	MWD+HDGM	
			OWSG MWD + HDGM	

Plan Sections										
Measured	Inclination	Azimuth	Vertical	+N/-S	+E/-W	Dogleg	Build	Turn	TFO	Target
Depth	(°)	(°)	Depth	(ft)	(ft)	Rate	Rate	Rate	(°)	
(ft)			(ft)			(°/100usft)	(°/100usft)	(°/100usft)		
0.00	0.00	0.00	0.00	0.00	0.00	0.00	0.00	0.00	0.00	
2,000.00	0.00	0.00	2,000.00	0.00	0.00	0.00	0.00	0.00	0.00	
2,744.75	7.45	273.62	2,742.66	3.05	-48.24	1.00	1.00	0.00	273.62	
8,230.27	7.45	273.62	8,181.89	47.96	-757.84	0.00	0.00	0.00	0.00	
8,726.77	0.00	0.00	8,677.00	50.00	-790.00	1.50	-1.50	0.00	180.00	
9,076.81	0.00	0.00	9,027.04	50.00	-790.00	0.00	0.00	0.00	0.00	
9,976.81	90.00	359.67	9,600.00	622.95	-793.27	10.00	10.00	0.00	359.67	PBHL - Bell Lake 24 F
14,291.89	90.00	359.67	9,600.00	4,937.96	-817.92	0.00	0.00	0.00	0.00	PBHL - Bell Lake 24 F

Planning Report - Geographic

Database:	EDM r5000.141_Prod US	Local Co-ordinate Reference	Well Bell Lake 24 Fed 10H
Company:	WCDSC Permian NM	TVD Reference:	RKB @ 3575.70ft
Project:	Lea County (NAD83 New Mexico East)	MD Reference:	RKB @ 3575.70ft
Site:	Sec 24-24S-32E	North Reference:	Grid
Well:	Bell Lake 24 Fed 10H	Survey Calculation Method:	Minimum Curvature
Wellbore:	Wellbore #1		
Design:	Permit Plan 1		

Planned Survey									
Measured Depth (ft)	Inclination (°)	Azimuth (°)	Vertical Depth (ft)	+N/-S (ft)	+E/-W (ft)	Map Northing (usft)	Map Easting (usft)	Latitude	Longitude
0.00	0.00	0.00	0.00	0.00	0.00	436,055.27	760,502.98	32.196808	-103.624811
100.00	0.00	0.00	100.00	0.00	0.00	436,055.27	760,502.98	32.196808	-103.624811
200.00	0.00	0.00	200.00	0.00	0.00	436,055.27	760,502.98	32.196808	-103.624811
300.00	0.00	0.00	300.00	0.00	0.00	436,055.27	760,502.98	32.196808	-103.624811
400.00	0.00	0.00	400.00	0.00	0.00	436,055.27	760,502.98	32.196808	-103.624811
500.00	0.00	0.00	500.00	0.00	0.00	436,055.27	760,502.98	32.196808	-103.624811
600.00	0.00	0.00	600.00	0.00	0.00	436,055.27	760,502.98	32.196808	-103.624811
700.00	0.00	0.00	700.00	0.00	0.00	436,055.27	760,502.98	32.196808	-103.624811
800.00	0.00	0.00	800.00	0.00	0.00	436,055.27	760,502.98	32.196808	-103.624811
900.00	0.00	0.00	900.00	0.00	0.00	436,055.27	760,502.98	32.196808	-103.624811
1,000.00	0.00	0.00	1,000.00	0.00	0.00	436,055.27	760,502.98	32.196808	-103.624811
1,100.00	0.00	0.00	1,100.00	0.00	0.00	436,055.27	760,502.98	32.196808	-103.624811
1,200.00	0.00	0.00	1,200.00	0.00	0.00	436,055.27	760,502.98	32.196808	-103.624811
1,300.00	0.00	0.00	1,300.00	0.00	0.00	436,055.27	760,502.98	32.196808	-103.624811
1,400.00	0.00	0.00	1,400.00	0.00	0.00	436,055.27	760,502.98	32.196808	-103.624811
1,500.00	0.00	0.00	1,500.00	0.00	0.00	436,055.27	760,502.98	32.196808	-103.624811
1,600.00	0.00	0.00	1,600.00	0.00	0.00	436,055.27	760,502.98	32.196808	-103.624811
1,700.00	0.00	0.00	1,700.00	0.00	0.00	436,055.27	760,502.98	32.196808	-103.624811
1,800.00	0.00	0.00	1,800.00	0.00	0.00	436,055.27	760,502.98	32.196808	-103.624811
1,900.00	0.00	0.00	1,900.00	0.00	0.00	436,055.27	760,502.98	32.196808	-103.624811
2,000.00	0.00	0.00	2,000.00	0.00	0.00	436,055.27	760,502.98	32.196808	-103.624811
2,100.00	1.00	273.62	2,099.99	0.06	-0.87	436,055.32	760,502.11	32.196809	-103.624814
2,200.00	2.00	273.62	2,199.96	0.22	-3.48	436,055.49	760,499.49	32.196809	-103.624822
2,300.00	3.00	273.62	2,299.86	0.50	-7.84	436,055.77	760,495.14	32.196810	-103.624837
2,400.00	4.00	273.62	2,399.68	0.88	-13.93	436,056.15	760,489.05	32.196811	-103.624856
2,500.00	5.00	273.62	2,499.37	1.38	-21.76	436,056.65	760,481.22	32.196813	-103.624882
2,600.00	6.00	273.62	2,598.90	1.98	-31.32	436,057.25	760,471.65	32.196814	-103.624912
2,700.00	7.00	273.62	2,698.26	2.70	-42.62	436,057.97	760,460.36	32.196817	-103.624949
2,744.75	7.45	273.62	2,742.66	3.05	-48.24	436,058.32	760,454.74	32.196818	-103.624967
2,800.00	7.45	273.62	2,797.44	3.51	-55.38	436,058.78	760,447.59	32.196819	-103.624990
2,900.00	7.45	273.62	2,896.59	4.32	-68.32	436,059.59	760,434.66	32.196821	-103.625032
3,000.00	7.45	273.62	2,995.75	5.14	-81.26	436,060.41	760,421.72	32.196824	-103.625074
3,100.00	7.45	273.62	3,094.91	5.96	-94.19	436,061.23	760,408.78	32.196826	-103.625116
3,200.00	7.45	273.62	3,194.06	6.78	-107.13	436,062.05	760,395.85	32.196829	-103.625157
3,300.00	7.45	273.62	3,293.22	7.60	-120.06	436,062.87	760,382.91	32.196831	-103.625199
3,400.00	7.45	273.62	3,392.38	8.42	-133.00	436,063.69	760,369.98	32.196834	-103.625241
3,500.00	7.45	273.62	3,491.53	9.24	-145.94	436,064.51	760,357.04	32.196836	-103.625283
3,600.00	7.45	273.62	3,590.69	10.06	-158.87	436,065.32	760,344.10	32.196839	-103.625325
3,700.00	7.45	273.62	3,689.85	10.87	-171.81	436,066.14	760,331.17	32.196841	-103.625366
3,800.00	7.45	273.62	3,789.00	11.69	-184.74	436,066.96	760,318.23	32.196844	-103.625408
3,900.00	7.45	273.62	3,888.16	12.51	-197.68	436,067.78	760,305.30	32.196846	-103.625450
4,000.00	7.45	273.62	3,987.32	13.33	-210.62	436,068.60	760,292.36	32.196849	-103.625492
4,100.00	7.45	273.62	4,086.47	14.15	-223.55	436,069.42	760,279.43	32.196851	-103.625534
4,200.00	7.45	273.62	4,185.63	14.97	-236.49	436,070.24	760,266.49	32.196854	-103.625575
4,300.00	7.45	273.62	4,284.78	15.79	-249.42	436,071.06	760,253.55	32.196856	-103.625617
4,400.00	7.45	273.62	4,383.94	16.61	-262.36	436,071.87	760,240.62	32.196859	-103.625659
4,500.00	7.45	273.62	4,483.10	17.42	-275.30	436,072.69	760,227.68	32.196861	-103.625701
4,600.00	7.45	273.62	4,582.25	18.24	-288.23	436,073.51	760,214.75	32.196864	-103.625743
4,700.00	7.45	273.62	4,681.41	19.06	-301.17	436,074.33	760,201.81	32.196866	-103.625784
4,800.00	7.45	273.62	4,780.57	19.88	-314.10	436,075.15	760,188.87	32.196869	-103.625826
4,900.00	7.45	273.62	4,879.72	20.70	-327.04	436,075.97	760,175.94	32.196871	-103.625868
5,000.00	7.45	273.62	4,978.88	21.52	-339.98	436,076.79	760,163.00	32.196874	-103.625910
5,100.00	7.45	273.62	5,078.04	22.34	-352.91	436,077.61	760,150.07	32.196876	-103.625952
5,200.00	7.45	273.62	5,177.19	23.15	-365.85	436,078.42	760,137.13	32.196879	-103.625993

Planning Report - Geographic

Database:	EDM r5000.141_Prod US	Local Co-ordinate Reference	Well Bell Lake 24 Fed 10H
Company:	WCDSC Permian NM	TVD Reference:	RKB @ 3575.70ft
Project:	Lea County (NAD83 New Mexico East)	MD Reference:	RKB @ 3575.70ft
Site:	Sec 24-24S-32E	North Reference:	Grid
Well:	Bell Lake 24 Fed 10H	Survey Calculation Method:	Minimum Curvature
Wellbore:	Wellbore #1		
Design:	Permit Plan 1		

Planned Survey										
Measured Depth (ft)	Inclination (°)	Azimuth (°)	Vertical Depth (ft)	+N/-S (ft)	+E/-W (ft)	Map Northing (usft)	Map Easting (usft)	Latitude	Longitude	
5,300.00	7.45	273.62	5,276.35	23.97	-378.78	436,079.24	760,124.19	32.196881	-103.626035	
5,400.00	7.45	273.62	5,375.50	24.79	-391.72	436,080.06	760,111.26	32.196884	-103.626077	
5,500.00	7.45	273.62	5,474.66	25.61	-404.66	436,080.88	760,098.32	32.196886	-103.626119	
5,600.00	7.45	273.62	5,573.82	26.43	-417.59	436,081.70	760,085.39	32.196889	-103.626161	
5,700.00	7.45	273.62	5,672.97	27.25	-430.53	436,082.52	760,072.45	32.196891	-103.626202	
5,800.00	7.45	273.62	5,772.13	28.07	-443.46	436,083.34	760,059.51	32.196894	-103.626244	
5,900.00	7.45	273.62	5,871.29	28.89	-456.40	436,084.16	760,046.58	32.196896	-103.626286	
6,000.00	7.45	273.62	5,970.44	29.70	-469.34	436,084.97	760,033.64	32.196898	-103.626328	
6,100.00	7.45	273.62	6,069.60	30.52	-482.27	436,085.79	760,020.71	32.196901	-103.626370	
6,200.00	7.45	273.62	6,168.76	31.34	-495.21	436,086.61	760,007.77	32.196903	-103.626411	
6,300.00	7.45	273.62	6,267.91	32.16	-508.14	436,087.43	759,994.84	32.196906	-103.626453	
6,400.00	7.45	273.62	6,367.07	32.98	-521.08	436,088.25	759,981.90	32.196908	-103.626495	
6,500.00	7.45	273.62	6,466.23	33.80	-534.01	436,089.07	759,968.96	32.196911	-103.626537	
6,600.00	7.45	273.62	6,565.38	34.62	-546.95	436,089.89	759,956.03	32.196913	-103.626579	
6,700.00	7.45	273.62	6,664.54	35.44	-559.89	436,090.71	759,943.09	32.196916	-103.626620	
6,800.00	7.45	273.62	6,763.69	36.25	-572.82	436,091.52	759,930.16	32.196918	-103.626662	
6,900.00	7.45	273.62	6,862.85	37.07	-585.76	436,092.34	759,917.22	32.196921	-103.626704	
7,000.00	7.45	273.62	6,962.01	37.89	-598.69	436,093.16	759,904.28	32.196923	-103.626746	
7,100.00	7.45	273.62	7,061.16	38.71	-611.63	436,093.98	759,891.35	32.196926	-103.626788	
7,200.00	7.45	273.62	7,160.32	39.53	-624.57	436,094.80	759,878.41	32.196928	-103.626829	
7,300.00	7.45	273.62	7,259.48	40.35	-637.50	436,095.62	759,865.48	32.196931	-103.626871	
7,400.00	7.45	273.62	7,358.63	41.17	-650.44	436,096.44	759,852.54	32.196933	-103.626913	
7,500.00	7.45	273.62	7,457.79	41.99	-663.37	436,097.26	759,839.60	32.196936	-103.626955	
7,600.00	7.45	273.62	7,556.95	42.80	-676.31	436,098.07	759,826.67	32.196938	-103.626997	
7,700.00	7.45	273.62	7,656.10	43.62	-689.25	436,098.89	759,813.73	32.196941	-103.627038	
7,800.00	7.45	273.62	7,755.26	44.44	-702.18	436,099.71	759,800.80	32.196943	-103.627080	
7,900.00	7.45	273.62	7,854.41	45.26	-715.12	436,100.53	759,787.86	32.196946	-103.627122	
8,000.00	7.45	273.62	7,953.57	46.08	-728.05	436,101.35	759,774.92	32.196948	-103.627164	
8,100.00	7.45	273.62	8,052.73	46.90	-740.99	436,102.17	759,761.99	32.196951	-103.627206	
8,200.00	7.45	273.62	8,151.88	47.72	-753.93	436,102.99	759,749.05	32.196953	-103.627247	
8,230.27	7.45	273.62	8,181.89	47.96	-757.84	436,103.23	759,745.14	32.196954	-103.627260	
8,300.00	6.40	273.62	8,251.12	48.50	-766.23	436,103.77	759,736.75	32.196956	-103.627287	
8,400.00	4.90	273.62	8,350.63	49.12	-776.06	436,104.39	759,726.92	32.196957	-103.627319	
8,500.00	3.40	273.62	8,450.36	49.57	-783.28	436,104.84	759,719.69	32.196959	-103.627342	
8,600.00	1.90	273.62	8,550.26	49.87	-787.90	436,105.14	759,715.08	32.196960	-103.627357	
8,700.00	0.40	273.62	8,650.23	49.99	-789.91	436,105.26	759,713.07	32.196960	-103.627364	
8,726.77	0.00	0.00	8,677.00	50.00	-790.00	436,105.27	759,712.98	32.196960	-103.627364	
8,800.00	0.00	0.00	8,750.23	50.00	-790.00	436,105.27	759,712.98	32.196960	-103.627364	
8,900.00	0.00	0.00	8,850.23	50.00	-790.00	436,105.27	759,712.98	32.196960	-103.627364	
9,000.00	0.00	0.00	8,950.23	50.00	-790.00	436,105.27	759,712.98	32.196960	-103.627364	
9,076.81	0.00	0.00	9,027.04	50.00	-790.00	436,105.27	759,712.98	32.196960	-103.627364	
KOP & FTP @ 9077' MD, 378' FSL, 2332' FEL										
9,100.00	2.32	359.67	9,050.23	50.47	-790.00	436,105.74	759,712.98	32.196961	-103.627364	
9,200.00	12.32	359.67	9,149.28	63.19	-790.08	436,118.46	759,712.90	32.196996	-103.627364	
9,300.00	22.32	359.67	9,244.63	92.92	-790.25	436,148.19	759,712.73	32.197078	-103.627364	
9,400.00	32.32	359.67	9,333.36	138.76	-790.51	436,194.03	759,712.47	32.197204	-103.627364	
9,500.00	42.32	359.67	9,412.79	199.31	-790.85	436,254.58	759,712.13	32.197370	-103.627363	
9,600.00	52.32	359.67	9,480.50	272.73	-791.27	436,328.00	759,711.71	32.197572	-103.627363	
9,700.00	62.32	359.67	9,534.42	356.79	-791.75	436,412.06	759,711.23	32.197803	-103.627363	
9,800.00	72.32	359.67	9,572.93	448.94	-792.28	436,504.20	759,710.70	32.198057	-103.627363	
9,900.00	82.32	359.67	9,594.86	546.37	-792.84	436,601.64	759,710.14	32.198324	-103.627363	
9,976.81	90.00	359.67	9,600.00	622.95	-793.27	436,678.22	759,709.71	32.198535	-103.627362	
10,000.00	90.00	359.67	9,600.00	646.14	-793.41	436,701.41	759,709.57	32.198599	-103.627362	
10,100.00	90.00	359.67	9,600.00	746.14	-793.98	436,801.41	759,709.00	32.198874	-103.627362	

Planning Report - Geographic

Database:	EDM r5000.141_Prod US	Local Co-ordinate Reference	Well Bell Lake 24 Fed 10H
Company:	WCDSC Permian NM	TVD Reference:	RKB @ 3575.70ft
Project:	Lea County (NAD83 New Mexico East)	MD Reference:	RKB @ 3575.70ft
Site:	Sec 24-24S-32E	North Reference:	Grid
Well:	Bell Lake 24 Fed 10H	Survey Calculation Method:	Minimum Curvature
Wellbore:	Wellbore #1		
Design:	Permit Plan 1		

Planned Survey									
Measured Depth (ft)	Inclination (°)	Azimuth (°)	Vertical Depth (ft)	+N/-S (ft)	+E/-W (ft)	Map Northing (usft)	Map Easting (usft)	Latitude	Longitude
10,200.00	90.00	359.67	9,600.00	846.14	-794.55	436,901.40	759,708.43	32.199148	-103.627362
10,300.00	90.00	359.67	9,600.00	946.13	-795.12	437,001.40	759,707.86	32.199423	-103.627361
10,400.00	90.00	359.67	9,600.00	1,046.13	-795.69	437,101.40	759,707.29	32.199698	-103.627361
10,500.00	90.00	359.67	9,600.00	1,146.13	-796.26	437,201.40	759,706.72	32.199973	-103.627361
10,600.00	90.00	359.67	9,600.00	1,246.13	-796.83	437,301.40	759,706.15	32.200248	-103.627361
10,700.00	90.00	359.67	9,600.00	1,346.13	-797.40	437,401.39	759,705.57	32.200523	-103.627360
10,800.00	90.00	359.67	9,600.00	1,446.13	-797.98	437,501.39	759,705.00	32.200798	-103.627360
10,900.00	90.00	359.67	9,600.00	1,546.12	-798.55	437,601.39	759,704.43	32.201073	-103.627360
11,000.00	90.00	359.67	9,600.00	1,646.12	-799.12	437,701.39	759,703.86	32.201347	-103.627359
11,100.00	90.00	359.67	9,600.00	1,746.12	-799.69	437,801.39	759,703.29	32.201622	-103.627359
11,200.00	90.00	359.67	9,600.00	1,846.12	-800.26	437,901.39	759,702.72	32.201897	-103.627359
11,300.00	90.00	359.67	9,600.00	1,946.12	-800.83	438,001.38	759,702.15	32.202172	-103.627359
11,400.00	90.00	359.67	9,600.00	2,046.12	-801.40	438,101.38	759,701.58	32.202447	-103.627358
11,500.00	90.00	359.67	9,600.00	2,146.11	-801.97	438,201.38	759,701.00	32.202722	-103.627358
11,600.00	90.00	359.67	9,600.00	2,246.11	-802.54	438,301.38	759,700.43	32.202997	-103.627358
11,700.00	90.00	359.67	9,600.00	2,346.11	-803.12	438,401.38	759,699.86	32.203272	-103.627358
11,800.00	90.00	359.67	9,600.00	2,446.11	-803.69	438,501.37	759,699.29	32.203547	-103.627357
11,900.00	90.00	359.67	9,600.00	2,546.11	-804.26	438,601.37	759,698.72	32.203821	-103.627357
12,000.00	90.00	359.67	9,600.00	2,646.11	-804.83	438,701.37	759,698.15	32.204096	-103.627357
12,100.00	90.00	359.67	9,600.00	2,746.10	-805.40	438,801.37	759,697.58	32.204371	-103.627356
12,200.00	90.00	359.67	9,600.00	2,846.10	-805.97	438,901.37	759,697.01	32.204646	-103.627356
12,300.00	90.00	359.67	9,600.00	2,946.10	-806.54	439,001.37	759,696.44	32.204921	-103.627356
12,400.00	90.00	359.67	9,600.00	3,046.10	-807.11	439,101.36	759,695.86	32.205196	-103.627356
12,500.00	90.00	359.67	9,600.00	3,146.10	-807.69	439,201.36	759,695.29	32.205471	-103.627355
12,600.00	90.00	359.67	9,600.00	3,246.10	-808.26	439,301.36	759,694.72	32.205746	-103.627355
12,700.00	90.00	359.67	9,600.00	3,346.10	-808.83	439,401.36	759,694.15	32.206020	-103.627355
12,800.00	90.00	359.67	9,600.00	3,446.09	-809.40	439,501.36	759,693.58	32.206295	-103.627355
12,900.00	90.00	359.67	9,600.00	3,546.09	-809.97	439,601.35	759,693.01	32.206570	-103.627354
13,000.00	90.00	359.67	9,600.00	3,646.09	-810.54	439,701.35	759,692.44	32.206845	-103.627354
13,100.00	90.00	359.67	9,600.00	3,746.09	-811.11	439,801.35	759,691.87	32.207120	-103.627354
13,200.00	90.00	359.67	9,600.00	3,846.09	-811.68	439,901.35	759,691.29	32.207395	-103.627353
13,300.00	90.00	359.67	9,600.00	3,946.09	-812.26	440,001.35	759,690.72	32.207670	-103.627353
13,400.00	90.00	359.67	9,600.00	4,046.08	-812.83	440,101.35	759,690.15	32.207945	-103.627353
13,500.00	90.00	359.67	9,600.00	4,146.08	-813.40	440,201.34	759,689.58	32.208219	-103.627353
13,600.00	90.00	359.67	9,600.00	4,246.08	-813.97	440,301.34	759,689.01	32.208494	-103.627352
13,700.00	90.00	359.67	9,600.00	4,346.08	-814.54	440,401.34	759,688.44	32.208769	-103.627352
13,800.00	90.00	359.67	9,600.00	4,446.08	-815.11	440,501.34	759,687.87	32.209044	-103.627352
13,900.00	90.00	359.67	9,600.00	4,546.08	-815.68	440,601.34	759,687.30	32.209319	-103.627351
14,000.00	90.00	359.67	9,600.00	4,646.07	-816.25	440,701.33	759,686.72	32.209594	-103.627351
14,100.00	90.00	359.67	9,600.00	4,746.07	-816.83	440,801.33	759,686.15	32.209869	-103.627351
14,200.00	90.00	359.67	9,600.00	4,846.07	-817.40	440,901.33	759,685.58	32.210144	-103.627351
14,211.88	90.00	359.67	9,600.00	4,857.95	-817.46	440,913.21	759,685.51	32.210176	-103.627351
LTP @ 14212' MD, 100' FNL, 2332' FEL									
14,291.88	90.00	359.67	9,600.00	4,937.95	-817.92	440,993.21	759,685.06	32.210396	-103.627350
PBHL; 20' FNL, 2332' FEL									
14,291.89	90.00	359.67	9,600.00	4,937.96	-817.92	440,993.22	759,685.06	32.210396	-103.627350

Planning Report - Geographic

Database:	EDM r5000.141_Prod US	Local Co-ordinate Reference	Well Bell Lake 24 Fed 10H
Company:	WCDSC Permian NM	TVD Reference:	RKB @ 3575.70ft
Project:	Lea County (NAD83 New Mexico East)	MD Reference:	RKB @ 3575.70ft
Site:	Sec 24-24S-32E	North Reference:	Grid
Well:	Bell Lake 24 Fed 10H	Survey Calculation Method:	Minimum Curvature
Wellbore:	Wellbore #1		
Design:	Permit Plan 1		

Design Targets									
Target Name									
- hit/miss target	Dip Angle	Dip Dir.	TVD	+N/-S	+E/-W	Northing	Easting	Latitude	Longitude
- Shape	(°)	(°)	(ft)	(ft)	(ft)	(usft)	(usft)		
PBHL - Bell Lake 24 Fec	0.00	0.00	0.00	4,937.96	-817.92	440,993.22	759,685.06	32.210396	-103.627350
- plan misses target center by 5005.24ft at 0.00ft MD (0.00 TVD, 0.00 N, 0.00 E)									
- Point									

Plan Annotations				
Measured	Vertical	Local Coordinates		Comment
Depth	Depth	+N/-S	+E/-W	
(ft)	(ft)	(ft)	(ft)	
9,076.81	9,027.04	50.00	-790.00	KOP & FTP @ 9077' MD, 378' FSL, 2332' FEL
14,211.88	9,600.00	4,857.95	-817.46	LTP @ 14212' MD, 100' FNL, 2332' FEL
14,291.88	9,600.00	4,937.95	-817.92	PBHL; 20' FNL, 2332' FEL

1. Geologic Formations

TVD of target	9600	Pilot hole depth	N/A
MD at TD:	14292	Deepest expected fresh water	

Basin

Formation	Depth (TVD) from KB	Water/Mineral Bearing/Target Zone?	Hazards*
Rustler	1176		
Salt	1500		
Base of Salt	4976		
Delaware	5015		
Bone Spring 1st	8917		
Bone Spring 2nd	10242		
Bone Spring 3rd	10790		
Wolfcamp	12199		

*H2S, water flows, loss of circulation, abnormal pressures, etc.

2. Casing Program

Hole Size	Casing Interval		Csg. Size	Wt (PPF)	Grade	Conn	Min SF Collapse	Min SF Burst	Min SF Tension
	From	To							
17 1/2	0	1201 TVD	13 3/8	48.0	H40	BTC	1.125	1.25	1.6
12 1/4	0	4990 TVD	9 5/8	40.0	J-55	BTC	1.125	1.25	1.6
8 3/4	0	TD	5 1/2	17.0	P110	BTC	1.125	1.25	1.6
BLM Minimum Safety Factor							1.125	1	1.6 Dry 1.8 Wet

- All casing strings will be tested in accordance with Onshore Oil and Gas Order #2 IILB.1.h Must have table for contingency casing.
- Rustler top will be validated via drilling parameters (i.e. reduction in ROP) and surface casing setting depth revised accordingly if needed.
- A variance is requested for collapse rating on intermediate casing. Operator will keep pipe full while running casing.
- Int casing shoe will be selected based on drilling data, gamma, and flows experienced while drilling. Setting depth with be revised accordingly if needed.
- A variance is requested to wave the centralizer requirement for the Intermediate casing and production casing.

Bell Lake 24 Fed 10H

	Y or N
Is casing new? If used, attach certification as required in Onshore Order #1	Y
Does casing meet API specifications? If no, attach casing specification sheet.	Y
Is premium or uncommon casing planned? If yes attach casing specification sheet.	N
Does the above casing design meet or exceed BLM's minimum standards? If not provide justification (loading assumptions, casing design criteria).	Y
Will the intermediate pipe be kept at a minimum 1/3 fluid filled to avoid approaching the collapse pressure rating of the casing?	Y
Is well located within Capitan Reef?	N
If yes, does production casing cement tie back a minimum of 50' above the Reef?	
Is well within the designated 4 string boundary.	
Is well located in SOPA but not in R-111-P?	N
If yes, are the first 2 strings cemented to surface and 3 rd string cement tied back 500' into previous casing?	
Is well located in R-111-P and SOPA?	N
If yes, are the first three strings cemented to surface?	
Is 2 nd string set 100' to 600' below the base of salt?	
Is well located in high Cave/Karst?	N
If yes, are there two strings cemented to surface?	
(For 2 string wells) If yes, is there a contingency casing if lost circulation occurs?	
Is well located in critical Cave/Karst?	N
If yes, are there three strings cemented to surface?	

3. Cementing Program (3-String Primary Design)

Casing	# Sk	TOC	Wt. (lb/gal)	Yld (ft³/sack)	Slurry Description
Surface	908	Surf	13.2	1.4	Lead: Class C Cement + additives
Int	548	Surf	9.0	3.3	Lead: Class C Cement + additives
	154	500' above shoe	13.2	1.4	Tail: Class H / C + additives
Int 1 Two Stage w/ DV @ TVD of Delaware	538	Surf	9.0	3.3	1st stage Lead: Class C Cement + additives
	136	500' above shoe	13.2	1.4	1st stage Tail: Class H / C + additives
	535	Surf	9.0	3.3	2nd stage Lead: Class C Cement + additives
	136	500' above DV	13.2	1.4	2nd stage Tail: Class H / C + additives
Int 1 Intermediate Squeeze	As Needed	Surf	9.0	3.3	Squeeze Lead: Class C Cement + additives
	548	Surf	9.0	3.3	Lead: Class C Cement + additives
	154	500' above shoe	13.2	1.4	Tail: Class H / C + additives
Production	391	500' tieback	9.0	3.3	Lead: Class H / C + additives
	1006	KOP	13.2	1.4	Tail: Class H / C + additives

If a DV tool is ran the depth(s) will be adjusted based on hole conditions and cement volumes will be adjusted proportionally. Slurry weights will be adjusted based on estimated fracture gradient of the formation. DV tool will be set a minimum of 50 feet below previous casing and a minimum of 200 feet above current shoe. If cement is not returned to surface during the primary cement job on the surface casing string, a planned top job will be conducted immediately after completion of the primary job.

Casing String	% Excess
Surface	50%
Intermediate	30%
Production	10%

4. Pressure Control Equipment (Three String Design)

BOP installed and tested before drilling which hole?	Size?	Min. Required WP	Type	✓	Tested to:
Int 1	13-58"	5M	Annular	X	50% of rated working pressure
			Blind Ram	X	5M
			Pipe Ram		
			Double Ram	X	
			Other*		
Production	13-5/8"	5M	Annular	X	50% of rated working pressure
			Blind Ram	X	5M
			Pipe Ram		
			Double Ram	X	
			Other*		
			Annular (5M)		
			Blind Ram		
			Pipe Ram		
			Double Ram		
			Other*		

5. Mud Program (Three String Design)

Section	Type	Weight (ppg)
Surface	FW Gel	8.5-9
Intermediate	Brine	10-10.5
Production	WBM	8.5-9

Sufficient mud materials to maintain mud properties and meet minimum lost circulation and weight increase requirements will be kept on location at all times.

What will be used to monitor the loss or gain of fluid?	PVT/Pason/Visual Monitoring
---	-----------------------------

6. Logging and Testing Procedures

Logging, Coring and Testing	
X	Will run GR/CNL from TD to surface (horizontal well - vertical portion of hole). Stated logs run will be in the Completion Report and submitted to the BLM.
	No logs are planned based on well control or offset log information.
	Drill stem test? If yes, explain.
	Coring? If yes, explain.

Additional logs planned		Interval
	Resistivity	
	Density	
X	CBL	Production casing
X	Mud log	KOP to TD
	PEX	

7. Drilling Conditions

Condition	Specify what type and where?
BH pressure at deepest TVD	4493
Abnormal temperature	No

Mitigation measure for abnormal conditions. Describe. Lost circulation material/sweeps/mud scavengers.

Hydrogen Sulfide (H₂S) monitors will be installed prior to drilling out the surface shoe. If H₂S is detected in concentrations greater than 100 ppm, the operator will comply with the provisions of Onshore Oil and Gas Order #6. If Hydrogen Sulfide is encountered measured values and formations will be provided to the BLM.

N	H ₂ S is present
Y	H ₂ S plan attached.

8. Other facets of operation

Is this a walking operation? Potentially

- 1 If operator elects, drilling rig will batch drill the surface holes and run/cement surface casing; walking the rig to next wells on the pad.
- 2 The drilling rig will then batch drill the intermediate sections and run/cement intermediate casing; the wellbore will be isolated with a blind flange and pressure gauge installed for monitoring the well before walking to the next well.
- 3 The drilling rig will then batch drill the production hole sections on the wells with OBM, run/cement production casing, and install TA caps or tubing heads for completions.

NOTE: During batch operations the drilling rig will be moved from well to well however, it will not be removed from the pad until all wells have production casing run/cemented.

Will be pre-setting casing? Potentially

- 1 Spudder rig will move in and batch drill surface hole.
 - a. Rig will utilize fresh water based mud to drill surface hole to TD. Solids control will be handled entirely on a closed loop basis.
- 2 After drilling the surface hole section, the spudder rig will run casing and cement following all of the applicable rules and regulations (OnShore Order 2, all COAs and NMOCD regulations).
- 3 The wellhead will be installed and tested once the surface casing is cut off and the WOC time has been reached.
- 4 A blind flange with the same pressure rating as the wellhead will be installed to seal the wellbore. Pressure will be monitored with a pressure gauge installed on the wellhead.
- 5 Spudder rig operations is expected to take 4-5 days per well on a multi-well pad.
- 6 The NMOCD will be contacted and notified 24 hours prior to commencing spudder rig operations.
- 7 Drilling operations will be performed with drilling rig. At that time an approved BOP stack will be nipped up and tested on the wellhead before drilling operations commences on each well.
 - a. The NMOCD will be contacted / notified 24 hours before the drilling rig moves back on to the pad with the pre-set surface casing.

Attachments

X Directional Plan
 Other, describe



U.S. Department of the Interior
BUREAU OF LAND MANAGEMENT

PWD Data Report

02/06/2020

APD ID: 10400045252

Submission Date: 08/02/2019

Operator Name: DEVON ENERGY PRODUCTION COMPANY LP

Well Name: BELL LAKE 24 FED

Well Number: 10H

Well Type: OIL WELL

Well Work Type: Drill

Section 1 - General

Would you like to address long-term produced water disposal? NO

Section 2 - Lined Pits

Would you like to utilize Lined Pit PWD options? N

Produced Water Disposal (PWD) Location:

PWD surface owner:

PWD disturbance (acres):

Lined pit PWD on or off channel:

Lined pit PWD discharge volume (bbl/day):

Lined pit specifications:

Pit liner description:

Pit liner manufacturers information:

Precipitated solids disposal:

Describe precipitated solids disposal:

Precipitated solids disposal permit:

Lined pit precipitated solids disposal schedule:

Lined pit precipitated solids disposal schedule attachment:

Lined pit reclamation description:

Lined pit reclamation attachment:

Leak detection system description:

Leak detection system attachment:

Operator Name: DEVON ENERGY PRODUCTION COMPANY LP

Well Name: BELL LAKE 24 FED

Well Number: 10H

Lined pit Monitor description:

Lined pit Monitor attachment:

Lined pit: do you have a reclamation bond for the pit?

Is the reclamation bond a rider under the BLM bond?

Lined pit bond number:

Lined pit bond amount:

Additional bond information attachment:

Section 3 - Unlined Pits

Would you like to utilize Unlined Pit PWD options? N

Produced Water Disposal (PWD) Location:

PWD disturbance (acres):

PWD surface owner:

Unlined pit PWD on or off channel:

Unlined pit PWD discharge volume (bbl/day):

Unlined pit specifications:

Precipitated solids disposal:

Describe precipitated solids disposal:

Precipitated solids disposal permit:

Unlined pit precipitated solids disposal schedule:

Unlined pit precipitated solids disposal schedule attachment:

Unlined pit reclamation description:

Unlined pit reclamation attachment:

Unlined pit Monitor description:

Unlined pit Monitor attachment:

Do you propose to put the produced water to beneficial use?

Beneficial use user confirmation:

Estimated depth of the shallowest aquifer (feet):

Does the produced water have an annual average Total Dissolved Solids (TDS) concentration equal to or less than that of the existing water to be protected?

TDS lab results:

Geologic and hydrologic evidence:

State authorization:

Unlined Produced Water Pit Estimated percolation:

Unlined pit: do you have a reclamation bond for the pit?

Operator Name: DEVON ENERGY PRODUCTION COMPANY LP

Well Name: BELL LAKE 24 FED

Well Number: 10H

Is the reclamation bond a rider under the BLM bond?

Unlined pit bond number:

Unlined pit bond amount:

Additional bond information attachment:

Section 4 - Injection

Would you like to utilize Injection PWD options? N

Produced Water Disposal (PWD) Location:

PWD surface owner:

PWD disturbance (acres):

Injection PWD discharge volume (bbl/day):

Injection well mineral owner:

Injection well type:

Injection well number:

Injection well name:

Assigned injection well API number?

Injection well API number:

Injection well new surface disturbance (acres):

Minerals protection information:

Mineral protection attachment:

Underground Injection Control (UIC) Permit?

UIC Permit attachment:

Section 5 - Surface Discharge

Would you like to utilize Surface Discharge PWD options? N

Produced Water Disposal (PWD) Location:

PWD surface owner:

PWD disturbance (acres):

Surface discharge PWD discharge volume (bbl/day):

Surface Discharge NPDES Permit?

Surface Discharge NPDES Permit attachment:

Surface Discharge site facilities information:

Surface discharge site facilities map:

Section 6 - Other

Would you like to utilize Other PWD options? N

Produced Water Disposal (PWD) Location:

PWD surface owner:

PWD disturbance (acres):

Other PWD discharge volume (bbl/day):

Operator Name: DEVON ENERGY PRODUCTION COMPANY LP

Well Name: BELL LAKE 24 FED

Well Number: 10H

Other PWD type description:

Other PWD type attachment:

Have other regulatory requirements been met?

Other regulatory requirements attachment:



U.S. Department of the Interior
BUREAU OF LAND MANAGEMENT

Bond Info Data Report

02/06/2020

APD ID: 10400045252

Submission Date: 08/02/2019

Operator Name: DEVON ENERGY PRODUCTION COMPANY LP

Well Name: BELL LAKE 24 FED

Well Number: 10H

Well Type: OIL WELL

Well Work Type: Drill

[Show Final Text](#)

Bond Information

Federal/Indian APD: FED

BLM Bond number: NMB000801

BIA Bond number:

Do you have a reclamation bond? NO

Is the reclamation bond a rider under the BLM bond?

Is the reclamation bond BLM or Forest Service?

BLM reclamation bond number:

Forest Service reclamation bond number:

Forest Service reclamation bond attachment:

Reclamation bond number:

Reclamation bond amount:

Reclamation bond rider amount:

Additional reclamation bond information attachment: