

DISTRICT I  
1625 N. WRENCH DR., HOBBS, NM 88240  
Phone: (505) 839-6181 Fax: (505) 839-0720

DISTRICT II  
811 S. FIRST ST., ARTESIA, NM 88210  
Phone: (505) 748-1283 Fax: (505) 748-0720

DISTRICT III  
1000 RIO BRAZOS RD., AZTEC, NM 87410  
Phone: (505) 834-6178 Fax: (505) 834-6170

DISTRICT IV  
1220 S. ST. FRANCIS DR., SANTA FE, NM 87505  
Phone: (505) 476-3460 Fax: (505) 476-3462

State of New Mexico  
Energy, Minerals & Natural Resources Department  
**OIL CONSERVATION DIVISION**  
1220 SOUTH ST. FRANCIS DR.  
Santa Fe, New Mexico 87505

Form C-102  
Revised August 1, 2011  
Submit one copy to appropriate  
District Office

☐ AMENDED REPORT

WELL LOCATION AND ACREAGE DEDICATION PLAT

API Number <b>30-029-46866</b>	Pool Code <b>97784</b>	Pool Name <b>WC-025 G-06 S253201M; UPPER BONE SPR</b>
Property Code <b>39911</b>	Property Name <b>BELL LAKE 24 FED</b>	Well Number <b>010H</b>
GRID No. <b>6137</b>	Operator Name <b>DEVON ENERGY PRODUCTION COMPANY, L.P.</b>	Elevation <b>3550.7'</b>

Surface Location

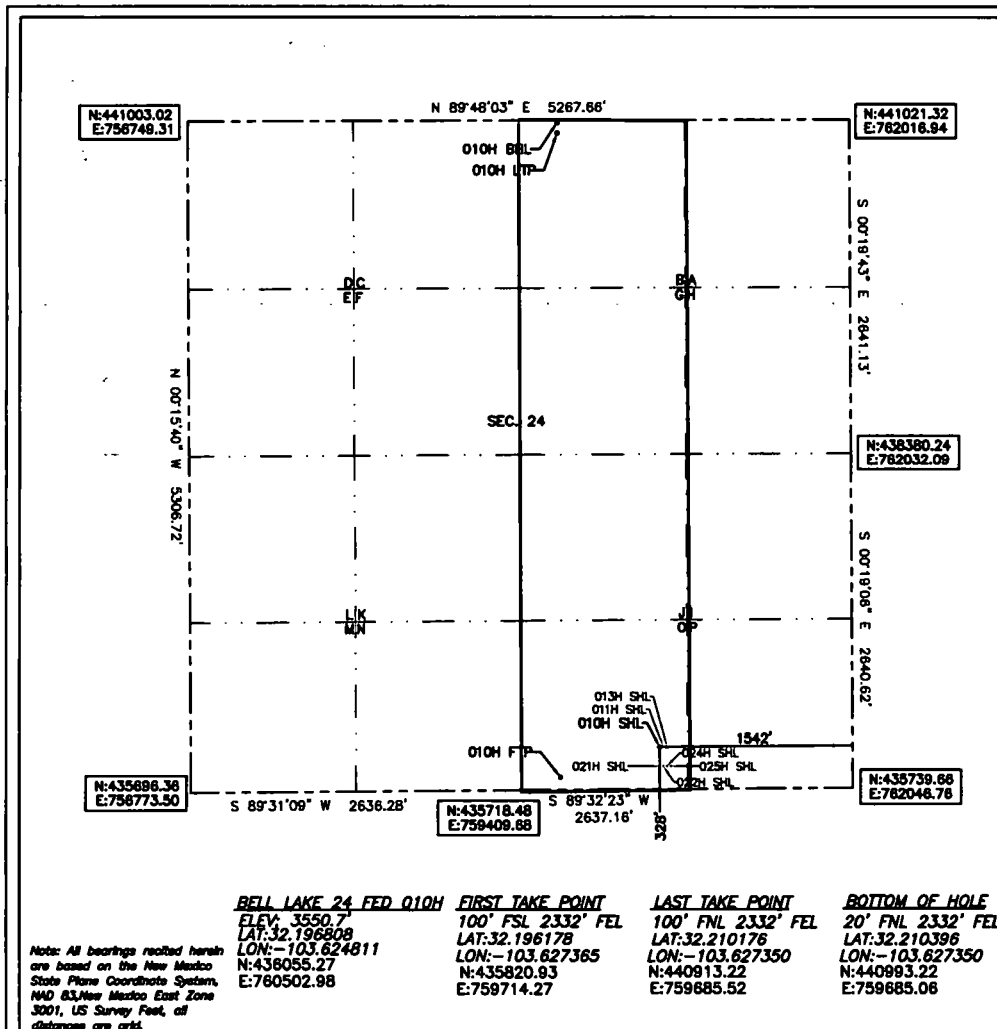
UL or lot No.	Section	Township	Range	Lot Idn	Feet from the	North/South line	Feet from the	East/West line	County
0	24	24-S	32-E		328'	SOUTH	1542	EAST	LEA

Bottom Hole Location If Different From Surface

UL or lot No.	Section	Township	Range	Lot Idn	Feet from the	North/South line	Feet from the	East/West line	County
B	24	24-S	32-E		20	NORTH	2332'	EAST	LEA

Dedicated Acres	Joint or Infill	Consolidation Code	Order No.
160			

NO ALLOWABLE WILL BE ASSIGNED TO THIS COMPLETION UNTIL ALL INTERESTS HAVE BEEN CONSOLIDATED  
OR A NON-STANDARD UNIT HAS BEEN APPROVED BY THE DIVISION



OPERATOR CERTIFICATION

I hereby certify that the information herein is true and complete to the best of my knowledge and belief, and that this organization either owns a working interest or unleased mineral interest in the land including the proposed bottom hole location or has a right to drill this well at this location pursuant to a contract with an owner of such mineral or working interest, or to a voluntary pooling agreement or a compulsory pooling order heretofore entered by the division.

*Rebecca Deal* 6/17/2019  
Signature Date

Rebecca Deal, Regulatory Analyst  
Printed Name

rebecca.deal@dvn.com  
E-mail Address

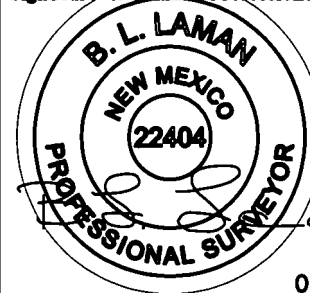
SURVEYOR CERTIFICATION

I hereby certify that the well location shown on this plat was plotted from field notes of actual surveys made by me or under my supervision, and that the same is true and correct to the best of my belief.

5/2019

Date of Survey

Signature & Seal of Professional Surveyor



05/26/19

Certificate No. 22404 B.L. LAMAN

DRAWN BY: JR

Intent ☒ As Drilled ☐

API #  
30-025 46866

Operator Name: DEVON ENERGY PRODUCTION COMPANY, LP.	Property Name: BELL LAKE 24 FED	Well Number 010H
---	------------------------------------	---------------------

Kick Off Point (KOP)

UL	Section 24	Township 24S	Range 32E	Lot	Feet 378	From N/S FSL	Feet 2332	From E/W FEL	County LEA
Latitude 32.196960					Longitude -103.627364			NAD 83	

First Take Point (FTP)

UL	Section 0	Township 24-S	Range 32-E	Lot	Feet 100	From N/S SOUTH	Feet 2332	From E/W EAST	County LEA
Latitude 32.196178					Longitude 103.627365			NAD 83	

Last Take Point (LTP)

UL	Section B	Township 24-S	Range 32-E	Lot	Feet 100	From N/S NORTH	Feet 2332	From E/W EAST	County LEA
Latitude 32.210176					Longitude 103.627350			NAD 83	

Is this well the defining well for the Horizontal Spacing Unit? ☐ N

Is this well an infill well? ☐ Y

If infill is yes please provide API if available, Operator Name and well number for Defining well for Horizontal Spacing Unit.

API #

Operator Name: DEVON ENERGY PRODUCTION CO.	Property Name: BELL LAKE 24 FED	Well Number 11H
---	------------------------------------	--------------------

KZ 06/29/2018