

DISTRICT I
1625 N. FRENCH DR., HOBBES, NM 88340
Phone: (575) 333-6151 Fax: (575) 333-0720

DISTRICT II
811 S. FIRST ST., ARTESIA, NM 88210
Phone: (575) 748-1253 Fax: (575) 748-0720

DISTRICT III
1000 RIO BRAZOS RD., AZTEC, NM 87410
Phone: (505) 334-6178 Fax: (505) 334-6170

DISTRICT IV
1220 S. ST. FRANCIS DR., SANTA FE, NM 87505
Phone: (505) 476-3460 Fax: (505) 476-3462

State of New Mexico
Energy, Minerals & Natural Resources Department
OIL CONSERVATION DIVISION
1220 SOUTH ST. FRANCIS DR.
Santa Fe, New Mexico 87505

Form C-102
Revised August 1, 2011
Submit one copy to appropriate
District Office

☐ AMENDED REPORT

WELL LOCATION AND ACREAGE DEDICATION PLAT

API Number 30-024 46869	Pool Code 97784	Pool Name WC-025 G-06 S253201M; UPPER BONE SPR
Property Code 39911	Property Name BELL LAKE 24 FED	Well Number 013H
GRID No. 6137	Operator Name DEVON ENERGY PRODUCTION COMPANY, L.P.	Elevation 3550.1'

Surface Location

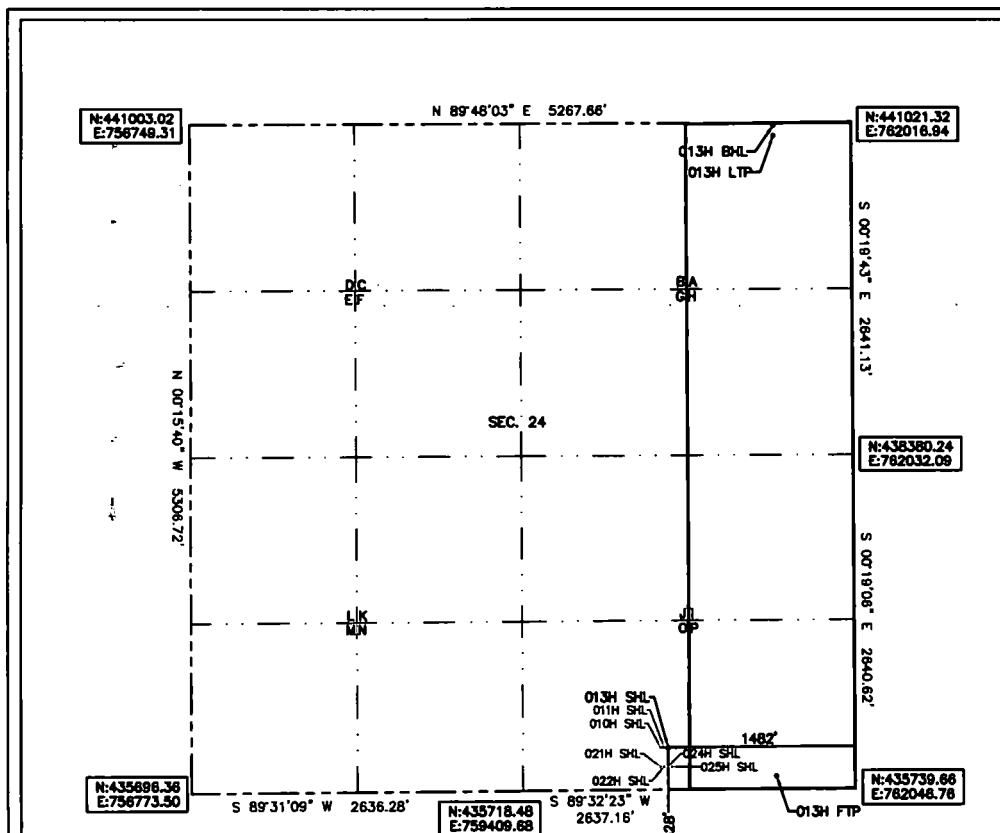
UL or lot No.	Section	Township	Range	Lot Idn	Feet from the	North/South line	Feet from the	East/West line	County
0	24	24-S	32-E		328	SOUTH	1482	EAST	LEA

Bottom Hole Location If Different From Surface

UL or lot No.	Section	Township	Range	Lot Idn	Feet from the	North/South line	Feet from the	East/West line	County
A	24	24-S	32-E		20	NORTH	620	EAST	LEA

Dedicated Acres	Joint or Infill	Consolidation Code	Order No.
160			

NO ALLOWABLE WILL BE ASSIGNED TO THIS COMPLETION UNTIL ALL INTERESTS HAVE BEEN CONSOLIDATED
OR A NON-STANDARD UNIT HAS BEEN APPROVED BY THE DIVISION



Note: All bearings recited herein
are based on the New Mexico
State Plane Coordinate System,
NAD 83, New Mexico East Zone
3001, US Survey Feet, all
distances are grid.

BELL LAKE 24 FED 013H
ELEV: 3550.1'
LAT: 32.196809
LON: -103.624617
N: 438055.75
E: 760562.98

FIRST TAKE POINT
100' FSL 620' FEL
LAT: 32.196185
LON: -103.621831
N: 435834.68
E: 761428.22

LAST TAKE POINT
100' FNL 620' FEL
LAT: 32.210161
LON: -103.621815
N: 440919.17
E: 761397.51

BOTTOM OF HOLE
20' FNL 620' FEL
LAT: 32.210381
LON: -103.621815
N: 440999.17
E: 761397.06

OPERATOR CERTIFICATION

I hereby certify that the information
herein is true and complete to the best of
my knowledge and belief, and that this
organization either owns a working interest
or unleased mineral interest in the land
including the proposed bottom hole location
or has a right to drill this well at this
location pursuant to a contract with an
owner of such mineral or working interest,
or to a voluntary pooling agreement or a
compulsory pooling order heretofore entered
by the division.

Rebecca Deal 6/17/2019
Signature Date

Rebecca Deal, Regulatory Analyst

Printed Name

rebecca.deal@dvn.com

E-mail Address

SURVEYOR CERTIFICATION

I hereby certify that the well location
shown on this plat was plotted from field
notes of actual surveys made by me or
under my supervision, and that the same is
true and correct to the best of my belief.

5/2019

Date of Survey

Signature & Seal of Professional Surveyor



05/26/19

Certificate No. 22404

B. L. LAMAN

DRAWN BY: JR

Intent ☒ As Drilled ☐

API #
30-025

Operator Name: DEVON ENERGY PRODUCTION COMPANY, LP.	Property Name: BELL LAKE 24 FED	Well Number 013H
---	------------------------------------	---------------------

Kick Off Point (KOP)

UL	Section 24	Township 24S	Range 32E	Lot	Feet 200	From N/S FSL	Feet 620	From E/W FEL	County LEA
Latitude 32.196441					Longitude -103.621833			NAD 83	

First Take Point (FTP)

UL P	Section 24	Township 24-S	Range 32-E	Lot	Feet 100	From N/S SOUTH	Feet 620	From E/W EAST	County LEA
Latitude 32.196185					Longitude 103.621831			NAD 83	

Last Take Point (LTP)

UL A	Section 24	Township 24-S	Range 32-E	Lot	Feet 100	From N/S NORTH	Feet 620	From E/W EAST	County LEA
Latitude 32.210161					Longitude 103.621815			NAD 83	

Is this well the defining well for the Horizontal Spacing Unit? ☐

Is this well an infill well? ☐

If infill is yes please provide API if available, Operator Name and well number for Defining well for Horizontal Spacing Unit.

API #
30-025-41306

Operator Name: DEVON ENERGY PRODUCTION CO.	Property Name: Bell Lake 24 Fed 2H	Well Number 2H
---	---------------------------------------	-------------------

KZ 06/29/2018