

## DISTRICT I

1625 N. FRENCH DR., HOBBES, NM 88240  
Phone: (505) 333-0181 Fax: (505) 333-0720

## DISTRICT II

811 S. FIRST ST., ARTESIA, NM 88210  
Phone: (505) 745-1553 Fax: (505) 745-0720

## DISTRICT III

1000 RIO BRAZOS RD., AZTEC, NM 87410  
Phone: (505) 334-0178 Fax: (505) 334-0720

## DISTRICT IV

1250 S. ST. FRANCIS DR., SANTA FE, NM 87505  
Phone: (505) 476-3460 Fax: (505) 476-3460State of New Mexico  
Energy, Minerals & Natural Resources Department  
OIL CONSERVATION DIVISION  
1220 SOUTH ST. FRANCIS DR.  
Santa Fe, New Mexico 87505

Form C-102

Revised August 1, 2011

Submit one copy to appropriate

District Office

☐ AMENDED REPORTRECEIVED  
FEB 10 2020

## WELL LOCATION AND ACREAGE DEDICATION PLAT

API Number <b>30-025-46872</b>	Pool Code <b>98309</b>	Pool Name <b>WC-025 G-08 S243213C;WOLFCAMP</b>
Property Code <b>39911</b>	Property Name <b>BELL LAKE 24 FED</b>	Well Number <b>019H</b>
GRID No. <b>6137</b>	Operator Name <b>DEVON ENERGY PRODUCTION COMPANY, L.P.</b>	Elevation <b>3574.9'</b>

## Surface Location

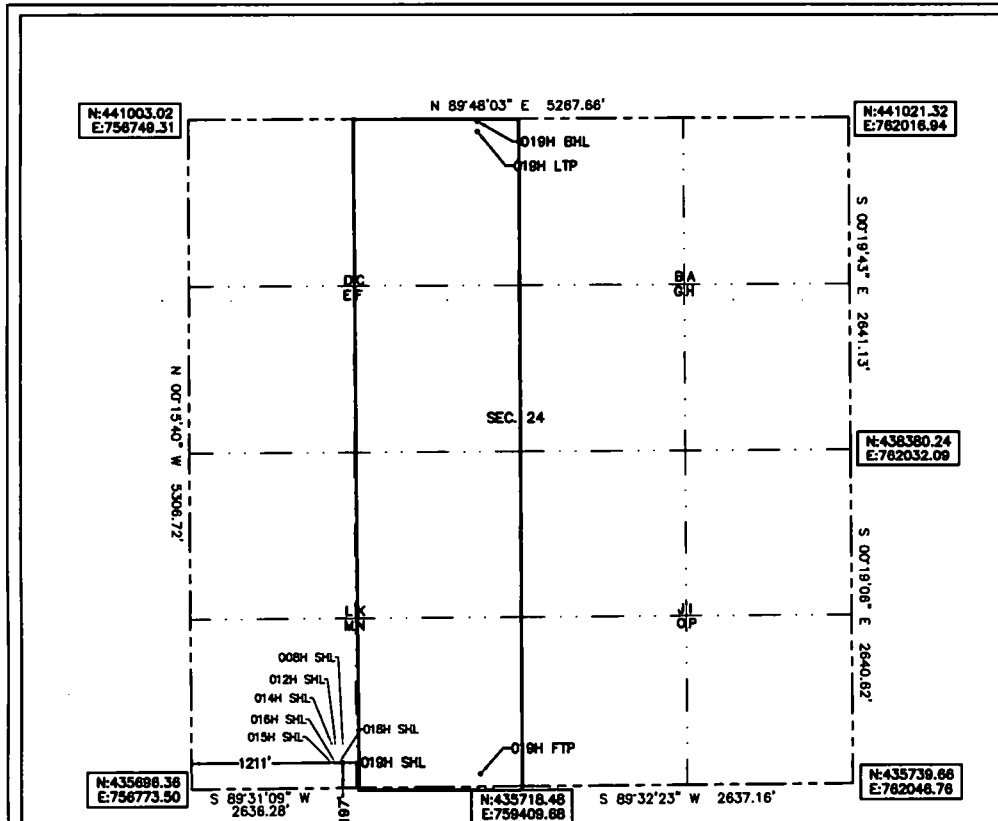
UL or lot No.	Section	Township	Range	Lot Idn	Feet from the	North/South line	Feet from the	East/West line	County
M	24	24-S	32-E		197	SOUTH	1211	WEST	LEA

## Bottom Hole Location If Different From Surface

UL or lot No.	Section	Township	Range	Lot Idn	Feet from the	North/South line	Feet from the	East/West line	County
C	24	24-S	32-E		20	NORTH	2310	WEST	LEA

Dedicated Acres	Joint or Infill	Consolidation Code	Order No.
160			

NO ALLOWABLE WILL BE ASSIGNED TO THIS COMPLETION UNTIL ALL INTERESTS HAVE BEEN CONSOLIDATED  
OR A NON-STANDARD UNIT HAS BEEN APPROVED BY THE DIVISION



Note: All bearings recited herein  
are based on the New Mexico  
State Plane Coordinate System,  
NAD 83, New Mexico East Zone  
3001, US Survey Feet, all  
distances are grid.

BELL LAKE 24 FED 019H  
ELEV: 3574.9  
LAT: 32.196437  
LONG: -103.632958  
N: 435903.52  
E: 757983.56

FIRST TAKE POINT  
100' FSL 2310' FWL  
LAT: 32.198178  
LONG: -103.629408  
N: 435815.74  
E: 759082.98

BOTTOM OF HOLE  
20' FSL 2310' FWL  
LAT: 32.210401  
LONG: -103.629373  
N: 440991.05  
E: 759059.39

LAST TAKE POINT  
100' FSL 2310' FWL  
LAT: 32.210181  
LONG: -103.629374  
N: 440991.05  
E: 759059.78

## OPERATOR CERTIFICATION

I hereby certify that the information  
herein is true and complete to the best of  
my knowledge and belief, and that this  
organization either owns a working interest  
or unleased mineral interest in the land  
including the proposed bottom hole location  
or has a right to drill this well at this  
location pursuant to a contract with an  
owner of such mineral or working interest,  
or to a voluntary pooling agreement or a  
compulsory pooling order heretofore entered  
by the division.

Rebecca Deal 6/19/2019  
Signature Date

Rebecca Deal, Regulatory Analyst  
Printed Name

rebecca.deal@dmn.com  
E-mail Address

## SURVEYOR CERTIFICATION

I hereby certify that the well location  
shown on this plat was plotted from field  
notes of actual surveys made by me or  
under my supervision, and that the same is  
true and correct to the best of my belief.

5/2019

Date of Survey

Signature &amp; Seal of Professional Surveyor



05/20/19

Certificate No. 22404

B.L. LAMAN

DRAWN BY: CM

Intent ☒ As Drilled ☐

API #  
*W-025-*

Operator Name: DEVON ENERGY PRODUCTION COMPANY, LP.	Property Name: BELL LAKE 24 FED	Well Number 019H
---	------------------------------------	---------------------

Kick Off Point (KOP)

UL	Section 24	Township 24S	Range 32E	Lot	Feet 50	From N/S FSL	Feet 2310	From E/W FWL	County LEA
Latitude 32.196013					Longitude -103.629409			NAD 83	

First Take Point (FTP)

UL N	Section 24	Township 24-S	Range 32-E	Lot	Feet 100	From N/S SOUTH	Feet 2310	From E/W WEST	County LEA
Latitude 32.196176					Longitude 103.629406			NAD 83	

Last Take Point (LTP)

UL C	Section 24	Township 24-S	Range 32-E	Lot	Feet 100	From N/S NORTH	Feet 2310	From E/W WEST	County LEA
Latitude 32.210181					Longitude 103.629374			NAD 83	

Is this well the defining well for the Horizontal Spacing Unit? ☐

Is this well an infill well? ☐

If infill is yes please provide API if available, Operator Name and well number for Defining well for Horizontal Spacing Unit.

API #

Operator Name: DEVON ENERGY PRODUCTION CO.	Property Name: Bell Lake 24 Fed	Well Number 18H
---	------------------------------------	--------------------

KZ 06/29/2018