

DISTRICT I
1830 N. FRANKLIN DR., HOBBS, NM 88240
Phone: (505) 533-0181 Fax: (505) 533-0720

DISTRICT II
511 S. FIRST ST., ARTESIA, NM 88210
Phone: (505) 748-1283 Fax: (505) 748-9720

DISTRICT III
1000 RIO BRAZOS RD., AZTEC, NM 87410
Phone: (505) 834-6176 Fax: (505) 834-6170

DISTRICT IV
1830 S. ST. FRANCIS DR., SANTA FE, NM 87505
Phone: (505) 476-3460 Fax: (505) 476-3462

State of New Mexico
Energy, Minerals & Natural Resources Department
OIL CONSERVATION DIVISION
1220 SOUTH ST. FRANCIS DR.
Santa Fe, New Mexico 87505

HOBBS OCD

FEB 10 2020

Form C-102
Revised August 1, 2011
Submit one copy to appropriate
District Office

RECEIVED

☐ AMENDED REPORT

WELL LOCATION AND ACREAGE DEDICATION PLAT

API Number 70025 46876	Pool Code 98309	Pool Name WC-025 G-08 S243213C;WOLFCAMP
Property Code 39911	Property Name BELL LAKE 24 FED	Well Number 025H
GRID No. 6137	Operator Name DEVON ENERGY PRODUCTION COMPANY, L.P.	Elevation 3550.8'

Surface Location

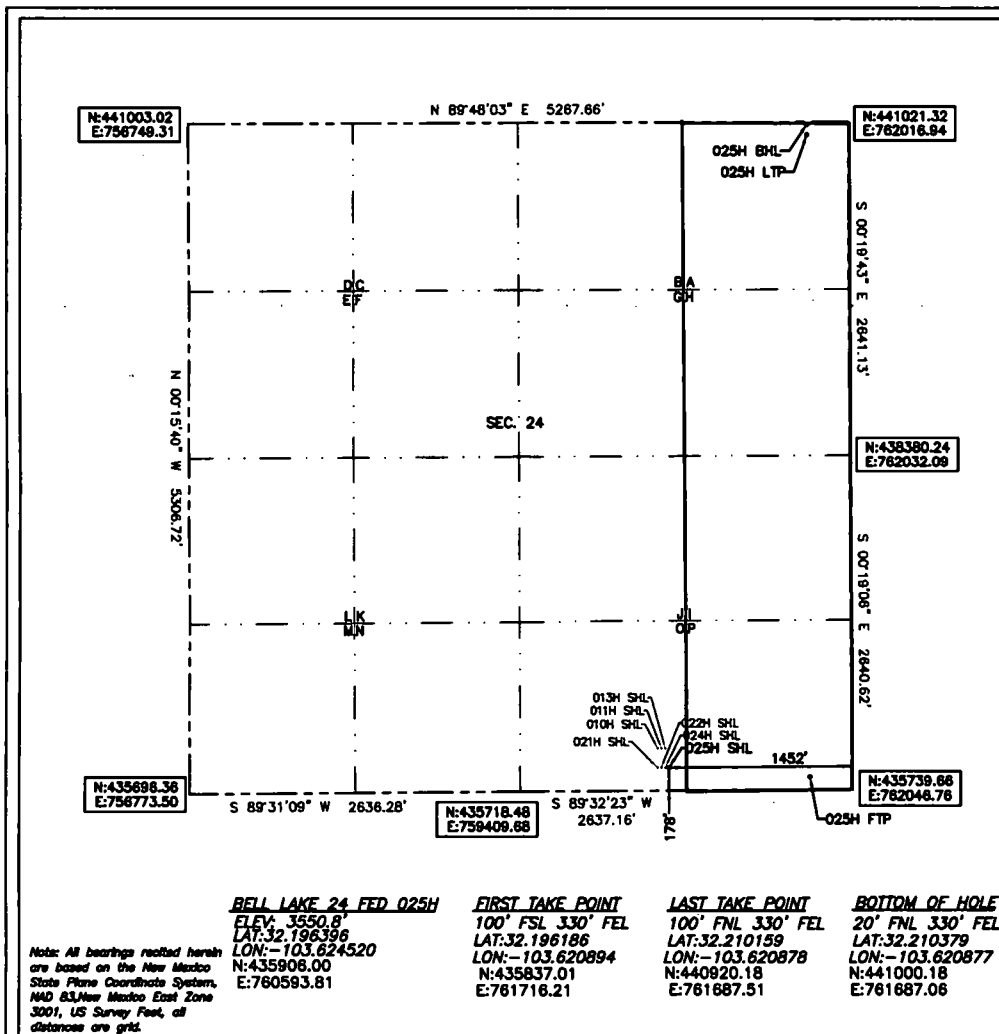
UL or lot No.	Section	Township	Range	Lot Idn	Feet from the	North/South line	Feet from the	East/West line	County
0	24	24-S	32-E		178	SOUTH	1452	EAST	LEA

Bottom Hole Location If Different From Surface

UL or lot No.	Section	Township	Range	Lot Idn	Feet from the	North/South line	Feet from the	East/West line	County
A	24	24-S	32-E		20	NORTH	330	EAST	LEA

Dedicated Acres	Joint or Infill	Consolidation Code	Order No.
160			

NO ALLOWABLE WILL BE ASSIGNED TO THIS COMPLETION UNTIL ALL INTERESTS HAVE BEEN CONSOLIDATED
OR A NON-STANDARD UNIT HAS BEEN APPROVED BY THE DIVISION



OPERATOR CERTIFICATION

I hereby certify that the information herein is true and complete to the best of my knowledge and belief, and that this organization either owns a working interest or unleased mineral interest in the land including the proposed bottom hole location or has a right to drill this well at this location pursuant to a contract with an owner of such mineral or working interest, or to a voluntary pooling agreement or a compulsory pooling order heretofore entered by the division.

Rebecca Deal 6/18/2019
Signature Date

Rebecca Deal, Regulatory Analyst
Printed Name

rebecca.deal@dvn.com
E-mail Address

SURVEYOR CERTIFICATION

I hereby certify that the well location shown on this plat was plotted from field notes of actual surveys made by me or under my supervision, and that the same is true and correct to the best of my belief.

5/2019

Date of Survey

Signature & Seal of Professional Surveyor



05/26/19

Certificate No. 22404 B. L. LAMAN

DRAWN BY: JR

Intent ☒ As Drilled ☐

API #
30-025-46876

Operator Name: DEVON ENERGY PRODUCTION COMPANY, LP.	Property Name: BELL LAKE 24 FED	Well Number 025H
-----------------------------------------------------------	------------------------------------	---------------------

Kick Off Point (KOP)

UL	Section 24	Township 24S	Range 32E	Lot	Feet 50	From N/S FSL	Feet 330	From E/W FEL	County LEA
Latitude 32.196024					Longitude -103.620897			NAD 83	

First Take Point (FTP)

UL P	Section 24	Township 24-S	Range 32-E	Lot	Feet 100	From N/S SOUTH	Feet 330	From E/W EAST	County LEA
Latitude 32.196186					Longitude 103.620894			NAD 83	

Last Take Point (LTP)

UL A	Section 24	Township 24-S	Range 32-E	Lot	Feet 100	From N/S NORTH	Feet 330	From E/W EAST	County LEA
Latitude 32.210159					Longitude 103.620878			NAD 83	

Is this well the defining well for the Horizontal Spacing Unit? ☐ N

Is this well an infill well? ☐ Y

If infill is yes please provide API if available, Operator Name and well number for Defining well for Horizontal Spacing Unit.

API #

Operator Name: DEVON ENERGY PRODUCTION CO.	Property Name: Bell Lake 24 Fed	Well Number 24H
-----------------------------------------------	------------------------------------	--------------------

KZ 06/29/2018