

District I
1625 N. French Dr., Hobbs, NM 88240
Phone: (575) 393-6161 Fax: (575) 393-0720
District II
811 S. First St., Artesia, NM 88210
Phone: (575) 748-1283 Fax: (575) 748-9720
District III
1000 Rio Brazos Road, Aztec, NM 87410
Phone: (505) 334-6178 Fax: (505) 334-6170
District IV
1220 S. St. Francis Dr., Santa Fe, NM 87505
Phone: (505) 476-3460 Fax: (505) 476-3462

State of New Mexico
Energy, Minerals & Natural Resources Department
OIL CONSERVATION DIVISION
1220 South St. Francis Dr.
Santa Fe, NM 87505

Form C-102
Revised August 1, 2011
Submit one copy to appropriate
District Office

☐ AMENDED REPORT

DEC 09 2019
RECEIVED

WELL LOCATION AND ACREAGE DEDICATION PLAT

¹ API Number 30-025-45781	² Pool Code 97293	³ Pool Name Ojo Chiso; Bone Spring, South
⁴ Property Code 322320	⁵ Property Name AIRSTREAM 24 STATE COM	⁶ Well Number 505H
⁷ OGRID No. 372165	⁸ Operator Name CENTENNIAL RESOURCE PRODUCTION, LLC	⁹ Elevation 3524.6'

¹⁰ Surface Location

UL or lot no.	Section	Township	Range	Lot Idn	Feet from the	North/South line	Feet from the	East/West line	County
P	13	22S	34E		600	SOUTH	838	EAST	LEA

¹¹ Bottom Hole Location If Different From Surface

UL or lot no.	Section	Township	Range	Lot Idn	Feet from the	North/South line	Feet from the	East/West line	County
P	25	22S	34E		100	SOUTH	1205	EAST	LEA
¹² Dedicated Acres 640	¹³ Joint or Infill	¹⁴ Consolidation Code	¹⁵ Order No.						

No allowable will be assigned to this completion until all interests have been consolidated or a non-standard unit has been approved by the division.

- ¹⁶
● = AS-DRILLED SHL
◇ = AS-DRILLED FTP/LTP
○ = AS-DRILLED BHL
▲ = SECTION CORNER LOCATED

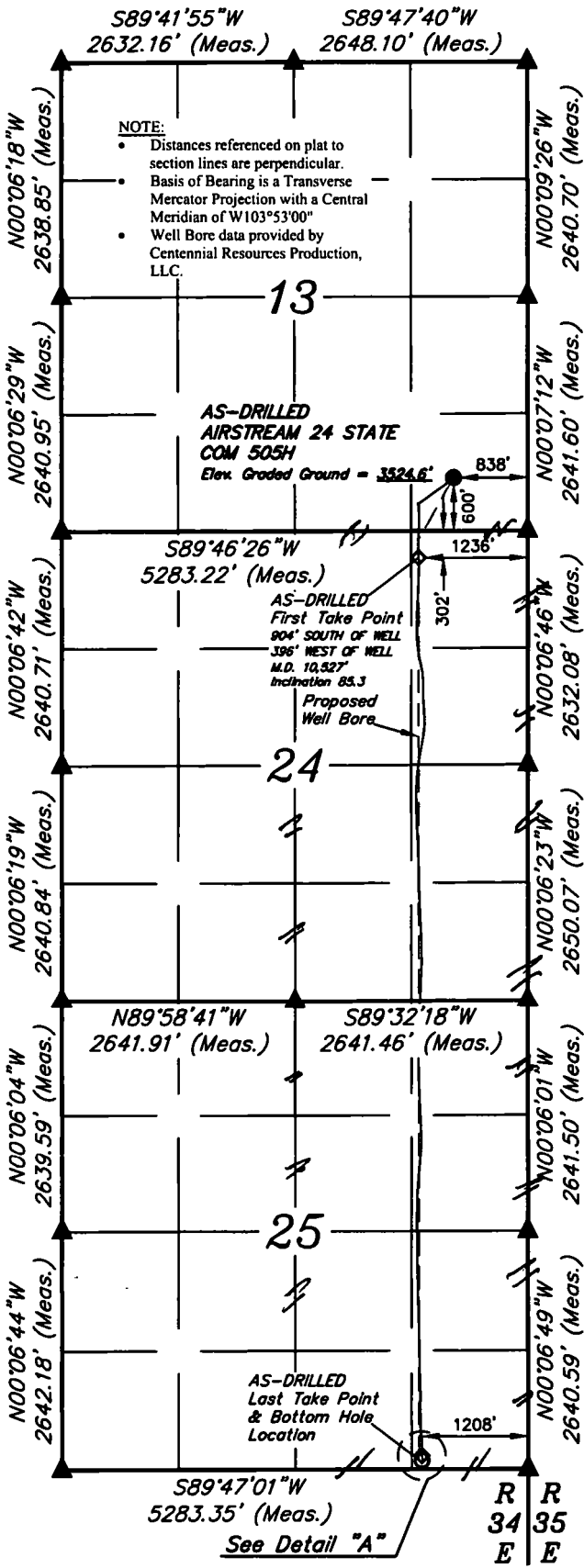
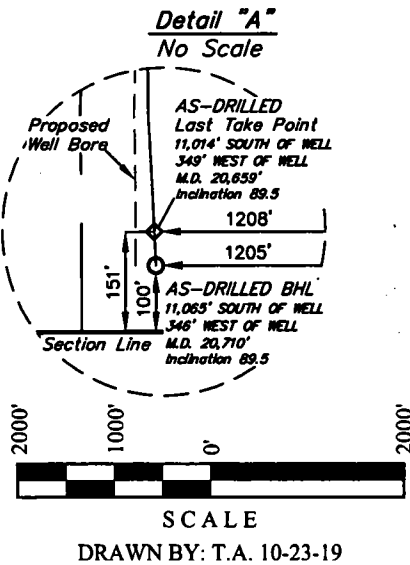
NAD 83 (AS-DRILLED SHL)
LATITUDE = 32°23'09.94" (32.386096°)
LONGITUDE = 103°25'04.09" (103.417801°)
STATE PLANE NAD 83 (N.M. EAST)
Y: 505402.52' X: 823950.92'
UTM, NAD 83 (ZONE 13)
Y: 11759601.11' X: 2128688.63'

NAD 83 (AS-DRILLED FTP)
LATITUDE = 32°23'01.02" (32.38617°)
LONGITUDE = 103°25'08.75" (103.419098°)
STATE PLANE NAD 83 (N.M. EAST)
Y: 504497.42' X: 823558.36'
UTM, NAD 83 (ZONE 13)
Y: 11758693.69' X: 2128301.77'

NAD 83 (AS-DRILLED LTP)
LATITUDE = 32°21'21.00" (32.355832°)
LONGITUDE = 103°25'08.71" (103.419086°)
STATE PLANE NAD 83 (N.M. EAST)
Y: 494389.00' X: 823648.33'
UTM, NAD 83 (ZONE 13)
Y: 11748587.32' X: 2128454.71'

NAD 83 (AS-DRILLED BHL)
LATITUDE = 32°21'20.49" (32.355692°)
LONGITUDE = 103°25'08.68" (103.419079°)
STATE PLANE NAD 83 (N.M. EAST)
Y: 494338.08' X: 823651.19'
UTM, NAD 83 (ZONE 13)
Y: 11748536.43' X: 2128457.89'

APPROXIMATE WELL BORE DISTANCE FROM FTP TO LTP	
Section 24	4,990.03
Section 25	5,129.33'
Total	10,119.36'



¹⁷ OPERATOR CERTIFICATION
I hereby certify that the information contained herein is true and complete to the best of my knowledge and belief, and that this organization either owns a working interest or unleased mineral interest in the land including the proposed bottom hole location or has a right to drill this well at this location pursuant to a contract with an owner of such a mineral or working interest, or to a voluntary pooling agreement or a compulsory pooling order heretofore entered by the division.

Signature: Sarah Ferreyros
Date: 12/4/19
Printed Name: Sarah.Ferreyros@cdevir.com
E-mail Address:

¹⁸ SURVEYOR CERTIFICATION
I hereby certify that the well location shown on this plat was plotted from field notes of actual surveys made by me or under my supervision, and that the same is true and correct to the best of my belief.

August 8, 2019
Date of Survey
Signature and Seal of Professional Surveyor:



Certificate Number:

Intent ☐ As Drilled ☒

API #
30-025-45781

Operator Name: Centennial Resource Production, LLC	Property Name: Airstream 24 State Com	Well Number 505H
---	--	---------------------

Kick Off Point (KOP)

UL A	Section 24	Township 22S	Range 34E	Lot A	Feet 302	From N/S N	Feet 1236	From E/W E	County Lea
Latitude 32.383617					Longitude -103.419098			NAD 83	

First Take Point (FTP)

UL A	Section 24	Township 22S	Range 34E	Lot A	Feet 302	From N/S N	Feet 1236	From E/W E	County Lea
Latitude 32.383617					Longitude -103.419098			NAD 83	

Last Take Point (LTP)

UL P	Section 25	Township 22S	Range 34E	Lot P	Feet 100	From N/S S	Feet 1205	From E/W E	County Lea
Latitude 32.355692					Longitude -103.419079			NAD 83	

Is this well the defining well for the Horizontal Spacing Unit? ☐ No

Is this well an infill well? ☐ Yes

If infill is yes please provide API if available, Operator Name and well number for Defining well for Horizontal Spacing Unit.

API #
30-025-45780

Operator Name: Centennial Resource Prod, LLC	Property Name: Airstream 24 State Com	Well Number 504H
---	--	---------------------

KZ 06/29/2018