

DISTRICT I
1625 N. FRANCES DR., BOBBS, NM 86240
Phone: (505) 833-4181 Fax: (505) 833-0720

DISTRICT II
811 S. FIRST ST., ARTESIA, NM 86210
Phone: (505) 748-1283 Fax: (505) 748-9720

DISTRICT III
1000 RIO BRAZOS RD., AZTEC, NM 87410
Phone: (505) 334-6178 Fax: (505) 334-6179

DISTRICT IV
1220 S. ST. FRANCIS DR., SANTA FE, NM 87505
Phone: (505) 476-3480 Fax: (505) 476-3482

State of New Mexico
Energy, Minerals & Natural Resources Department
OIL CONSERVATION DIVISION
1220 SOUTH ST. FRANCIS
Santa Fe, New Mexico 87505

Form C-102
Revised August 1, 2011
Submit one copy to appropriate
District Office

FEB 20 2020

☐ AMENDED REPORT

WELL LOCATION AND ACREAGE DEDICATION PLAT

API Number 30-025-46897	Pool Code 98117	Pool Name WC-025 G-09 5263504N; WC
Property Code 327175	Property Name COBBER 21-28 FED	Well Number 5H
GRID No. 6137	Operator Name DEVON ENERGY PRODUCTION COMPANY, L.P.	Elevation 3313.3'

Surface Location

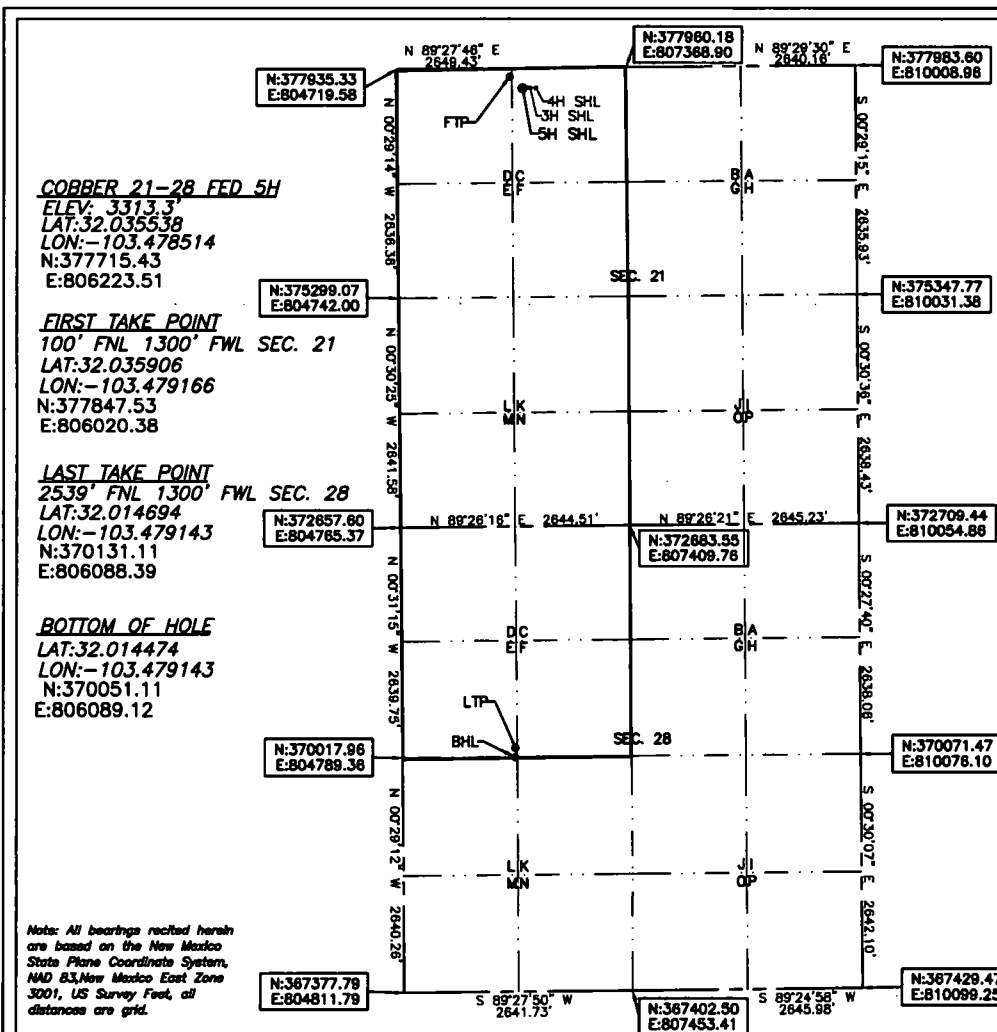
UL or lot No.	Section	Township	Range	Lot Idn	Feet from the	North/South line	Feet from the	East/West line	County
C	21	26-S	34-E		234	NORTH	1502	WEST	LEA

Bottom Hole Location If Different From Surface

UL or lot No.	Section	Township	Range	Lot Idn	Feet from the	North/South line	Feet from the	East/West line	County
E	28	26-S	34-E		2619	NORTH	1300	WEST	LEA

Dedicated Acres	Joint or Infill	Consolidation Code	Order No.
480			

NO ALLOWABLE WILL BE ASSIGNED TO THIS COMPLETION UNTIL ALL INTERESTS HAVE BEEN CONSOLIDATED
OR A NON-STANDARD UNIT HAS BEEN APPROVED BY THE DIVISION



OPERATOR CERTIFICATION

I hereby certify that the information herein is true and complete to the best of my knowledge and belief, and that this organization either owns a working interest or unleased mineral interest in the land including the proposed bottom hole location or has a right to drill this well at this location pursuant to a contract with an owner of such mineral or working interest, or to a voluntary pooling agreement or a compulsory pooling order heretofore entered by the division.

Rebecca Deal 9/30/2019
Signature Date

Rebecca Deal, Regulatory Analyst
Printed Name

rebecca.deal@dmn.com
E-mail Address

SURVEYOR CERTIFICATION

I hereby certify that the well location shown on this plat was plotted from field notes of actual surveys made by me or under my supervision, and that the same is true and correct to the best of my belief.

07/2019

Date of Survey

Signature & Seal of Professional Surveyor



08/23/19

Certificate No. 22404 B.L. LAMAN
DRAWN BY: CM

Intent ☒ As Drilled ☐

API #
70-025-46897

Operator Name: DEVON ENERGY PRODUCTION COMPANY, LP.	Property Name: COBBER 21-28 FED	Well Number 5H
---	------------------------------------	-------------------

Kick Off Point (KOP)

UL	Section 21	Township 26S	Range 34E	Lot	Feet 50	From N/S FNL	Feet 1300	From E/W FWL	County LEA
Latitude 32.036048					Longitude -103.479161			NAD 83	

First Take Point (FTP)

UL D	Section 21	Township 26S	Range 34E	Lot	Feet 100	From N/S NORTH	Feet 1300	From E/W WEST	County LEA
Latitude 32.035906					Longitude 103.479166			NAD 83	

Last Take Point (LTP)

UL E	Section 28	Township 26S	Range 34E	Lot	Feet 2539	From N/S NORTH	Feet 1300	From E/W WEST	County LEA
Latitude 32.014694					Longitude 103.479143			NAD 83	

Is this well the defining well for the Horizontal Spacing Unit? ☐ N

Is this well an infill well? ☐ Y

If infill is yes please provide API if available, Operator Name and well number for Defining well for Horizontal Spacing Unit.

API #

Operator Name: DEVON ENERGY PRODUCTION CO., L.P.	Property Name: COBBER 21-18 FED	Well Number 10H
--	------------------------------------	--------------------

KZ 06/29/2018