

DISTRICT I  
1825 N. FRANCHISE DR., HOBBBS, NM 88240  
Phone: (505) 834-6181 Fax: (505) 834-6170

DISTRICT II  
811 S. FIRST ST., ARTESIA, NM 88210  
Phone: (505) 740-1223 Fax: (505) 740-0720

DISTRICT III  
1000 RIO BRAZOS RD., AZTEC, NM 87410  
Phone: (505) 834-6178 Fax: (505) 834-6170

DISTRICT IV  
1820 S. ST. FRANCIS DR., SANTA FE, NM 87505  
Phone: (505) 476-3460 Fax: (505) 476-3462

State of New Mexico  
Energy, Minerals & Natural Resources Department  
**OIL CONSERVATION DIVISION**  
1220 SOUTH ST. FRANCIS DR.  
Santa Fe, New Mexico 87505

Form C-102  
Revised August 1, 2011  
Submit one copy to appropriate  
District Office

☐ AMENDED REPORT

WELL LOCATION AND ACREAGE DEDICATION

API Number <b>30-025-46895</b>	Pool Code <b>98117</b>	Well Name <b>UC-025 G-09 9263404N WC</b>
Property Code <b>327175</b>	Property Name <b>COBBER 21-28 FED</b>	Well Number <b>12H</b>
GRID No. <b>6137</b>	Operator Name <b>DEVON ENERGY PRODUCTION COMPANY, L.P.</b>	Elevation <b>3306.0'</b>

Surface Location

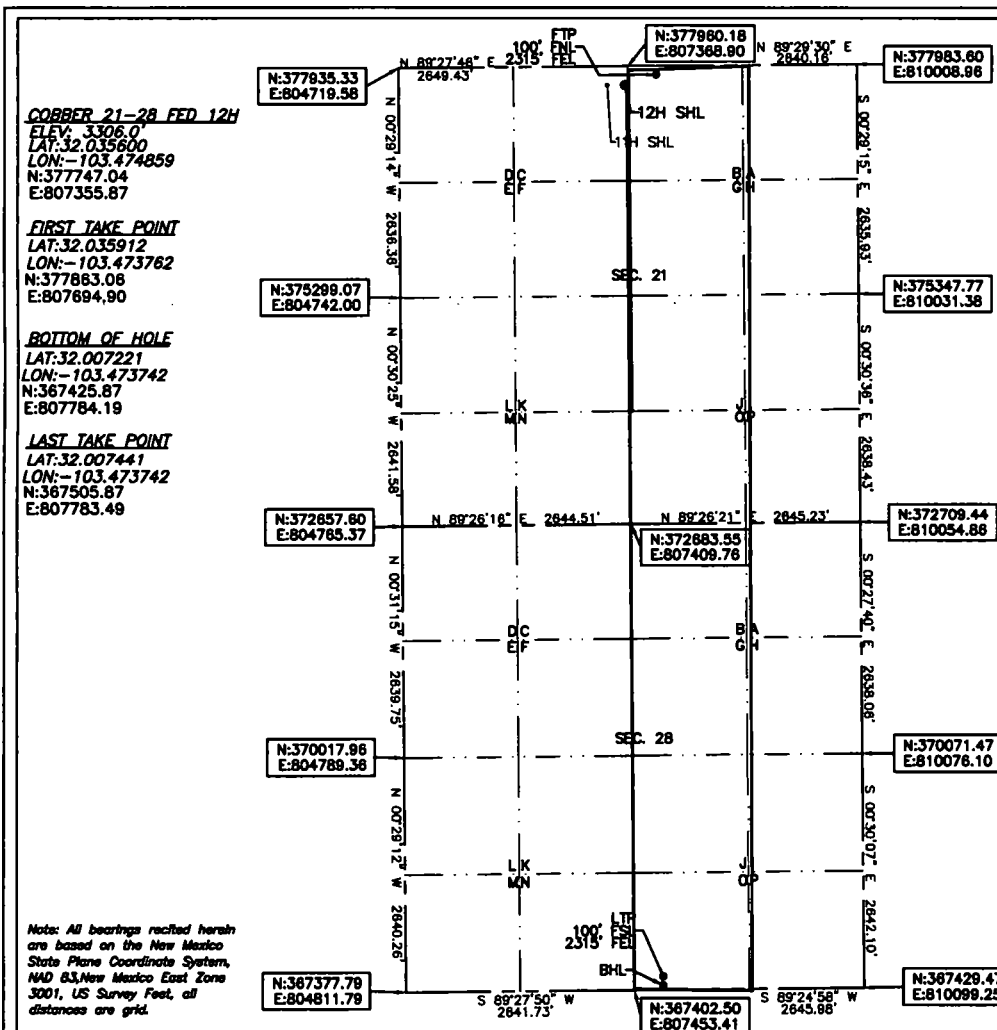
UL or lot No.	Section	Township	Range	Lot Idn	Feet from the	North/South line	Feet from the	East/West line	County
C	21	26-S	34-E		213	NORTH	2635	WEST	LEA

Bottom Hole Location If Different From Surface

UL or lot No.	Section	Township	Range	Lot Idn	Feet from the	North/South line	Feet from the	East/West line	County
O	28	26-S	34-E		20	SOUTH	2315	EAST	LEA

Dedicated Acres <b>320</b>	Joint or Infill	Consolidation Code	Order No.
-------------------------------	-----------------	--------------------	-----------

NO ALLOWABLE WILL BE ASSIGNED TO THIS COMPLETION UNTIL ALL INTERESTS HAVE BEEN CONSOLIDATED  
OR A NON-STANDARD UNIT HAS BEEN APPROVED BY THE DIVISION



OPERATOR CERTIFICATION

I hereby certify that the information herein is true and complete to the best of my knowledge and belief, and that this organization either owns a working interest or unleased mineral interest in the land including the proposed bottom hole location or has a right to drill this well at this location pursuant to a contract with an owner of such mineral or working interest, or to a voluntary pooling agreement or a compulsory pooling order heretofore entered by the division.

**Rebecca Deal** 10/2/2019  
Signature Date  
**Rebecca Deal, Regulatory Analyst**  
Printed Name  
**rebecca.deal@dvn.com**  
E-mail Address

SURVEYOR CERTIFICATION

I hereby certify that the well location shown on this plat was plotted from field notes of actual surveys made by me or under my supervision, and that the same is true and correct to the best of my belief.

12/2018

Date of Survey

Signature & Seal of Professional Surveyor



10/1/19

Certificate No. 22404 B. L. LAMAN

DRAWN BY: CM

Intent ☒ As Drilled ☐

API # <b>30-025-46895</b>			
Operator Name: <b>DEVON ENERGY PRODUCTION COMPANY, LP.</b>		Property Name: <b>COBBER 21-28 FED</b>	Well Number <b>12H</b>

Kick Off Point (KOP)

UL	Section <b>21</b>	Township <b>26S</b>	Range <b>34E</b>	Lot	Feet <b>50</b>	From N/S <b>FNL</b>	Feet <b>2315</b>	From E/W <b>FEL</b>	County <b>LEA</b>
Latitude <b>32.036041</b>					Longitude <b>-103.473758</b>			NAD <b>83</b>	

First Take Point (FTP)

UL <b>B</b>	Section <b>21</b>	Township <b>26</b>	Range <b>34</b>	Lot	Feet <b>100</b>	From N/S <b>NORTH</b>	Feet <b>2315</b>	From E/W <b>EAST</b>	County <b>LEA</b>
Latitude <b>32.035912</b>					Longitude <b>103.473762</b>			NAD <b>83</b>	

Last Take Point (LTP)

UL <b>O</b>	Section <b>28</b>	Township <b>26</b>	Range <b>34</b>	Lot	Feet <b>100</b>	From N/S <b>SOUTH</b>	Feet <b>2315</b>	From E/W <b>EAST</b>	County <b>LEA</b>
Latitude <b>32.007441</b>					Longitude <b>103.473742</b>			NAD <b>83</b>	

Is this well the defining well for the Horizontal Spacing Unit? ☐ N

Is this well an infill well? ☐ Y

If infill is yes please provide API if available, Operator Name and well number for Defining well for Horizontal Spacing Unit.

API #			
Operator Name: <b>DEVON ENERGY PRODUCTION CO., L.P.</b>		Property Name: <b>COBBER 21-28 FED</b>	Well Number <b>8H</b>

KZ 06/29/2018