

District I  
1625 N. French Dr., Hobbs, NM 88240  
Phone: (575) 393-6161 Fax: (575) 393-0720  
District II  
811 S. First St., Artesia, NM 88210  
Phone: (575) 748-1283 Fax: (575) 748-9720  
District III  
1000 Rio Brazos Road, Aztec, NM 87410  
Phone: (505) 334-6178 Fax: (505) 334-6170  
District IV  
1220 S. St. Francis Dr., Santa Fe, NM 87505  
Phone: (505) 476-3460 Fax: (505) 476-3462

State of New Mexico  
Energy, Minerals & Natural Resources  
Department  
OIL CONSERVATION DIVISION  
1220 South St. Francis Dr.  
Santa Fe, NM 87505

**HOBBS OCD**

Submit one copy to appropriate

District Office

**RECEIVED**

☐ AMENDED REPORT

**WELL LOCATION AND ACREAGE DEDICATION PLAT**

<sup>1</sup> API Number <b>30-025- 46906</b>	<sup>2</sup> Pool Code <b>97903</b>	<sup>3</sup> Pool Name <b>WC-025 G-08 S253235G; Lwr Bone Spring</b>
<sup>4</sup> Property Code <b>325949</b>	<sup>5</sup> Property Name <b>VALIANT 24 FED COM</b>	<sup>6</sup> Well Number <b>#601H</b>
<sup>7</sup> GRID No. <b>7377</b>	<sup>8</sup> Operator Name <b>EOG RESOURCES, INC.</b>	<sup>9</sup> Elevation <b>3440'</b>

<sup>10</sup>Surface Location

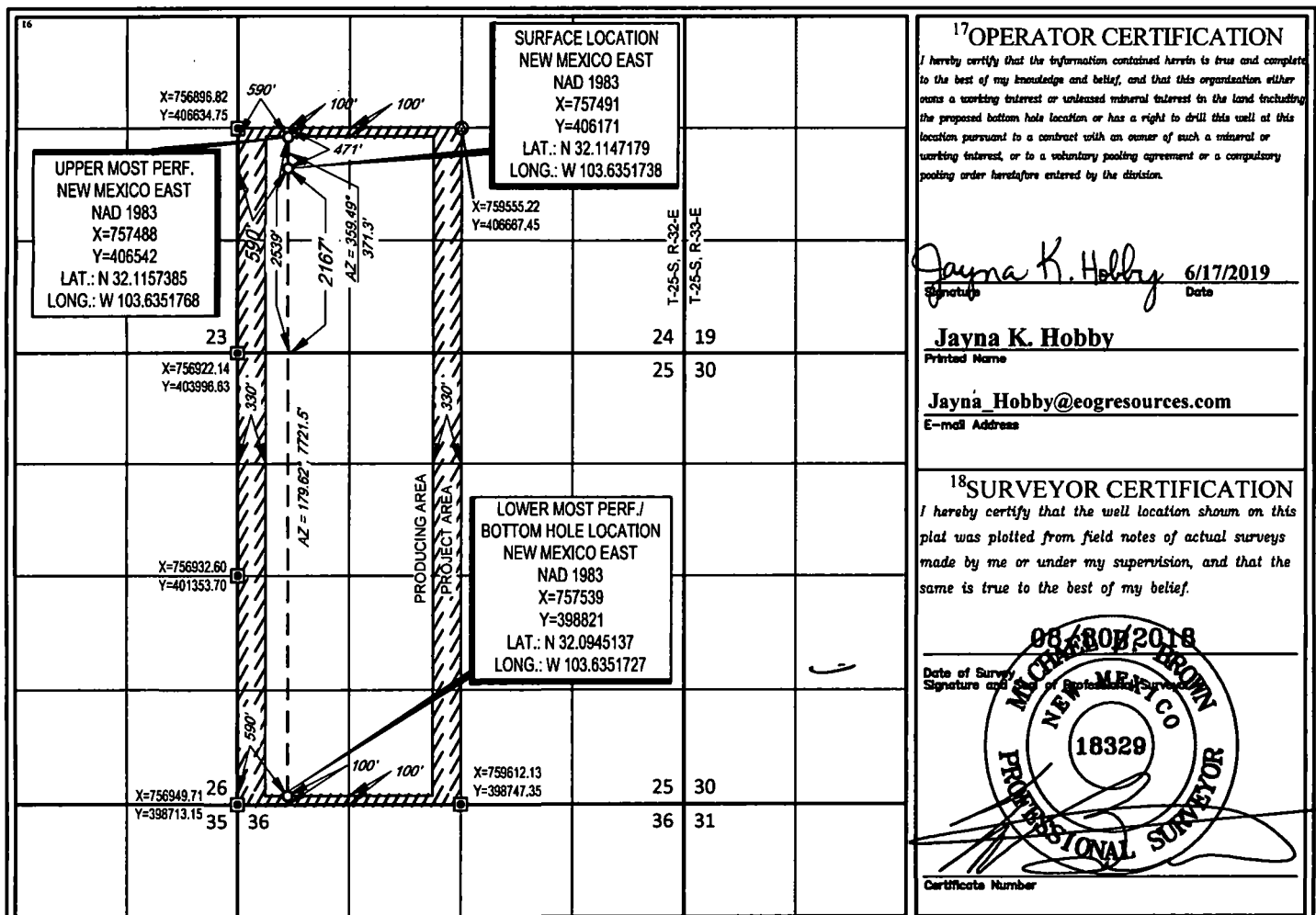
UL or lot no. <b>L</b>	Section <b>24</b>	Township <b>25-S</b>	Range <b>32-E</b>	Lot Idn <b>-</b>	Feet from the <b>2167'</b>	North/South line <b>SOUTH</b>	Feet from the <b>590'</b>	East/West line <b>WEST</b>	County <b>LEA</b>
---------------------------	----------------------	-------------------------	----------------------	---------------------	-------------------------------	----------------------------------	------------------------------	-------------------------------	----------------------

<sup>11</sup>Bottom Hole Location If Different From Surface

UL or lot no. <b>M</b>	Section <b>25</b>	Township <b>25-S</b>	Range <b>32-E</b>	Lot Idn <b>-</b>	Feet from the <b>100'</b>	North/South line <b>SOUTH</b>	Feet from the <b>590'</b>	East/West line <b>WEST</b>	County <b>LEA</b>
---------------------------	----------------------	-------------------------	----------------------	---------------------	------------------------------	----------------------------------	------------------------------	-------------------------------	----------------------

<sup>12</sup> Dedicated Acres <b>480.00</b>	<sup>13</sup> Joint or Infill	<sup>14</sup> Consolidation Code	<sup>15</sup> Order No.
--	-------------------------------	----------------------------------	-------------------------

No allowable will be assigned to this completion until all interests have been consolidated or a non-standard unit has been approved by the division.



Intent ☒ As Drilled ☐

API # 30-025-			
Operator Name: EOG Resources, Inc.		Property Name: Valiant 24 Fed Com	Well Number 601H

Kick Off Point (KOP)

UL L	Section 24	Township 25S	Range 32E	Lot	Feet 2599	From N/S S	Feet 590	From E/W W	County Lea
Latitude N 32.1158759					Longitude W -103.6351749				NAD 83

First Take Point (FTP)

UL L	Section 24	Township 25S	Range 32E	Lot	Feet 2539	From N/S S	Feet 590	From E/W W	County Lea
Latitude N 32.1157385					Longitude W -103.6351768				NAD 83

Last Take Point (LTP)

UL M	Section 25	Township 25S	Range 32E	Lot	Feet 100	From N/S S	Feet 590	From E/W W	County Lea
Latitude N 32.0945137					Longitude W -103.6351727				NAD 83

Is this well the defining well for the Horizontal Spacing Unit? ☐ No

Is this well an infill well? ☐ Yes

If infill is yes please provide API if available, Operator Name and well number for Defining well for Horizontal Spacing Unit.

API # 30-025-			
Operator Name: EOG Resources, Inc.		Property Name: Valiant 24 Fed Com	Well Number 602H

KZ 06/29/2018