

District I  
1625 N. French Dr., Hobbs, NM 88240  
Phone: (575) 393-6161 Fax: (575) 393-0720  
District II  
811 S. First St., Artesia, NM 88210  
Phone: (575) 748-1283 Fax: (575) 748-9720  
District III  
1000 Rio Brazos Road, Aztec, NM 87410  
Phone: (505) 334-6178 Fax: (505) 334-6170  
District IV  
1220 S. St. Francis Dr., Santa Fe, NM 87505  
Phone: (505) 476-3460 Fax: (505) 476-3462

State of New Mexico  
Energy, Minerals & Natural Resources  
Department  
OIL CONSERVATION DIVISION  
1220 South St. Francis Dr.  
Santa Fe, NM 87505

FORM C-102  
Revised August 1, 2011  
Submit one copy to appropriate  
District Office

**HOBBS OCD**

FEB 19 2020

☐ AMENDED REPORT

**RECEIVED**

WELL LOCATION AND ACREAGE DEDICATION PLAN

<sup>1</sup> API Number <b>30-025-44754</b>	<sup>2</sup> Pool Code <b>98097</b>	<sup>3</sup> Pool Name <b>SANDERS TANK; UPPER WOLFCAMP</b>
<sup>4</sup> Property Code <b>321383</b>	<sup>5</sup> Property Name <b>PEACHTREE 24 FED COM</b>	<sup>6</sup> Well Number <b>#710H</b>
<sup>7</sup> OGRID No. <b>7377</b>	<sup>8</sup> Operator Name <b>EOG RESOURCES, INC.</b>	<sup>9</sup> Elevation <b>3345'</b>

<sup>10</sup>Surface Location

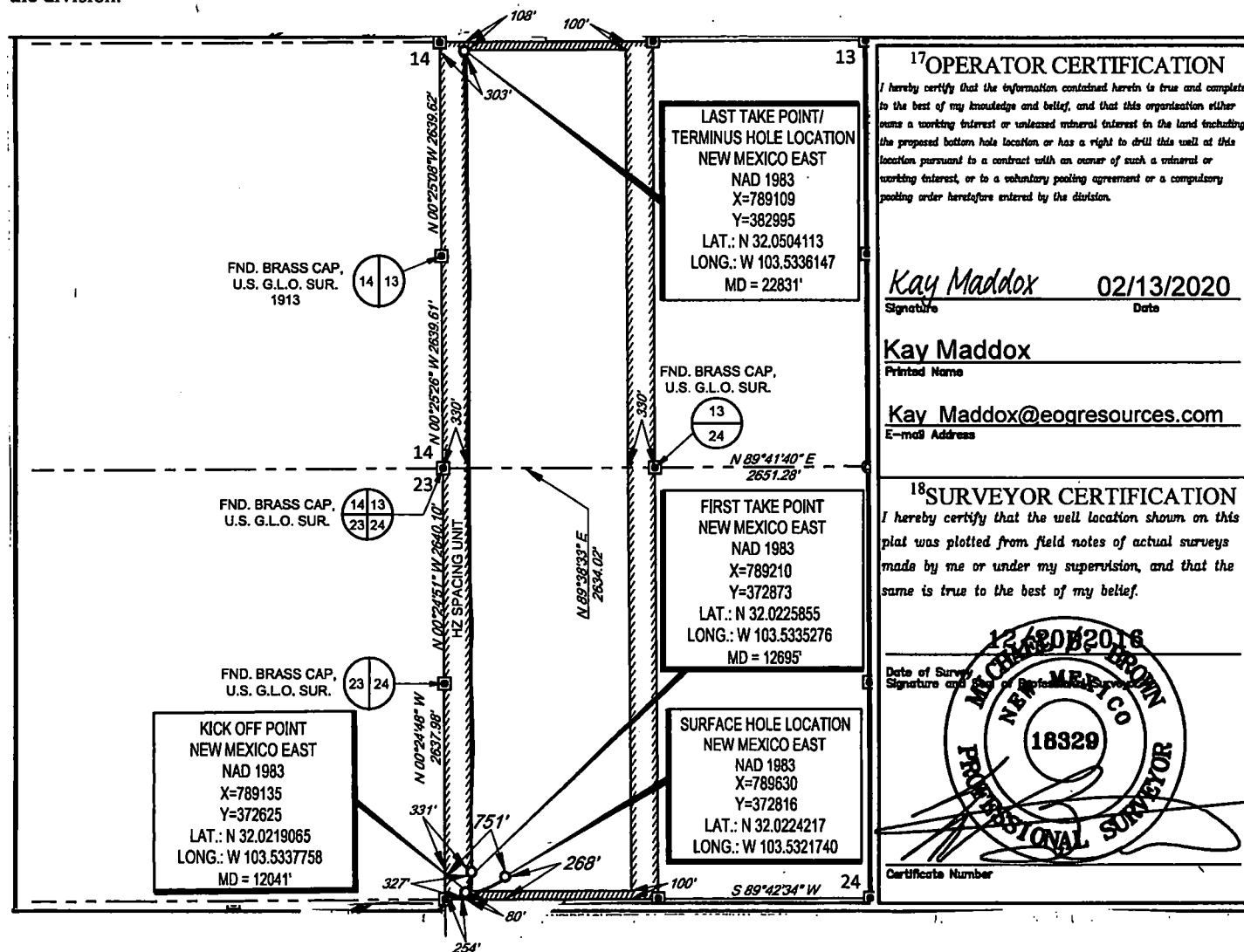
UL or lot no.	Section	Township	Range	Lot Idn	Feet from the	North/South line	Feet from the	East/West line	County
<b>M</b>	<b>24</b>	<b>26-S</b>	<b>33-E</b>	<b>-</b>	<b>268'</b>	<b>SOUTH</b>	<b>751'</b>	<b>WEST</b>	<b>LEA</b>

<sup>11</sup>Bottom Hole Location If Different From Surface

UL or lot no.	Section	Township	Range	Lot Idn	Feet from the	North/South line	Feet from the	East/West line	County
<b>D</b>	<b>13</b>	<b>26-S</b>	<b>33-E</b>	<b>-</b>	<b>108'</b>	<b>NORTH</b>	<b>303'</b>	<b>WEST</b>	<b>LEA</b>

<sup>12</sup> Dedicated Acres <b>640.00</b>	<sup>13</sup> Joint or Infill	<sup>14</sup> Consolidation Code	<sup>15</sup> Order No.
--	-------------------------------	----------------------------------	-------------------------

No allowable will be assigned to this completion until all interests have been consolidated or a non-standard unit has been approved by the division.



<sup>17</sup>OPERATOR CERTIFICATION

I hereby certify that the information contained herein is true and complete to the best of my knowledge and belief, and that this organization either owns a working interest or unless mineral interest in the land including the proposed bottom hole location or has a right to drill this well at this location pursuant to a contract with an owner of such a mineral or working interest, or to a voluntary pooling agreement or a compulsory pooling order heretofore entered by the division.

*Kay Maddox* 02/13/2020  
Signature Date

**Kay Maddox**  
Printed Name

**Kay Maddox@eogresources.com**  
E-mail Address

<sup>18</sup>SURVEYOR CERTIFICATION

I hereby certify that the well location shown on this plat was plotted from field notes of actual surveys made by me or under my supervision, and that the same is true to the best of my belief.

Date of Survey  
Signature and Seal of Professional Surveyor

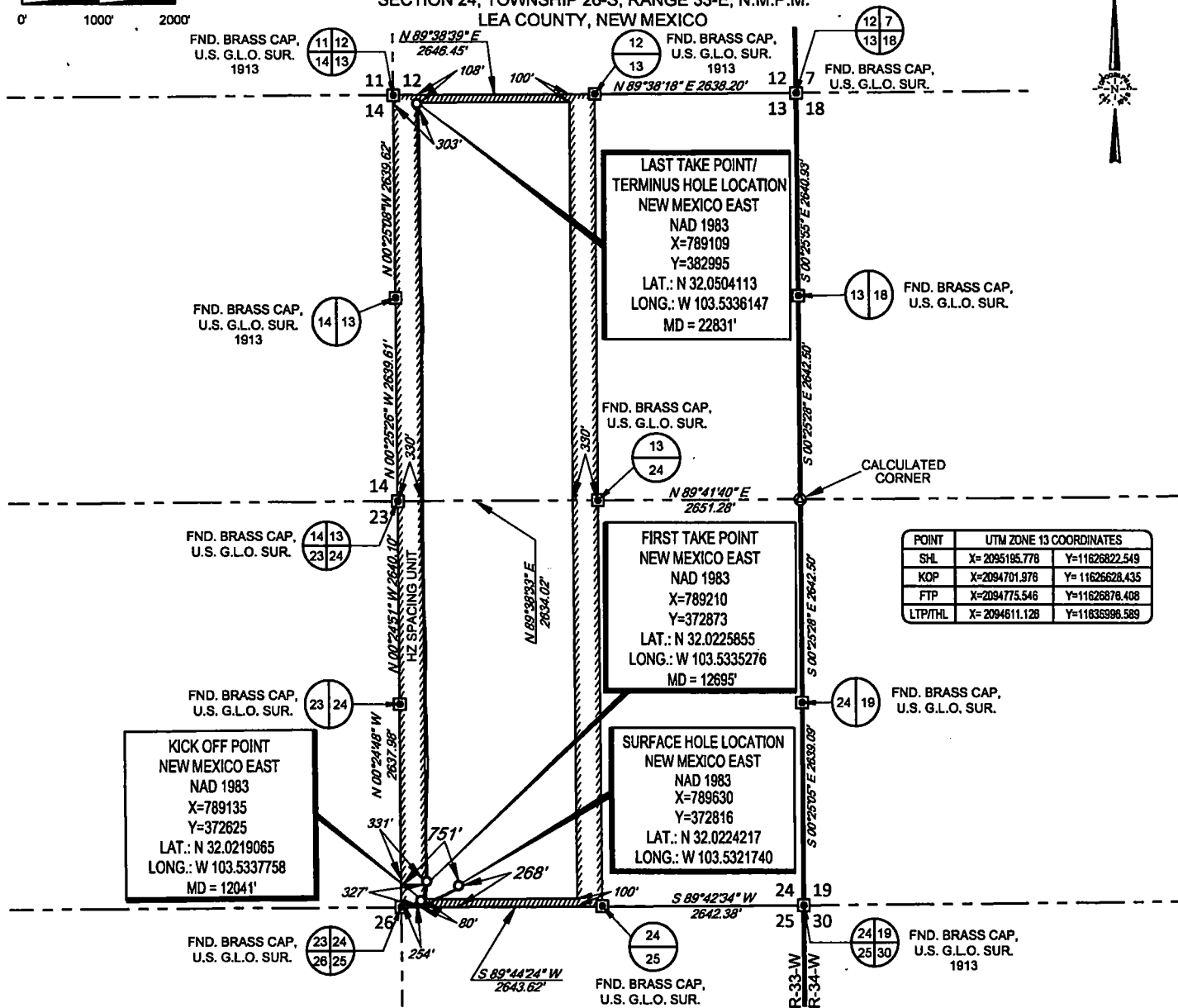
**12 FEB 20 2020**  
**NEW MEXICO**  
**18329**  
**PROFESSIONAL SURVEYOR**

Certificate Number

SCALE: 1" = 2000'

0' 1000' 2000'

SECTION 24, TOWNSHIP 26-S, RANGE 33-E, N.M.P.M.  
LEA COUNTY, NEW MEXICO

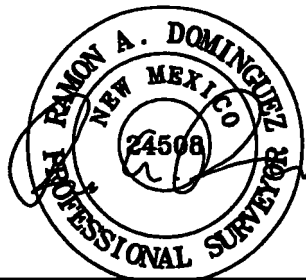


LEASE NAME & WELL NO.: PEACHTREE 24 FED COM #710H  
SECTION 24 TWP 26-S RGE 33-E SURVEY N.M.P.M.  
COUNTY LEA STATE NM ELEVATION 3344'  
DESCRIPTION 268' FSL & 751' FWL



**TOPOGRAPHIC**  
LOYALTY INNOVATION LEGACY

1400 EVERMAN PARKWAY, Ste. 148 • FT. WORTH, TEXAS 76140  
TELEPHONE: (817) 744-7512 • FAX (817) 744-7554  
2803 NORTH BIG SPRING • MIDLAND, TEXAS 79705  
TELEPHONE: (432) 682-1653 OR (800) 787-1653 • FAX (432) 682-1743  
WWW.TOPOGRAPHIC.COM



Ramon A. Dominguez, P.S. No. 24508  
JANUARY 02, 2020

**Geog resources, Inc.**

PEACHTREE 24 FED COM  
#710H  
AS-COMplete

REVISION:

DATE: 1/02/2020

FILE: AD PEACHTREE\_24\_FED\_COM\_710H

DRAWN BY: JLS

SHEET: 1 OF 1

NOTES:

1. ORIGINAL DOCUMENT SIZE: 8.5" X 11"
2. ALL BEARINGS, DISTANCES, AND COORDINATE VALUES CONTAINED HEREIN ARE GRID BASED UPON THE NEW MEXICO COORDINATE SYSTEM OF 1983, EAST ZONE, U.S. SURVEY FEET.
3. THIS WELL LOCATION SHOWN HEREON HAS BEEN SURVEYED ON THE GROUND UNDER MY SUPERVISION AND PREPARED ACCORDING TO THE EVIDENCE FOUND AT THE TIME OF SURVEY, AND DATA PROVIDED BY EOG RESOURCES, INC. THIS CERTIFICATION IS MADE AND LIMITED TO THOSE PERSONS OR ENTITIES SHOWN ON THE FACE OF THIS PLAT AND IS NON-TRANSFERABLE. THIS SURVEY IS CERTIFIED FOR THIS TRANSACTION ONLY.

Intent : ☐ As Drilled ☒ XXX

API # 30-025-44754			
Operator Name: EOG RESOURCES, INC		Property Name: PEACHTREE 24 FEDERAL COM	Well Number 710H

Kick Off Point (KOP)

UL M	Section 24	Township 26S	Range 33E	Lot	Feet 80	From N/S SOUTH	Feet 254	From E/W WEST	County LEA
Latitude 32.0219065					Longitude 103.5337758			NAD 1983	

First Take Point (FTP)

UL M	Section 24	Township 26S	Range 33E	Lot	Feet 327	From N/S SOUTH	Feet 331	From E/W WEST	County LEA
Latitude 32.0225855					Longitude 103.5335276			NAD 1983	

Last Take Point (LTP)

UL D	Section 13	Township 26S	Range 33E	Lot	Feet 108	From N/S NORTH	Feet 303	From E/W WEST	County LEA
Latitude 32.0504113					Longitude 103.5336147			NAD 1983	

Is this well the defining well for the Horizontal Spacing Unit? ☐ NO

Is this well an infill well? ☐ YES

If infill is yes please provide API if available, Operator Name and well number for Defining well for Horizontal Spacing Unit.

API # 30-025-44755			
Operator Name: EOG RESOURCES, INC		Property Name: PEACHTREE 24 FEDERAL COM	Well Number 708H

KZ 06/29/2018