

District I  
1625 N. French Dr., Hobbs, NM 88240  
Phone: (575) 393-6161 Fax: (575) 393-0720  
District II  
811 S. First St., Artesia, NM 88210  
Phone: (575) 748-1283 Fax: (575) 748-9720  
District III  
1000 Rio Brazos Road, Aztec, NM 87410  
Phone: (505) 334-6178 Fax: (505) 334-6170  
District IV  
1220 S. St. Francis Dr., Santa Fe, NM 87505  
Phone: (505) 476-3460 Fax: (505) 476-3462

State of New Mexico  
Energy, Minerals & Natural Resources Department  
OIL CONSERVATION DIVISION  
1220 South St. Francis Dr.  
Santa Fe, NM 87505

Form C-102  
Revised August 1, 2011  
Submit one copy to appropriate  
District Office

FEB 19 2020

RECEIVED

AMENDED REPORT

WELL LOCATION AND ACREAGE DEDICATION PLAT

<sup>1</sup> API Number <b>30-025-45543</b>		<sup>2</sup> Pool Code <b>98094</b>		<sup>3</sup> Pool Name <b>BOBCAT DRAW; UPPER WC</b>	
<sup>4</sup> Property Code <b>319566</b>		<sup>5</sup> Property Name <b>JAYHAWK 6-7 FED</b>			<sup>6</sup> Well Number <b>11H</b>
<sup>7</sup> OGRID No. <b>6137</b>		<sup>8</sup> Operator Name <b>DEVON ENERGY PRODUCTION COMPANY, L.P.</b>			<sup>9</sup> Elevation <b>3315.1</b>

<sup>10</sup> Surface Location

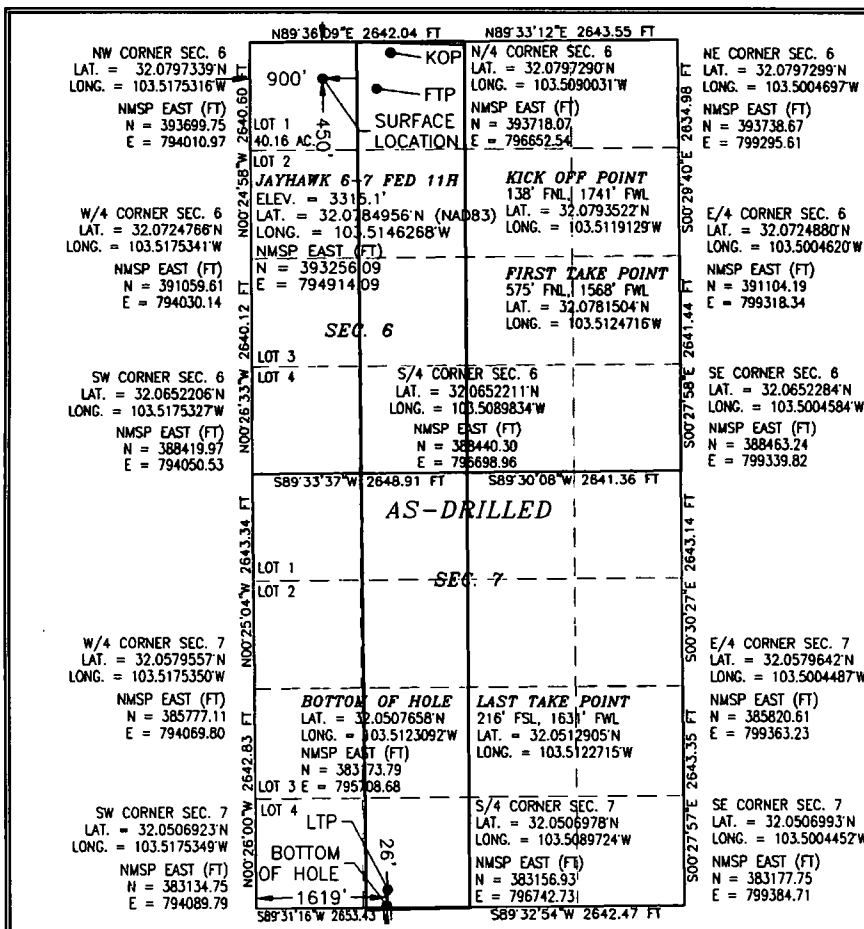
UL or lot no.	Section	Township	Range	Lot Idn	Feet from the	North/South line	Feet from the	East/West line	County
<b>1</b>	<b>6</b>	<b>26 S</b>	<b>34 E</b>		<b>450</b>	<b>NORTH</b>	<b>900</b>	<b>WEST</b>	<b>LEA</b>

<sup>11</sup> Bottom Hole Location If Different From Surface

UL or lot no.	Section	Township	Range	Lot Idn	Feet from the	North/South line	Feet from the	East/West line	County
<b>N</b>	<b>7</b>	<b>26 S</b>	<b>34 E</b>		<b>26</b>	<b>SOUTH</b>	<b>1619</b>	<b>WEST</b>	<b>LEA</b>

<sup>12</sup> Dedicated Acres <b>320</b>	<sup>13</sup> Joint or Infill	<sup>14</sup> Consolidation Code	<sup>15</sup> Order No.
---	-------------------------------	----------------------------------	-------------------------

No allowable will be assigned to this completion until all interests have been consolidated or a non-standard unit has been approved by the division.



<sup>16</sup> OPERATOR CERTIFICATION

I hereby certify that the information contained herein is true and complete to the best of my knowledge and belief, and that this organization either owns a working interest or unleased mineral interest in the land including the proposed bottom hole location or has a right to drill this well at this location pursuant to a contract with an owner of such a mineral or working interest, or to a voluntary pooling agreement or a compulsory pooling order heretofore entered by the division.

Signature: *Rebecca Deal* Date: **2/13/2020**

Printed Name: **Rebecca Deal, Regulatory Analyst**

E-mail Address: **rebecca.deal@dvn.com**

<sup>17</sup> SURVEYOR CERTIFICATION

I hereby certify that the well location shown on this plat was plotted from field notes of actual surveys made by me or under my supervision, and that the same is true and correct to the best of my belief.

JULY 29, 2018

Date of Survey

Signature and Seal of Professional Surveyor

Certificate Number FILIMON F. JARAMILLO, PLS 12797

SURVEY NO. 6362A

Intent ☐ As Drilled ☒

API # 30-025-45543			
Operator Name: DEVON ENERGY PRODUCTION COMPANY, L.P.		Property Name: JAYHAWK 6-7 FED	Well Number 11H

Kick Off Point (KOP)

UL C	Section 6	Township 26S	Range 34E	Lot	Feet 138	From N/S NORTH	Feet 1741	From E/W WEST	County LEA
Latitude 32.0793522					Longitude 103.5119129				NAD 83

First Take Point (FTP)

UL C	Section 6	Township 26S	Range 34E	Lot	Feet 575	From N/S NORTH	Feet 1568	From E/W WEST	County LEA
Latitude 32.0781504					Longitude 103.5124716				NAD 83

Last Take Point (LTP)

UL N	Section 7	Township 26S	Range 34E	Lot	Feet 216	From N/S SOUTH	Feet 1631	From E/W WEST	County LEA
Latitude 32.0512905					Longitude 103.5122715				NAD 83

Is this well the defining well for the Horizontal Spacing Unit? ☒

Is this well an infill well? ☐

If infill is yes please provide API if available, Operator Name and well number for Defining well for Horizontal Spacing Unit.

API #			
Operator Name:		Property Name:	Well Number

KZ 06/29/2018