

District I
1625 N. French Dr., Hobbs, NM 88240
Phone: (575) 393-6161 Fax: (575) 393-0720
District II
811 S. First St., Artesia, NM 88210
Phone: (575) 748-1283 Fax: (575) 748-9720
District III
1000 Rio Brazos Road, Aztec, NM 87410
Phone: (505) 334-6178 Fax: (505) 334-6170
District IV
1220 S. St. Francis Dr., Santa Fe, NM 87505
Phone: (505) 476-3460 Fax: (505) 476-3462

State of New Mexico
Energy, Minerals & Natural Resources Department
OIL CONSERVATION DIVISION
1220 South St. Francis Dr.
Santa Fe, NM 87505

Form C-102
Revised August 1, 2011
Submit one copy to appropriate
District Office

HOBBS OCD ☐ AMENDED REPORT
FEB 26 2020

WELL LOCATION AND ACREAGE DEDICATION

1 API Number 30-025-46400	2 Pool Code 96553	3 Pool Name Ojo Chiso; Bone Spring
4 Property Code 326030	5 Property Name QUESO BLANCO 13 STATE COM	6 Well Number 603H
7 OGRID No. 372165	8 Operator Name CENTENNIAL RESOURCE PRODUCTION, LLC	9 Elevation 3506.8'

10 Surface Location									
UL or lot no. N	Section 13	Township 22S	Range 34E	Lot Idn	Feet from the 1225	North/South line SOUTH	Feet from the 1562	East/West line WEST	County LEA

11 Bottom Hole Location If Different From Surface									
UL or lot no. K	Section 12	Township 22S	Range 34E	Lot Idn	Feet from the 2534	North/South line SOUTH	Feet from the 2326	East/West line WEST	County LEA
12 Dedicated Acres 480	13 Joint or Infill	14 Consolidation Code	15 Order No. NSL-7975						

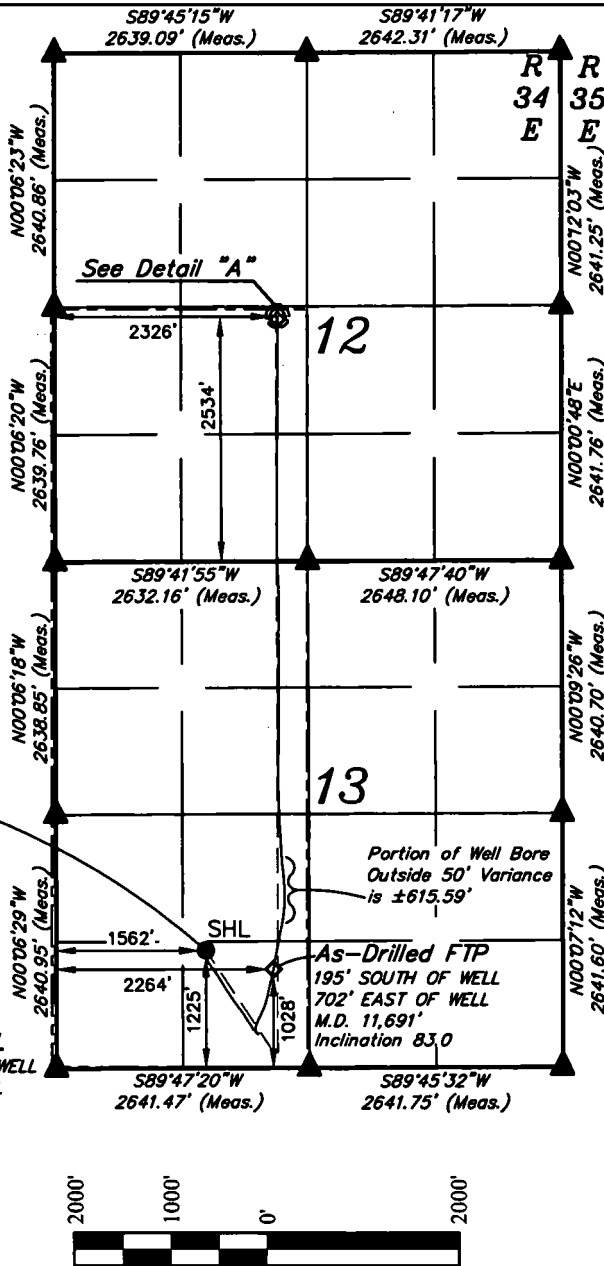
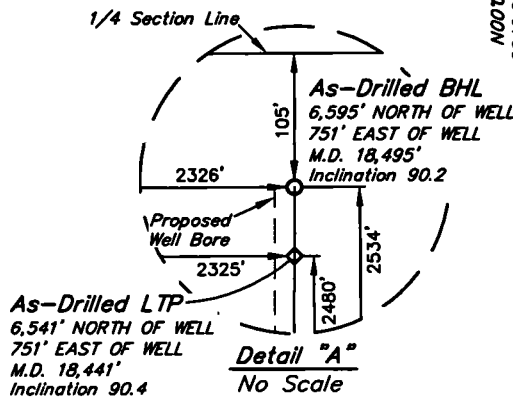
No allowable will be assigned to this completion until all interests have been consolidated or a non-standard unit has been approved by the division.

- 16
- = AS-DRILLED SURFACE HOLE LOCATION
 - ◆ = AS-DRILLED FTP/LTP
 - = AS-DRILLED BOTTOM HOLE LOCATION
 - ▲ = SECTION CORNER LOCATED

- NOTE:
- Distances referenced on plat to section lines are perpendicular.
 - Basis of Bearing is a Transverse Mercator Projection with a Central Meridian of W103°53'00" (NAD 83)
 - Wellbore data provided by Centennial Resource Production, LLC.

APPROXIMATE WELL BORE DISTANCE FROM FTP TO LTP	
SECTION 12	2,480.10'
SECTION 13	4,268.73'
TOTAL	6,748.83'

AS-DRILLED
QUESO BLANCO 13
STATE COM 603H
Elev. Graded
Ground = 3506.8'



SCALE
DRAWN BY: R.J. 01-16-20

NAD 83 (AS-DRILLED SHL) LATITUDE = 32°23'16.14" (32.387817°) LONGITUDE = 103°25'37.68" (103.427134°) STATE PLANE NAD 83 (N.M. EAST) Y: 506004.17' X: 821064.55' UTM, NAD 83 (ZONE 13) Y: 11760184.67' X: 2125798.94'	NAD 83 (AS-DRILLED LTP) LATITUDE = 32°24'20.82" (32.405783°) LONGITUDE = 103°25'28.60" (103.424611°) STATE PLANE NAD 83 (N.M. EAST) Y: 512547.24' X: 821788.08' UTM, NAD 83 (ZONE 13) Y: 11766731.29' X: 2126481.56'
NAD 83 (AS-DRILLED FTP) LATITUDE = 32°23'14.18" (32.387273°) LONGITUDE = 103°25'29.51" (103.424864°) STATE PLANE NAD 83 (N.M. EAST) Y: 505812.33' X: 821767.21' UTM, NAD 83 (ZONE 13) Y: 11759997.25' X: 2126502.69'	NAD 83 (AS-DRILLED BHL) LATITUDE = 32°24'21.35" (32.405932°) LONGITUDE = 103°25'28.59" (103.424609°) STATE PLANE NAD 83 (N.M. EAST) Y: 512601.24' X: 821788.04' UTM, NAD 83 (ZONE 13) Y: 11766785.28' X: 2126481.19'

17 OPERATOR
CERTIFICATION

I hereby certify that the information contained herein is true and complete to the best of my knowledge and belief, and that this organization either owns a working interest or unleased mineral interest in the land including the proposed bottom hole location or has a right to drill this well at this location pursuant to a contract with an owner of such a mineral or working interest, or to a voluntary pooling agreement or a compulsory pooling order heretofore entered by the division.

K. Schlichting 1/20/2020
Signature Date

Kanicia Schlichting
Printed Name

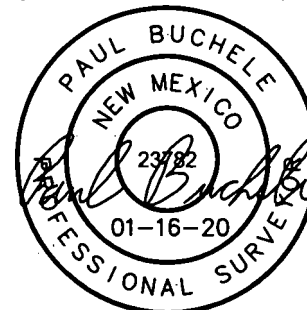
kanicia.schlichting@cdevinc.com
E-mail Address

18 SURVEYOR
CERTIFICATION

I hereby certify that the well location shown on this plat was plotted from field notes of actual surveys made by me or under my supervision, and that the same is true and correct to the best of my belief.

January 15, 2020

Date of Survey
Signature and Seal of Professional Surveyor:



Certificate Number:

Intent ☐ As Drilled ☒

API #
30-025-46400

Operator Name: Centennial Resource Production, LLC	Property Name: Queso Blanco 13 State Com	Well Number 603H
---	---	---------------------

Kick Off Point (KOP)

UL N	Section 13	Township 22S	Range 34E	Lot N	Feet 1225	From N/S South	Feet 1562	From E/W West	County Lea
Latitude 32.387817					Longitude -103.427134			NAD 83	

First Take Point (FTP)

UL N	Section 13	Township 22S	Range 34E	Lot N	Feet 1028	From N/S South	Feet 2264	From E/W West	County Lea
Latitude 32.387273					Longitude -103.424864			NAD 83	

Last Take Point (LTP)

UL K	Section 12	Township 22S	Range 34E	Lot K	Feet 2534	From N/S South	Feet 2326	From E/W West	County Lea
Latitude 32.405932					Longitude -103.424609			NAD 83	

Is this well the defining well for the Horizontal Spacing Unit? ☐ No

Is this well an infill well? ☐ Yes

If infill is yes please provide API if available, Operator Name and well number for Defining well for Horizontal Spacing Unit.

API #
30-025-46399

Operator Name: Centennial Resource Production, LLC	Property Name: Queso Blanco 13 State Com	Well Number 602H
---	---	---------------------

KZ 06/29/2018

