

District I
1625 N. French Dr., Hobbs, NM 88240
Phone: (575) 393-6161 Fax: (575) 393-0720
District II
811 S. First St., Artesia, NM 88210
Phone: (575) 748-1283 Fax: (575) 748-0720
District III
1000 Rio Brazos Road, Aztec, NM 87410
Phone: (505) 334-6178 Fax: (505) 334-6170
District IV
1220 S. St. Francis Dr., Santa Fe, NM 87505
Phone: (505) 476-3460 Fax: (505) 476-3462

State of New Mexico
Energy, Minerals & Natural Resources
Department
OIL CONSERVATION DIVISION
1220 South St. Francis Dr.
Santa Fe, NM 87505

FORM C-102
Revised August 1, 2011
Submit one copy to appropriate
District Office

☐ AMENDED REPORT

RECEIVED
FEB 19 2020
HOBBS OGD

WELL LOCATION AND ACREAGE DEDICATION PLAT

¹ API Number 30-025-44753		² Pool Code 98097	³ Pool Name SANDERS TANK; UPPER WOLFCAMP
⁴ Property Code 321383	⁵ Property Name PEACHTREE 24 FED COM		⁶ Well Number #709H
⁷ GRID No. 7377	⁸ Operator Name EOG RESOURCES, INC.		⁹ Elevation 3345'

¹⁰Surface Location

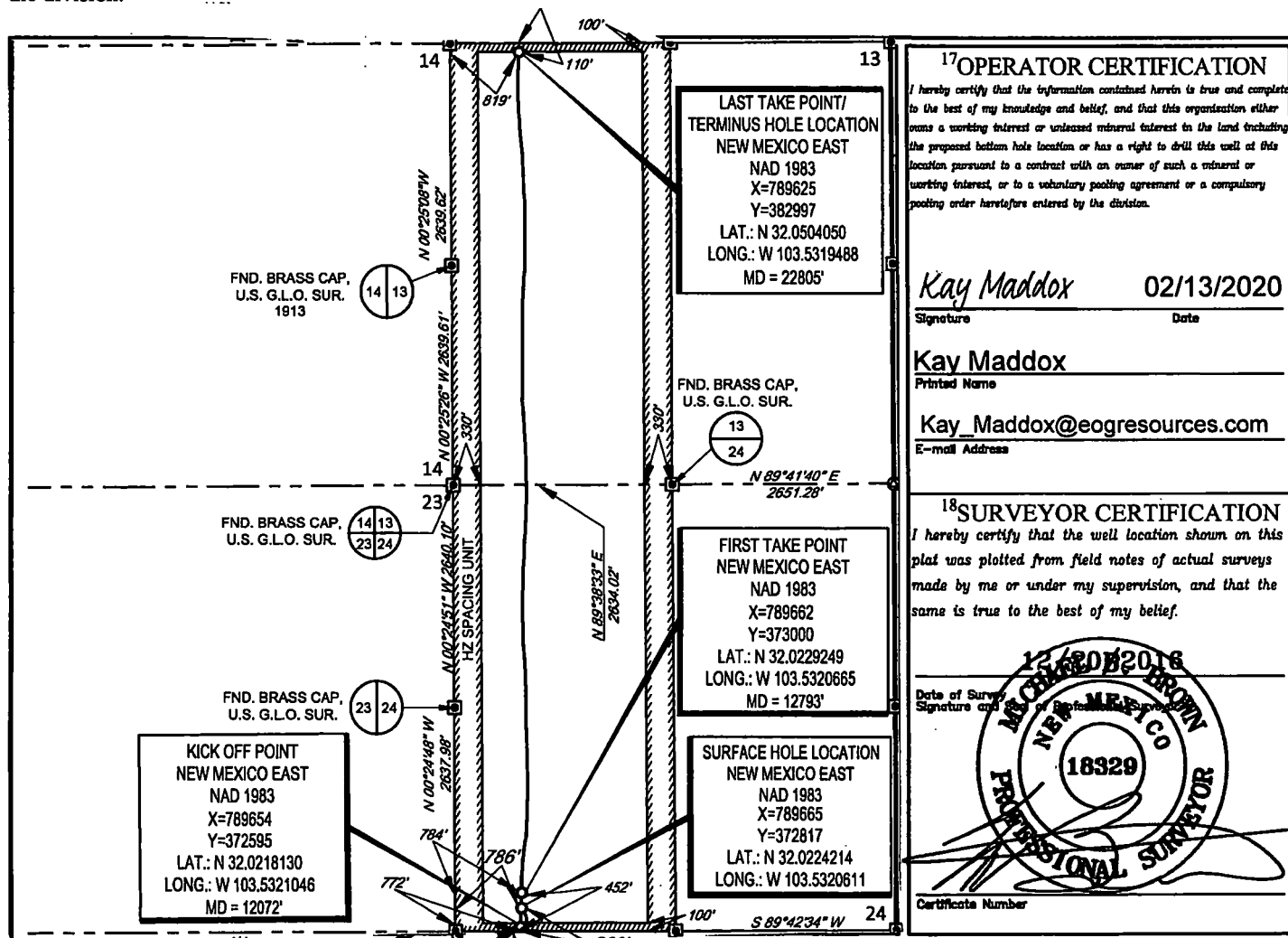
UL or lot no. M	Section 24	Township 26-S	Range 33-E	Lot Idn -	Feet from the 268'	North/South line SOUTH	Feet from the 786'	East/West line WEST	County LEA
--------------------	---------------	------------------	---------------	--------------	-----------------------	---------------------------	-----------------------	------------------------	---------------

¹¹Bottom Hole Location If Different From Surface

UL or lot no. D	Section 13	Township 26-S	Range 33-E	Lot Idn -	Feet from the 110'	North/South line NORTH	Feet from the 819'	East/West line WEST	County LEA
--------------------	---------------	------------------	---------------	--------------	-----------------------	---------------------------	-----------------------	------------------------	---------------

¹² Dedicated Acres 640.00	¹³ Joint or Infill	¹⁴ Consolidation Code	¹⁵ Order No.
---	-------------------------------	----------------------------------	-------------------------

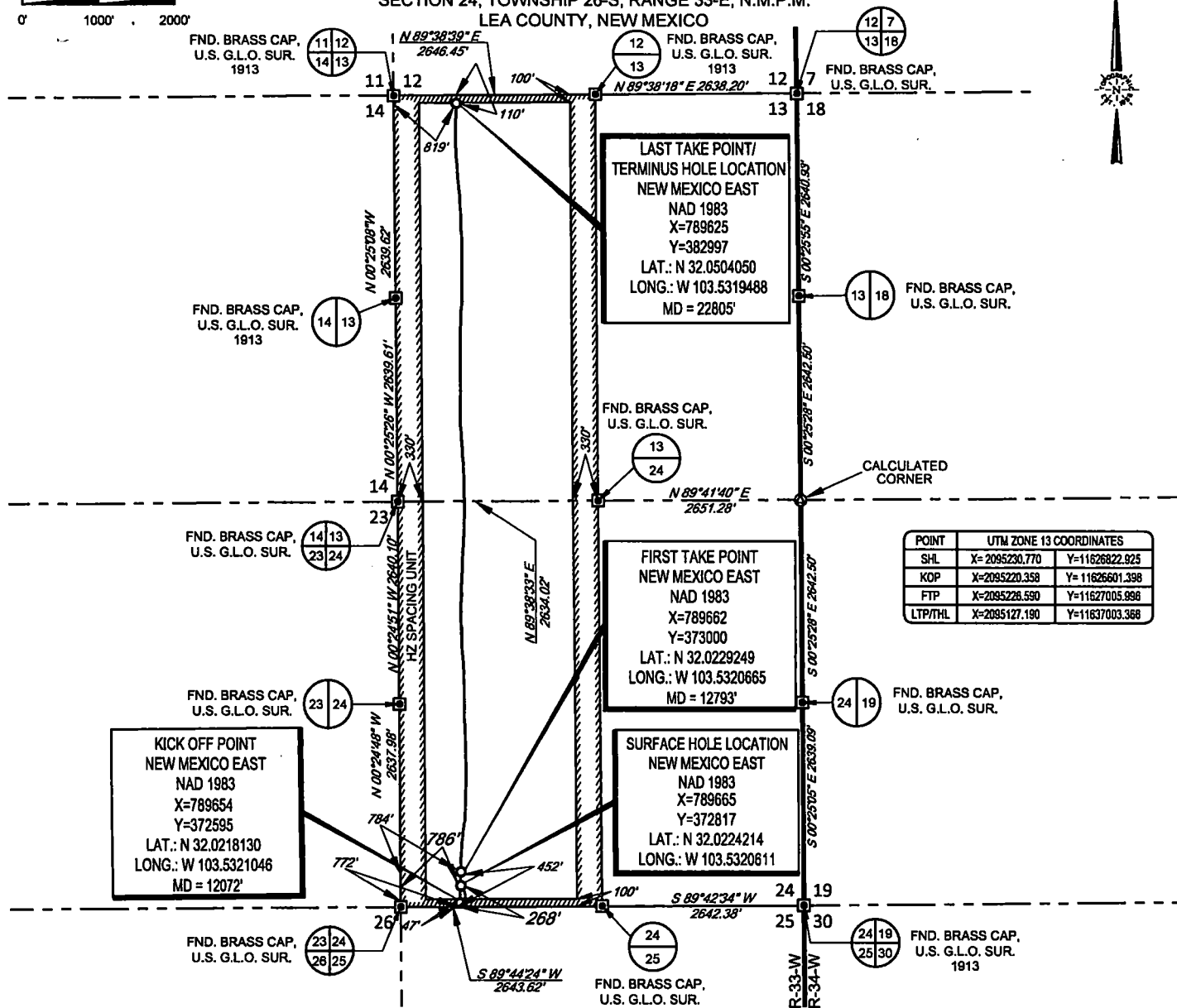
No allowable will be assigned to this completion until all interests have been consolidated or a non-standard unit has been approved by the division.



SCALE: 1" = 2000'

0' 1000' 2000'

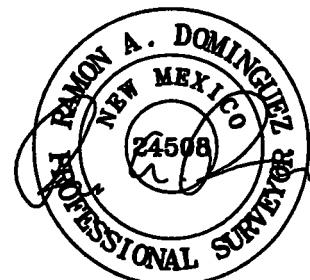
SECTION 24, TOWNSHIP 26-S, RANGE 33-E, N.M.P.M.
LEA COUNTY, NEW MEXICO



LEASE NAME & WELL NO.: PEACHTREE 24 FED COM #709H
SECTION 24 TWP 26-S RGE 33-E SURVEY N.M.P.M.
COUNTY LEA STATE NM ELEVATION 3344'
DESCRIPTION 268' FSL & 786' FWL

TOPOGRAPHIC
LOYALTY INNOVATION LEGACY

1400 EVERMAN PARKWAY, Ste. 146 • FT. WORTH, TEXAS 76140
TELEPHONE: (817) 744-7512 • FAX (817) 744-7554
2903 NORTH BIG SPRING • MIDLAND, TEXAS 79705
TELEPHONE: (432) 682-1653 OR (800) 767-1653 • FAX (432) 682-1743
WWW.TOPOGRAPHIC.COM



Ramon A. Dominguez, P.S. No. 24508
JANUARY 02, 2020

Geog resources, Inc.

PEACHTREE 24 FED COM #709H AS-COMplete	REVISION:		NOTES:
DATE: 1/02/2020			1. ORIGINAL DOCUMENT SIZE: 8.5" X 11" 2. ALL BEARINGS, DISTANCES, AND COORDINATE VALUES CONTAINED HEREIN ARE GRID BASED UPON THE NEW MEXICO COORDINATE SYSTEM OF 1983, EAST ZONE, U.S. SURVEY FEET. 3. THIS WELL LOCATION SHOWN HEREON HAS BEEN SURVEYED ON THE GROUND UNDER MY SUPERVISION AND PREPARED ACCORDING TO THE EVIDENCE FOUND AT THE TIME OF SURVEY, AND DATA PROVIDED BY EOG RESOURCES, INC. THIS CERTIFICATION IS MADE AND LIMITED TO THOSE PERSONS OR ENTITIES SHOWN ON THE FACE OF THIS PLAT AND IS NON-TRANSFERABLE. THIS SURVEY IS CERTIFIED FOR THIS TRANSACTION ONLY.
FILE: AD_PEACHTREE_24_FED_COM_709H			
DRAWN BY: JLS			
SHEET: 1 OF 1			

Intent ☐ As Drilled ☒ XXX

API #
30-025-44753

Operator Name:
EOG RESOURCES, INC

Property Name:
PEACHTREE 24 FEDERAL COM

Well Number
709H

Kick Off Point (KOP)

UL	Section	Township	Range	Lot	Feet	From N/S	Feet	From E/W	County
M	24	26S	33E		47	SOUTH	772	WEST	LEA
Latitude					Longitude				NAD
32.0218130					103.5321046				1983

First Take Point (FTP)

UL	Section	Township	Range	Lot	Feet	From N/S	Feet	From E/W	County
M	24	26S	33E		452	SOUTH	784	WEST	LEA
Latitude					Longitude				NAD
32.0229240					103.5320665				1983

Last Take Point (LTP)

UL	Section	Township	Range	Lot	Feet	From N/S	Feet	From E/W	County
D	13	26S	33E		110	NORTH	819	WEST	LEA
Latitude					Longitude				NAD
32.0504050					103.5319488				1983

Is this well the defining well for the Horizontal Spacing Unit? ☒ NO

Is this well an infill well? ☐ YES

If infill is yes please provide API if available, Operator Name and well number for Defining well for Horizontal Spacing Unit.

API #
30-025-44755

Operator Name:
EOG RESOURCES, INC

Property Name:
PEACHTREE 24 FEDERAL COM

Well Number
708H

KZ 06/29/2018