

District I
1625 N. French Dr., Hobbs, NM 88240
Phone: (575) 393-6161 Fax: (575) 393-0720
District II
811 S. First St., Artesia, NM 88210
Phone: (575) 748-1283 Fax: (575) 748-9720
District III
1000 Rio Brazos Road, Aztec, NM 87410
Phone: (505) 334-6178 Fax: (505) 334-6170
District IV
1220 S. St. Francis Dr., Santa Fe, NM 87505
Phone: (505) 476-3460 Fax: (505) 476-3462

HOF
FEB 17 2020
RECEIVED

State of New Mexico
Energy, Minerals & Natural Resources
Department
OIL CONSERVATION DIVISION
1220 South St. Francis Dr.
Santa Fe, NM 87505

FORM C-102
Revised August 1, 2011
Submit one copy to appropriate
District Office

☐ AMENDED REPORT

WELL LOCATION AND ACREAGE DEDICATION PLAT

¹ API Number 30-025-44755	² Pool Code 98097	³ Pool Name SANDERS TANK; UPPER WOLFCAMP
⁴ Property Code 321383	⁵ Property Name PEACHTREE 24 FED COM	⁶ Well Number #708H
⁷ OGRID No. 7377	⁸ Operator Name EOG RESOURCES, INC.	⁹ Elevation 3346'

¹⁰Surface Location

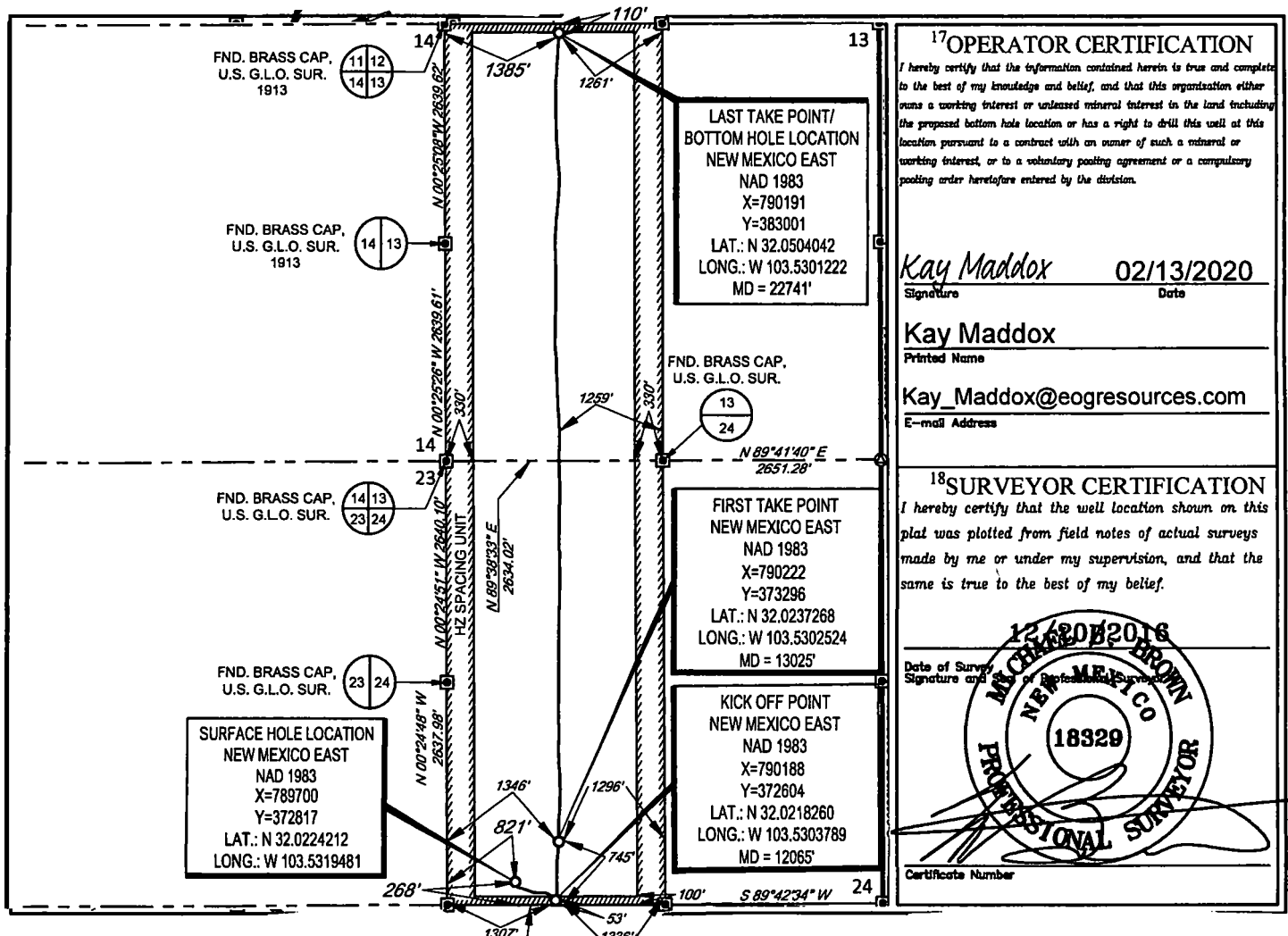
UL or lot no.	Section	Township	Range	Lot Idn	Feet from the	North/South line	Feet from the	East/West line	County
M	24	26-S	33-E	-	268'	SOUTH	821'	WEST	LEA

¹¹Bottom Hole Location If Different From Surface

UL or lot no.	Section	Township	Range	Lot Idn	Feet from the	North/South line	Feet from the	East/West line	County
C	13	26-S	33-E	-	110'	NORTH	1385'	WEST	LEA

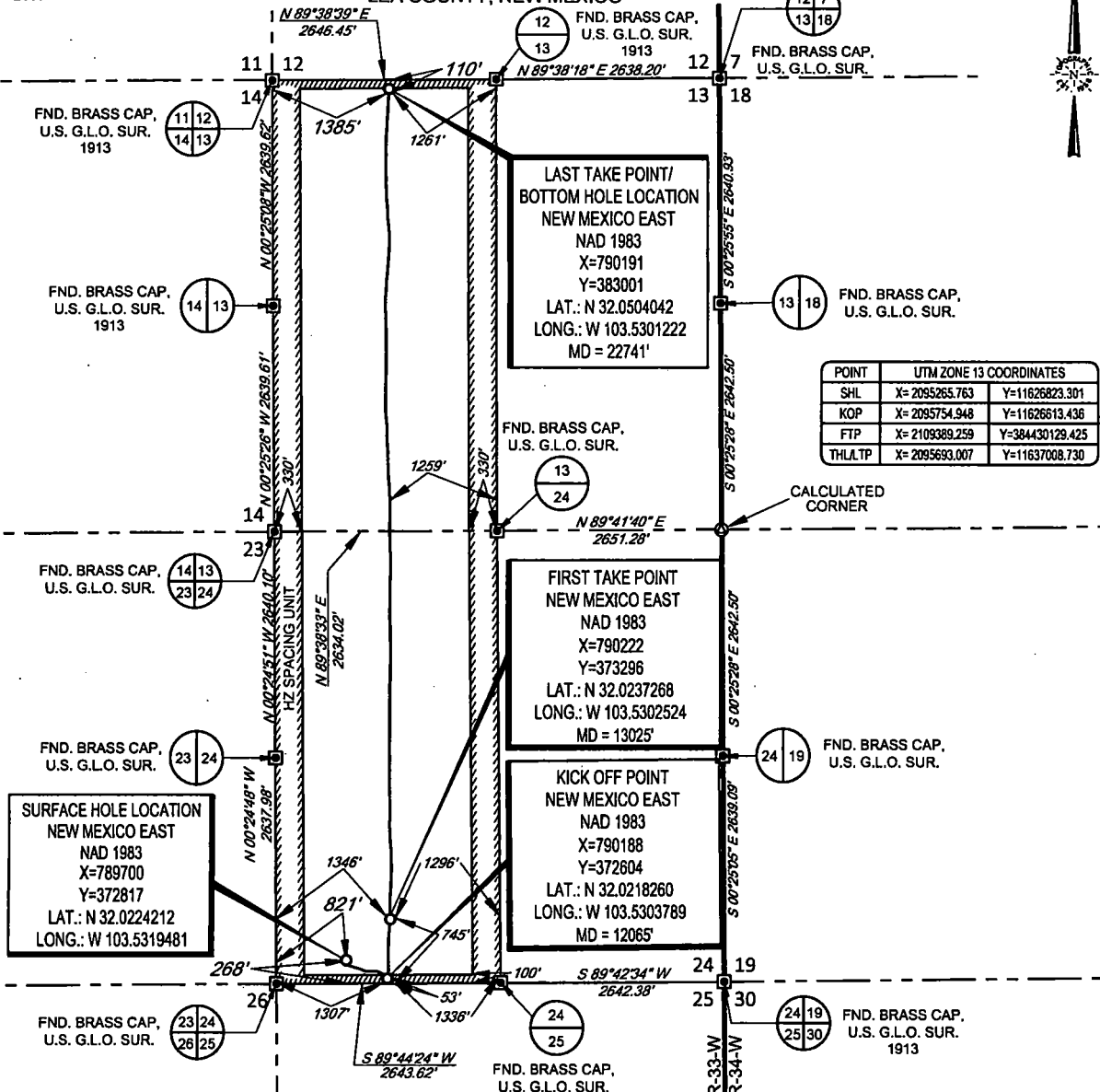
¹² Dedicated Acres 640.00	¹³ Joint or Infill	¹⁴ Consolidation Code	¹⁵ Order No.
--	-------------------------------	----------------------------------	-------------------------

No allowable will be assigned to this completion until all interests have been consolidated or a non-standard unit has been approved by the division.



SCALE: 1" = 2000'
0' 1000' 2000'

SECTION 24, TOWNSHIP 26-S, RANGE 33-E, N.M.P.M.
LEA COUNTY, NEW MEXICO

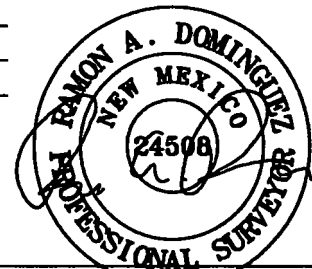


LEASE NAME & WELL NO.: PEACHTREE 24 FED COM #708H
SECTION 24 TWP 26-S RGE 33-E SURVEY N.M.P.M.
COUNTY LEA STATE NM ELEVATION 3344'
DESCRIPTION 268' FSL & 821' FWL



TOPOGRAPHIC
LOYALTY INNOVATION LEGACY

1400 EVERMAN PARKWAY, Ste. 148 • FT. WORTH, TEXAS 76140
TELEPHONE: (817) 744-7512 • FAX (817) 744-7554
2803 NORTH BIG SPRING • MIDLAND, TEXAS 79705
TELEPHONE: (432) 682-1653 OR (800) 787-1653 • FAX (432) 682-1743
WWW.TOPOGRAPHIC.COM



Ramon A. Dominguez, P.S. No. 24508
JANUARY 02, 2020

Geog resources, Inc.

PEACHTREE 24 FED COM
#708H
AS-COMplete

REVISION:

NOTES:

1. ORIGINAL DOCUMENT SIZE: 8.5" X 11"
2. ALL BEARINGS, DISTANCES, AND COORDINATE VALUES CONTAINED HEREIN ARE GRID BASED UPON THE NEW MEXICO COORDINATE SYSTEM OF 1983, EAST ZONE, U.S. SURVEY FEET.
3. THIS WELL LOCATION SHOWN HEREON HAS BEEN SURVEYED ON THE GROUND UNDER MY SUPERVISION AND PREPARED ACCORDING TO THE EVIDENCE FOUND AT THE TIME OF SURVEY, AND DATA PROVIDED BY EOG RESOURCES, INC. THIS CERTIFICATION IS MADE AND LIMITED TO THOSE PERSONS OR ENTITIES SHOWN ON THE FACE OF THIS PLAT AND IS NON-TRANSFERABLE. THIS SURVEY IS CERTIFIED FOR THIS TRANSACTION ONLY.

DATE: 1/02/2020

FILE: AD_PEACHTREE_24_FED_COM_708H

DRAWN BY: JLS

SHEET: 1 OF 1

Intent ☐ As Drilled ☒ XXX

API #
30-025-44755

Operator Name: EOG RESOURCES, INC	Property Name: PEACHTREE 24 FEDERAL COM	Well Number 708H
--------------------------------------	--	---------------------

Kick Off Point (KOP)

UL M	Section 24	Township 26S	Range 33E	Lot	Feet 53	From N/S SOUTH	Feet 1307	From E/W WEST	County LEA
Latitude 32.0218260					Longitude 103.5303789				NAD 1983

First Take Point (FTP)

UL N	Section 24	Township 26S	Range 33E	Lot	Feet 745	From N/S SOUTH	Feet 1346	From E/W WEST	County LEA
Latitude 32.0237268					Longitude 103.5302524				NAD 1983

Last Take Point (LTP)

UL C	Section 13	Township 26S	Range 33E	Lot	Feet 110	From N/S NORTH	Feet 1385	From E/W WEST	County LEA
Latitude 32.0504042					Longitude 103.5301222				NAD 1983

Is this well the defining well for the Horizontal Spacing Unit?

☒ YES

Is this well an infill well?

☐ NO

If infill is yes please provide API if available, Operator Name and well number for Defining well for Horizontal Spacing Unit.

API #

Operator Name: EOG RESOURCES, INC	Property Name:	Well Number
--------------------------------------	----------------	-------------

KZ 06/29/2018