

District I
1625 N. French Dr., Hobbs, NM 88240
Phone: (575) 393-6161 Fax: (575) 393-0720
District II
811 S. First St., Artesia, NM 88210
Phone: (575) 748-1283 Fax: (575) 748-9720
District III
1000 Rio Brazos Road, Aztec, NM 87410
Phone: (505) 334-6178 Fax: (505) 334-6170
District IV
1220 S. St. Francis Dr., Santa Fe, NM 87505
Phone: (505) 476-3460 Fax: (505) 476-3462

State of New Mexico
Energy, Minerals & Natural Resources
Department
OIL CONSERVATION DIVISION
1220 South St. Francis Dr.
Santa Fe, NM 87505

HOBBS OCD

FEB 20 2020

RECEIVED

FORM C-102
Revised August 1, 2011
Submit one copy to appropriate
District Office

AMENDED REPORT

WELL LOCATION AND ACREAGE DEDICATION PLAT

¹ API Number 30-025-46514	² Pool Code 96434	³ Pool Name RED HILLS;BONE SPRING, NORTH
⁴ Property Code 322998	⁵ Property Name BRAD LUMMIS COM	
⁷ OGRID No. 228937	⁸ Operator Name MATADOR PRODUCTION COMPANY	
		⁶ Well Number 122H
		⁹ Elevation 3476'

¹⁰Surface Location

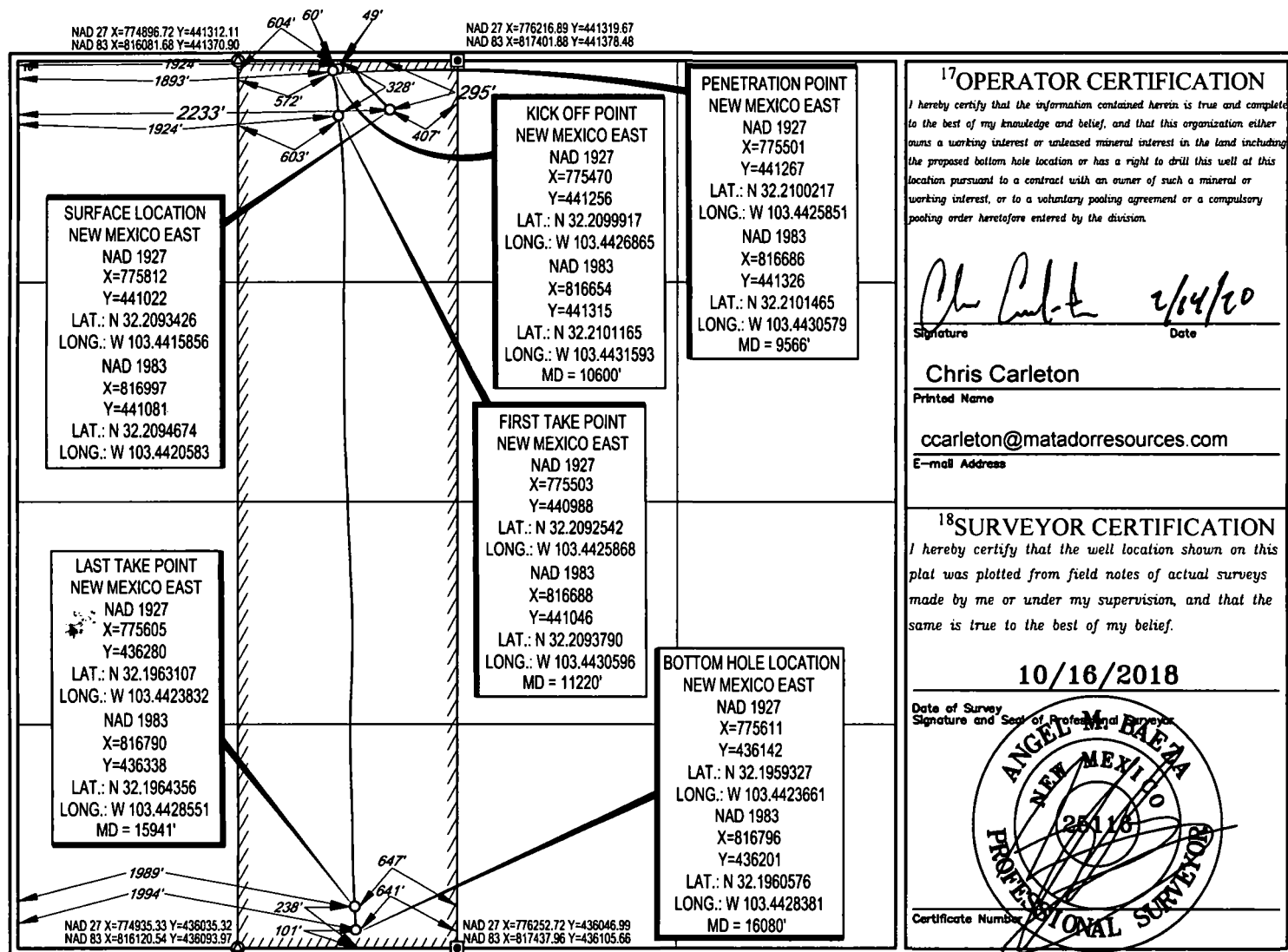
UL or lot no.	Section	Township	Range	Lot Idn	Feet from the	North/South line	Feet from the	East/West line	County
C	23	24-S	34-E	-	295'	NORTH	2233'	WEST	LEA

¹¹Bottom Hole Location If Different From Surface

UL or lot no.	Section	Township	Range	Lot Idn	Feet from the	North/South line	Feet from the	East/West line	County
N	23	24-S	34-E	-	101'	SOUTH	1994'	WEST	LEA

¹² Dedicated Acres 160	¹³ Joint or Infill	¹⁴ Consolidation Code	¹⁵ Order No.
---	-------------------------------	----------------------------------	-------------------------

No allowable will be assigned to this completion until all interests have been consolidated or a non-standard unit has been approved by the division.



HOBBS OCDIntent ☐ As Drilled ☒

FEB 20 2020

API #
30-025-46514**RECEIVED**

Operator Name: MATADOR PRODUCTION COMPANY	Property Name: BRAD LUMMIS COM	Well Number 122H
--	-----------------------------------	---------------------

Kick Off Point (KOP)

UL C	Section 23	Township 24S	Range 34E	Lot	Feet 60	From N/S N	Feet 1893	From E/W W	County LEA
Latitude N 32.2101165					Longitude W 103.4431593			NAD 83	

First Take Point (FTP)

UL C	Section 23	Township 24S	Range 34E	Lot	Feet 328	From N/S N	Feet 1924	From E/W W	County LEA
Latitude N 32.2093790					Longitude W 103.4430596			NAD 83	

Last Take Point (LTP)

UL N	Section 23	Township 24S	Range 34E	Lot	Feet 238	From N/S S	Feet 1989	From E/W W	County LEA
Latitude N 32.1964356					Longitude W 103.4428551			NAD 83	

Is this well the defining well for the Horizontal Spacing Unit?

☐ N

Is this well an infill well?

☐ Y

If infill is yes please provide API if available, Operator Name and well number for Defining well for Horizontal Spacing Unit.

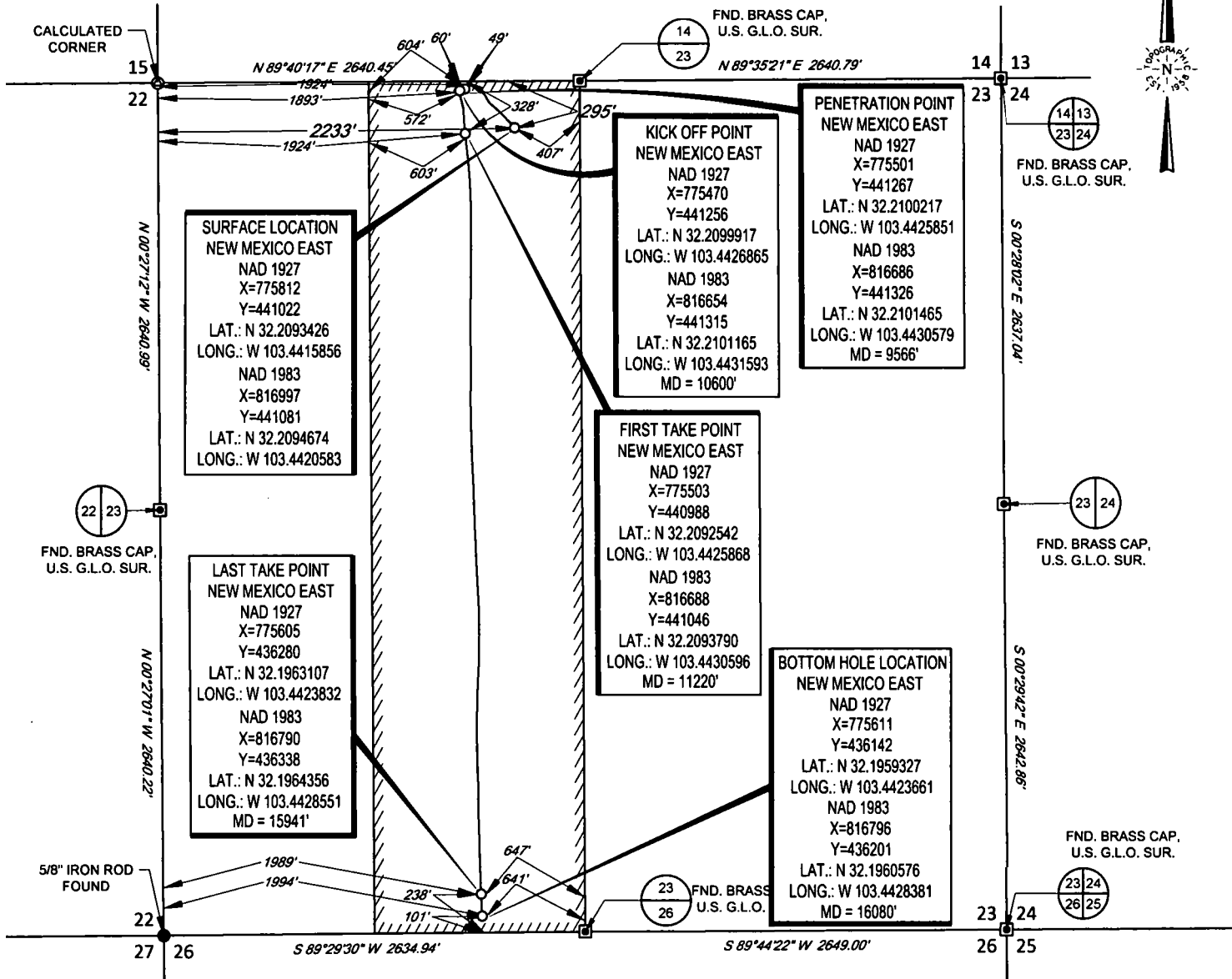
API #
30-025-45440

Operator Name: MATADOR PRODUCTION COMPANY	Property Name: BRAD LUMMIS COM	Well Number 112H
--	-----------------------------------	---------------------

KZ 06/29/2018

SCALE: 1" = 1000'
0' 500' 1000'

SECTION 23, TOWNSHIP 24-S, RANGE 34-E, N.M.P.M.
LEA COUNTY, NEW MEXICO



LEASE NAME & WELL NO.: BRAD LUMMIS COM 122H
SECTION 23 TWP 24-S RGE 34-E SURVEY N.M.P.M.
COUNTY LEA STATE NM ELEVATION 3476'
DESCRIPTION 295' FNL & 2233' FWL



TOPOGRAPHIC
LOYALTY INNOVATION LEGACY

1400 EVERMAN PARKWAY, Ste. 146 • FT. WORTH, TEXAS 76140
TELEPHONE: (817) 744-7512 • FAX (817) 744-7554
2803 NORTH BIG SPRING • MIDLAND, TEXAS 79705
TELEPHONE: (432) 682-1653 OR (800) 767-1653 • FAX (432) 682-1743
WWW.TOPOGRAPHIC.COM



Angel M. Baeza, P.S. No. 25116
February 2, 2020

BRAD LUMMIS COM 122H AS-COMPLETED	REVISION:		NOTES:
	INT	DATE	
DATE: 02/06/2020			<p>1. ORIGINAL DOCUMENT SIZE: 8.5" X 11"</p> <p>2. ALL BEARINGS, DISTANCES, AND COORDINATE VALUES CONTAINED HEREIN ARE GRID BASED UPON THE NEW MEXICO COORDINATE SYSTEM OF 1983, EAST ZONE, U.S. SURVEY FEET.</p> <p>3. CERTIFICATION IS MADE ONLY TO THE LOCATION OF THIS EASEMENT, IN RELATION TO THE EVIDENCE FOUND DURING A FIELD SURVEY, MADE ON THE GROUND, UNDER MY SUPERVISION, AND USING DOCUMENTATION PROVIDED BY MATADOR PRODUCTION COMPANY. ONLY UTILITIES/EASEMENTS THAT WERE VISIBLE ON THE DATE OF THIS SURVEY, WITHIN/ADJOINING THIS EASEMENT, HAVE BEEN LOCATED AS SHOWN HEREON OF WHICH I HAVE KNOWLEDGE. THIS CERTIFICATION IS LIMITED TO THOSE PERSONS OR ENTITIES SHOWN ON THE FACE OF THIS PLAT AND IS NON-TRANSFERABLE, AND MADE FOR THIS TRANSACTION ONLY.</p>
FILE: AD_BRAD_LUMMIS_COM_122H			
DRAWN BY: JDR			
SHEET: 1 OF 1			