

DISTRICT I  
1680 N. FRANCHIS DR., HOBBS, NM 88240  
Phone: (505) 382-4181 Fax: (505) 382-0785

DISTRICT II  
811 S. FIRST ST., ARTESIA, NM 88210  
Phone: (505) 746-1253 Fax: (505) 746-0780

DISTRICT III  
1000 RIO BRAZOS RD., ARTEC, NM 87410  
Phone: (505) 834-6176 Fax: (505) 834-6170

DISTRICT IV  
1220 S. ST. FRANCIS DR., SANTA FE, NM 87505  
Phone: (505) 476-3456 Fax: (505) 476-3456

State of New Mexico  
Energy, Minerals & Natural Resources Department  
**OIL CONSERVATION DIVISION**  
1220 SOUTH ST. FRANCIS DR.  
Santa Fe, New Mexico 87505

HOBBS OCD

RECEIVED  
FEB 03 2020

Form C-102  
Revised August 1, 2011  
Submit a copy to appropriate  
District Office

AMENDED REPORT

WELL LOCATION AND ACREAGE DEDICATION PLAT

API Number <b>30-025-45736</b>	Pool Code <b>98117</b>	Pool Name <b>WC-025 G-09 S263504N;WOLFCAMP</b>
Property Code	Property Name <b>ARENA ROJA FED UNIT 15-10</b>	Well Number <b>4H</b>
GRID No. <b>6137</b>	Operator Name <b>DEVON ENERGY PRODUCTION COMPANY, L.P.</b>	Elevation <b>3085.8'</b>

Surface Location

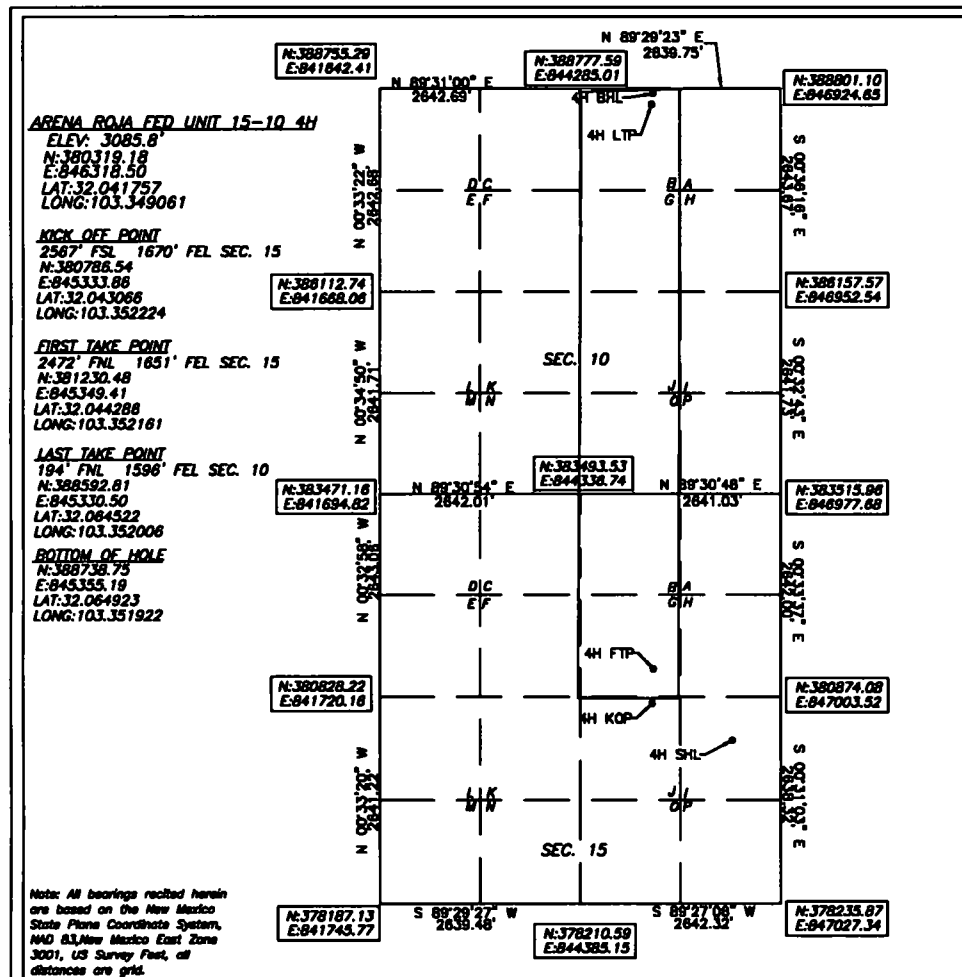
UL or lot No.	Section	Township	Range	Lot Idn	Feet from the	North/South line	Feet from the	East/West line	County
I	15	26-S	35-E		2090	SOUTH	690	EAST	LEA

Bottom Hole Location If Different From Surface

UL or lot No.	Section	Township	Range	Lot Idn	Feet from the	North/South line	Feet from the	East/West line	County
B	10	26-S	35-E		48	NORTH	1570	EAST	LEA

Dedicated Acres <b>240</b>	Joint or Infill	Consolidation Code	Order No.
-------------------------------	-----------------	--------------------	-----------

NO ALLOWABLE WILL BE ASSIGNED TO THIS COMPLETION UNTIL ALL INTERESTS HAVE BEEN CONSOLIDATED  
OR A NON-STANDARD UNIT HAS BEEN APPROVED BY THE DIVISION



OPERATOR CERTIFICATION

I hereby certify that the information herein is true and complete to the best of my knowledge and belief, and that this organization either owns a working interest or unleased mineral interest in the land including the proposed bottom hole location or has a right to drill this well at this location pursuant to a contract with an owner of such mineral or working interest, or to a voluntary pooling agreement or a compulsory pooling order heretofore entered by the division.

Signature Rebecca Deal Date 1/19/2020  
Signature Date  
Printed Name  
rebecca.deal@dvn.com  
E-mail Address

SURVEYOR CERTIFICATION

I hereby certify that the well location shown on this plat was plotted from field notes of actual surveys made by me or under my supervision, and that the same is true and correct to the best of my belief.

8/2018

Date of Survey

Signature & Seal of Professional Surveyor

**B. L. LAMAN**  
NEW MEXICO  
22404  
PROFESSIONAL SURVEYOR

1/29/20  
Certificate No. 22404 B.L. LAMAN  
W.O. # DRAWN BY: CM