

District I
1625 N. French Dr., Hobbs, NM 88240
Phone: (575) 393-6161 Fax: (575) 393-0720
District II
811 S. First St., Artesia, NM 88210
Phone: (575) 748-1283 Fax: (575) 748-9720
District III
1000 Rio Brazos Road, Aztec, NM 87410
Phone: (505) 334-6178 Fax: (505) 334-6170
District IV
1220 S. St. Francis Dr., Santa Fe, NM 87505
Phone: (505) 476-3460 Fax: (505) 476-3462

State of New Mexico
Energy, Minerals & Natural Resources
Department
OIL CONSERVATION DIVISION
1220 South St. Francis Dr.
Santa Fe, NM 87505

HOBBS OCD

FORM C-102

Revised August 1, 2011

Submit one copy to appropriate

District Office

FEB 27 2020

RECEIVED

AMENDED REPORT

WELL LOCATION AND ACREAGE DEDICATION PLAT

¹ API Number 30-025-46138	² Pool Code 96994	³ Pool Name PITCHFORK RANCH; WOLFCAMP, SOUTH
⁴ Property Code 325178	⁵ Property Name WILD WEASEL 22 FED COM	⁶ Well Number #711H
⁷ OGRID No. 7377	⁸ Operator Name EOG RESOURCES, INC.	⁹ Elevation 3345'

¹⁰Surface Location

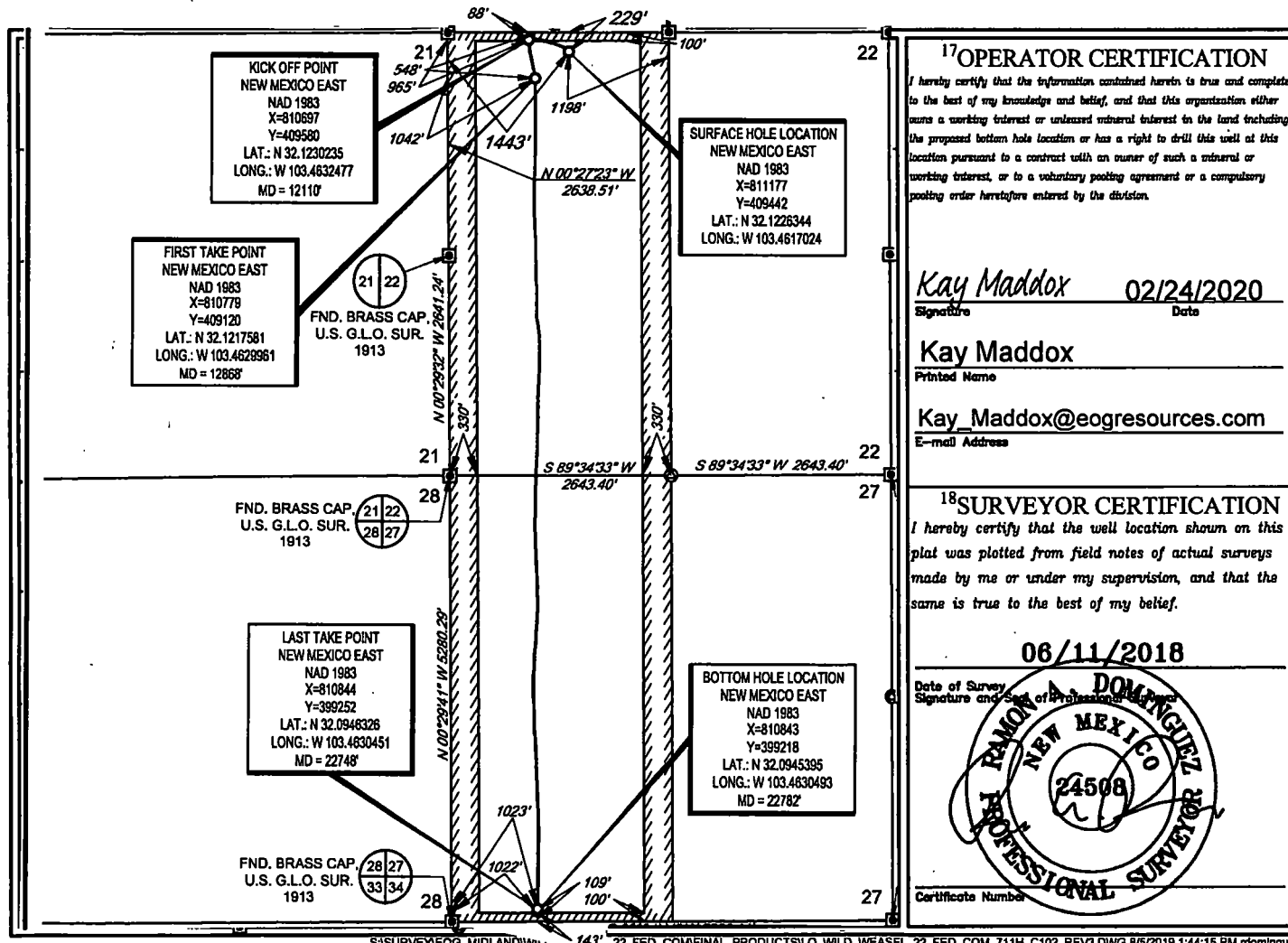
UL or lot no. C	Section 22	Township 25-S	Range 34-E	Lot Idn -	Feet from the 229'	North/South line NORTH	Feet from the 1443'	East/West line WEST	County LEA
---------------------------	----------------------	-------------------------	----------------------	---------------------	------------------------------	----------------------------------	-------------------------------	-------------------------------	----------------------

¹¹Bottom Hole Location If Different From Surface

UL or lot no. M	Section 27	Township 25-S	Range 34-E	Lot Idn -	Feet from the 109'	North/South line SOUTH	Feet from the 1022'	East/West line WEST	County LEA
---------------------------	----------------------	-------------------------	----------------------	---------------------	------------------------------	----------------------------------	-------------------------------	-------------------------------	----------------------

¹² Dedicated Acres 640.00	¹³ Joint or Infill	¹⁴ Consolidation Code	¹⁵ Order No.
--	-------------------------------	----------------------------------	-------------------------

No allowable will be assigned to this completion until all interests have been consolidated or a non-standard unit has been approved by the division.



¹⁷OPERATOR CERTIFICATION

I hereby certify that the information contained herein is true and complete to the best of my knowledge and belief, and that this organization either owns a working interest or undivided mineral interest in the land including the proposed bottom hole location or has a right to drill this well at this location pursuant to a contract with an owner of such a mineral or working interest, or to a voluntary pooling agreement or a compulsory pooling order heretofore entered by the division.

Kay Maddox 02/24/2020
Signature Date

Kay Maddox
Printed Name

Kay_Maddox@eogresources.com
E-mail Address

¹⁸SURVEYOR CERTIFICATION

I hereby certify that the well location shown on this plat was plotted from field notes of actual surveys made by me or under my supervision, and that the same is true to the best of my belief.

06/11/2018

Date of Survey
Signature and Seal of Professional Surveyor

Ramon A. Dominguez
NEW MEXICO
24508
PROFESSIONAL SURVEYOR
Certificate Number

SCALE: 1" = 2000'

0' 1000' 2000'

SECTION 22, TOWNSHIP 25-S, RANGE 34-E, N.M.P.M.
LEA COUNTY, NEW MEXICO

FND. BRASS CAP,
U.S. G.L.O. SUR.

KICK OFF POINT
NEW MEXICO EAST
NAD 1983
X=810697
Y=409580
LAT.: N 32.1230235
LONG.: W 103.4832477
MD = 12110'

FIRST TAKE POINT
NEW MEXICO EAST
NAD 1983
X=810779
Y=409120
LAT.: N 32.1217581
LONG.: W 103.4629961
MD = 12868'

FND. BRASS CAP,
U.S. G.L.O. SUR.
1913

LAST TAKE POINT
NEW MEXICO EAST
NAD 1983
X=810844
Y=399252
LAT.: N 32.0946328
LONG.: W 103.4630451
MD = 22748'

FND. BRASS CAP,
U.S. G.L.O. SUR.
1913

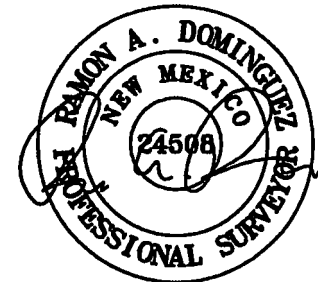
SURFACE HOLE LOCATION
NEW MEXICO EAST
NAD 1983
X=811177
Y=409442
LAT.: N 32.1226344
LONG.: W 103.4617024

BOTTOM HOLE LOCATION
NEW MEXICO EAST
NAD 1983
X=810843
Y=399218
LAT.: N 32.0945395
LONG.: W 103.4630493
MD = 22782'

FND. BRASS CAP,
U.S. G.L.O. SUR.
1913

FND. BRASS CAP,
U.S. G.L.O. SUR.
1913

POINT	UTM ZONE 13 COORDINATES	
SHL	X=2116512.623	Y=11663575.459
KOP	X=2116032.293	Y=11663710.180
FTP	X=2116116.726	Y=11663251.035
LTP	X=2116242.277	Y=11663384.735
BHL	X=2118241.437	Y=11663350.874



Ramon A. Dominguez, P.S. No. 24508
FEBRUARY 12, 2020

LEASE NAME & WELL NO.: WILD WEASEL 22 FED COM 711H
SECTION 22 TWP 25-S RGE 34-E SURVEY N.M.P.M.
COUNTY LEA STATE NM ELEVATION 3344'
DESCRIPTION 229' FNL & 1443' FWL



TOPOGRAPHIC
LOYALTY INNOVATION LEGACY

1400 EVERMAN PARKWAY, Ste. 148 • FT. WORTH, TEXAS 76140
TELEPHONE: (817) 744-7512 • FAX (817) 744-7554
2903 NORTH BIG SPRING • MIDLAND, TEXAS 79705
TELEPHONE: (432) 682-1653 OR (800) 787-1853 • FAX (432) 682-1743
WWW.TOPOGRAPHIC.COM

eoog resources, inc.

WILD WEASEL 22 FED COM 711H AS-COMplete		REVISION:	NOTES: 1. ORIGINAL DOCUMENT SIZE: 8.5" X 11" 2. ALL BEARINGS, DISTANCES, AND COORDINATE VALUES CONTAINED HEREIN ARE GRID BASED UPON THE NEW MEXICO COORDINATE SYSTEM OF 1983, EAST ZONE, U.S. SURVEY FEET. 3. THIS WELL LOCATION SHOWN HEREON HAS BEEN SURVEYED ON THE GROUND UNDER MY SUPERVISION AND PREPARED ACCORDING TO THE EVIDENCE FOUND AT THE TIME OF SURVEY, AND DATA PROVIDED BY EOG RESOURCES, INC. THIS CERTIFICATION IS MADE AND LIMITED TO THOSE PERSONS OR ENTITIES SHOWN ON THE FACE OF THIS PLAT AND IS NON-TRANSFERABLE. THIS SURVEY IS CERTIFIED FOR THIS TRANSACTION ONLY.
DATE:	02/12/2020		
FILE:	AD_WILD_WEASEL_22_FED_COM_711H		
DRAWN BY:	TRG		
SHEET:	1 OF 1		

Intent ☐ As Drilled ☒ XXX

API #
30-025-46138

Operator Name: EOG RESOURCES, INC	Property Name: WILD WEASEL 22 FEDERAL COM	Well Number 711H
--------------------------------------	--	---------------------

Kick Off Point (KOP)

UL D	Section 22	Township 25S	Range 34E	Lot	Feet 88	From N/S NORTH	Feet 965	From E/W WEST	County LEA
Latitude 32.1230235					Longitude 103.4632477			NAD 1983	

First Take Point (FTP)

UL D	Section 22	Township 25S	Range 34E	Lot	Feet 548	From N/S NORTH	Feet 1042	From E/W WEST	County LEA
Latitude 32.1217581					Longitude 103.4629961			NAD 1983	

Last Take Point (LTP)

UL M	Section 27	Township 25S	Range 34E	Lot	Feet 143	From N/S SOUTH	Feet 1023	From E/W WEST	County LEA
Latitude 32.0946326					Longitude 103.4630451			NAD 1983	

Is this well the defining well for the Horizontal Spacing Unit? ☐ NO

Is this well an infill well? ☒ YES

If infill is yes please provide API if available, Operator Name and well number for Defining well for Horizontal Spacing Unit.

API #
30-025-45805

Operator Name: EOG RESOURCES, INC	Property Name: WILD WEASEL 22 FEDERAL COM	Well Number 712H
--------------------------------------	--	---------------------

KZ 06/29/2018

