

DISTRICT I  
1825 N. FRENCH DR., HOBBS, NM 88240  
Phone: (575) 393-6161 Fax: (575) 393-0720

DISTRICT II  
611 S. FIRST ST., ARTESIA, NM 88210  
Phone: (575) 748-1283 Fax: (575) 748-9720

DISTRICT III  
1000 RIO BRAZOS RD., AZTEC, NM 87410  
Phone: (505) 334-6178 Fax: (505) 334-6170

DISTRICT IV  
1220 S. ST. FRANCIS DR., SANTA FE, NM 87505  
Phone: (505) 476-3480 Fax: (505) 476-3482

State of New Mexico  
Energy, Minerals & Natural Resources Department  
**OIL CONSERVATION DIVISION**  
1220 SOUTH ST. FRANCIS  
Santa Fe, New Mexico 87505

Form C-102  
Revised August 1, 2011  
Submit one copy to appropriate  
District Office

☒ AMENDED REPORT  
As Drilled

WELL LOCATION AND ACREAGE DEDICATION PLAT

API Number 30-025-46379	Pool Code 98309	Pool Name WC-025 G-08 S243213C; WOLFCAMP
Property Code 326116	Property Name EIDER 23 FEDERAL	Well Number 602H
OGRID No. 217955	Operator Name COG PRODUCTION, LLC	Elevation 3567.3'

Surface Location

UL or lot No. B	Section 23	Township 24-S	Range 32-E	Lot Idn	Feet from the 435	North/South line NORTH	Feet from the 1995	East/West line EAST	County LEA
--------------------	---------------	------------------	---------------	---------	----------------------	---------------------------	-----------------------	------------------------	---------------

Bottom Hole Location If Different From Surface

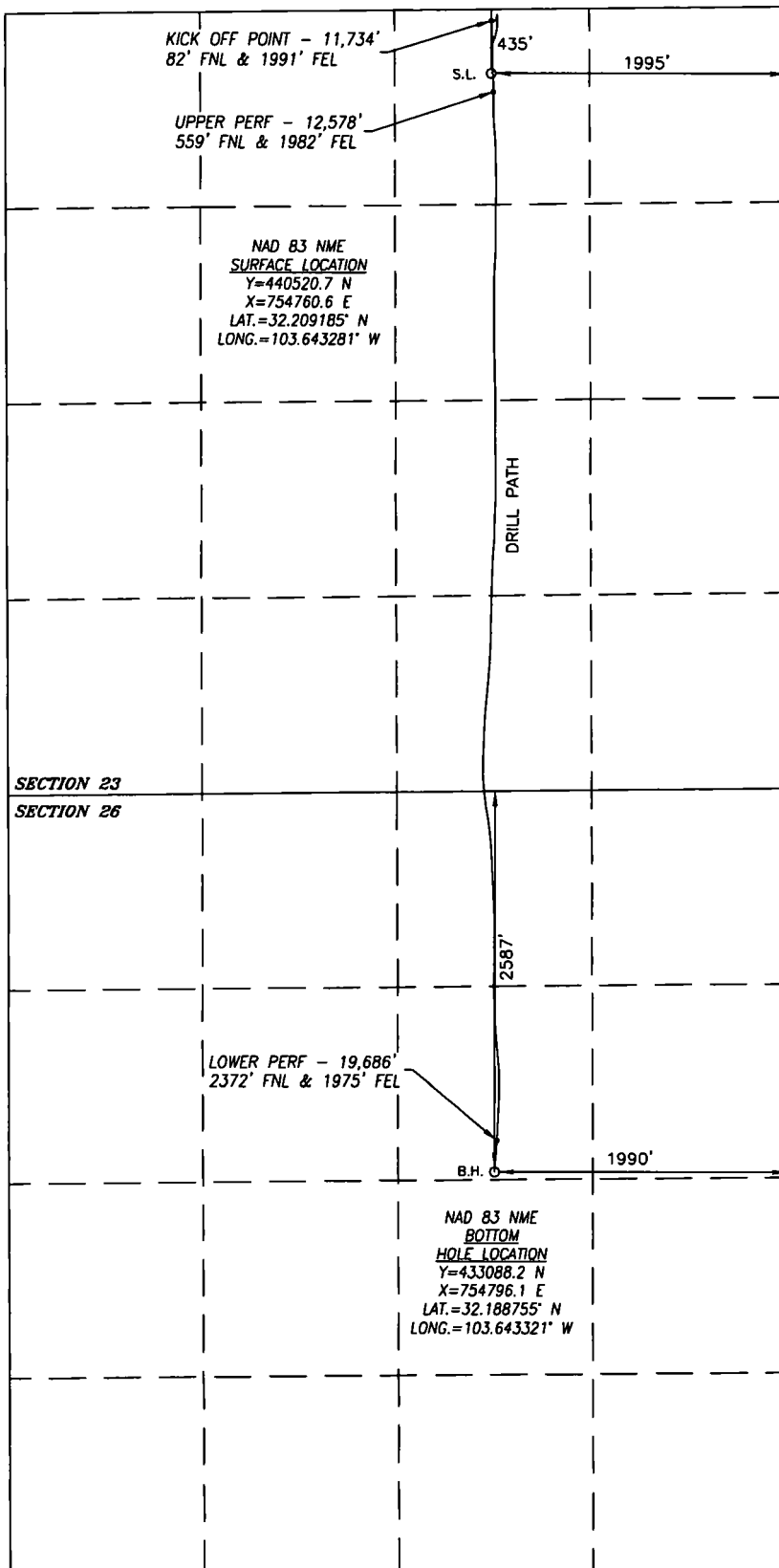
UL or lot No. G	Section 26	Township 24-S	Range 32-E	Lot Idn	Feet from the 2587	North/South line NORTH	Feet from the 1990	East/West line EAST	County LEA
--------------------	---------------	------------------	---------------	---------	-----------------------	---------------------------	-----------------------	------------------------	---------------

Dedicated Acres 240	Joint or Infill	Consolidation Code	Order No.
------------------------	-----------------	--------------------	-----------

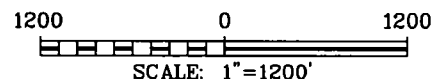
NO ALLOWABLE WILL BE ASSIGNED TO THIS COMPLETION UNTIL ALL INTERESTS HAVE BEEN CONSOLIDATED  
OR A NON-STANDARD UNIT HAS BEEN APPROVED BY THE DIVISION

SEE PAGE 2

Property Code 326116	Property Name EIDER 23 FEDERAL	Well Number 602H
OGRID No. 217955	Operator Name COG PRODUCTION, LLC	Elevation 3567.3'



SURFACE INFO AND BOREPATH SHOWN HEREON IS BASED ON DIRECTIONAL SURVEY REPORT PROVIDED BY COG PRODUCTION, LLC FOR THE EIDER 23 FEDERAL #602H SUPPLIED TO HARCROW SURVEYING, LLC ON FEBRUARY 7, 2020



#### OPERATOR CERTIFICATION

I hereby certify that the information herein is true and complete to the best of my knowledge and belief, and that this organization either owns a working interest or unleased mineral interest in the land including the proposed bottom hole location or has a right to drill this well at this location pursuant to a contract with an owner of such mineral or working interest, or to a voluntary pooling agreement or a compulsory pooling order heretofore entered by the division.

*Amanda Avery* 2/24/20  
Signature Date

Amanda Avery

Printed Name

aavery@concho.com

E-mail Address

#### SURVEYOR CERTIFICATION

I hereby certify that the well location shown on this plat was plotted from field notes of actual surveys made by me or under my supervision, and that the same is true and correct to the best of my belief.

APRIL 4, 2019/DEC. 13, 2019

Date of Survey/Date of Geographic Survey

Signature & Seal of Professional Surveyor



*Chad Harcrow* 2/7/20  
Certificate No. CHAD HARCROW 17777

Intent ☐ As Drilled ☒

API #

Operator Name:  
COG PRODUCTION, LLC

Property Name:  
EIDER 23 FEDERAL

Well Number  
602H

Kick Off Point (KOP)

UL	Section	Township	Range	Lot	Feet	From N/S	Feet	From E/W	County
B	23	24S	32E		82	NORTH	1991	EAST	LEA
Latitude					Longitude				NAD
32.210157					-103.643276				83

First Take Point (FTP)

UL	Section	Township	Range	Lot	Feet	From N/S	Feet	From E/W	County
B	23	24S	32E		559	NORTH	1982	EAST	LEA
Latitude					Longitude				NAD
32.208844					-103.643236				83

Last Take Point (LTP)

UL	Section	Township	Range	Lot	Feet	From N/S	Feet	From E/W	County
G	26	24S	32E		2372	NORTH	1975	EAST	LEA
Latitude					Longitude				NAD
32.189345					-103.643272				83

Is this well the defining well for the Horizontal Spacing Unit?

☐ No

Is this well an infill well?

☐ Yes

If infill is yes please provide API if available, Operator Name and well number for Defining well for Horizontal Spacing Unit.

API #

30-025-46381

Operator Name:  
COG Production LLC

Property Name:  
Eider 23 Federal

Well Number  
702H

KZ 06/29/2018