

DISTRICT I
1625 N. FRENCH DR., HOBBS, NM 88240
Phone: (505) 393-8161 Fax: (505) 393-0720

DISTRICT II
811 S. FIRST ST., ARTESIA, NM 88210
Phone: (505) 748-1283 Fax: (505) 748-9720

DISTRICT III
1000 RIO BRAZOS RD., AZTEC, NM 87410
Phone: (505) 334-6178 Fax: (505) 334-6170

DISTRICT IV
1220 S. ST. FRANCIS DR., SANTA FE, NM 87505
Phone: (505) 478-3460 Fax: (505) 478-3462

State of New Mexico
Energy, Minerals & Natural Resources Department
OIL CONSERVATION DIVISION
1220 SOUTH ST. FRANCIS DR.
Santa Fe, New Mexico 87505

Form C-102
Revised August 1, 2011
Submit one copy to appropriate
District Office

☒ AMENDED REPORT
As Drilled

WELL LOCATION AND ACREAGE DEDICATION PLAT

API Number 30-025-46381	Pool Code 98309	Pool Name WC-025 G-08 S243213C; WOLFCAMP
Property Code 326116	Property Name EIDER 23 FEDERAL	Well Number 702H
OGRID No. 217955	Operator Name COG PRODUCTION, LLC	Elevation 3567.3'

Surface Location

UL or lot No. B	Section 23	Township 24-S	Range 32-E	Lot Idn	Feet from the 435	North/South line NORTH	Feet from the 1965	East/West line EAST	County LEA
--------------------	---------------	------------------	---------------	---------	----------------------	---------------------------	-----------------------	------------------------	---------------

Bottom Hole Location If Different From Surface

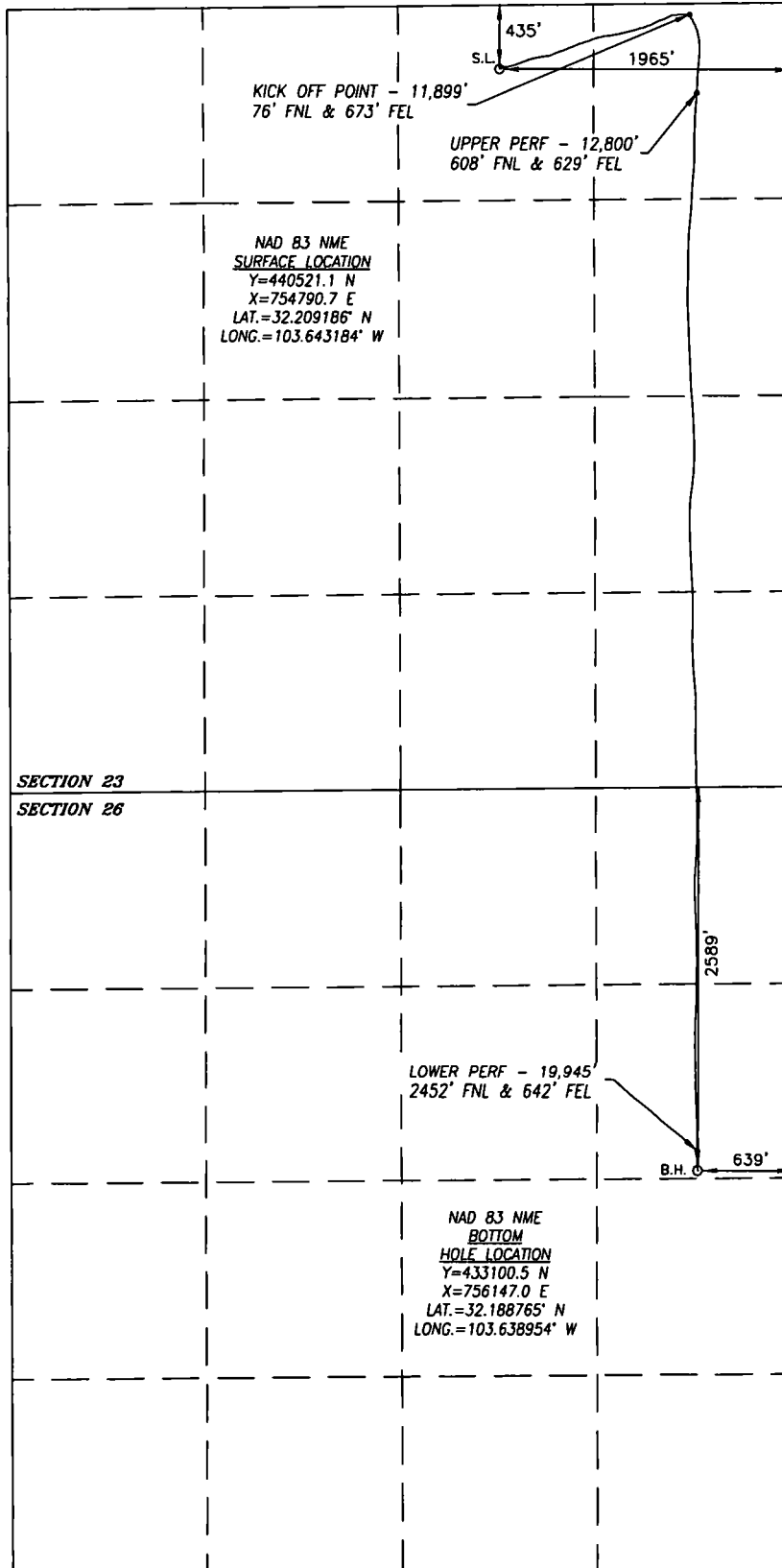
UL or lot No. H	Section 26	Township 24-S	Range 32-E	Lot Idn	Feet from the 2589	North/South line NORTH	Feet from the 639	East/West line EAST	County LEA
--------------------	---------------	------------------	---------------	---------	-----------------------	---------------------------	----------------------	------------------------	---------------

Dedicated Acres 240	Joint or Infill	Consolidation Code	Order No.
------------------------	-----------------	--------------------	-----------

NO ALLOWABLE WILL BE ASSIGNED TO THIS COMPLETION UNTIL ALL INTERESTS HAVE BEEN CONSOLIDATED
OR A NON-STANDARD UNIT HAS BEEN APPROVED BY THE DIVISION

SEE PAGE 2

Property Code 326116	Property Name EIDER 23 FEDERAL	Well Number 702H
OGRID No. 217995	Operator Name COG PRODUCTION, LLC	Elevation 3567.3'



SURFACE INFO AND BOREPATH SHOWN HEREON IS BASED ON DIRECTIONAL SURVEY REPORT PROVIDED BY COG PRODUCTION, LLC FOR THE EIDER 23 FEDERAL #702H SUPPLIED TO HARCROW SURVEYING, LLC ON FEBRUARY 7, 2020

1200 0 1200
SCALE: 1"=1200'

OPERATOR CERTIFICATION

I hereby certify that the information herein is true and complete to the best of my knowledge and belief, and that this organization either owns a working interest or unleased mineral interest in the land including the proposed bottom hole location or has a right to drill this well at this location pursuant to a contract with an owner of such mineral or working interest, or to a voluntary pooling agreement or a compulsory pooling order heretofore entered by the division.

Amanda Avery 2/24/20
Signature Date

Amanda Avery

Printed Name

aavery@concho.com

E-mail Address

SURVEYOR CERTIFICATION

I hereby certify that the well location shown on this plat was plotted from field notes of actual surveys made by me or under my supervision, and that the same is true and correct to the best of my belief.

APRIL 4, 2019/NOV. 20, 2019

Date of Survey/Date of Geographic Survey

Signature & Seal of Professional Surveyor



Chad Harcrow 2/7/20
Certificate No. CHAD HARCROW 17777

Intent ☐ As Drilled ☒

API #
30-025-46381

Operator Name:
COG PRODUCTION, LLC

Property Name:
EIDER 23 FEDERAL

Well Number
702H

Kick Off Point (KOP)

UL	Section	Township	Range	Lot	Feet	From N/S	Feet	From E/W	County
A	23	24S	32E		76	NORTH	673	EAST	LEA
Latitude					Longitude				NAD
32.210188					-103.639015				83

First Take Point (FTP)

UL	Section	Township	Range	Lot	Feet	From N/S	Feet	From E/W	County
A	23	24S	32E		608	NORTH	629	EAST	LEA
Latitude					Longitude				NAD
32.208728					-103.638863				83

Last Take Point (LTP)

UL	Section	Township	Range	Lot	Feet	From N/S	Feet	From E/W	County
H	26	24S	32E		2452	NORTH	642	EAST	LEA
Latitude					Longitude				NAD
32.189141					-103.638960				83

Is this well the defining well for the Horizontal Spacing Unit? ☒

Is this well an infill well? ☐

If infill is yes please provide API if available, Operator Name and well number for Defining well for Horizontal Spacing Unit.

API #

Operator Name:

Property Name:

Well Number

KZ 06/29/2018