

District I  
1625 N. French Dr., Hobbs, NM 88240  
Phone: (575) 393-6161 Fax: (575) 393-0720  
District II  
811 S. First St., Artesia, NM 88210  
Phone: (575) 748-1283 Fax: (575) 748-9720  
District III  
1000 Rio Brazos Road, Aztec, NM 87410  
Phone: (505) 334-6178 Fax: (505) 334-6170  
District IV  
1220 S. St. Francis Dr., Santa Fe, NM 87505  
Phone: (505) 476-3460 Fax: (505) 476-3462

State of New Mexico  
Energy, Minerals & Natural Resources  
Department  
OIL CONSERVATION DIVISION  
1220 South St. Francis Dr.  
Santa Fe, NM 87505

**HOBBS OCD**

**FEB 20 2020**

**RECEIVED**

FORM C-102

Revised August 1, 2011

Submit one copy to appropriate

District Office

☐ AMENDED REPORT

**WELL LOCATION AND ACREAGE DEDICATION PLAT**

<sup>1</sup> API Number <b>30-025-45440</b>		<sup>2</sup> Pool Code <b>96434</b>		<sup>3</sup> Pool Name <b>RED HILLS; BONE SPRING, NORTH</b>	
<sup>4</sup> Property Code <b>322998</b>		<sup>5</sup> Property Name <b>BRAD LUMMIS COM</b>			<sup>6</sup> Well Number <b>112H</b>
<sup>7</sup> GRID No. <b>228937</b>		<sup>8</sup> Operator Name <b>MATADOR PRODUCTION COMPANY</b>			<sup>9</sup> Elevation <b>3477'</b>

**<sup>10</sup>Surface Location**

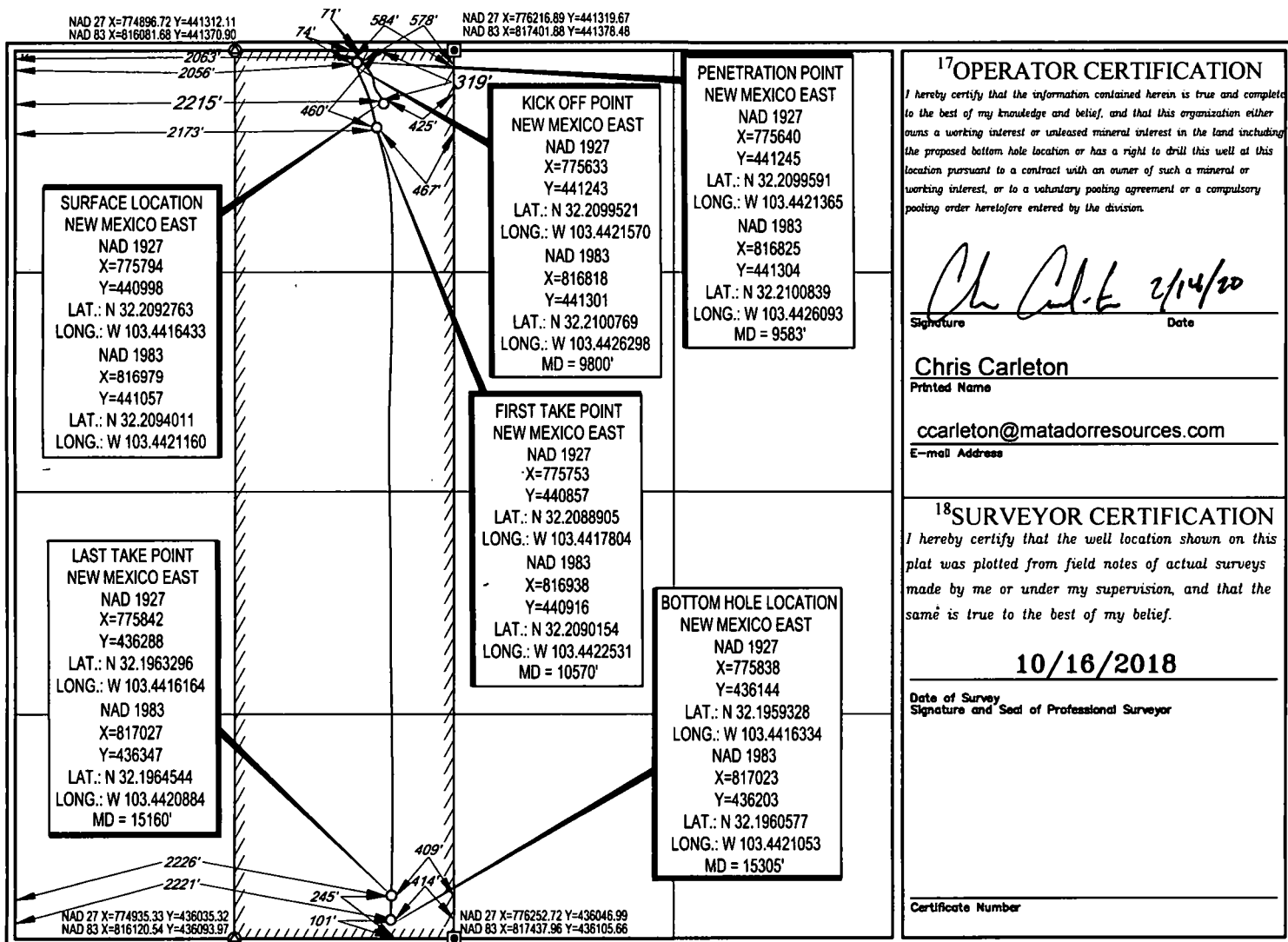
UL or lot no.	Section	Township	Range	Lot Idn	Feet from the	North/South line	Feet from the	East/West line	County
<b>C</b>	<b>23</b>	<b>24-S</b>	<b>34-E</b>	<b>-</b>	<b>319'</b>	<b>NORTH</b>	<b>2215'</b>	<b>WEST</b>	<b>LEA</b>

**<sup>11</sup>Bottom Hole Location If Different From Surface**

UL or lot no.	Section	Township	Range	Lot Idn	Feet from the	North/South line	Feet from the	East/West line	County
<b>N</b>	<b>23</b>	<b>24-S</b>	<b>34-E</b>	<b>-</b>	<b>101'</b>	<b>SOUTH</b>	<b>2221'</b>	<b>WEST</b>	<b>LEA</b>

<sup>12</sup> Dedicated Acres <b>160</b>	<sup>13</sup> Joint or Infill	<sup>14</sup> Consolidation Code	<sup>15</sup> Order No.
---	-------------------------------	----------------------------------	-------------------------

No allowable will be assigned to this completion until all interests have been consolidated or a non-standard unit has been approved by the division.



**<sup>17</sup>OPERATOR CERTIFICATION**

I hereby certify that the information contained herein is true and complete to the best of my knowledge and belief, and that this organization either owns a working interest or unleased mineral interest in the land including the proposed bottom hole location or has a right to drill this well at this location pursuant to a contract with an owner of such a mineral or working interest, or to a voluntary pooling agreement or a compulsory pooling order heretofore entered by the division.

*Chris Carleton* 2/14/20  
Signature Date

**Chris Carleton**

Printed Name

**ccarleton@matadorresources.com**

E-mail Address

**<sup>18</sup>SURVEYOR CERTIFICATION**

I hereby certify that the well location shown on this plat was plotted from field notes of actual surveys made by me or under my supervision, and that the same is true to the best of my belief.

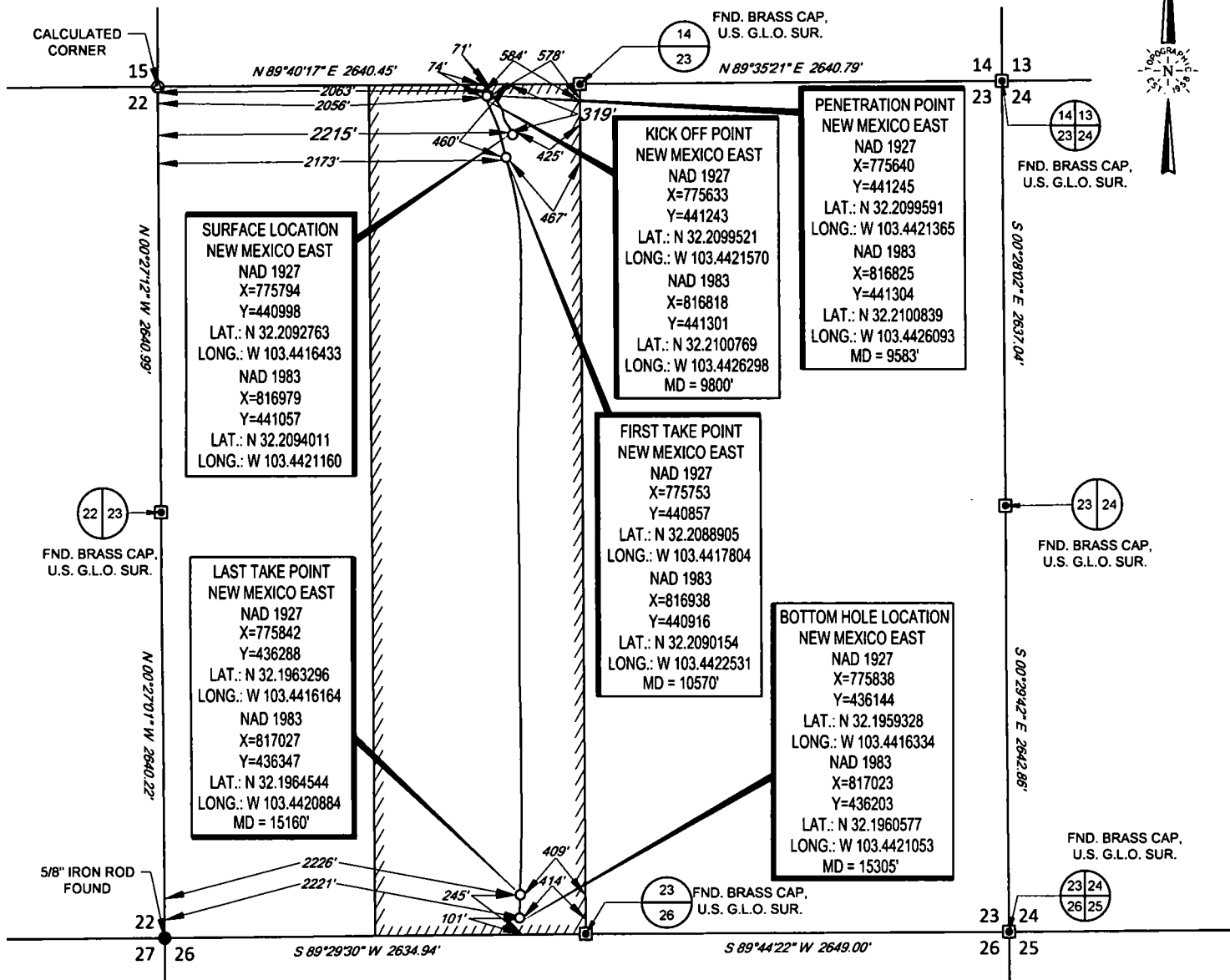
**10/16/2018**

Date of Survey  
Signature and Seal of Professional Surveyor

Certificate Number

SCALE: 1" = 1000'

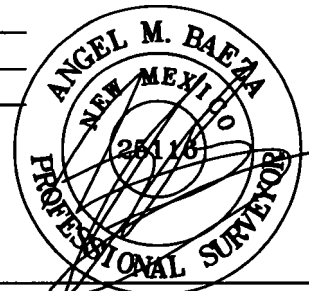
SECTION 23, TOWNSHIP 24-S, RANGE 34-E, N.M.P.M.  
LEA COUNTY, NEW MEXICO



LEASE-NAME & WELL NO.: BRAD LUMMIS COM 112H  
SECTION 23 TWP 24-S RGE 34-E SURVEY N.M.P.M.  
COUNTY LEA STATE NM ELEVATION 3477'  
DESCRIPTION 319' FNL & 2215' FWL



**TOPOGRAPHIC**  
LOYALTY INNOVATION LEGACY  
1400 EVERMAN PARKWAY, Ste. 146 • FT. WORTH, TEXAS 76140  
TELEPHONE: (817) 744-7512 • FAX (817) 744-7554  
2803 NORTH BIG SPRING • MIDLAND, TEXAS 79705  
TELEPHONE: (432) 682-1653 OR (800) 767-1653 • FAX (432) 682-1743  
WWW.TOPOGRAPHIC.COM



Angel M. Baeza, P.S. No. 25116  
February 2, 2020

BRAD LUMMIS COM 112H AS-COMPLETED	REVISION:		NOTES:
	INT	DATE	
DATE: 02/06/2020			<p>1. ORIGINAL DOCUMENT SIZE: 8.5" X 11"</p> <p>2. ALL BEARINGS, DISTANCES, AND COORDINATE VALUES CONTAINED HEREIN ARE GRID BASED UPON THE NEW MEXICO COORDINATE SYSTEM OF 1983, EAST ZONE, U.S. SURVEY FEET.</p> <p>3. CERTIFICATION IS MADE ONLY TO THE LOCATION OF THIS EASEMENT, IN RELATION TO THE EVIDENCE FOUND DURING A FIELD SURVEY, MADE ON THE GROUND, UNDER MY SUPERVISION, AND USING DOCUMENTATION PROVIDED BY MATADOR PRODUCTION COMPANY. ONLY UTILITIES/EASEMENTS THAT WERE VISIBLE ON THE DATE OF THIS SURVEY, WITHIN/ADJOINING THIS EASEMENT, HAVE BEEN LOCATED AS SHOWN HEREON OF WHICH I HAVE KNOWLEDGE. THIS CERTIFICATION IS LIMITED TO THOSE PERSONS OR ENTITIES SHOWN ON THE FACE OF THIS PLAT AND IS NON-TRANSFERABLE, AND MADE FOR THIS TRANSACTION ONLY.</p>
FILE:AD_BRAD_LUMMIS_COM_112H			
DRAWN BY: JDR			
SHEET: 1 OF 1			

Intent ☐ As Drilled ☒

**HOBBS OCD**

FEB 20 2020

**RECEIVED**

API # 30-025-45440		Operator Name: MATADOR PRODUCTION COMPANY		Property Name: BRAD LUMMIS COM		Well Number 112H
-----------------------	--	--	--	-----------------------------------	--	---------------------

**Kick Off Point (KOP)**

UL C	Section 23	Township 24S	Range 34E	Lot	Feet 74	From N/S N	Feet 2056	From E/W W	County LEA
Latitude N 32.2100769					Longitude W103.4426298			NAD 83	

**First Take Point (FTP)**

UL C	Section 23	Township 24S	Range 34E	Lot	Feet 460	From N/S N	Feet 2173	From E/W W	County LEA
Latitude N 32.2090154					Longitude W 103.4422531			NAD 83	

**Last Take Point (LTP)**

UL N	Section 23	Township 24S	Range 34E	Lot	Feet 245	From N/S S	Feet 2226	From E/W W	County LEA
Latitude N 32.1964544					Longitude W 103.4420884			NAD 83	

Is this well the defining well for the Horizontal Spacing Unit? ☐ Y

Is this well an infill well? ☐ N

If infill is yes please provide API if available, Operator Name and well number for Defining well for Horizontal Spacing Unit.

API #		Operator Name:		Property Name:		Well Number

KZ 06/29/2018