

District I
1625 N. French Dr., Hobbs, NM 88240
Phone: (575) 393-6161 Fax: (575) 393-0720
District II
811 S. First St., Artesia, NM 88210
Phone: (575) 748-1283 Fax: (575) 748-9720
District III
1000 Rio Brazos Road, Aztec, NM 87410
Phone: (505) 334-6178 Fax: (505) 334-6170
District IV
1220 S. St. Francis Dr., Santa Fe, NM 87505
Phone: (505) 476-3460 Fax: (505) 476-3462

State of New Mexico
Energy, Minerals & Natural Resources Department
OIL CONSERVATION DIVISION
1220 South St. Francis Dr.
Santa Fe, NM 87505

Form C-102
Revised August 1, 2011
Submit one copy to appropriate
District Office

☒ AMENDED REPORT
As Drilled

WELL LOCATION AND ACREAGE DEDICATION PLAT

1 API Number 30-025-45870		2 Pool Code 98065		3 Pool Name WLC-025 G-08 S263205N; Upper Wolfcamp	
4 Property Code 325470		5 Property Name PADUCA 7/6 W1GB FEDERAL COM			6 Well Number 2H
7 OGRID NO. 14744		8 Operator Name MEWBOURNE OIL COMPANY			9 Elevation 3250'

10 Surface Location

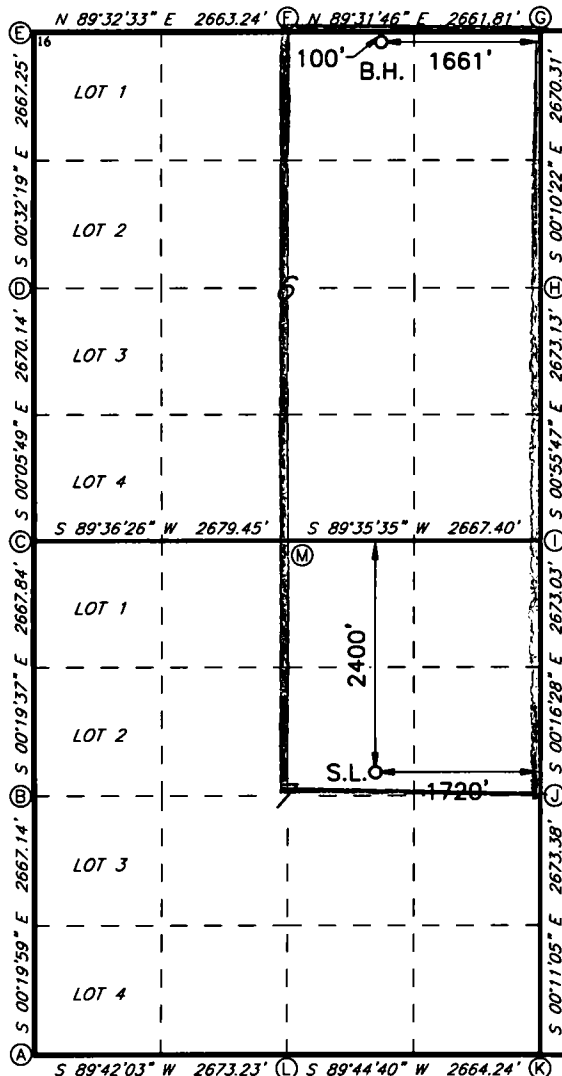
UL or lot no. G	Section 7	Township 26S	Range 32E	Lot Idn	Feet from the 2400	North/South line NORTH	Feet from the 1720	East/West line EAST	County LEA
--------------------	--------------	-----------------	--------------	---------	-----------------------	---------------------------	-----------------------	------------------------	---------------

11 Bottom Hole Location If Different From Surface

UL or lot no. B	Section 6	Township 26S	Range 32E	Lot Idn	Feet from the 42'	North/South line NORTH	Feet from the 1641'	East/West line EAST	County LEA
--------------------	--------------	-----------------	--------------	---------	----------------------	---------------------------	------------------------	------------------------	---------------

12 Dedicated Acres 480	13 Joint or Infill	14 Consolidation Code	15 Order No.
---------------------------	--------------------	-----------------------	--------------

No allowable will be assigned to this completion until all interest have been consolidated or a non-standard unit has been approved by the division.



GEODETIC DATA
NAD 83 GRID - NM EAST
SURFACE LOCATION
N 385498.7 - E 734017.8
LAT: 32.0582897° N
LONG: 103.7113716° W

BOTTOM HOLE
N 393138.8 - E 734014.2
LAT: 32.0792910° N
LONG: 103.7112410° W

CORNER DATA
NAD 83 GRID - NM EAST

A: FOUND BRASS CAP "1939"

N 382539.2 - E 730411.0

B: FOUND BRASS CAP "1939"

N 385205.8 - E 730395.5

C: FOUND BRASS CAP "1939"

N 387873.1 - E 730380.3

D: FOUND BRASS CAP "1939"

N 390542.7 - E 730375.8

E: FOUND BRASS CAP "1939"

N 393209.3 - E 730350.7

F: FOUND BRASS CAP "1939"

N 393230.6 - E 733013.3

G: FOUND BRASS CAP "1939"

N 393252.4 - E 735674.5

H: FOUND BRASS CAP "1939"

N 390582.6 - E 735682.6

I: FOUND BRASS CAP "1939"

N 387910.4 - E 735725.9

J: FOUND BRASS CAP "1939"

N 385237.9 - E 735738.7

K: FOUND BRASS CAP "1939"

N 382565.1 - E 735747.4

L: FOUND BRASS CAP "1939"

N 382553.2 - E 733083.7

M: FOUND BRASS CAP "1939"

N 387891.5 - E 733059.1

17 OPERATOR CERTIFICATION

I hereby certify that the information contained herein is true and complete to the best of my knowledge and belief, and that this organization either owns a working interest or unleased mineral interest in the land including the proposed bottom hole location or has a right to drill this well at this location pursuant to a contract with an owner of such a mineral or working interest, or to a voluntary pooling agreement or a compulsory pooling order heretofore entered by the division.

Signature: *[Signature]* Date: 1/27/2020
Printed Name: S. Lathan

E-mail Address

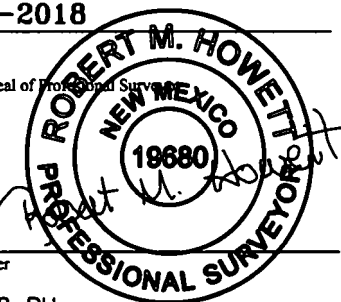
18 SURVEYOR CERTIFICATION

I hereby certify that the well location shown on this plat was plotted from field notes of actual surveys made by me or under my supervision, and that the same is true and correct to the best of my belief.

03-07-2018

Date of Survey

Signature and Seal of Professional Surveyor



19680

Certificate Number

7/30/2018 BH

Job No.: LS1803270D

Intent ☐ As Drilled ☒

API #
30-025-45870

Operator Name: Mewbourne Oil Company	Property Name: Paduca 7/6 W1GB Federal	Well Number #2H
---	---	--------------------

Kick Off Point (KOP)

UL 6	Section 7	Township 26S	Range 32E	Lot	Feet 2563	From N/S N	Feet 1634	From E/W E	County Lin
Latitude 32.0578384					Longitude -103.7110958			NAD 83	

First Take Point (FTP)

UL 6	Section 7	Township 26S	Range 32E	Lot	Feet 2215	From N/S N	Feet 1660	From E/W E	County Lin
Latitude 32.0588180					Longitude -103.7111737			NAD 83	

Last Take Point (LTP)

UL B	Section 6	Township 26S	Range 32E	Lot	Feet 122	From N/S N	Feet 1654	From E/W E	County Lin
Latitude 32.0792299					Longitude -103.7112189			NAD 83	

Is this well the defining well for the Horizontal Spacing Unit? ☒

Is this well an infill well? ☒

If infill is yes please provide API if available, Operator Name and well number for Defining well for Horizontal Spacing Unit.

API #
30-025-45861

Operator Name: Mewbourne Oil Co	Property Name: Paduca 7/6 W1GB Fed	Well Number #1H
------------------------------------	---------------------------------------	--------------------

KZ 06/29/2018