

BLM / FJP

DISTRICT I  
1625 N French Dr., Hobbs, NM 88240  
Phone (575) 393-6161 Fax (575) 393-0720  
DISTRICT II  
811 S First St., Artesia, NM 88210  
Phone (575) 748-1281 Fax (575) 748-9720  
DISTRICT III  
1000 Rio Grande Road, Artesia, NM 87410  
Phone (505) 334-6178 Fax (505) 334-6170  
DISTRICT IV  
1220 S. St. Francis Dr., Santa Fe, NM 87505  
Phone (505) 476-3460 Fax: (505) 476-3462

State of New Mexico  
Energy, Minerals & Natural Resources Department

Form C-102  
Revised August 1, 2011  
Submit one copy to appropriate  
District Office

**HOBBS OGD**  
**MAR 10 2020**  
**RECEIVED**

OIL CONSERVATION DIVISION  
1220 South St. Francis Dr.  
Santa Fe, New Mexico 87505

AMENDED REPORT

WELL LOCATION AND ACREAGE DEDICATION PLAT

API Number <b>30-024 46959</b>	Pool Code <b>97293</b>	Pool Name <b>OJO CHISO, Bone Spring, SOUTH</b>
Property Code <b>327902</b>	Property Name <b>NORTH RIDGE 8040 FEDERAL COM</b>	Well Number <b>3H</b>
OGRID No. <b>260297</b>	Operator Name <b>BTA OIL PRODUCERS, LLC</b>	Elevation <b>3407'</b>

Surface Location

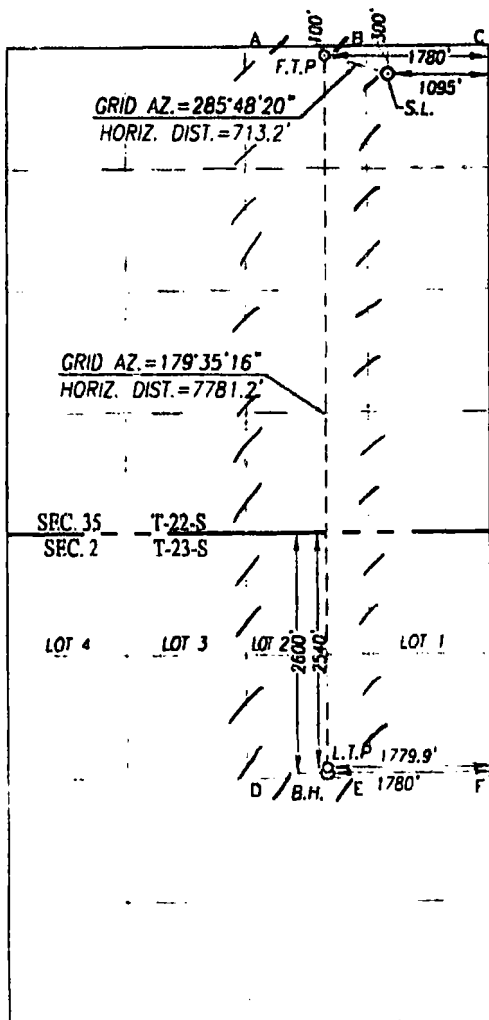
Ul. or lot No.	Section	Township	Range	Lot Idn	Feet from the	North/South line	Feet from the	East/West line	County
A	35	22-S	34-E		300	NORTH	1095	EAST	LEA

Bottom Hole Location If Different From Surface

Ul. or lot No	Section	Township	Range	Lot Idn	Feet from the	North/South line	Feet from the	East/West line	County
G	2	23-S	34-E		2600	NORTH	1780	EAST	LEA

Dedicated Acres <b>240.2</b>	Joint or Infill	Consolidation Code	Order No.
---------------------------------	-----------------	--------------------	-----------

NO ALLOWABLE WILL BE ASSIGNED TO THIS COMPLETION UNTIL ALL INTERESTS HAVE BEEN CONSOLIDATED OR A NON-STANDARD UNIT HAS BEEN APPROVED BY THE DIVISION



SCALE: 1"=2000'

GEODEIC COORDINATES		GEODEIC COORDINATES	
NAD 83 NME		NAD 27 NME	
SURFACE LOCATION		SURFACE LOCATION	
Y= 493896.4 N	X= 818481.7 E	Y= 493836.1 N	X= 777298.1 E
LAT.=32.354598° N	LONG.=103.435830° W	LAT.=32.354474° N	LONG.=103.435352° W
FIRST TAKE POINT		FIRST TAKE POINT	
NAD 83 NME		NAD 27 NME	
Y= 494090.6 N	X= 817795.6 E	Y= 494030.3 N	X= 776612.0 E
LAT.=32.355148° N	LONG.=103.438046° W	LAT.=32.355024° N	LONG.=103.437568° W
CORNER COORDINATES TABLE			
NAD 27 NME			
A - Y= 494123.1 N, X= 775747.3 E	B - Y= 494134.1 N, X= 777069.1 E	C - Y= 494145.1 N, X= 778391.0 E	D - Y= 486194.4 N, X= 775806.2 E
E - Y= 486203.5 N, X= 777127.4 E	F - Y= 486212.6 N, X= 778447.9 E		
CORNER COORDINATES TABLE			
NAD 83 NME			
A - Y= 494183.4 N, X= 816930.8 E	B - Y= 494194.4 N, X= 818252.7 E	C - Y= 494205.5 N, X= 819574.6 E	D - Y= 486254.4 N, X= 816989.8 E
E - Y= 486263.6 N, X= 818311.1 E	F - Y= 486272.7 N, X= 819631.6 E		
LAST TAKE POINT		LAST TAKE POINT	
NAD 83 NME		NAD 27 NME	
Y= 486370.9 N	X= 817851.1 E	Y= 486310.9 N	X= 776667.4 E
LAT.=32.333929° N	LONG.=103.438075° W	LAT.=32.333804° N	LONG.=103.437598° W
BOTTOM HOLE LOCATION		BOTTOM HOLE LOCATION	
NAD 83 NME		NAD 27 NME	
Y= 486310.9 N	X= 817851.5 E	Y= 486250.9 N	X= 776667.8 E
LAT.=32.333764° N	LONG.=103.438076° W	LAT.=32.333640° N	LONG.=103.437598° W

**OPERATOR CERTIFICATION**

I hereby certify that the information herein is true and complete to the best of my knowledge and belief, and that this organization either owns a working interest or an undivided mineral interest in the land including the proposed bottom hole location or has a right to drill this well at this location pursuant to a contract with an owner of such mineral or working interest, or to a voluntary pooling agreement or a compulsory pooling under heretofore entered by the division

Signature: *Sammy Hajar* Date: **5/6/19**

Printed Name: **Sammy Hajar**

E-mail Address: **SHAJAR@BTAOIL.COM**

**SURVEYOR CERTIFICATION**

I hereby certify that the well location shown on this plat was plotted from field notes of actual surveys made by me or under my supervision, and that the same is true and correct to the best of my belief.

JANUARY 25, 2019

Date of Survey

Signature: *Ronald J. Edson* Professional Surveyor

Certificate Number: *4103/19*

ACK REL. W.O. 19110018 JWSC W.O. 19131063