

District I  
1625 N. French Dr., Hobbs, NM 88240  
Phone: (575) 393-6161 Fax: (575) 393-0720  
District II  
811 S. First St., Artesia, NM 88210  
Phone: (575) 748-1283 Fax: (575) 748-9720  
District III  
1000 Rio Brazos Road, Aztec, NM 87410  
Phone: (505) 334-6178 Fax: (505) 334-6170  
District IV  
1220 S. St. Francis Dr., Santa Fe, NM 87505  
Phone: (505) 476-3460 Fax: (505) 476-3462

HOBBS OGD  
MAR 11 2018  
RECEIVED

State of New Mexico  
Energy, Minerals & Natural Resources  
Department  
WILDERNESS CONSERVATION DIVISION  
1220 South St. Francis Dr.  
Santa Fe, NM 87505

BLM/F/P

FORM C-102

Revised August 1, 2011

Submit one copy to appropriate

District Office

☐ AMENDED REPORT

WELL LOCATION AND ACREAGE DEDICATION PLAT

<sup>1</sup> API Number 30-025-46980	<sup>2</sup> Pool Code 39845 98234 WC-025 G-09.4263619C; WC	<sup>3</sup> Pool Name
<sup>4</sup> Property Code 326326	<sup>5</sup> Property Name HOLLY FED COM 26 36 05 FED COM	<sup>6</sup> Well Number 103H
<sup>7</sup> GRID No. 372224	<sup>8</sup> Operator Name AMEREDEV OPERATING, LLC.	<sup>9</sup> Elevation 3001'

<sup>10</sup>Surface Location

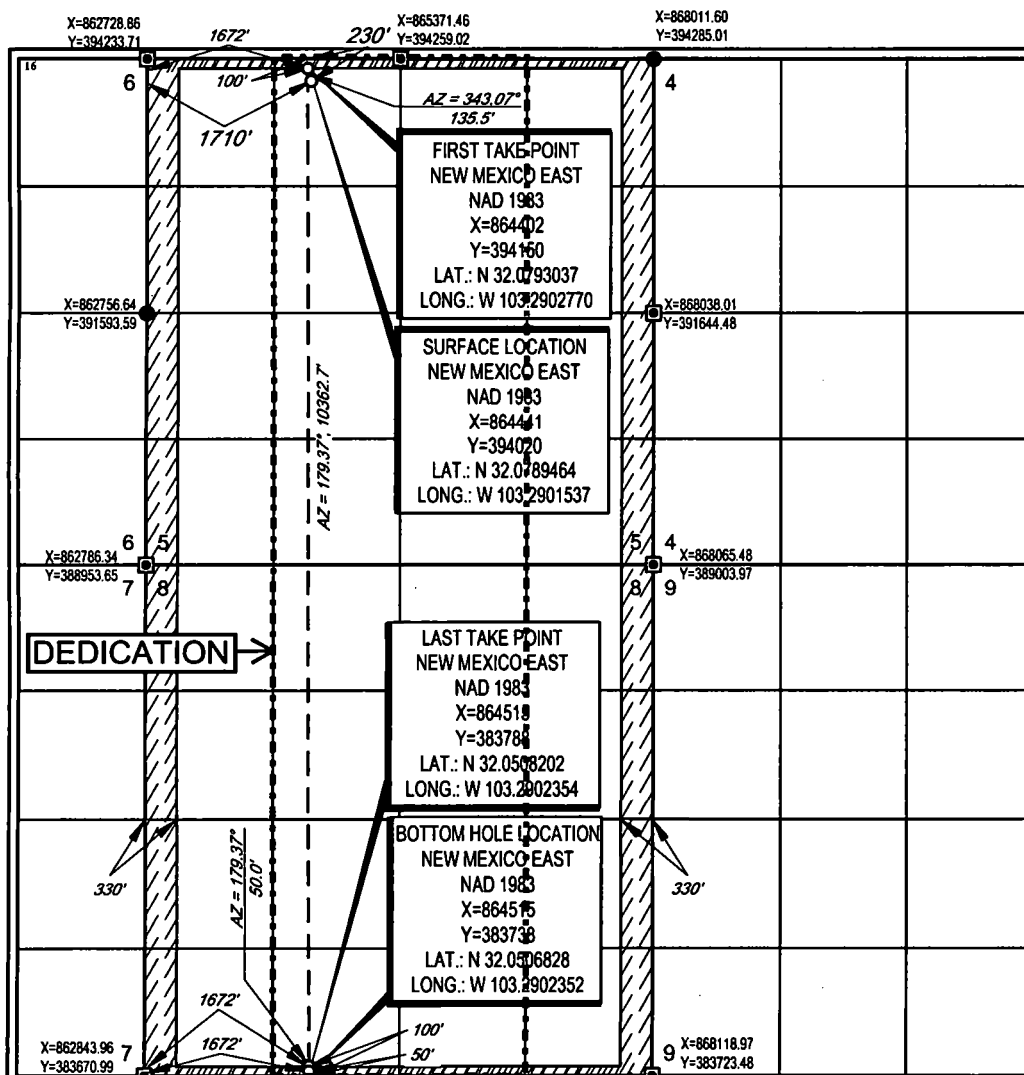
UL or lot no. C	Section 5	Township 26-S	Range 36-E	Lot Idn -	Feet from the 230'	North/South line NORTH	Feet from the 1710'	East/West line WEST	County LEA
--------------------	--------------	------------------	---------------	--------------	-----------------------	---------------------------	------------------------	------------------------	---------------

<sup>11</sup>Bottom Hole Location If Different From Surface

UL or lot no. N	Section 8	Township 26-S	Range 36-E	Lot Idn -	Feet from the 50'	North/South line SOUTH	Feet from the 1672'	East/West line WEST	County LEA
--------------------	--------------	------------------	---------------	--------------	----------------------	---------------------------	------------------------	------------------------	---------------

<sup>12</sup> Dedicated Acres 640	<sup>13</sup> Joint or Infill	<sup>14</sup> Consolidation Code C	<sup>15</sup> Order No.
--------------------------------------	-------------------------------	---------------------------------------	-------------------------

No allowable will be assigned to this completion until all interests have been consolidated or a non-standard unit has been approved by the division.



<sup>17</sup> OPERATOR CERTIFICATION	
I hereby certify that the information contained herein is true and complete to the best of my knowledge and belief, and that this organization either owns a working interest or unleased mineral interest in the land including the proposed bottom hole location or has a right to drill this well at this location pursuant to a contract with an owner of such a mineral or working interest, or to a voluntary pooling agreement or a compulsory pooling order heretofore entered by the division.	
Signature	Date
Floyd Hammond	
Printed Name	
fhammond@amerev.com	
E-mail Address	
<sup>18</sup> SURVEYOR CERTIFICATION	
I hereby certify that the well location shown on this plat was plotted from field notes of actual surveys made by me or under my supervision, and that the same is true to the best of my belief.	
Date of Survey	05/01/2018
Signature of Professional Surveyor	MICHAEL BROWN
	18329
	PROFESSIONAL SURVEYOR
Certificate Number	