

District I  
1625 N. French Dr., Hobbs, NM 88240  
District II  
1301 W. Grand Avenue, Artesia, NM 88210  
District III  
1000 Rio Brazos Road, Aztec, NM 87410  
District IV  
1220 S. St. Francis Dr., Santa Fe, NM 87505

State of New Mexico  
Energy Minerals and Natural Resources

Form C-101  
May 27, 2004

Oil Conservation Division  
1220 South St. Francis Dr.  
Santa Fe, NM 87505

Submit to appropriate District Office

AMENDED REPORT

**APPLICATION FOR PERMIT TO DRILL, RE-ENTER, DEEPEN, PLUGBACK, OR ADD A ZONE**

<sup>1</sup> Operator Name and Address Range Operating New Mexico, Inc. 100 Throckmorton St., Ste. 1200 Fort Worth, TX 76102		<sup>2</sup> OGRID Number 227588
		<sup>3</sup> API Number 30 - 025-37692
<sup>4</sup> Property Code 301551	<sup>5</sup> Property Name New Mexico M State	<sup>6</sup> Well No. 053
<sup>9</sup> Proposed Pool 1 Blinebry Oil & Gas		<sup>10</sup> Proposed Pool 2

<sup>7</sup> Surface Location

UL or lot no.	Section	Township	Range	Lot Idn	Feet from the	North/South line	Feet from the	East/West line	County
O	18	22S	37E		330	South	1650	East	Lea

<sup>8</sup> Proposed Bottom Hole Location If Different From Surface

UL or lot no.	Section	Township	Range	Lot Idn	Feet from the	North/South line	Feet from the	East/West line	County

Additional Well Information

<sup>11</sup> Work Type Code A	<sup>12</sup> Well Type Code O	<sup>13</sup> Cable/Rotary	<sup>14</sup> Lease Type Code S	<sup>15</sup> Ground Level Elevation 3414
<sup>16</sup> Multiple Y	<sup>17</sup> Proposed Depth 6804	<sup>18</sup> Formation Blinebry	<sup>19</sup> Contractor	<sup>20</sup> Spud Date
Depth to Groundwater		Distance from nearest fresh water well		Distance from nearest surface water
Pit: Liner: Synthetic <input type="checkbox"/> _____ mils thick Clay <input type="checkbox"/>		Pit Volume: _____ bbs		Drilling Method:
Closed-Loop System <input type="checkbox"/>		Fresh Water <input type="checkbox"/> Brine <input type="checkbox"/> Diesel/Oil-based <input type="checkbox"/> Gas/Air <input type="checkbox"/>		

<sup>21</sup> Proposed Casing and Cement Program

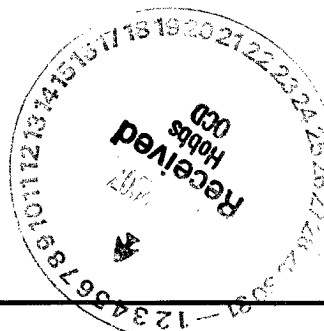
Hole Size	Casing Size	Casing weight/foot	Setting Depth	Sacks of Cement	Estimated TOC

<sup>22</sup> Describe the proposed program. If this application is to DEEPEN or PLUG BACK, give the data on the present productive zone and proposed new productive zone. Describe the blowout prevention program, if any. Use additional sheets if necessary.

Add Blinebry pers from 5669 - 5874'; 5515 - 5584.

Permit Expires 1 Year From Approval  
Date Unless Drilling Underway

*Adding*



<sup>23</sup> I hereby certify that the information given above is true and complete to the best of my knowledge and belief. I further certify that the drilling pit will be constructed according to NMOCD guidelines , a general permit , or an (attached) alternative OCD-approved plan .

Signature: *Paula Hale*

Printed name: Paula Hale

Title: Sr. Reg. Sp.

E-mail Address: phale@rangeresources.com

Date: 5-3-07

Phone: 817-869-4216

OIL CONSERVATION DIVISION

Approved by: *Chris Williams*

Title: DISTRICT SUPERVISOR/GENERAL MANAGER

Approval Date:      Expiration Date:

**MAY 09 2007**

Conditions of Approval Attached

State of New Mexico

Energy, Minerals and Natural Resources Department

DISTRICT I

1625 N. FRENCH DR., HOBBBS, NM 88240

DISTRICT II

1301 W. GRAND AVENUE, ARTESIA, NM 88210

DISTRICT III

1000 Rio Brazos Rd., Aztec, NM 87410

DISTRICT IV

1220 S. ST. FRANCIS DR., SANTA FE, NM 87505

OIL CONSERVATION DIVISION

1220 SOUTH ST. FRANCIS DR.  
Santa Fe, New Mexico 87505

Form C-102  
Revised October 12, 2005  
Submit to Appropriate District Office  
State Lease - 4 Copies  
Fee Lease - 3 Copies

WELL LOCATION AND ACREAGE DEDICATION PLAT

AMENDED REPORT

API Number 30-025-37692		Pool Code 06660	Pool Name Blinebry Oil & Gas
Property Code 301551	Property Name NEW MEXICO "M" STATE		Well Number 53
OGRID No. 227588	Operator Name RANGE OPERATING NEW MEXICO, INC.		Elevation 3410'

Surface Location

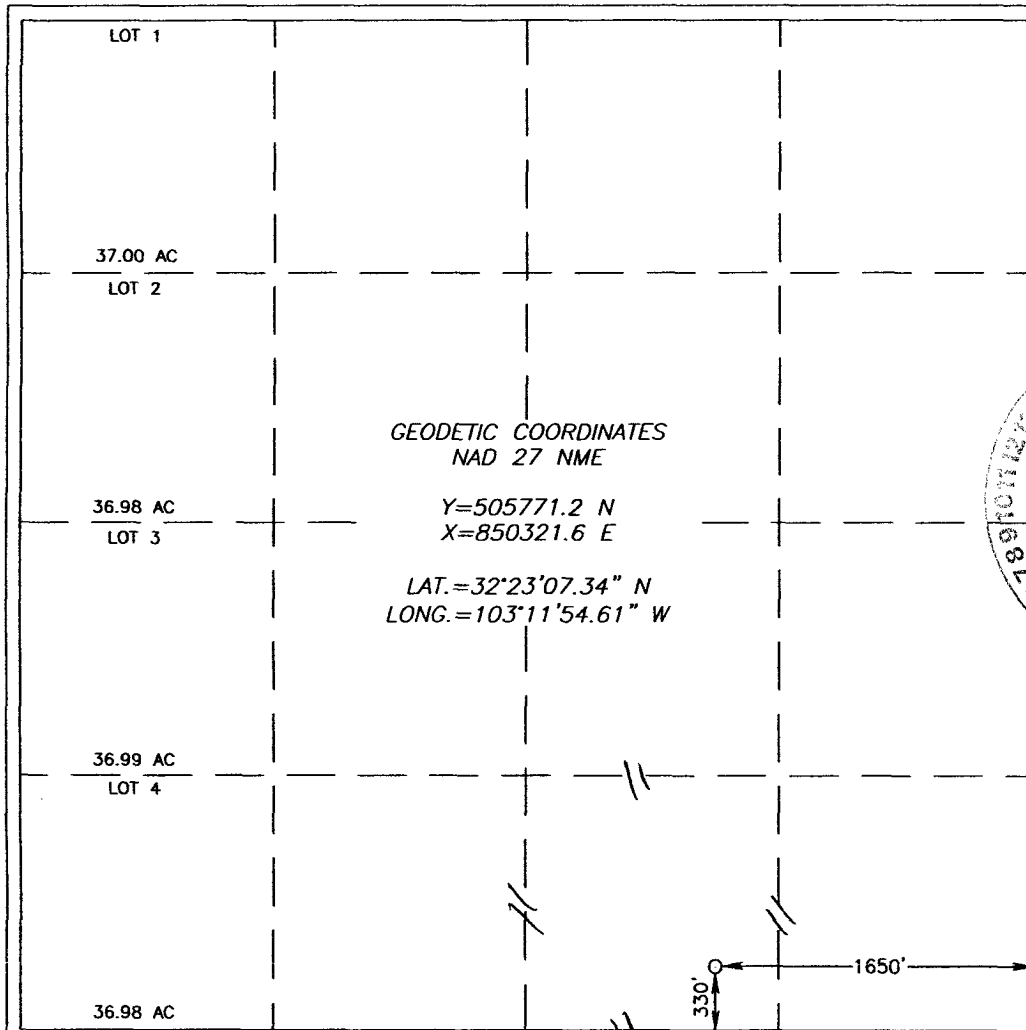
UL or lot No.	Section	Township	Range	Lot Idn	Feet from the	North/South line	Feet from the	East/West line	County
0	18	22-S	37-E		330	SOUTH	1650	EAST	LEA

Bottom Hole Location If Different From Surface

UL or lot No.	Section	Township	Range	Lot Idn	Feet from the	North/South line	Feet from the	East/West line	County

Dedicated Acres 40	Joint or Infill	Consolidation Code	Order No.
-----------------------	-----------------	--------------------	-----------

NO ALLOWABLE WILL BE ASSIGNED TO THIS COMPLETION UNTIL ALL INTERESTS HAVE BEEN CONSOLIDATED OR A NON-STANDARD UNIT HAS BEEN APPROVED BY THE DIVISION



**OPERATOR CERTIFICATION**

I hereby certify that the information herein is true and complete to the best of my knowledge and belief, and that this organization either owns a working interest or unleased mineral interest in the land including the proposed bottom hole location or has a right to drill this well at this location pursuant to a contract with an owner of such mineral or working interest, or to a voluntary pooling agreement or a compulsory pooling order heretofore entered by the division.

5-03-07  
Date

Signature \_\_\_\_\_  
Sr. Reg. Spc.  
Printed Name \_\_\_\_\_

**SURVEYOR CERTIFICATION**

I hereby certify that the well location shown on this plat was plotted from field notes of actual surveys made by me or under my supervision and that the same is true and correct to the best of my belief.

JANUARY 27, 2006  
Date Surveyed

DSR REV: 2/7/06

Signature & Seal of Professional Surveyor  
GARY EIDSON  
NEW MEXICO  
06.11.0225

Certificate No. GARY EIDSON 12641