

Submit 1 Copy To Appropriate District  
 Office  
 District I  
 1625 N. French Dr., Hobbs, NM 88240  
 District II  
 1301 W. Grand Ave., Artesia, NM 88210  
 District III  
 1000 Rio Brazos Rd., Aztec, NM 87410  
 District IV  
 1220 S. St. Francis Dr., Santa Fe, NM 87505

State of New Mexico  
 Energy, Minerals and Natural Resources  
**RECEIVED**  
 OIL CONSERVATION DIVISION  
 1220 South St. Francis Dr.  
 Santa Fe, NM 87505

Form C-103  
 October 13, 2009

SUNDRY NOTICES AND REPORTS ON WELLS (DO NOT USE THIS FORM FOR PROPOSALS TO DRILL OR TO DEEPEN OR PLUG BACK TO A DIFFERENT RESERVOIR. USE "APPLICATION FOR PERMIT" (FORM C-101) FOR SUCH PROPOSALS.)		WELL API NO. 30-025-05177 ✓
1. Type of Well: Oil Well <input checked="" type="checkbox"/> Gas Well <input type="checkbox"/> Other <input checked="" type="checkbox"/>		5. Indicate Type of Lease STATE <input type="checkbox"/> FEE <input checked="" type="checkbox"/> ✓
2. Name of Operator Celero Energy II, LP		6. State Oil & Gas Lease No.
3. Address of Operator 400 W. Illinois, Ste. 1601 Midland, TX 79701		7. Lease Name or Unit Agreement Name B. C. Dickinson D ✓
4. Well Location Unit Letter <u>E</u> : 1980 feet from the <u>North</u> line and <u>660</u> feet from the <u>West</u> line Section <u>35</u> Township <u>14S</u> Range <u>37E</u> NMPM County/Lea ✓		8. Well Number <u>3</u> ✓
11. Elevation (Show whether DR, RKB, RT, GR, etc.) 3822' GL		9. OGRID Number 247128 ✓
		10. Pool name or Wildcat Denton; Devonian ✓

12. Check Appropriate Box to Indicate Nature of Notice, Report or Other Data

NOTICE OF INTENTION TO:

- PERFORM REMEDIAL WORK  PLUG AND ABANDON   
 TEMPORARILY ABANDON  CHANGE PLANS   
 PULL OR ALTER CASING  MULTIPLE COMPL   
 DOWNHOLE COMMINGLE

SUBSEQUENT REPORT OF:

- REMEDIAL WORK  ALTERING CASING   
 COMMENCE DRILLING OPNS.  P AND A   
 CASING/CEMENT JOB

OTHER:

OTHER: TA'd

13. Describe proposed or completed operations. (Clearly state all pertinent details, and give pertinent dates, including estimated date of starting any proposed work). SEE RULE 19.15.7.14 NMAC. For Multiple Completions: Attach wellbore diagram of proposed completion or recompletion.

10/5/10 - ND B1 tbg hanger flange. NUBOP. RIH w/ BP perf sub, 300 jts of 2 7/8" 6.5# L-80 8rd tbg. No fluid to surface.

10/6/10 - Tag w/ 380 jts + 5' @ 12,287'. Break circ w/ 22 bbls gone, mix 55 sx class "C" cmt w/ 3# p/sx sand in 1st 25 sx, displace w/ 65 BFW. Flowed 1/2 bbl back, POH w/ 15 jts to 365 jts in @ 11,793'. Reverse circ 3 bbls cmt out of hole. POH w/ 10 stands, WOC 3 hours. RIH & tag @ 12,027'. Load csg w/ 13 BFW, psi to 600, bled 300 psi in 5 mins, mix 55 sx class "H" cmt, displace w/ 65 BFW, SD, flowed back 2 bbls. POH w/ 15 jts to 11,533'. Reverse circ 5 bbls cmt out of hole. POH w/ 20 stands tbg.

10/7/10 - RIH & tag @ 11,500', set 10 pts wt, load well w/ 20 BFW, psi to 600#, bled to 300# psi in 5 min. POH w/ tbg & BP perf sub. RIH w/ 5 1/2" csg scraper, 356 jts of 2 7/8" tbg to 11,500'. POH w/ tbg & scraper

10/8/10 - RIH w/40 arm caliper w/magnetic thickness from TD to surf. RIH w/CCL/GR/radial bond log from TD to top of fluid @ 1,042'. \* Continued on attached sheet

Spud Date:

Rig Release Date:

This Approval of Temporary Abandonment Expires 10-21-2012

I hereby certify that the information above is true and complete to the best of my knowledge and belief.

SIGNATURE Lisa Hunt TITLE Regulatory Analyst DATE 10/25/2010

Type or print name Lisa Hunt E-mail address: lhunt@celeroenergy.com PHONE: (432)686-1883

**For State Use Only**

APPROVED BY [Signature] TITLE STATE MGR DATE 11-1-10

Conditions of Approval (if any):

*[Handwritten mark]*

**B. C. Dickinson D #3 – C-103 attachment continued**

**10/11/10** - RIH w/ 5 ½" cst pkr. Set @ 6,000'. Test below pkr to 600 psi w/ chart recorder. No bleed off in 15 mins, set pkr @ 5,937', communicated, set pkr @ 5,904', tested csg to 600 psi, bled off 10 psi in 15 mins. Est inj rate ¼ bpm @ 900 psi, psi increased to 1,000 psi in 2 ½ minutes. SD, psi bled off in 2 minutes. POH w/ pkr. RIH w/ TS bridge plug & Cst pkr, set bridge plug @ 6,400' w/ 198 jts + 10' ln, pull 1 jt, set pkr @ 6,388', test BP to 1,500 psi. POH to 5,904', set pkr, open bypass. Spot 200 gals 15% NeFe acid to end of tbg, close bypass, psi tbg to 1,500 psi ½ bpm, acid on hole, rate increased to 1 bpm @ 1,500 psi. Over displaced w/ 10 BFW, SD, 4 minutes on vacuum. RIH to 6,388', spot 2 sx sand on RBP. POH to 5,681', test csg to 600 psi, unset pkr & leave swinging.

**10/12/10** - POH w/ 2 jts, set pkr @ 5,616' w/ 174 jts in hole. Load csg w/ 20 bbls, psi to 500 psi, establish injection rate 1.3 bpm @ 1,600 psi, mix 50 sx Class "H" cmt w/ 2% CaC12 & 4/10% C-15 retarder, mix 1<sup>st</sup> 25 sx @ 14.2 ppg, last 25 sx @ 14.8 ppg, Displace w/ 34 bbls, start hesitation squeeze, obtained 2,000# squeeze w/ 36.5 bbls gone, open bypass, reverse tbg clean, pull 10 jts, set pkr @ 5,296', psi tbg to 1,500 psi, no leak off.

**10/13/10** - RIH w/ 4 ¾" bit, bit sub, 6- 3 ½" DC's, x-over, 173 jts of 2 7/8" tbg, tag @ 5,761'. NU stripper head. PU power swivel, break reverse circulation, start drlg cmt, drill cmt to 5,825', getting green cmt in returns, reverse hole clean.

**10/14/10** - Drl cmt, fell out of cmt @ 5,943'. Reverse hole clean, psi csg to 600, bled off 85 psi in 15 min, 160 psi in 30 min. POH w/ tbg, collars & bit. RIH w/ 155 jts.

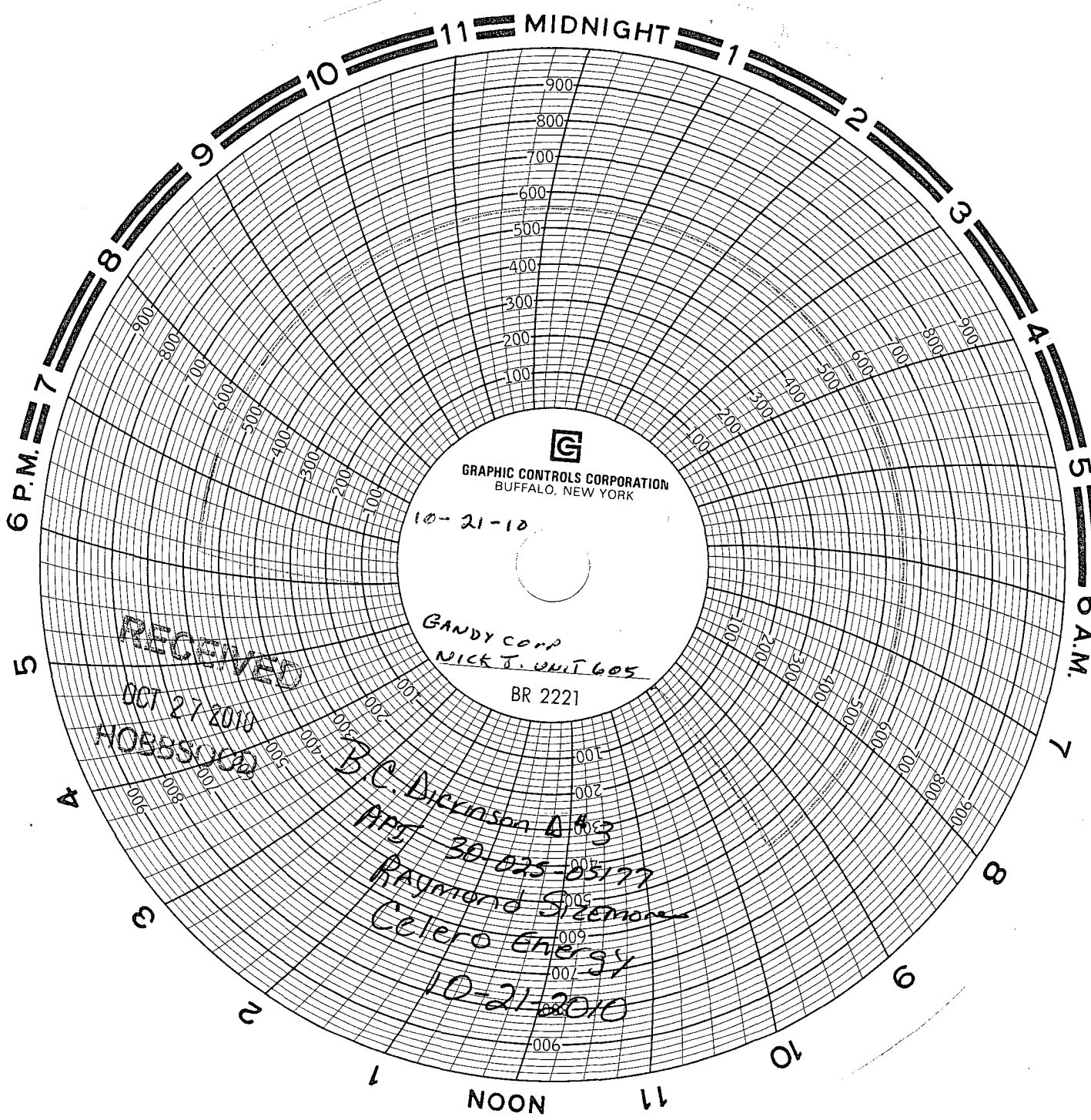
**10/15/10** - POH w/ 155 jts tbg. RIH w/ 5 ½" pkr, 183 jts tbg, set pkr @ 5,904'. Psi tbg to 640 psi, bled to 300 psi in 30 minutes, psi csg to 720 psi in 15 minutes, unset pkr. RIH to 6,000', psi tbg to 760 psi, no leak off in 15 minutes. POH w/ tbg & pkr. RIH w/ 185 jts of 2 7/8" tbg to 5,961'. Pump 90 BFW, mix 15 sx of Class "C" cmt w/ 2% CaC12, displace w/ 33 ½ bbls. POH w/ 10 jts tbg to 5,641'. Wash up pumps & lines, reverse out w/ 50 BFW, psi csg to 600 psi to start hesitation squeeze, bled 50 psi in 30 mins, pressure to 600 psi, bled 40 psi in 30 mins, pressure to 600 psi, bled 20 psi in 30 mins, psi to 600 psi, held. Hesitated w/ 3/8 bbls.

**10/18/10** - RIH w/ 4 ¾" bit, bit sub, 6- 3 ½" DC's, x-over, 172 jts + 25' 2 7/8" tbg, tag cmt @ 5,744', NU stripper head, PU power swivel, drill cmt. Fell out @ 5,948', reverse circ. hole clean, psi to 500 psi, bled to 380 in 30 min. POH to 1 jt tbg & collars in hole.

**10/19/10** - POH, LD DC's. RIH w/ TS overshot, 198 ½ jts, reverse sand off TS bridge plug, unset & POH w/ bridge plug, 2 drag blocks missing off TS bridge plug. RIH w/ BP perf sub, 356 jts of 2 7/8" tbg to 11,500', pump 80 BFW, mix & pump 100 bbls salt mud. Displace w/ 39 BFW. POH, LD 75 jts of 2 7/8" tbg. SWI. SDFN.

**10/20/10** - POH w/ 17 jts of 2 7/8" tbg, end of tbg @ 8,515'. Break circ w/ 10 BFW, spot 25 sx Class "C" balanced cmt plug from 8,515' to 8,268'. POH w/ 78 jts of 2 7/8" tbg, end of tbg @ 5,998'. Pump 100 BFW, spot 25 sx Class "C" balanced cmt plug from 5,998' to 5,751'. POH w/ 10 jts of 2 7/8" tbg, end of tbg @ 5,674'. Wash up pumps & lines, reverse tbg clean, pull 10 jts, psi to 600 psi, bled 20 psi in 30 min.

\* **10/21/10** - RIH & tag @ 5,784', set 14 pts, circ hole w/ 135 BFW w/ 1% KCW-1725 scale inhibitor. POH, LD tbg. NDBOP. NU B1 tbg hanger flange, open surface & intermediate valves. Notified Maxey Brown w/ NMOCD. Ran required csg integrity test. Test csg for 35 mins from 560# psi w/slight leak of less than 10# psi. Test good. Original chart is attached. Well now TA'd for 2 years.



GRAPHIC CONTROLS CORPORATION  
BUFFALO, NEW YORK

10-21-10

GANDY CORP  
NICK J. WHIT 605  
BR 2221

RECEIVED

OCT 27 2010

HOBBSS002

B.C. Dickerson 483  
APT 30-025-05177

Raymond Steenore

Celero Energy

10-21-2010