

DISTRICT I
1825 N. French Dr., Hobbs, NM 88240

DISTRICT II
1301 W. Grand Avenue, Artesia, NM 88210

DISTRICT III
1000 Rio Brazos Rd., Aztec, NM 87410

DISTRICT IV
1220 S. St. Francis Dr., Santa Fe, NM 87505

RECEIVED

State of New Mexico
Energy, Minerals and Natural Resources Department

Form C-102
Revised July 16, 2010

Submit one copy to appropriate
District Office

NOV 30 2010

HOBSOCD

OIL CONSERVATION DIVISION

1220 South St. Francis Dr.
Santa Fe, New Mexico 87505

WELL LOCATION AND ACREAGE DEDICATION PLAT

AMENDED REPORT

| | | |
|-----------------------------------|---|--|
| API Number 30-025-39964 | Pool Code 22900 | Pool Name Eunice; Bli-Tu-Dr, North |
| Property Code 37346 | Property Name WEST BLINEBRY DRINKARD UNIT | Well Number 128 |
| OGRID No. 873 | Operator Name APACHE CORPORATION | Elevation 3474' |

Surface Location

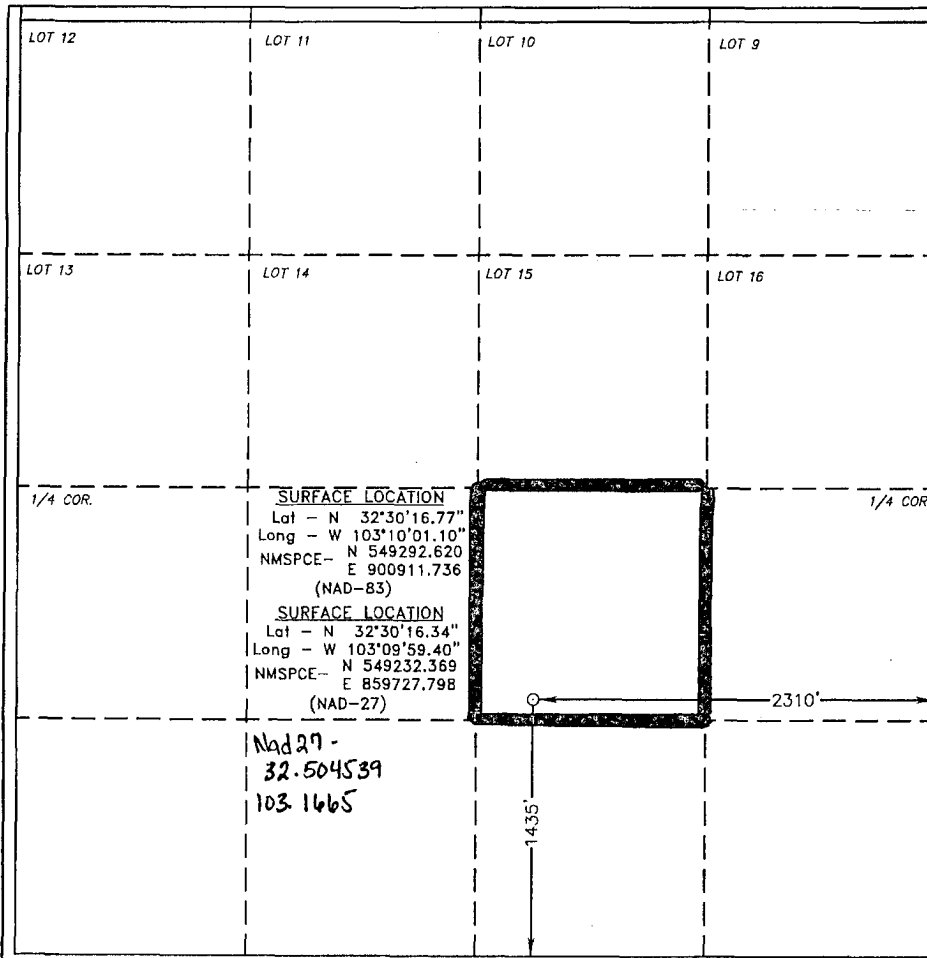
| UL or lot No. | Section | Township | Range | Lot Idn | Feet from the | North/South line | Feet from the | East/West line | County |
|---------------|---------|----------|-------|---------|---------------|------------------|---------------|----------------|--------|
| J | 4 | 21 S | 37 E | | 1435 | SOUTH | 2310 | EAST | LEA |

Bottom Hole Location If Different From Surface

| UL or lot No. | Section | Township | Range | Lot Idn | Feet from the | North/South line | Feet from the | East/West line | County |
|---------------|---------|----------|-------|---------|---------------|------------------|---------------|----------------|--------|
| | | | | | | | | | |

| | | | |
|------------------------------|-----------------|--------------------|-----------|
| Dedicated Acres 40 | Joint or Infill | Consolidation Code | Order No. |
|------------------------------|-----------------|--------------------|-----------|

NO ALLOWABLE WILL BE ASSIGNED TO THIS COMPLETION UNTIL ALL INTERESTS HAVE BEEN CONSOLIDATED OR A NON-STANDARD UNIT HAS BEEN APPROVED BY THE DIVISION



OPERATOR CERTIFICATION

I hereby certify that the information contained herein is true and complete to the best of my knowledge and belief, and that this organization either owns a working interest or unleased mineral interest in the land including the proposed bottom hole location or has a right to drill this well at this location pursuant to a contract with an owner of such a mineral or working interest, or to a voluntary pooling agreement or a compulsory pooling order heretofore entered by the division.

Sorina L. Flores 11/29/10
Signature Date

Sorina L. Flores
Printed Name

sorina.flores@apachecorp.com
Email Address

SURVEYOR CERTIFICATION

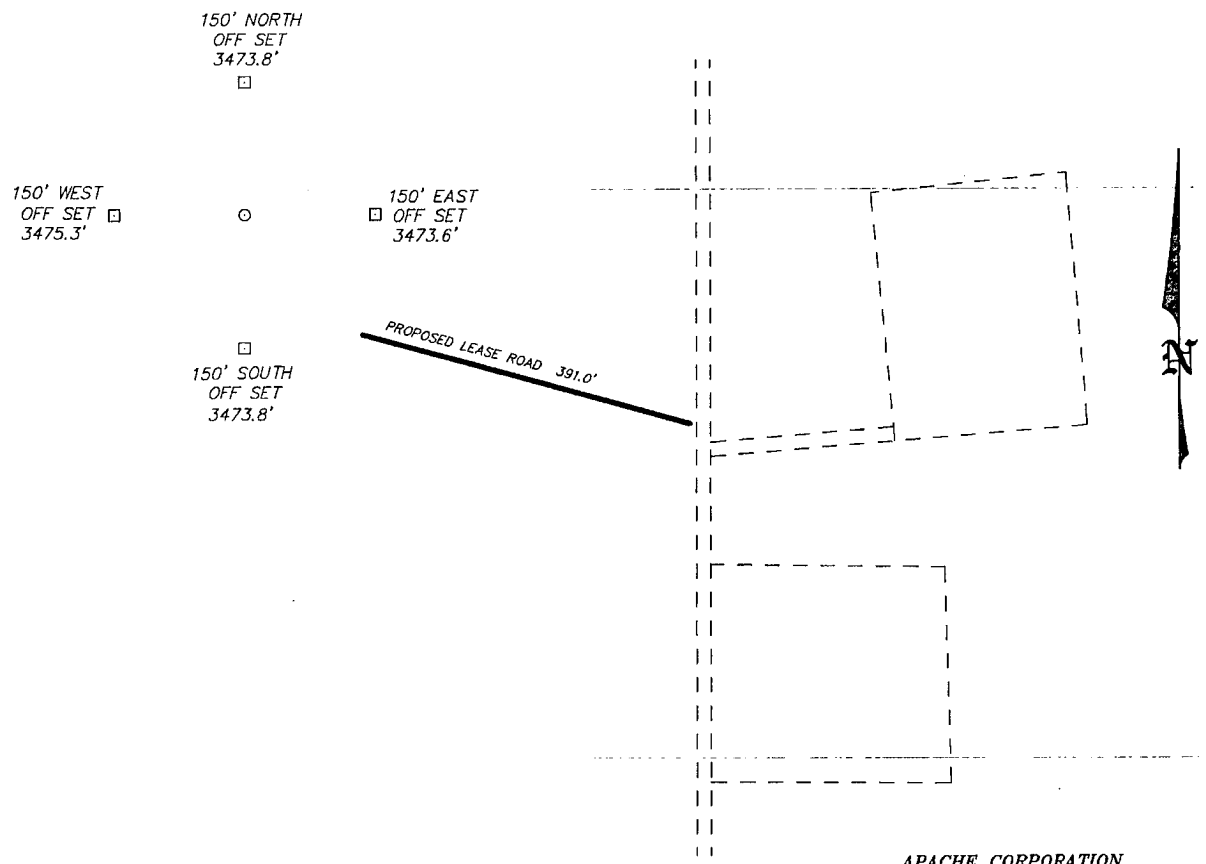
I hereby certify that the well location shown on this plat was plotted from field notes of actual surveys made by me or under my supervision and that the same is true and correct to the best of my belief.

NOVEMBER 10 2010
Date Surveyed
Signature & Seal of Professional Surveyor
Gary L. Jones
Professional Land Surveyor
7977

Certificate No. Gary L. Jones 7977

BASIN SURVEYS 23756

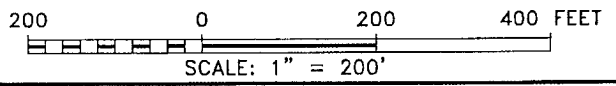
SECTION 4, TOWNSHIP 21 SOUTH, RANGE 37 EAST, N.M.P.M.,
LEA COUNTY, NEW MEXICO.



APACHE CORPORATION
WEST BLINEBRY DRINKARD UNIT #128
 ELEV. - 3474'

Lat - N 32°30'16.77"
 Long - W 103°10'01.10"
 NMSPC- N 549292.620
 E 900911.736
 (NAD-83)

Lat - N 32°30'16.34"
 Long - W 103°09'59.40"
 NMSPC- N 549232.369
 E 859727.798
 (NAD-27)



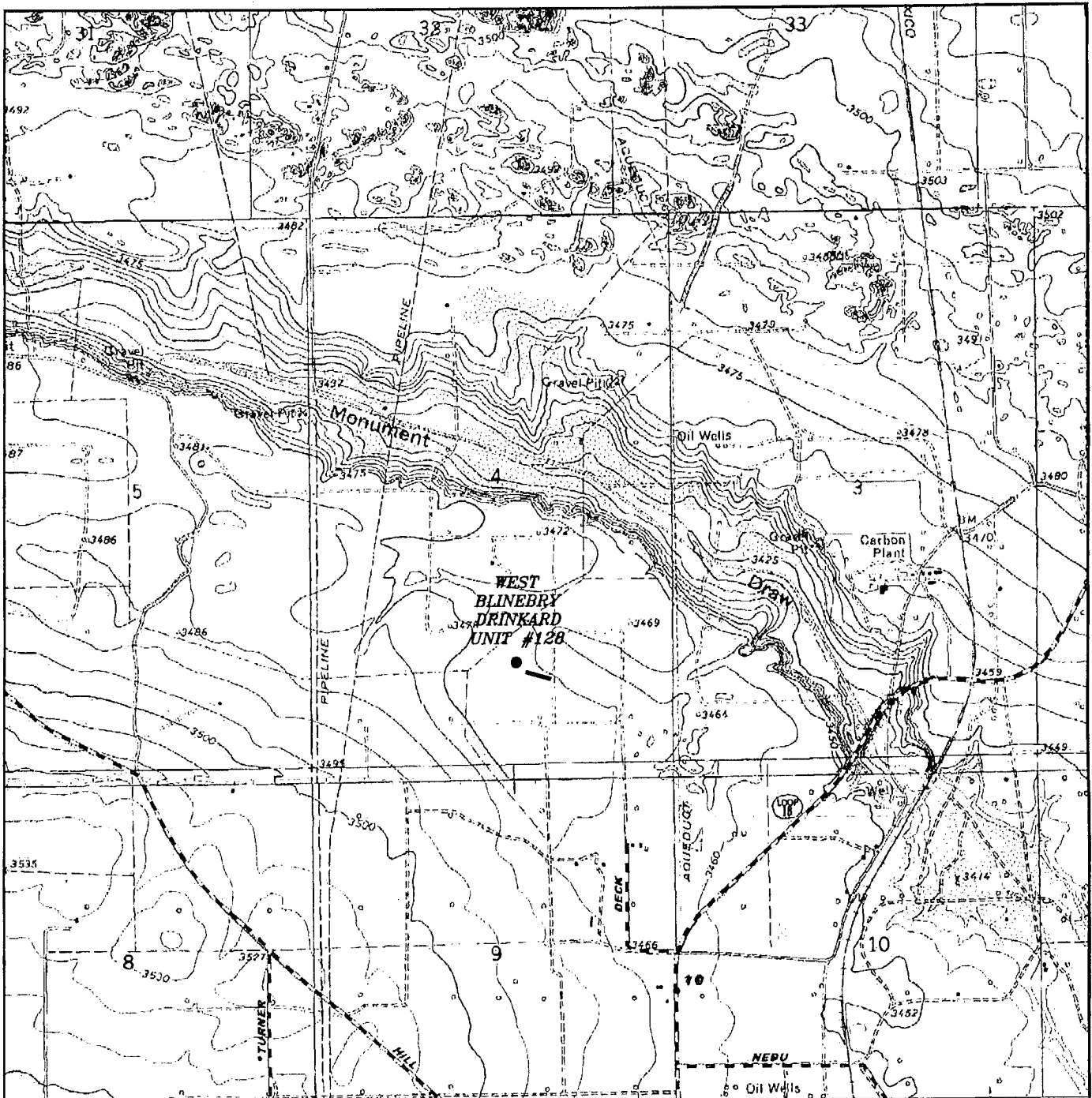
Directions to Location:

FROM THE JUNCTION OF STATE HWY 207 AND CO.
 RD. DECK, TO WEST 0.3 MILES; THENCE NORTH 0.5
 MILES TO A CURVE GOING NORTH 0.2 MILES TO
 PROPOSED LEASE ROAD.

| | |
|---|---------------------|
| APACHE CORPORATION | |
| REF: WEST BLINEBRY DRINKARD UNIT #128 / WELL PAD TOPO | |
| THE WEST BLINEBRY DRINKARD UNIT #128 LOCATED 1435' | |
| FROM THE SOUTH LINE AND 2310' FROM THE EAST LINE OF | |
| SECTION 4, TOWNSHIP 21 SOUTH, RANGE 37 EAST, | |
| N.M.P.M., LEA COUNTY, NEW MEXICO. | |
| W.O. Number: 23756 | Drawn By: J. SMALL |
| Date: 11-24-2010 | Disk: JMS 23756 |
| Survey Date: 11-19-2010 | Sheet 1 of 1 Sheets |

BASIN SURVEYS P.O. BOX 1786--HOBBS, NEW MEXICO

| | |
|--------------------|--------------------|
| W.O. Number: 23756 | Drawn By: J. SMALL |
| Date: 11-24-2010 | Disk: JMS 23756 |



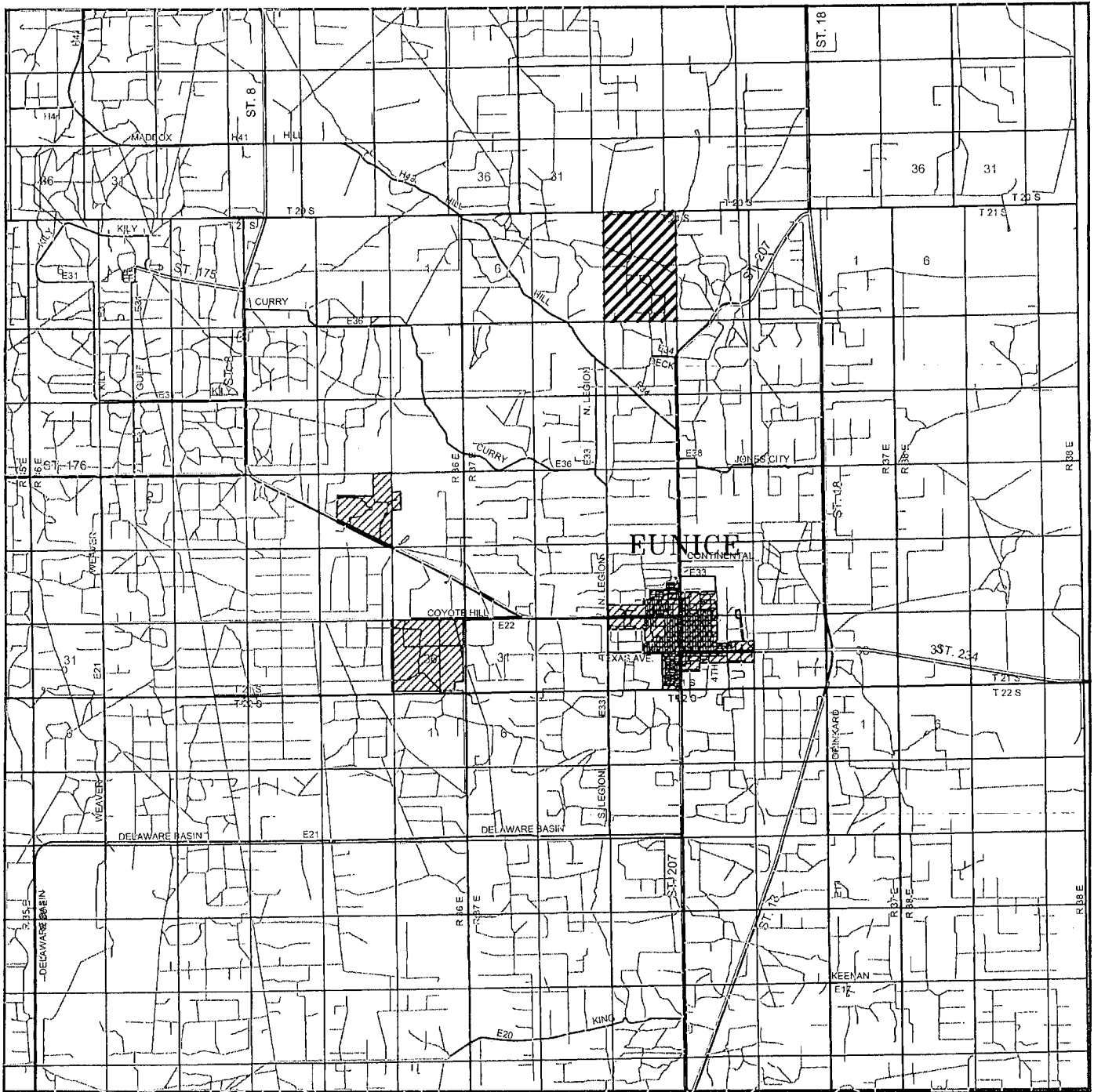
WEST BLINEBRY DRINKARD UNIT #128
 Located 1435' FSL and 2310' FEL
 Section 4, Township 21 South, Range 37 East,
 N.M.P.M., Lea County, New Mexico.



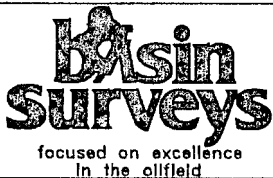
P.O. Box 1786
 1120 N. West County Rd.
 Hobbs, New Mexico 88241
 (575) 393-7316 - Office
 (575) 392-2206 - Fax
 basinsurveys.com

W.O. Number: JMS 23756
 Survey Date: 11-19-2010
 Scale: 1" = 2000'
 Date: 11-24-2010

**APACHE
 CORPORATION**



WEST BLINEBRY DRINKARD UNIT #128
 Located 1435' FSL and 2310' FEL
 Section 4, Township 21 South, Range 37 East,
 N.M.P.M., Lea County, New Mexico.



P.O. Box 1786
 1120 N. West County Rd.
 Hobbs, New Mexico 88241
 (575) 393-7316 - Office
 (575) 392-2206 - Fax
 basinsurveys.com

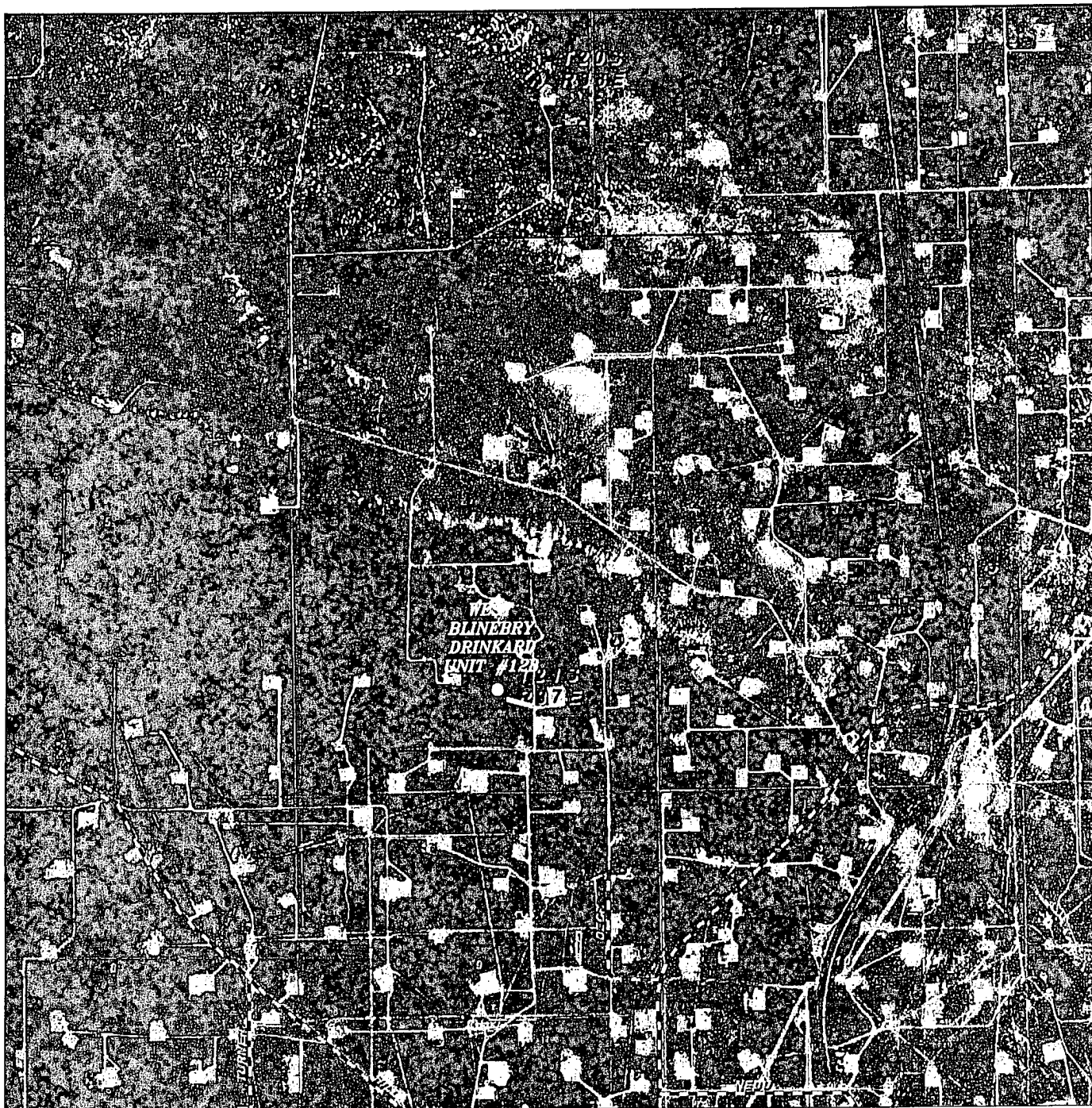
W.O. Number: JMS 23756

Survey Date: 11-19-2010

Scale: 1" = 2 Miles

Date: 11-24-2010

APACHE
 CORPORATION



WEST BLINEBRY DRINKARD UNIT #128
 Located 1435' FSL and 2310' FEL
 Section 4, Township 21 South, Range 37 East,
 N.M.P.M., Lea County, New Mexico.



P.O. Box 1786
 1120 N. West County Rd.
 Hobbs, New Mexico 88241
 (575) 393-7316 - Office
 (575) 392-2206 - Fax
 basinsurveys.com

W.O. Number: JMS 23756

Scale: 1" = 2000'

YELLOW TINT - USA LAND
 BLUE TINT - STATE LAND
 NATURAL COLOR - FEE LAND



APACHE CORPORATION