

DISTRICT I
1625 N. FRENCH DR., HOBBS, NM 88240

DISTRICT II
1301 W. GRAND AVENUE, ARTESIA, NM 88210

DISTRICT III
1000 Rio Brazos Rd., Aztec, NM 87410

DISTRICT IV
1220 S. ST. FRANCIS DR., SANTA FE, NM 87505

HOBBS OCD

MAY 25 2011

RECEIVED

State of New Mexico
Energy, Minerals and Natural Resources Department

OIL CONSERVATION DIVISION
1220 SOUTH ST. FRANCIS DR.
Santa Fe, New Mexico 87505

COG OPERATING LLC
RECEIVED
DEC 17 2010
Form C-102
Revised October 12, 2005
Submit to Appropriate District Office
State Lease Copies
Fee Lease Copies
ARTESIA WEST

WELL LOCATION AND ACREAGE DEDICATION PLAT

AMENDED REPORT

API Number 30-025-40154	Pool Code 41440	Pool Name Lusk Bone Spring
Property Code 38641	Property Name SL EAST 30 FEDERAL COM	Well Number 1H
OGRID No. 229137	Operator Name COG OPERATING, LLC	Elevation 3545'

Surface Location

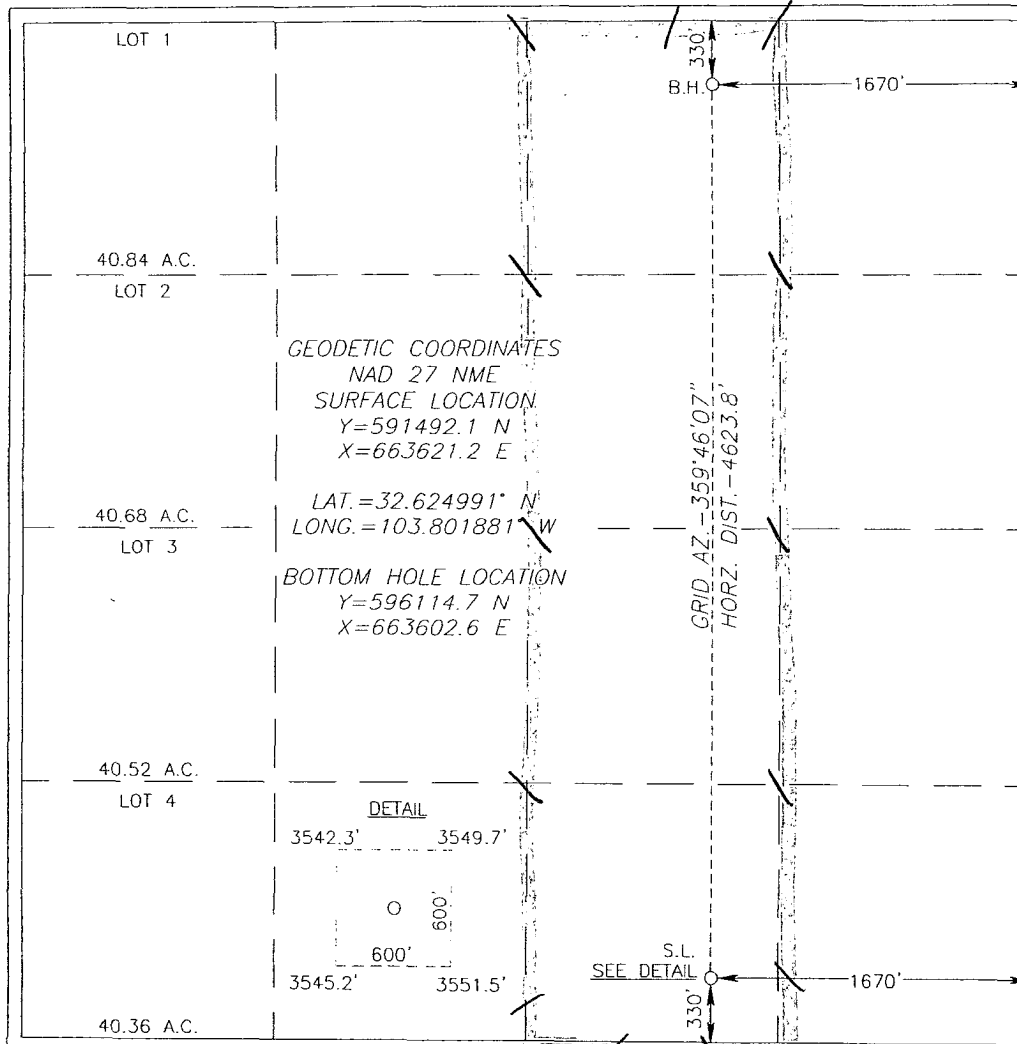
UL or lot No.	Section	Township	Range	Lot Idn	Feet from the	North/South line	Feet from the	East/West line	County
0	30	19-S	32-E		330	SOUTH	1670	EAST	LEA

Bottom Hole Location If Different From Surface

UL or lot No.	Section	Township	Range	Lot Idn	Feet from the	North/South line	Feet from the	East/West line	County
B	30	19-S	32-E		330	NORTH	1670	EAST	LEA

Dedicated Acres	Joint or Infill	Consolidation Code	Order No.

NO ALLOWABLE WILL BE ASSIGNED TO THIS COMPLETION UNTIL ALL INTERESTS HAVE BEEN CONSOLIDATED OR A NON-STANDARD UNIT HAS BEEN APPROVED BY THE DIVISION



OPERATOR CERTIFICATION

I hereby certify that the information herein is true and complete to the best of my knowledge and belief, and that this organization either owns a working interest or unleased mineral interest in the land including the proposed bottom hole location or has a right to drill this well at this location pursuant to a contract with an owner of such mineral or working interest, or to a voluntary pooling agreement or a compulsory pooling order heretofore entered by the division.

Rand French 1/19/11
Signature Date

Rand French
Printed Name

SURVEYOR CERTIFICATION

I hereby certify that the well location shown on this plat was plotted from field notes of actual surveys made by me or under my supervision, and that the same is true and correct to the best of my belief.

DECEMBER 17, 2010
Date Surveyed

Signature & Seal of Professional Surveyor
Ronald J. Eidson
10.11.169

Certification No. RONAED J. EIDSON 12641
3239