

District I  
 PO Box 1980, Hobbs, NM 88241-1980  
 District II  
 PO Drawer DD, Artesia, NM 88211-0719  
 District III  
 1000 Rio Brazos Rd., Aztec, NM 87410  
 District IV  
 PO Box 2088, Santa Fe, NM 87504-2088

State of New Mexico  
 Energy, Minerals & Natural Resources Department

OIL CONSERVATION DIVISION  
 PO Box 2088  
 Santa Fe, NM 87504-2088

Form C-102  
 Revised February 10, 1994  
 Instructions on back  
 Submit to Appropriate District Office  
 State Lease - 4 Copies  
 Fee Lease - 3 Copies

AMENDED REPORT

WELL LOCATION AND ACREAGE DEDICATION PLAT

API Number 30-041-20212		Pool Code 06880	Pool Name BLUITT SAN ANDRES ASSOCIATED
Property Code 016638	Property Name BLUITT 19 FEDERAL		Well Number 2
OGRID No. 017805	Operator Name PLAINS PETROLEUM OPERATING COMPANY		Elevation 4005' GR

Surface Location

UL or lot no.	Section	Township	Range	Lot Idn	Feet from the	North/South line	Feet from the	East/West line	County
B	19	8S	38E		660	North	1980	East	Roosevelt

Bottom Hole Location If Different From Surface

UL or lot no.	Section	Township	Range	Lot Idn	Feet from the	North/South line	Feet from the	East/West line	County

Dedicated Acres 80	Joint or Infill	Consolidation Code	Order No.
-----------------------	-----------------	--------------------	-----------

NO ALLOWABLE WILL BE ASSIGNED TO THIS COMPLETION UNTIL ALL INTERESTS HAVE BEEN CONSOLIDATED OR A NON-STANDARD UNIT HAS BEEN APPROVED BY THE DIVISION

16		660'	1980'	<p>17 OPERATOR CERTIFICATION</p> <p>I hereby certify that the information contained herein is true and complete to the best of my knowledge and belief.</p> <p><i>Bonnie Husband</i>          Signature          Bonnie Husband          Printed Name          Administrative Assistant          Title          3-31-95          Date</p>
		#2		

NSP-1724(L)

COUNTY ROOSEVELT FIELD Bluit, E. STATE NM 30-041-20212  
 OPR BAUMGARTNER OIL CO. MAP  
 1 USA  
 Sec 19, T-8-S, R-38-E CO-ORD  
 660' FNL, 1980' FEL of Sec.

Spd 7-8-69 Cmp 8-5-69	CLASS		EL	
	FORMATION	DATUM	FORMATION	DATUM
CSG & SX - TUBING				
8 5/8" at 325' w/200 sx				
4 1/2" at 4775' w/125 sx				
LOGS EL GR RA IND HC A				
	TD 4775'			

IP (San Andres) Perfs 4734-62' F 280 BOPD + 12 BW. Pot based on 12 hr test thru 3/4" chk, IP 450#

Distribution limited and publication prohibited by subscribers' agreement.  
 Reproduction rights reserved by Williams & Lee Scouting Service, Inc.

CONT. Verna #3 PROP DEPTH 4800' TYPE RT  
 DATE

F.R. 6-24-69; Opr's Elev. 4014' KB  
 PD 4800' RT (San Andres)  
 Contractor - Verna #3  
 7-15-69 Drig. 4650'  
 7-22-69 TD 4775'; WOUU  
 7-29-69 TD 4775'; Tight  
 8-6-69 TD 4775'; Tight  
 8-11-69 TD 4775'; Tight  
 8-18-69 TD 4775'; WO Pot  
 Perf 4592-4632' w/12 shots, 4632-81' w/22 shots,  
 4684-4706' w/16 shots  
 Acid (4592-4706') 5000 gals  
 Flwd gas @ est 300 MCF/GPD (4592-4706')  
 Perf 4734-54', 4760-62' w/2 SPF  
 Acid (4734-4760') 5000 gals  
 Swbd 4 BOPH

ROOSEVELT Bluit, E. NM Sec 19, T-8-S, R-38-E  
BAUMGARTNER OIL CO. #1 USA Page 2

8-25-69 TD 4775'; COMPLETE  
LOG TOPS: Yates 2700', San Andres 3948', Pi  
Zone 4485'  
Perfs 4592-4706', Packed Off  
8-28-69 COMPLETION REPORTED

NEW MEXICO OIL CONSERVATION COMMISSION  
WELL LOCATION AND ACREAGE DEDICATION PLAT

Form C-102  
Supersedes C-128  
Effective 1-1-65

All distances must be from the outer boundaries of the Section.

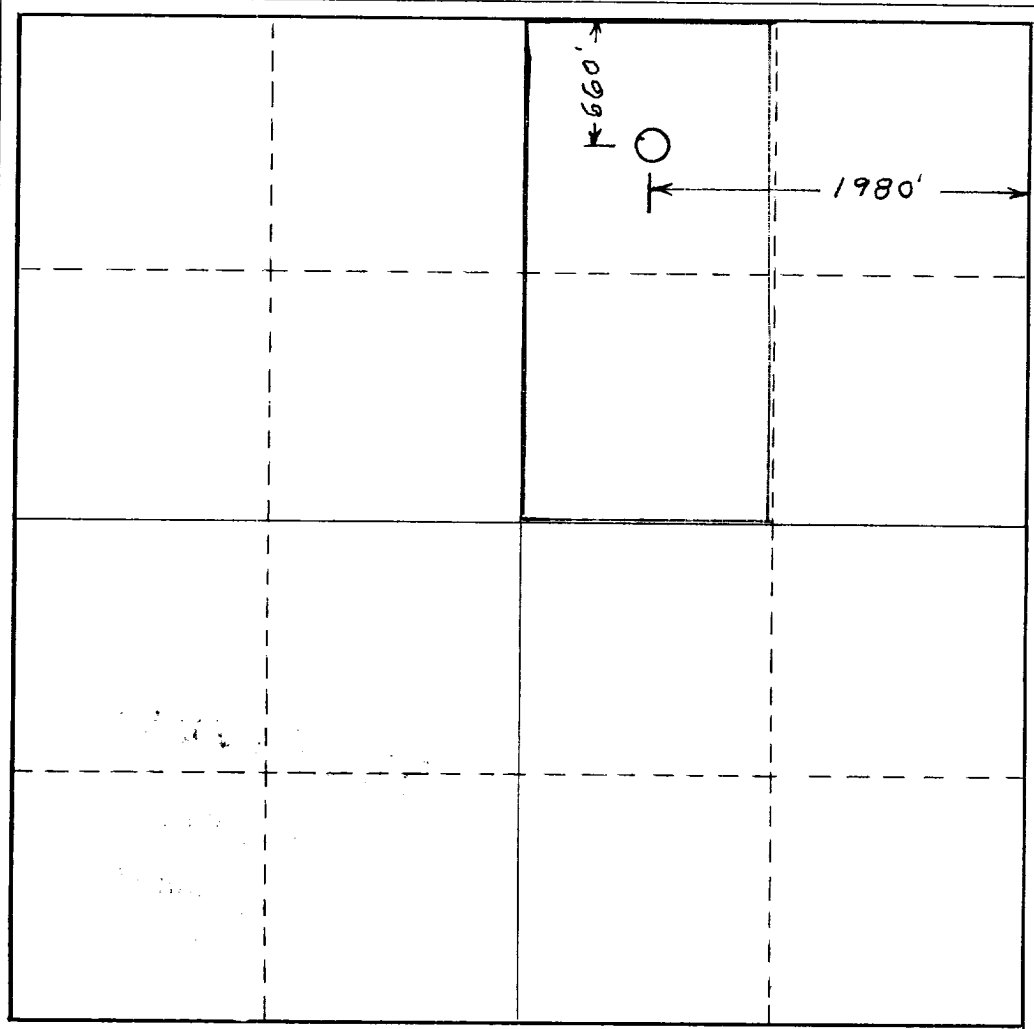
Operator <b>Baumgartner Oil Company</b>			Lease <b>USA - NM 0358539</b>		Well No. <b>1</b>
Unit Letter	Section <b>19</b>	Township <b>8 South</b>	Range <b>38 East</b>	County <b>Roosevelt</b>	
Actual Footage Location of Well: <b>660</b> feet from the <b>North</b> line and <b>1980</b> feet from the <b>East</b> line					
Ground Level Elev. <b>4005</b>	Producing Formation <b>San Andres</b>		Pool <b>Bluitt</b>		Dedicated Acreage: <b>80.00</b> Acres

- Outline the acreage dedicated to the subject well by colored pencil or hachure marks on the plat below.
- If more than one lease is dedicated to the well, outline each and identify the ownership thereof (both as to working interest and royalty).
- If more than one lease of different ownership is dedicated to the well, have the interests of all owners been consolidated by communitization, unitization, force-pooling, etc?

Yes  No If answer is "yes," type of consolidation \_\_\_\_\_

If answer is "no," list the owners and tract descriptions which have actually been consolidated. (Use reverse side of this form if necessary.) \_\_\_\_\_

No allowable will be assigned to the well until all interests have been consolidated (by communitization, unitization, forced-pooling, or otherwise) or until a non-standard unit, eliminating such interests, has been approved by the Commission.



CERTIFICATION

I hereby certify that the information contained herein is true and complete to best of my knowledge and belief.

*George B. Ja*  
Name

**Manager of Operat**  
Position

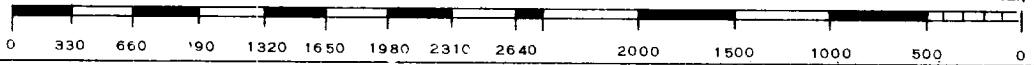
**Baumgartner Oil**  
Company

**October 2, 19**  
Date

I hereby cr  
shown on  
notes of  
under  
is tru  
know

Date

Rv  
a



**RECEIVED**

OCT - 6 1970

OIL CONSERVATION COMM.  
HOBBS, N. M.