

NEW MEXICO OIL CONSERVATION COMMISSION  
SOUTHEAST NEW MEXICO PACKER LEAKAGE TEST

Operator <b>Phillips Petroleum Company</b>			Lease <b>Marley "A"</b>			Well No. <b>1</b>	
Location of Well	Unit <b>P</b>	Sec <b>3</b>	Twp <b>11</b>	Rge <b>31</b>	County <b>Chaves</b>		
	Name of Reservoir or Pool		Type of Prod (Oil or Gas)	Method of Prod Flow, Art Lift	Prod. Medium (Tbg or Csg)	Choke Size	
Upper Compl	<b>Tower San Andres</b>		<b>Oil</b>	<b>Artif. Lift</b>	<b>Tbg</b>		
Lower Compl	<b>Undesignated- San Andres-Lower (Non Productive)</b>		<b>SWD</b>	<b>Vac.</b>	<b>Tbg</b>		

FLOW TEST NO. 1

Both zones shut-in at (hour, date): 10-5-70, 10:00 A.M.

Well opened at (hour, date): 10-6-70, 10:00 A.M. Upper Completion Lower Completion

Indicate by ( X ) the zone producing..... X

Pressure at beginning of test..... 60 0

Stabilized? (Yes or No)..... yes yes

Maximum pressure during test..... 60 5

Minimum pressure during test..... 40 0

Pressure at conclusion of test..... 40 5

Pressure change during test (Maximum minus Minimum)..... 20 5

Was pressure change an increase or a decrease?..... Dec. Inc.

Well closed at (hour, date): 10-7-70 Total Time On Production 24 hrs.

Oil Production 7 bbls; Grav. 21 ; Gas Production 5 MCF; GOR 714

Remarks Well made 29 bbls/wtr.

FLOW TEST NO. 2

Well opened at (hour, date): 10-8-70, 10: A.M. Upper Completion Lower Completion

Indicate by ( X ) the zone producing..... X

Pressure at beginning of test..... 55 5

Stabilized? (Yes or No)..... yes yes

Maximum pressure during test..... 60 5

Minimum pressure during test..... 55 vac.

Pressure at conclusion of test..... 60 vac.

Pressure change during test (Maximum minus Minimum)..... 5 5

Was pressure change an increase or a decrease?..... Inc. Dec.

Well closed at (hour, date) 10-9-70, 10:00 A.M. Total time on Production 24 hrs.

Oil Production 38 bbls; Grav. 48 ; Gas Production 5 MCF; GOR 714

Remarks Disposed of 38 bbls/wtr during test.

I hereby certify that the information herein contained is true and complete to the best of my knowledge.

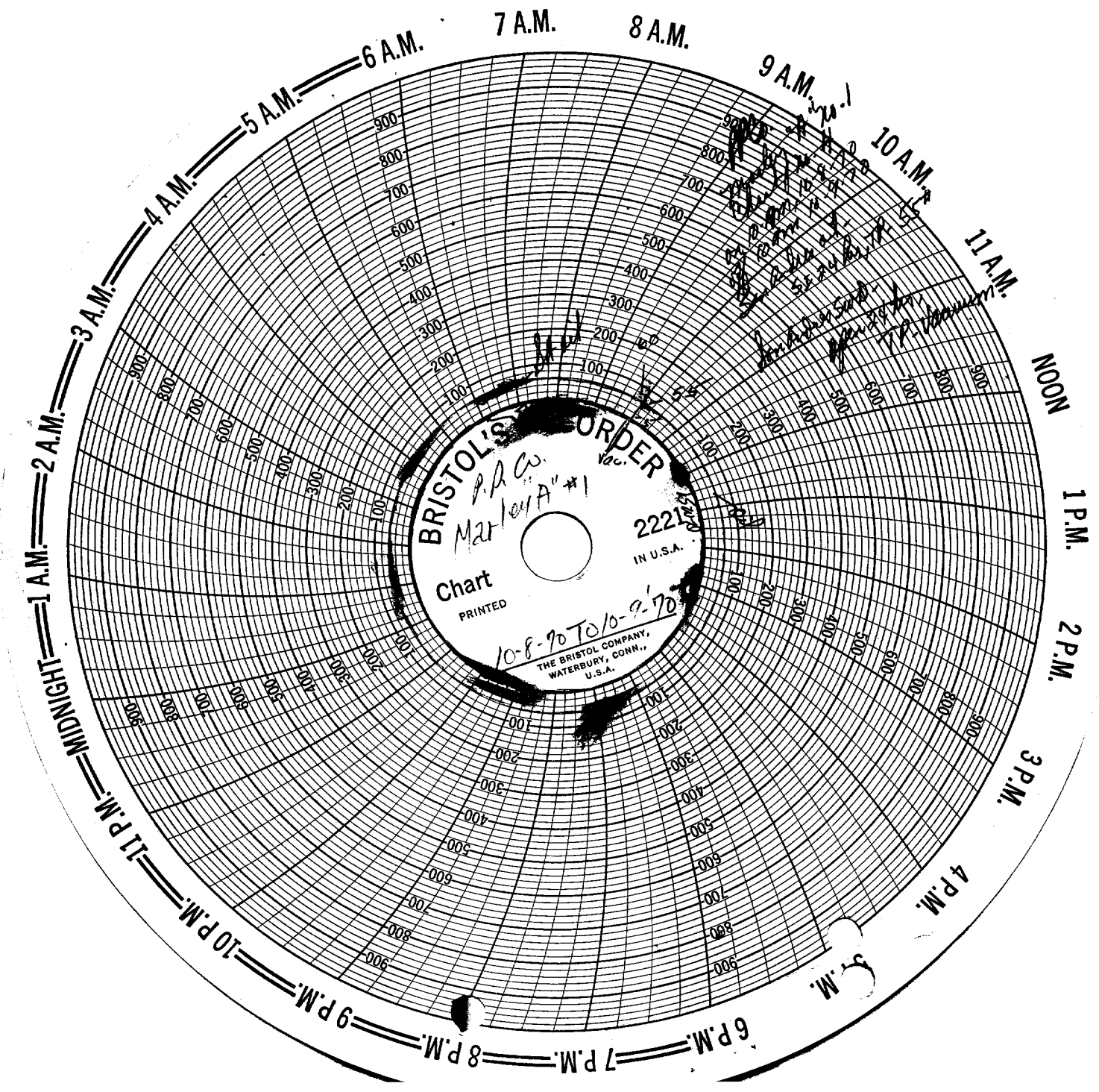
Approved \_\_\_\_\_ 19 70  
New Mexico Oil Conservation Commission

Operator Phillips Petroleum Company  
By W. J. Mueller

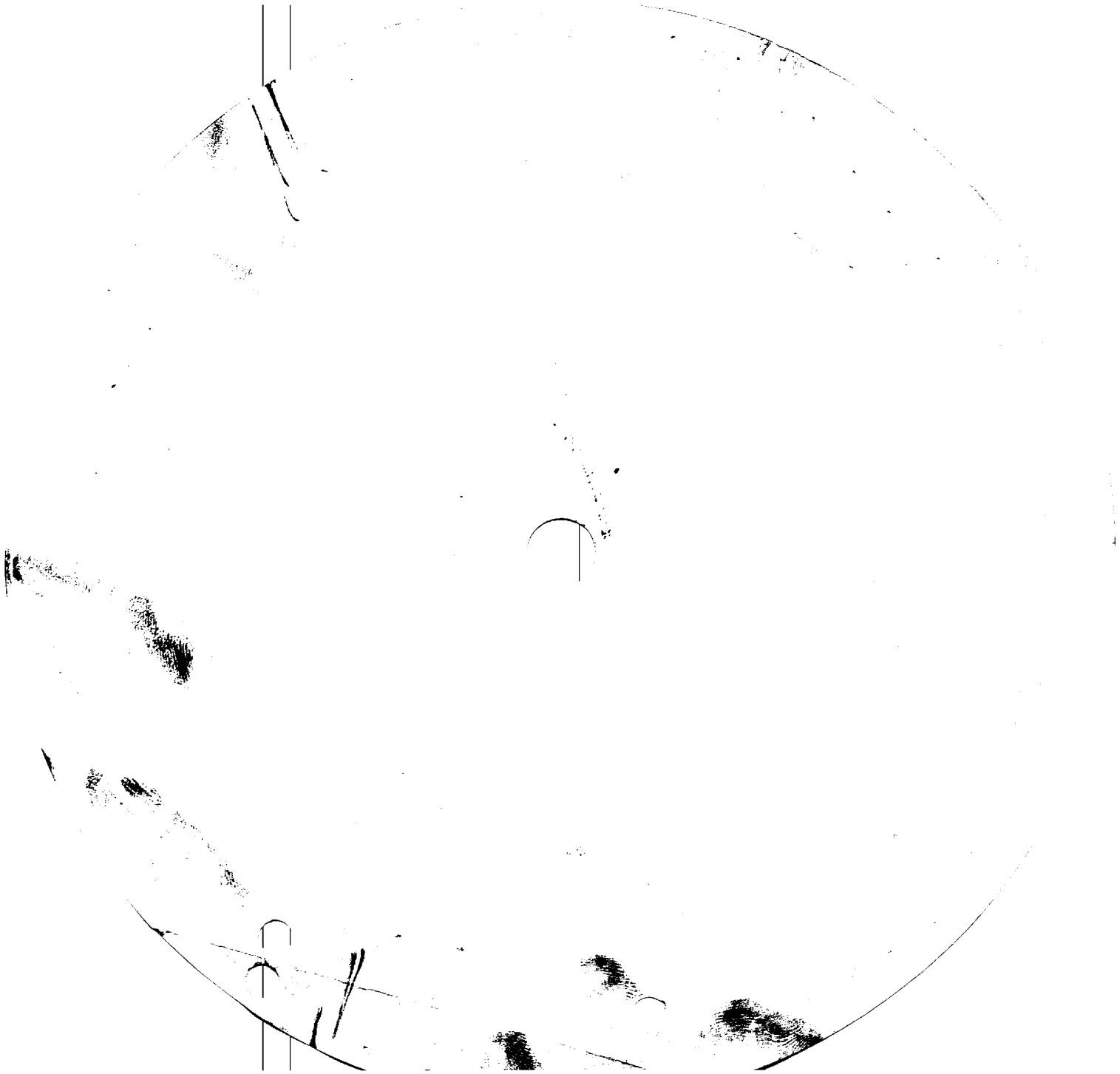
By \_\_\_\_\_  
Title \_\_\_\_\_

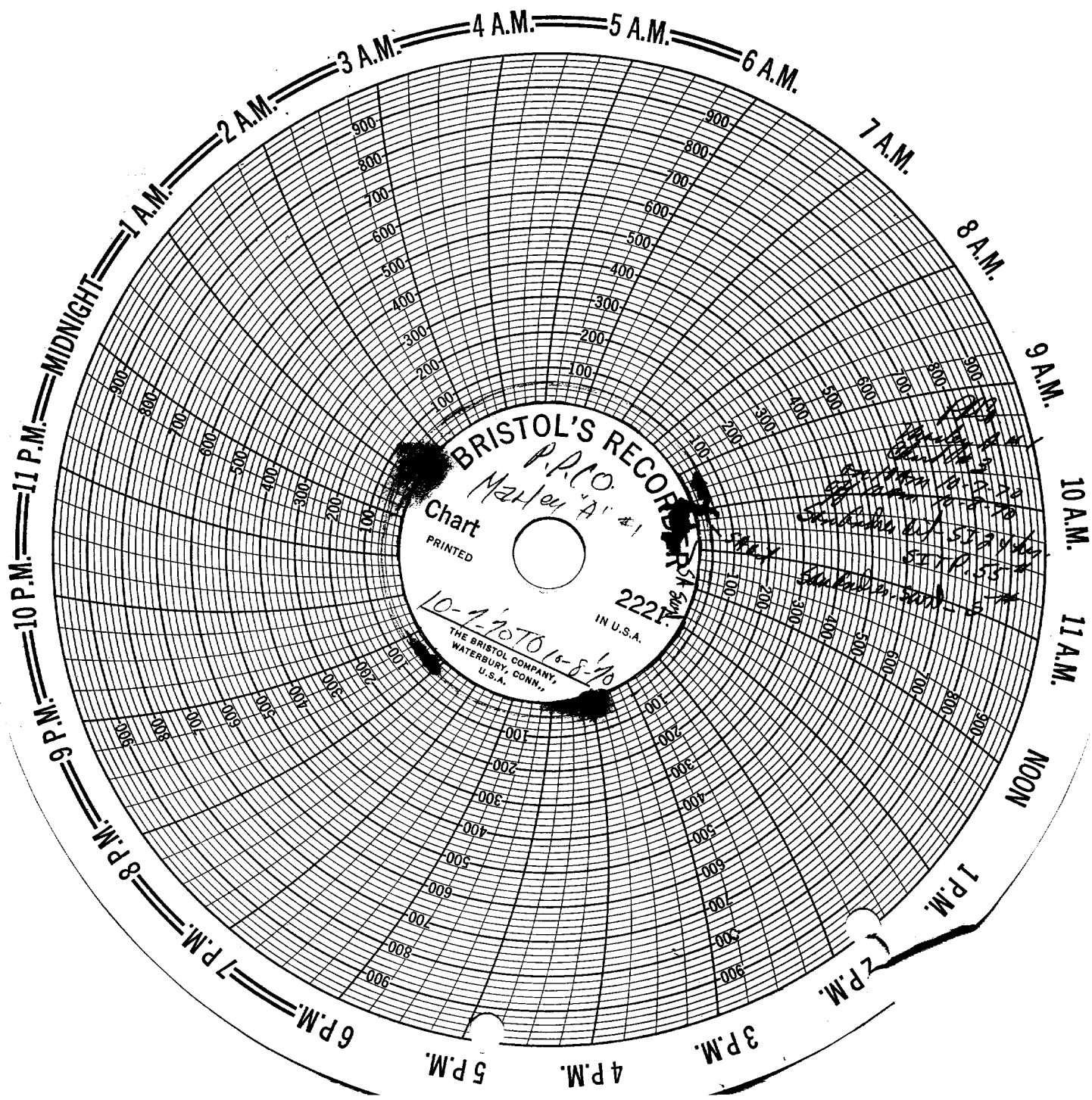
Title Associate Reservoir Engineer  
Date 10-9-70





**BRISTOL'S ORDER**  
P.A. Co.  
Marta "A" #1  
2221  
IN U.S.A.  
Chart  
PRINTED  
10-8-70 To 10-9-70  
THE BRISTOL COMPANY,  
WATERBURY, CONN.,  
U.S.A.



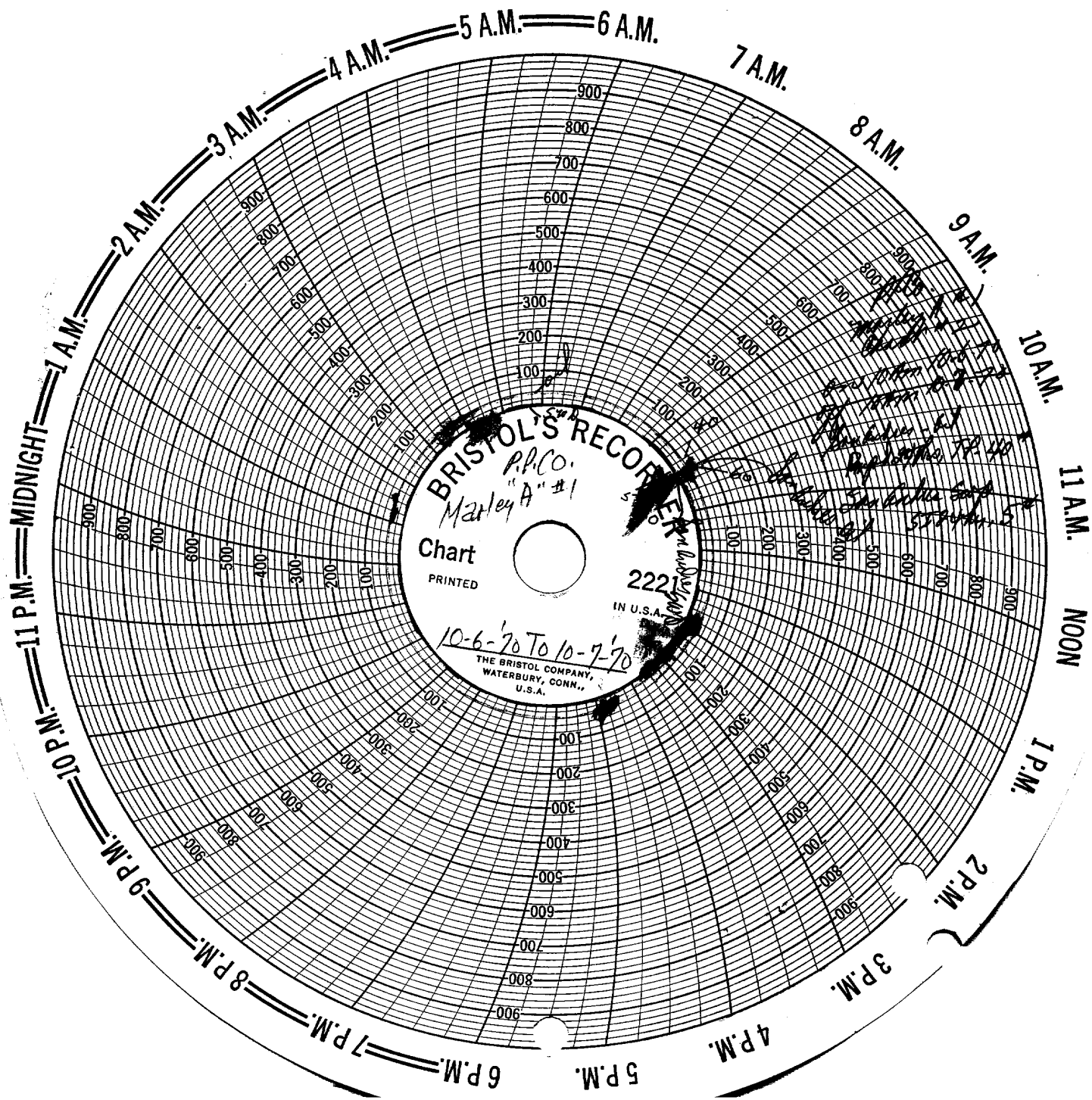


BRISTOL'S RECORDS  
P.P.O.  
Mather "A" #1  
Chart  
PRINTED  
10-1-1970 10-8-70  
2221  
IN U.S.A.  
THE BRISTOL COMPANY,  
WATERBURY, CONN.,  
U.S.A.

*Handwritten notes:*  
10-1-1970  
10-8-70  
2221  
Mather "A" #1  
10-1-1970  
10-8-70  
2221  
Mather "A" #1

11 P.M. 10 P.M. 9 P.M. 8 P.M. 7 P.M. 6 P.M. 5 P.M. 4 P.M. 3 P.M. 2 P.M. 1 P.M. NOON 11 A.M. 10 A.M. 9 A.M. 8 A.M. 7 A.M. 6 A.M. 5 A.M. 4 A.M. 3 A.M. 2 A.M. 1 A.M. MIDNIGHT





7 A.M.

8 A.M.

9 A.M.

10 A.M.

11 A.M.

NOON

1 P.M.

2 P.M.

3 P.M.

4 P.M.

5 P.M.

6 P.M.

7 P.M.

8 P.M.

9 P.M.

10 P.M.

11 P.M.

MIDNIGHT

1 A.M.

2 A.M.

3 A.M.

4 A.M.

5 A.M.

6 A.M.

||

||

||

||

||

||

||

||

||

||

||

||

||

||

||

||

||

||

||

||

||

||

||

||

||



||

||

||

||

||

||

||

||

||

||

||

||

||

||

||

||

||

||

||

||

||

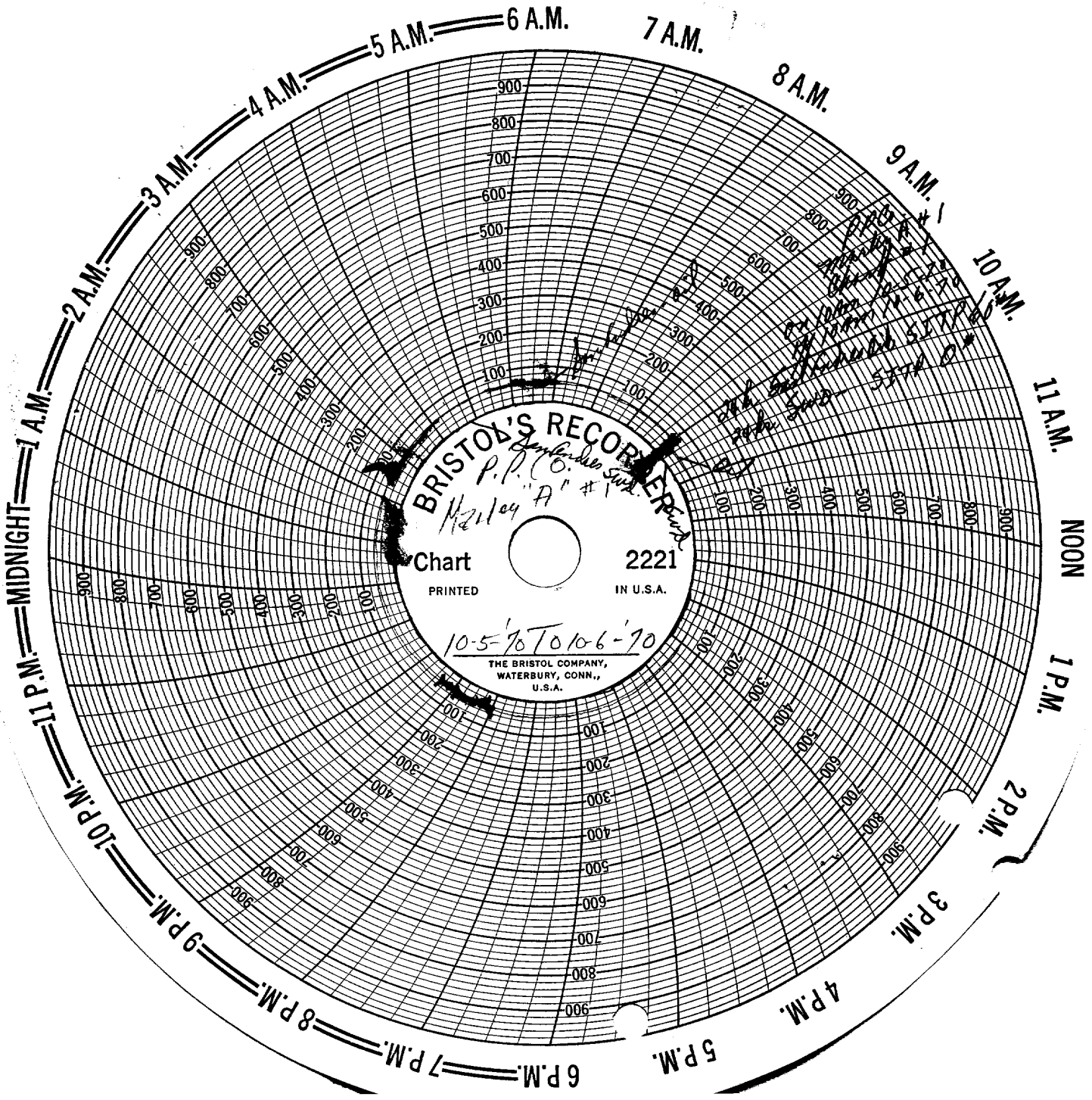
||

||

||

||





**BRISTOL'S RECORDERS**  
*Wilmington, Del.*  
*Hayley "A" #1*

Chart 2221  
PRINTED IN U.S.A.

10-5-76 TO 10-6-76

THE BRISTOL COMPANY,  
WATERBURY, CONN.,  
U.S.A.

