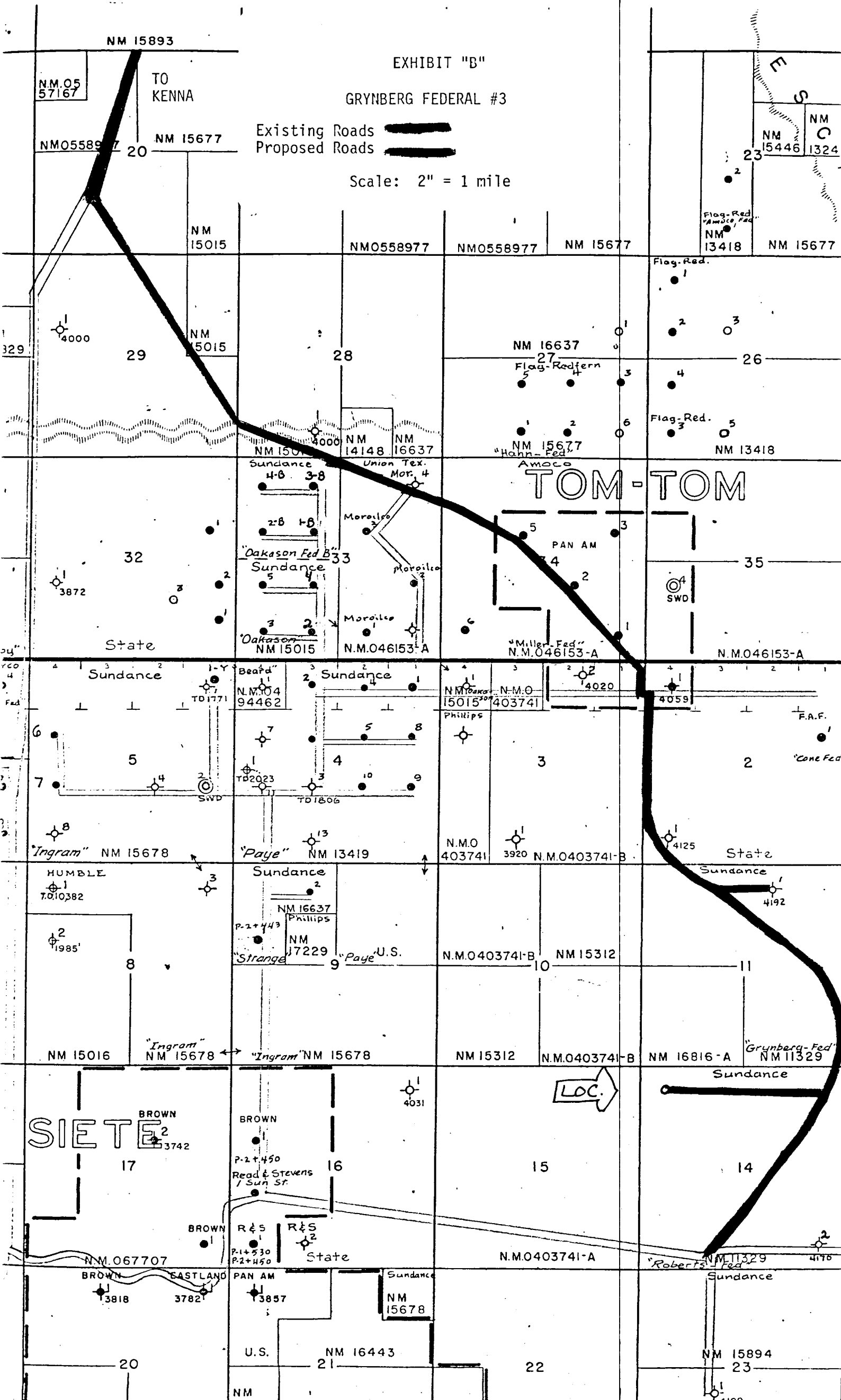


EXHIBIT "B"

GRYNBERG FEDERAL #3

Existing Roads Proposed Roads

Scale: 2" = 1 mile



NM 15893

N.M.05
57167

TO
KENNA

NM0558977 20

NM 15677

NM
15446 1324

NM
15015

NM0558977

NM0558977

NM 15677

Flag-Red
"Amoco Fed"
NM
13418

NM 15677

329

4000

29

NM
15015

28

NM 16637

Flag-Redfern
5

26

Flag-Red.
3

NM 15015 4000
Sundance
4-B 3-B

NM 14148

NM 16637

"Hahn Fed"
NM 15677

NM 13418

TOM-TOM

32

3872

State

"Dakason Fed B"
Sundance
5

Morales
Morales

PAN AM

35

SWD

"Miller Fed"
N.M.046153-A

N.M.046153-A

Sundance

"Beard"
Sundance
1

N.M.0403741
Phillips

N.M.0403741

F.A.F.

"Cone Fed"

"Ingram" NM 15678

"Paye" NM 13419

N.M.O
403741

3920

N.M.0403741-B

State

HUMBLE
7010382

Sundance

Sundance

NM 16637
Phillips

"Strange"
NM 17229

N.M.0403741-B

NM 15312

4192

NM 15016

"Ingram" NM 15678

NM 15312

N.M.0403741-B

NM 16816-A

"Grynberg Fed"
NM 11329

SIETE
3742

17

BROWN

P-2+450
Read & Stevens
Sun St.

16

4031

15

14

BROWN

R & S
P-1+530
P-2+450

State

N.M.0403741-A

"Roberts Fed"
NM 11329

N.M.067707

BROWN

EASTLAND

PAN AM

Sundance

NM
15678

3818

3782

3857

20

U.S. NM 16443

21

22

NM 15894

23

4100

RECEIVED

SEP 24 1971

O.C.D. HOBBS, OFFICE